



296  
Phone: 827-2428

STATE OF MINNESOTA  
MUNICIPAL COMMISSION

304 Capitol Square Building  
10th & Cedar Streets  
St. Paul, Minnesota 55101

Dec. 19, 1973

Ms. Carole A. Grimm, Clerk  
City Hall  
Rochester, Minnesota 55901

Re: Docket Number A-2471 Ordinance Number 1701

Dear Sir:

The Minnesota Municipal Commission acknowledges receipt and filing of the above Ordinance and filing fee in accordance with Minn. Statutes, Chapter 414 and the Rules of Procedure.

According to law, this annexation is final upon filing a copy of the ordinance with the Town Clerk, County Auditor and Secretary of State in addition to the Municipal Commission.

Please refer to the above docket and ordinance numbers in any future reference to this annexation.

Sincerely yours,

MUNICIPAL COMMISSION

Patricia D. Lundy  
Asst. Executive Secretary

PDL/mg

c.c. Secretary of State —  
County Auditor  
Township  
Attorney  
Municipality

26126  
RECEIVED  
DEC 27 1973  
SECRETARY OF STATE  
CORPORATION DIVISION

**ORDINANCE NO. 1701**

**AN ORDINANCE ANNEXING to the City of Rochester, Minnesota, Certain Unplatted Land in Cascade Township, Section 34, Township 107 North, Range 14 West, Olmsted County, Minnesota, and Establishing the Zoning Therefor.**

**THE COMMON COUNCIL OF THE CITY OF ROCHESTER DO ORDAIN:**

Section 1. The following described unplatted land in Cascade Township, Section 34, Township 107 North, Range 14 West, Olmsted County, Minnesota, is owned by and abuts the municipal limits of the City of Rochester:

That part of the East Half of the Northwest Quarter of Section Thirty-four (34), Township One Hundred Seven (107) North, Range Fourteen (14) West, which lies North of the centerline of Trunk Highway 14, and South of the North right-of-way line of the Chicago Northwestern Railway.

Section 2. The land described in section 1 above comprising approximately 23.54 acres is hereby annexed, added to and made a part of the City of Rochester, Minnesota, as effectively as if it had originally been a part thereof.

Section 3. Pursuant to Rochester Code of Ordinances, Section 60.504, as enacted by Ordinance No. 1659, known as the Zoning Ordinance of the City of Rochester, Minnesota, the land described in Section 1 above is designated as M-2 FF General Industrial District (Flood Fringe Overlay District).

Section 4. This ordinance shall take effect and be in force from and after its official publication and from and after the filing of a certified copy hereof with the Minnesota Municipal Commission, the Cascade Town Clerk, the County Auditor, and the Secretary of State.

Passed and adopted by the Common Council of the City of Rochester, Minnesota, this 21st day of May, 1973.

R. J. Foster  
President of said  
Common Council

ATTEST:  
Eilreda Reiler  
City Clerk

Approved this 22nd day of May, 1973.

(Seal of the City of  
Rochester, Minnesota)  
Alex P. Smelkia  
Mayor of said City

# 1701

State of Minnesota,


County of Olmsted,

City of Rochester, SS

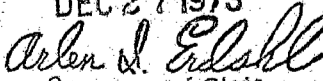
I, Elfreda Reiter, City Clerk of the City of Rochester,

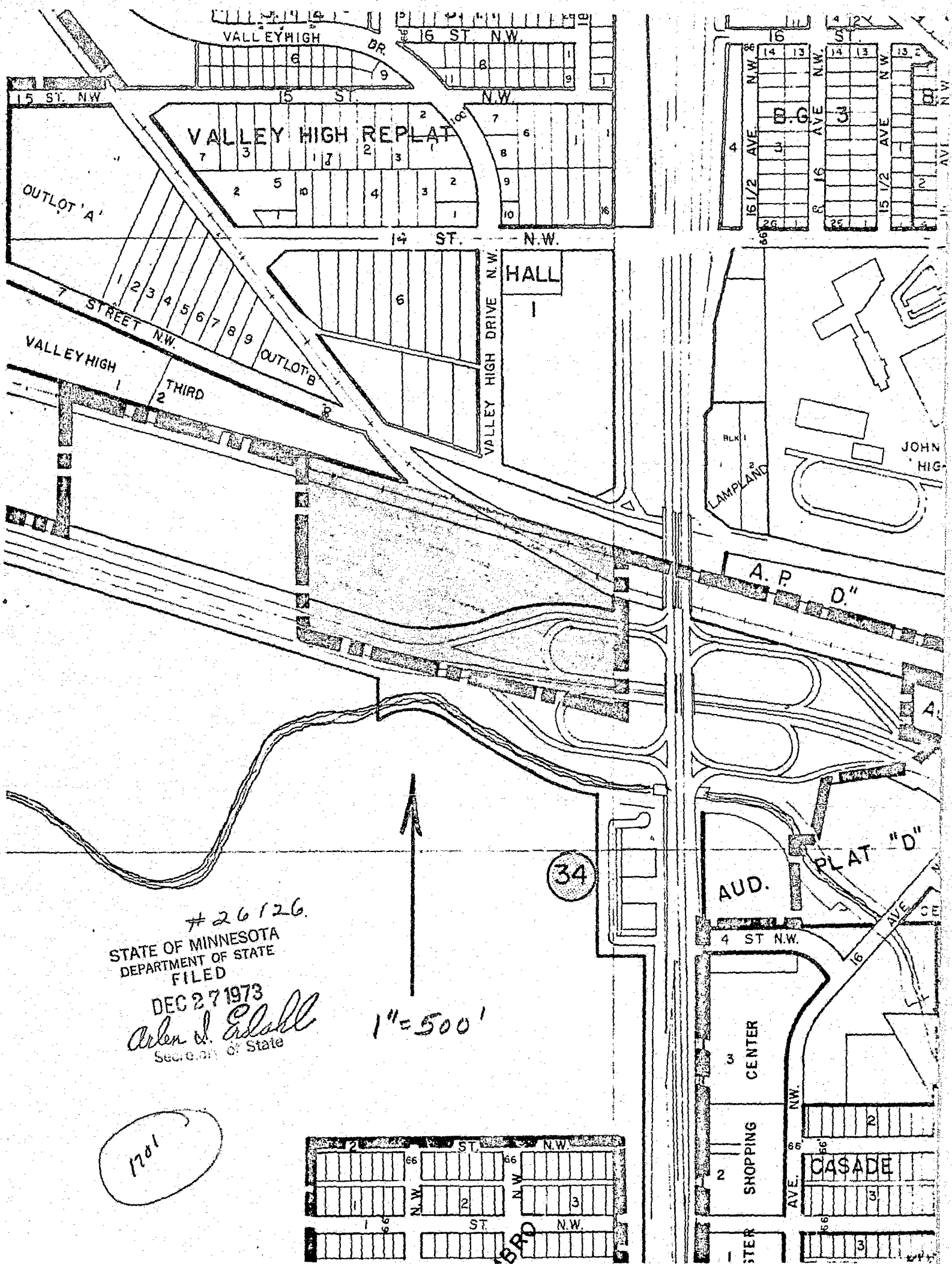
Minnesota do hereby certify that I have compared the attached copy of an ordinance with the original ordinance on file in my office and that the foregoing is a true and correct copy of the said ordinance and of the whole thereof.

Witness my hand this 23rd day of July, 1973.

  
\_\_\_\_\_  
City Clerk of Rochester, Minnesota

(Seal of the City of  
Rochester, Minnesota)

# 26126  
STATE OF MINNESOTA  
DEPARTMENT OF STATE  
FILED  
DEC 27 1973  
  
Secretary of State



#26126  
 STATE OF MINNESOTA  
 DEPARTMENT OF STATE  
 FILED

DEC 27 1973  
*Arlen J. Edvall*  
 Sec. of State

1" = 500'

1701

