



Phone: 221-2428

STATE OF MINNESOTA
MUNICIPAL COMMISSION

304 Capitol Square Building
10th & Cedar Streets
St. Paul, Minnesota 55101

Aug. 23, 1973

Mrs. Elfreda Reiter, Clerk
City Hall
Rochester, Minnesota

Re: Docket Number A-2379 Ordinance Number 1715

Dear Sir:

The Minnesota Municipal Commission acknowledges receipt and filing of the above Ordinance and filing fee in accordance with Minn. Statutes, Chapter 414 and the Rules of Procedure.

According to law, this annexation is final upon filing a copy of the ordinance with the Town Clerk, County Auditor and Secretary of State in addition to the Municipal Commission.

Please refer to the above docket and ordinance numbers in any future reference to this annexation.

Sincerely yours,

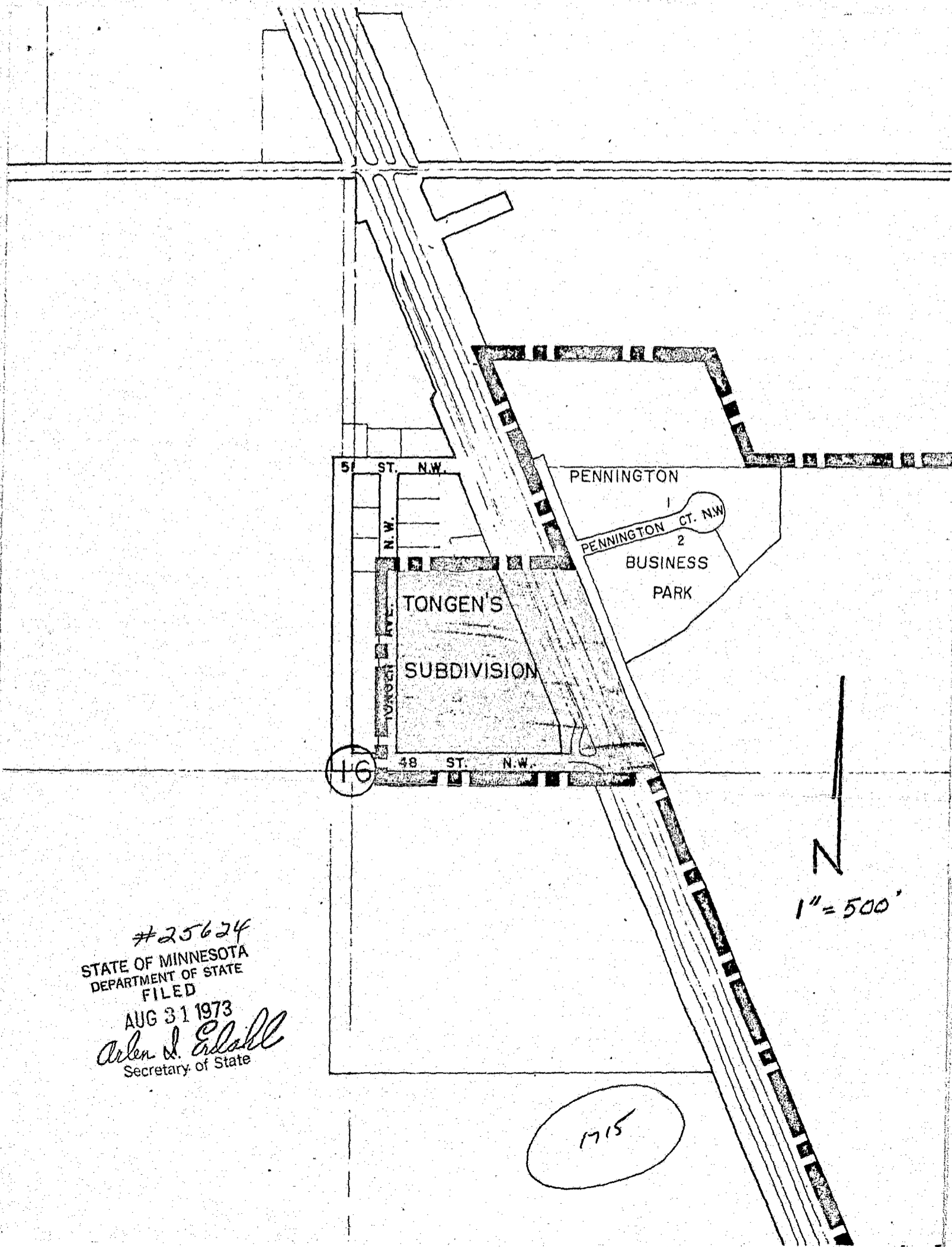
MUNICIPAL COMMISSION

Howard L. Kaibel, Jr.
Executive Secretary

HLK/mg

c.c. Secretary of State
County Auditor
Township
Attorney
Municipality

25624



#25624
STATE OF MINNESOTA
DEPARTMENT OF STATE
FILED
AUG 31 1973
Arlen J. Erdahl
Secretary of State

N
1" = 500'

1715

ORDINANCE NO. 1715

AN ORDINANCE Annexing to the City of Rochester, Minnesota, Certain Unplatted Land not Exceeding 200 Acres in Area, Situated in Section 16, Township 107 North, Range 14 West, Olmsted County, Minnesota, and Establishing the Zoning Therefor.

THE COMMON COUNCIL OF THE CITY OF ROCHESTER DO ORDAIN:

Section 1. A petition has been filed with the Common Council of the City of Rochester, signed by majority of the owners of the land described herein, requesting the Common Council to annex said land to the City of Rochester. The land described in said petition for annexation is located in Cascade Township, Olmsted County, Minnesota, and is described as follows:

All of the following described land situated in Township 107 North, Range 14 West, Olmsted County, Minnesota:

Commencing at the center of Section 16, Township 107 North, Range 14 West, in Olmsted County, Minnesota; thence east along the south line of the northeast quarter of said section to its intersection with the centerline of Tongen's Avenue N.W. for a place of beginning; thence north along the centerline of Tongen's Avenue N.W. to its intersection with the south line of Tongen's First Subdivision; thence east along the south line of Tongen's First Subdivision extended to its intersection with the east right-of-way line of U.S. 52 North; thence south-easterly along the east right-of-way line of U.S. 52 to its intersection with the south line of the northeast quarter of Section 16; thence west along the south line of the northeast quarter of Section 16 to the place of beginning.

Said petition has also been filed with the Town Board of Cascade Township, with the County Board of the County of Olmsted, and with the Minnesota Municipal Commission and more than 60 days have elapsed since said petition was filed with the Town Board and no objections to annexation of the above described land have been filed by said Town Board with the Minnesota Municipal Commission.

Section 2. The quantity of unplatted land included in said petition is approximately 19.63 acres.

Section 3. The Common Council of the City of Rochester does hereby determine that the land described in Section 1 abuts upon the present territorial limits of the City of Rochester, is so conditioned as to be properly subject to municipal government, and the annexation of said land will be in the best interest of the City of Rochester and the land affected.

Section 4. Therefore, the land described in Section 1 above is hereby annexed, added to and made a part of the City of Rochester, Minnesota, as effectually as if it had originally been a part thereof.

Section 5. Present and future owners of the area annexed by this ordinance are hereby notified that in addition to the usual assessments, it is the intention of the Common Council to assess against benefited property all or a portion of the cost of any storm sewer, water tower and trunk line sanitary sewer construction heretofore or hereafter undertaken to serve the area annexed.

Section 6. Pursuant to Rochester Code of Ordinances, No. 69.506 as enacted by Ordinance No. 1659, known as the Zoning Ordinance of the City of Rochester, the land herein annexed to the City of Rochester is zoned as B-3 General Business District.

Section 7. This ordinance shall take effect and be in force from and after its official publication and from and after the filing of a certified copy hereof with the Minnesota Municipal Commission, the Cascade Township Clerk, the County Auditor and the Secretary of State.

Passed and adopted by the Common Council of the City of Rochester, Minnesota, this 14th day of July, 1973.

R. J. POSTIER
President of said
Common Council

Attest: ELFREDA REITER
City Clerk
Approved this 17th day of July, 1973.
ALEX P. SMEKTA
Mayor of said City

(Seal of the City of
Rochester, Minnesota)
(7/21 7/28)

25624

STATE OF MINNESOTA
DEPARTMENT OF STATE
FILED

AUG 31 1973

Arden J. Edsall
Secretary of State

#1715

State of Minnesota,

County of Olmsted,

City of Rochester, SS

I, Elfreda Reiter, City Clerk of the City of Rochester,
Minnesota do hereby certify that I have compared the attached
copy of an ordinance with the original ordinance on file in
my office and that the foregoing is a true and correct copy
of the said ordinance and of the whole thereof.

Witness my hand this 23rd day of July, 1973.

Elfreda Reiter
City Clerk of Rochester, Minnesota

(Seal of the City of
Rochester, Minnesota)

25624
STATE OF MINNESOTA
DEPARTMENT OF STATE
FILED
AUG 31 1973
Allen J. Edsall
Secretary of State