



Phone: 221-2428

STATE OF MINNESOTA
MUNICIPAL COMMISSION

304 Capitol Square Building
10th & Cedar Streets
St. Paul, Minnesota 55101
June 8, 1973

Mrs. Elfreda Reiter, Clerk
City Hall
Rochester, Minnesota 55901

Re: Docket Number A-2308 Ordinance Number 1696

Dear Sir:


The Minnesota Municipal Commission acknowledges receipt and filing of the above Ordinance and filing fee in accordance with Minn. Statutes, Chapter 414 and the Rules of Procedure.

According to law, this annexation is final upon filing a copy of the ordinance with the Town Clerk, County Auditor and Secretary of State in addition to the Municipal Commission.

Please refer to the above docket and ordinance numbers in any future reference to this annexation.

Sincerely yours,

MUNICIPAL COMMISSION


Howard L. Kaibel, Jr.
Executive Secretary

HLK/mg

c.c. Secretary of State
County Auditor
Township
Attorney
Municipality

RECEIVED
JUN 21 1973
SECRETARY OF STATE
CORPORATION DIVISION

25342

ORDINANCE NO. 1696

AN ORDINANCE ANNEXING to the City of Rochester, Minnesota, Certain Unplatted Land Not Exceeding 100 Acres in Area, All Being in Section 5, Township 106 North, Range 13 West, Olmsted County, Minnesota.

THE COMMON COUNCIL OF THE CITY OF ROCHESTER DO ORDAIN:

Section 1. A petition has been filed with the Common Council of the City of Rochester, signed by a majority of the owners of the land described herein, requesting the Common Council to annex said land to the City of Rochester. The land described in said petition for annexation is located in Marion Township, Olmsted County, Minnesota, and is described as follows:

The North Quarter of the Northwest Quarter of the Southeast Quarter of Section 5, Township 106 North, Range 13 West. The west 33.0 feet thereof being subject to an easement for roadway right-of-way.

Said petition has also been filed with the Town Board of Marion Township, with the County Board of the County of Olmsted, and with the Minnesota Municipal Commission and more than 60 days have elapsed since said petition was filed with the Town Board and no objections to annexation of the above described land have been filed by said Town Board with the Minnesota Municipal Commission.

Section 2. The quantity of unplatted land included in said petition is approximately 10.00 acres.

Section 3. The Common Council of the City of Rochester does hereby determine that the land described in Section 1 abuts upon the present territorial limits of the City of Rochester, is so conditioned as to be properly subjected to municipal government, and the annexation of said land will be in the best interest of the City of Rochester and the land affected.

Section 4. Therefore, the land described in Section 1 above is hereby annexed, added to and made a part of the City of Rochester, Minnesota, as effectually as if it had originally been a part thereof.

Section 5. Present and future owners of the area annexed by this ordinance are hereby notified that in addition to the usual assessments, it is the intention of the Common Council to assess against benefited property all or a portion of the cost of any storm sewer, water tower and trunk line sanitary sewer construction, heretofore or hereafter, undertaken to serve the area annexed.

Section 6. This ordinance shall take effect and be in force from and after its official publication and from and after the filing of a certified copy herof with the Minnesota Municipal Commission, the Marion Town Clerk, the County Auditor and the Secretary of State.

Passed and adopted by the Common Council of the City of Rochester, Minnesota, this 2nd day of April, 1973.

R. J. POSTIER
President of said
Common Council

Attest:
ELFREDA REITER
City Clerk

Approved this 3rd day of April, 1973.
ALEX P. SMEKTA
Mayor of said City

Seal of the City of Rochester, Minnesota

#25342

STATE OF MINNESOTA
DEPARTMENT OF STATE
FILED

JUN 21 1973

Allen J. Edsall
Secretary of State

#1696

State of Minnesota,

County of Olmsted,

City of Rochester, SS

I, Elfreda Reiter, City Clerk of the City of Rochester, Minnesota do hereby certify that I have compared the attached copy of an ordinance with the original ordinance on file in my office and that the foregoing is a true and correct copy of the said ordinance and of the whole thereof.

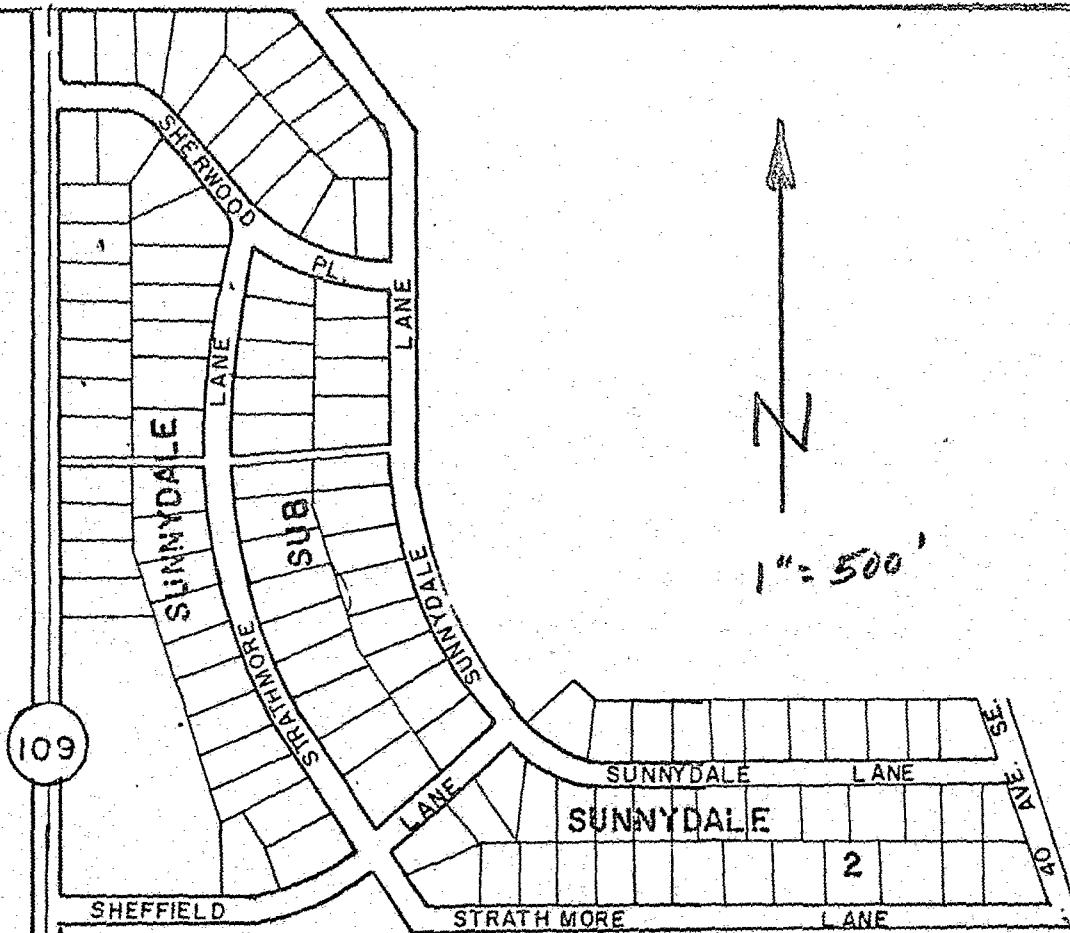
Witness my hand this 12th day of April, 1973.

Elfreda Reiter
City Clerk of Rochester, Minnesota

(Seal of the City of
Rochester, Minnesota)

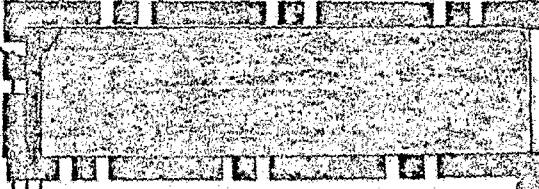
#25342
STATE OF MINNESOTA
DEPARTMENT OF STATE
FILED
JUN 21 1973
Arlen J. Edahl
Secretary of State

#1696



N
1" = 500'

109



ORD. 1574

#25342
STATE OF MINNESOTA
DEPARTMENT OF STATE
FILED
JUN 21 1973
Arden J. Erdahl
Secretary of State

ORD. 1391

144

1191