

Phone: 221-2428



STATE OF MINNESOTA
MUNICIPAL COMMISSION

304 Capitol Square Building
10th & Cedar Streets
St. Paul, Minnesota 55101

Oct. 1, 1971

Mr. John S. Gustaf, Clerk
City Hall 207 Lafayette St.
Winnona, Minnesota

Re: Docket Number A-2001 Ordinance Number 1892

Dear Sir:

The Minnesota Municipal Commission acknowledges receipt and filing of the above Ordinance and filing fee in accordance with Minn. Session Laws 1969, Chapter 1146, Section 12 and the Rules of Procedure.

According to law, this annexation is final upon filing a copy of the ordinance with the Town Clerk, County Auditor and Secretary of State in addition to the Municipal Commission.

Please refer to the above docket and ordinance numbers in any future reference to this annexation.

Very truly yours,

MUNICIPAL COMMISSION

A handwritten signature in cursive script, appearing to read "Bruce Rasmussen".

Bruce Rasmussen
Executive Secretary

BR/mg

c.c. Secretary of State
County Auditor
Township
Attorney
Municipality

23073

(Pub. Date Wednesday, June 23, 1971)

**Ordinance No. 2192
AN ORDINANCE EXTENDING
THE CORPORATE LIMITS OF THE
CITY OF WINONA TO INCLUDE
CERTAIN LAND**

WHEREAS, certain land described as follows is owned in fee by the City of Winona:

The East Half of the Southeast Quarter (E½ of SE¼) of Section Twenty-nine (29), Township One Hundred Seven (107) North, Range Seven (7) West, and

WHEREAS, said land abuts the municipality and is not included in any other municipality,

NOW, THEREFORE, the City of Winona does ordain:

Section 1. The corporate limits of the City of Winona, Minnesota, are hereby extended to include the land described as follows:

The East Half of the Southeast Quarter (E½ of SE¼) of Section Twenty-nine (29), Township One Hundred Seven (107) North, Range Seven (7) West.

Section 2. The City Clerk is hereby directed to file a copy of this order with the Minnesota Municipal Commission, the Town Clerk of Winona Township, the County Auditor, and the Secretary of State.

Section 3. This ordinance shall take effect and be deemed final upon filing of said copies.

Passed at Winona, Minnesota, this 21st day of June, 1971.

Norman E. Indall
Mayor

Attested by:
John S. Carter
City Clerk

* * * * *

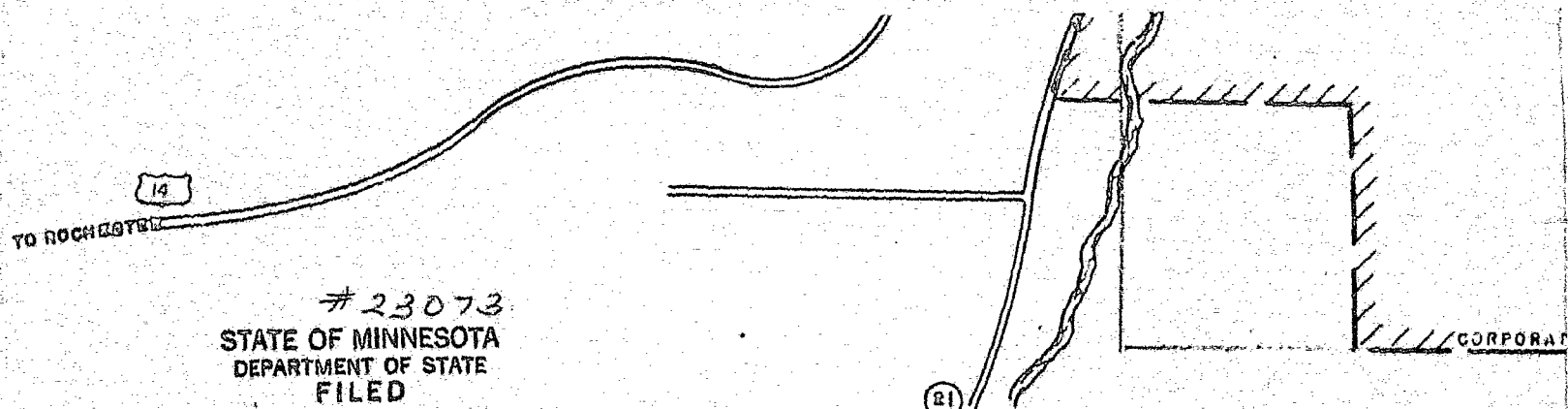
STATE OF MINNESOTA)
)ss
County of Winona)

I, John S. Carter, City Clerk in and for the City of Winona, county and state aforesaid, do hereby certify that I have the care and custody of the ordinances adopted by the City Council of said City; that the annexed and aforesaid ordinance is a true, correct and compared copy of the original thereof as adopted by said City Council on the 21st day of June, 1971, numbered 2192, and published in the official newspaper of the City on June 23, 1971, and now in full force and effect.

IN WITNESS WHEREOF, I have hereunto set my hand and the seal of said City of Winona, Minnesota, this 9th day of July, 1971.

John S. Carter
City Clerk

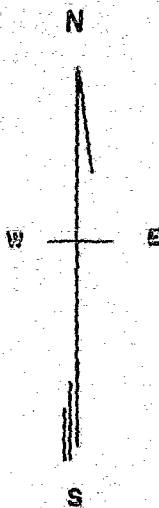
#23073
STATE OF MINNESOTA
DEPARTMENT OF STATE
FILED
OCT 13 1971
Arden J. Edsall
Secretary of State



23073
STATE OF MINNESOTA
DEPARTMENT OF STATE
FILED

OCT 19 1971

Arlen J. Erdahl
Secretary of State



CORPORATE LIMITS MAP
WINONA, MINNESOTA - JAN. 18, 1968.
SCALE - 1" = 1000'
R.D.L.

WINONA, MINN. 1968

100' 0"

DOLLER'S
LAKE

42ND AVE.
40TH AVE.
S 39TH AVE.
38TH AVE.
37TH AVE.

GILMORE VALLEY
WATERSHED

GOODVIEW
ROAD

KERRY

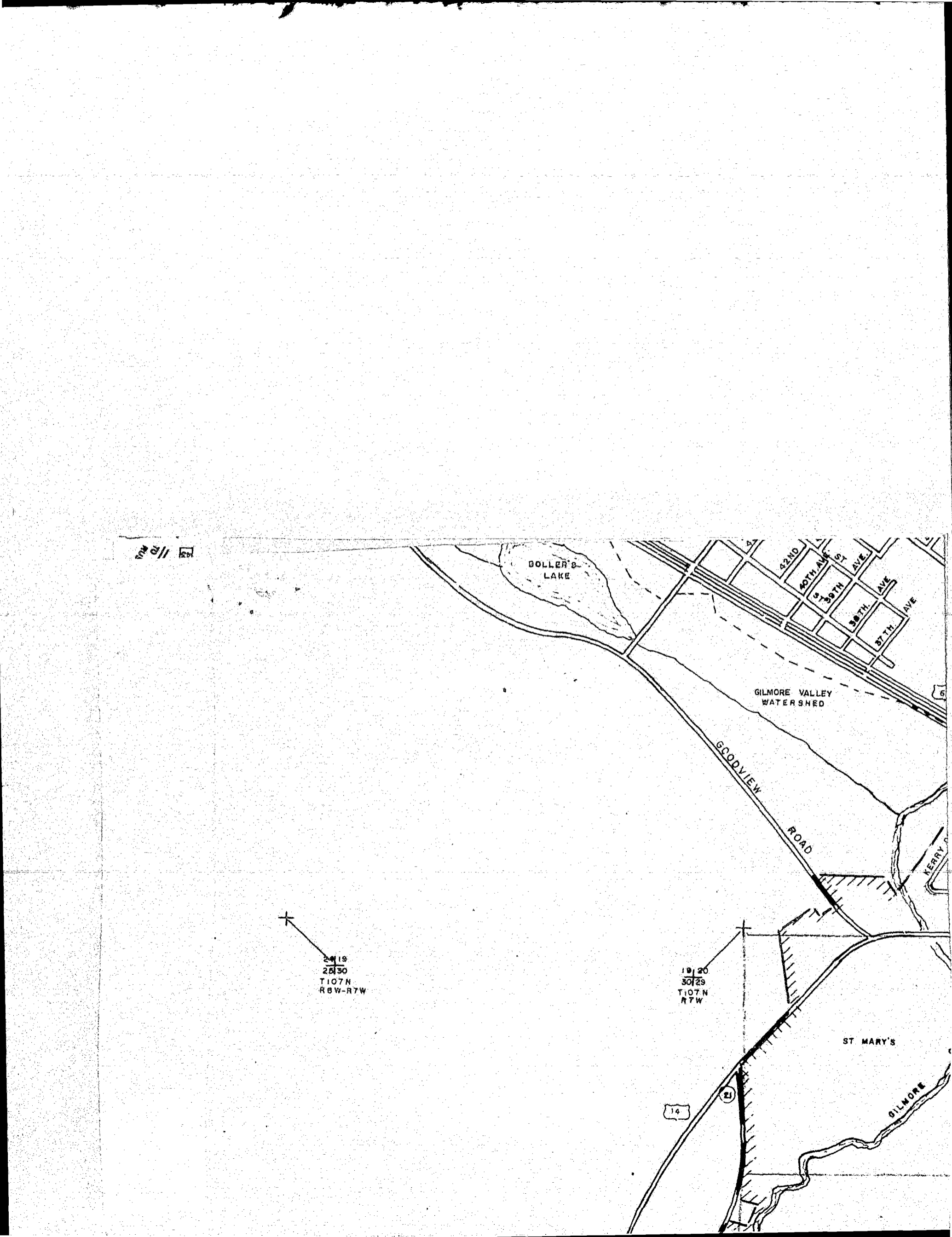
2419
2030
T107N
R6W-R7W

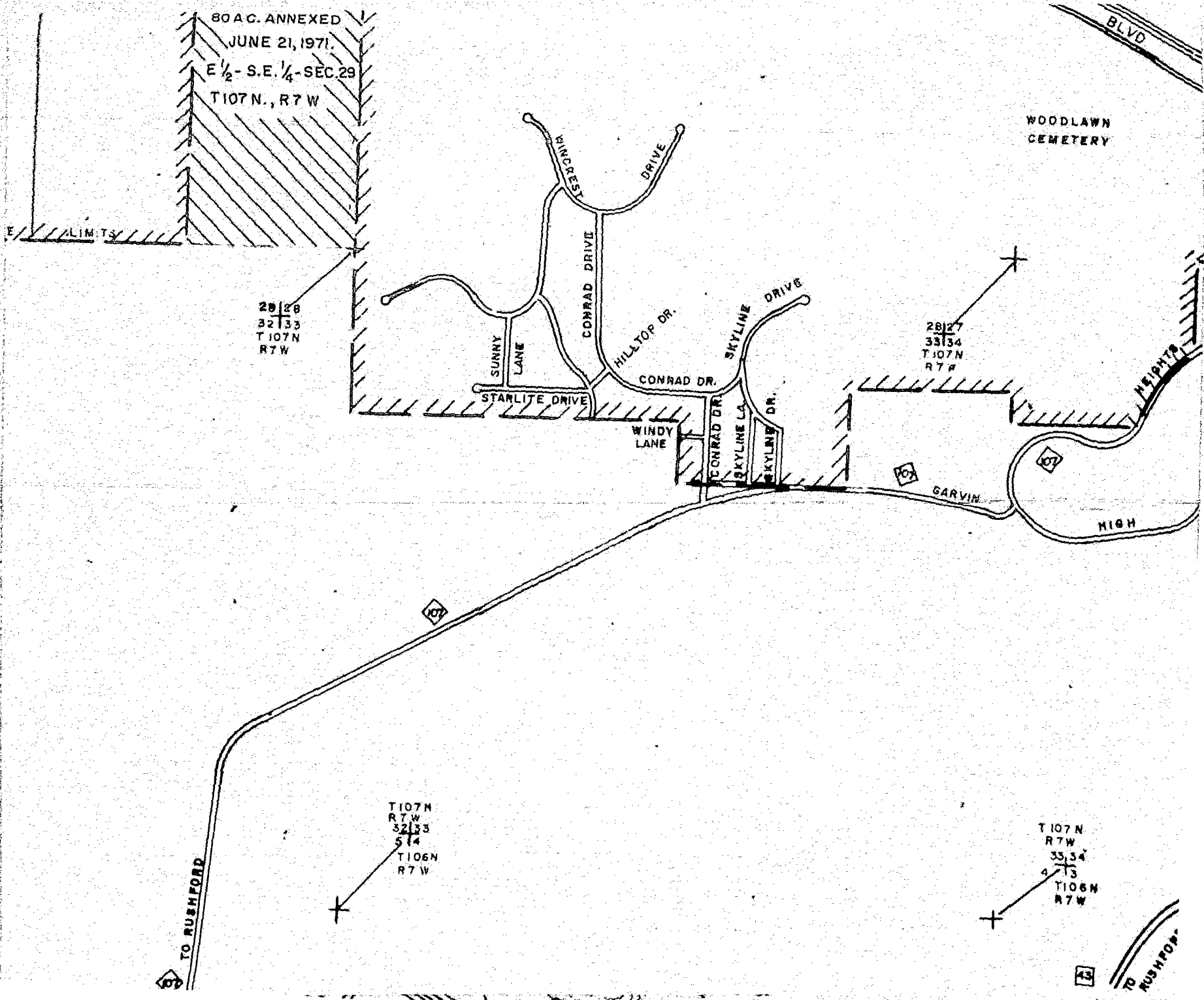
19, 20
30, 29
T107N
R7W

ST MARY'S

14

GILMORE





80 AC. ANNEXED
 JUNE 21, 1971.
 E 1/2 - S.E. 1/4 - SEC. 29
 T107N., R7W

28128
 32133
 T107N
 R7W

28127
 33134
 T107N
 R7W

T107M
 R7W
 32133
 S14
 T106N
 R7W

T107N
 RTW
 33,34
 4,13
 T106N
 R7W

TO RUSHFORD

TO RUSHFORD

WOODLAWN
 CEMETERY

BLVD

HEIGHTS

HIGH

GARVIN

WINDY LANE

STARLITE DRIVE

HILLTOP DR.

CONRAD DR.

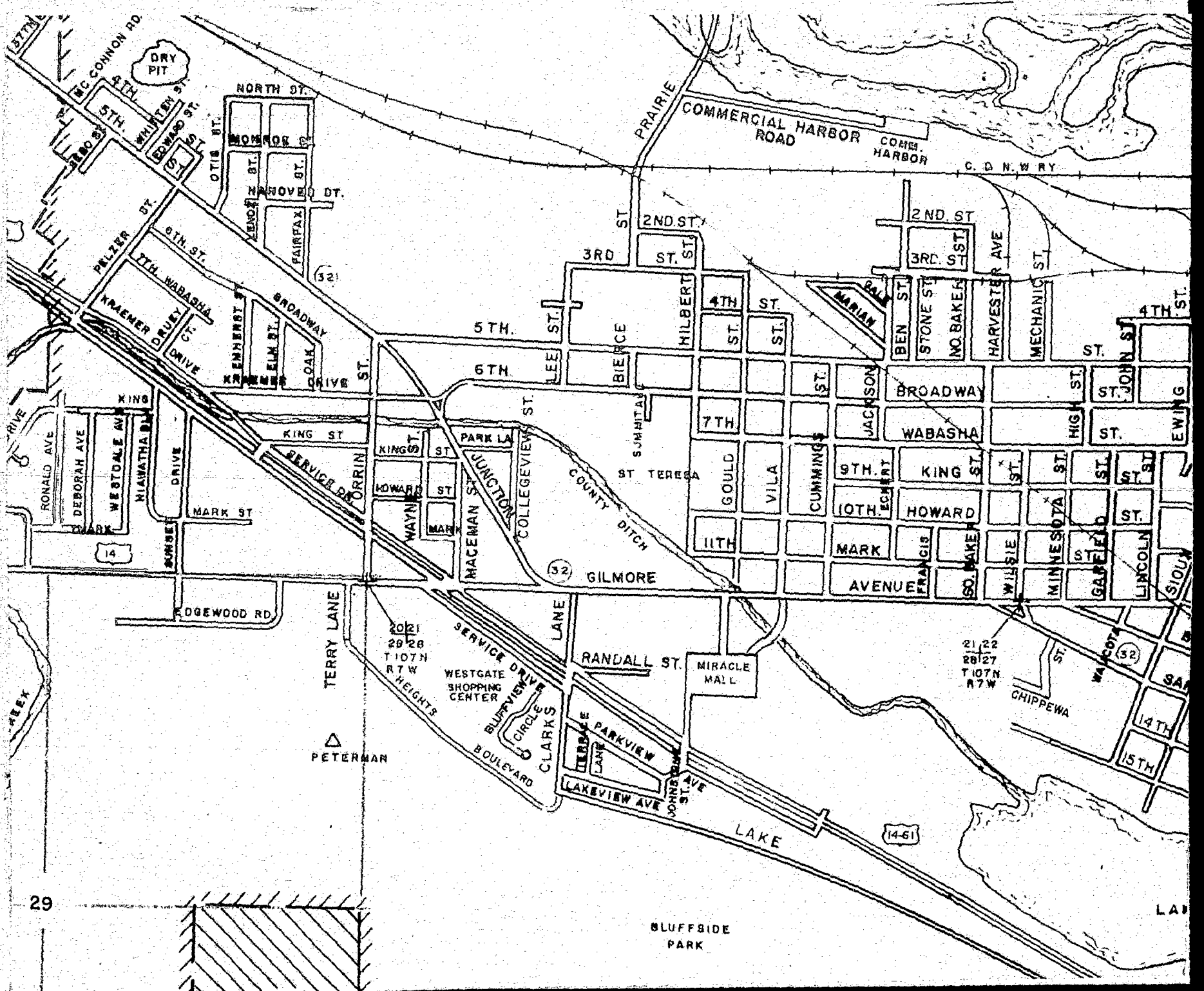
SKYLINE DRIVE

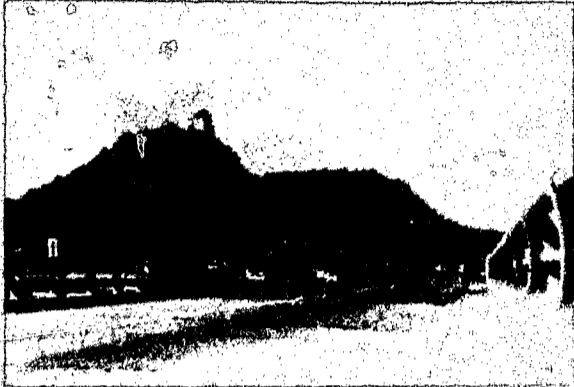
CONRAD DRIVE

WINCREST DRIVE

SUNNY LANE

E LIMITS





The
City of Winona MINNESOTA 55987

OFFICE OF: City Clerk

July 9, 1971

ADDRESS: City Hall

Hon. Arlen I. Erdahl
Secretary of State
St. Paul, Minnesota 55101

Dear Sir:

Enclosed find a certified copy of ordinance number 2192 adopted by the City Council of Winona, extending the corporate limits of the City of Winona to include certain unincorporated land, which land was owned by the City and 75% surrounded by the City. A map is also enclosed showing the parcel in relationship to the City.

A copy of each will also be filed with the Minnesota Municipal Commission, the County Auditor and the Township Clerk as required by law.

Sincerely yours,

John S. Carter
John S. Carter
City Clerk

JSC:me

GATEWAY TO THE TEN THOUSAND LAKES THROUGH THE BEAUTIFUL HIAWATHA VALLEY

UNLIMITED RECREATION AREA — THREE COLLEGES — LIGHT AND HEAVY INDUSTRY — AIR TRANSPORTATION — FIVE RAILROADS — SEVEN TRUCKING COMPANIES — INLAND WATERWAYS TRANSPORTATION ON THE MIGHTY MISSISSIPPI

73073