



STATE OF MINNESOTA
MUNICIPAL COMMISSION

304 Capitol Square Building
10th & Cedar Streets
St. Paul, Minnesota 55101

June 18, 1971

Mr. T. N. Weeks, Clk.-Treas.
City Hall
Windom, Minnesota

Re: Docket Number A-2005 Ordinance Number 246

Dear Sir:

The Minnesota Municipal Commission acknowledges receipt and filing of the above Ordinance and filing fee in accordance with Minn. Session Laws 1969, Chapter 1146, Section 12 and the Rules of Procedure.

According to law, this annexation is final upon filing a copy of the ordinance with the Town Clerk, County Auditor and Secretary of State in addition to the Municipal Commission.

Please refer to the above docket and ordinance numbers in any future reference to this annexation.

Very truly yours,

MUNICIPAL COMMISSION

Bruce Rasmussen

Bruce Rasmussen
Executive Secretary

BR/mg

c.c. Secretary of State
County Auditor
Township
Attorney
Municipality

22582

ORDINANCE NO. 246

AN ORDINANCE EXTENDING THE CORPORATE LIMITS OF THE CITY OF WINDOM TO INCLUDE CERTAIN UNINCORPORATED TERRITORY BORDERED BY LAND WITHIN THE CITY LIMITS AND ABUTTING THEREON.

WHEREAS, certain territory described below is not presently included within the corporate limits of any incorporated city, village or borough; and

WHEREAS, 60% or more of the perimeter of this territory is bordered by lands already included within the corporate limits of the City of Windom and is deemed to be urban in character; and

WHEREAS, said territory is approximately twenty acres in area; and

WHEREAS, on March 5, 1971, the City caused notice of intent to annex said territory to be duly served upon the Town Board of Great Bend Township; and

WHEREAS, no objections to said annexation have been filed with the Minnesota Municipal Commission.

BE IT ORDAINED BY THE CITY OF WINDOM, MINNESOTA AS FOLLOWS:

Section 1. The City Council hereby determines that the annexation will be to the best interest of the City, and to the territory affected, and that none of the territory is now included within the corporate limits of any other city, village or borough.

Section 2. The corporate limits of the City of Windom, Minnesota are hereby extended to include the platted and unplatted territory in Great Bend Township, Cottonwood County, Minnesota described as follows, 60% or more of the perimeter of which territory is bordered by territory already included within the City limits:

All that part of the South Half of the Northwest Quarter and of the North Half of the Southwest Quarter, all in Section 36, Township 105, Range 36 lying Westerly of Trunk Highway No. 60 and Trunk Highway No. 71, which is not presently within the City limits of the City of Windom.

Adopted by the City Council of Windom, Minnesota this 21st day of May, 1971.

C. O. Castledine
Mayor

Attest:
T. N. Weeks
Clerk

1st Reading: May 7, 1971
2nd Reading: May 21, 1971
Publication: May 25, 1971

STATE OF MINNESOTA)
) ss
COUNTY OF COTTONWOOD)

#22582
STATE OF MINNESOTA
DEPARTMENT OF STATE
FILE
JUN 30 1971
Arlene J. Edvall
Secretary of State

I, the undersigned, being the duly qualified and acting City Clerk of the City of Windom, Cottonwood County, Minnesota, hereby certify that I have carefully compared the attached and foregoing with the original thereof on file and on record in my office and find the same to be a full, true and complete copy of Ordinance No. 246 of the City of Windom, Minnesota; that said Ordinance had its first reading on May 7, 1971; that it had its second reading and passage on May 21, 1971 and that it was duly published in the Cottonwood County Citizen, the official newspaper of the City of Windom, on May 25, 1971; that under the City Charter the City of Windom said Ordinance became effective immediately upon its passage and publication as above set forth; that attached hereto and made a part hereof is a map of the area annexed by said Ordinance.

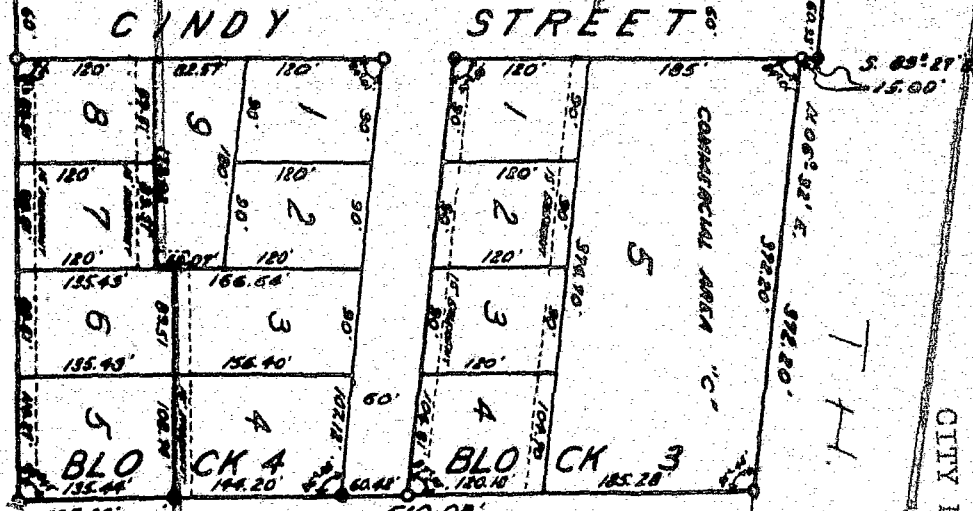
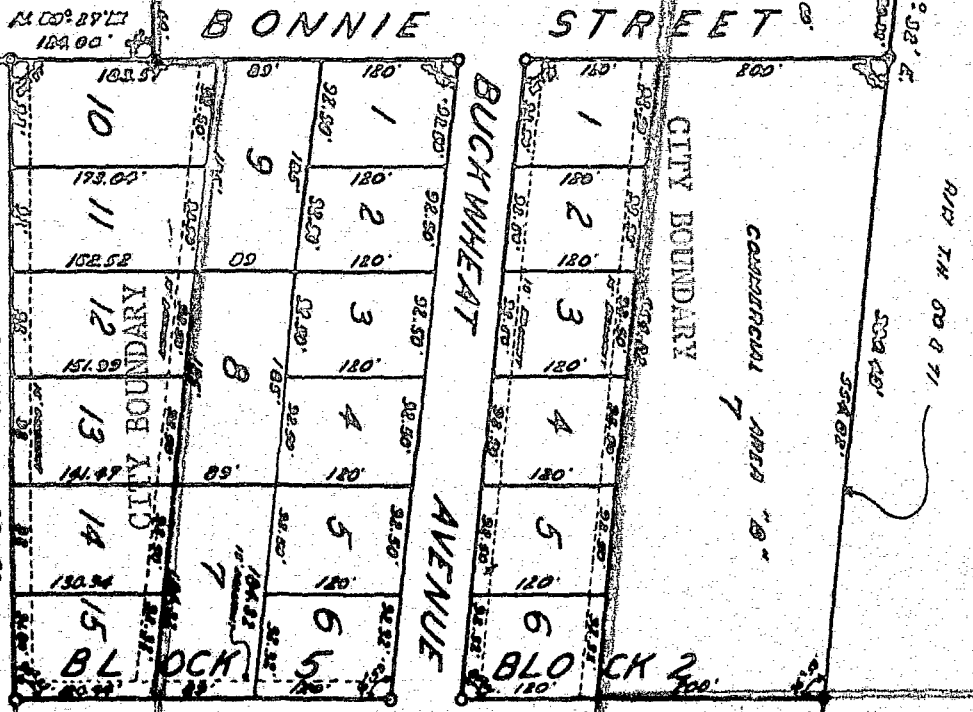
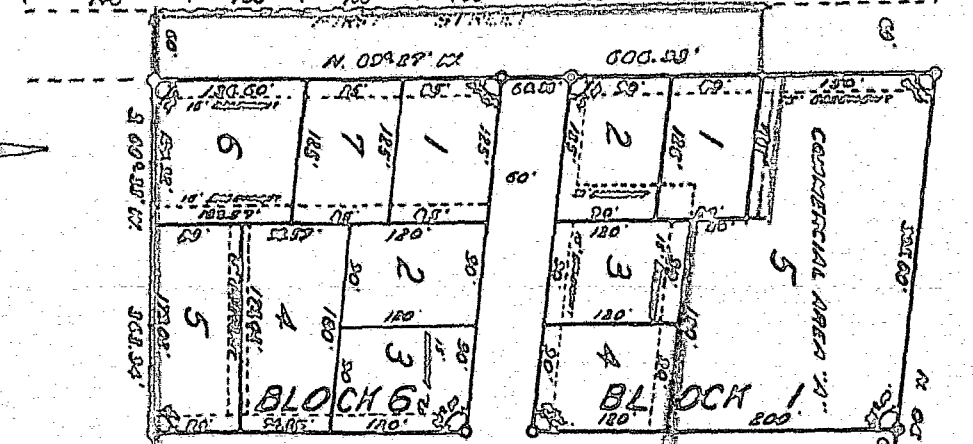
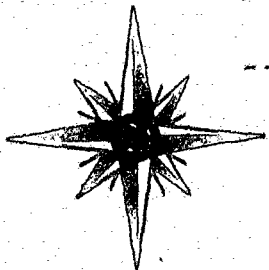
WITNESS my hand and the seal of said City this 26th day of May, 1971.

(Seal)

[Signature]
City Clerk

GRANUM SUBDIVISION

CITY BOUNDARY



EAST LINE SECTION 36-105-30

WEST 1/4 CORNER

THE SW CORNER OF THE NW 1/4 OF THE SW 1/4

SCALE 1" = 100'

#22582
STATE OF MINNESOTA
DEPARTMENT OF STATE
FILED

JUN 30 1971

Arthur J. [Signature]
Secretary of State

CITY BOUNDARY

22582

SW Corner,
NW 1/4 SW 1/4