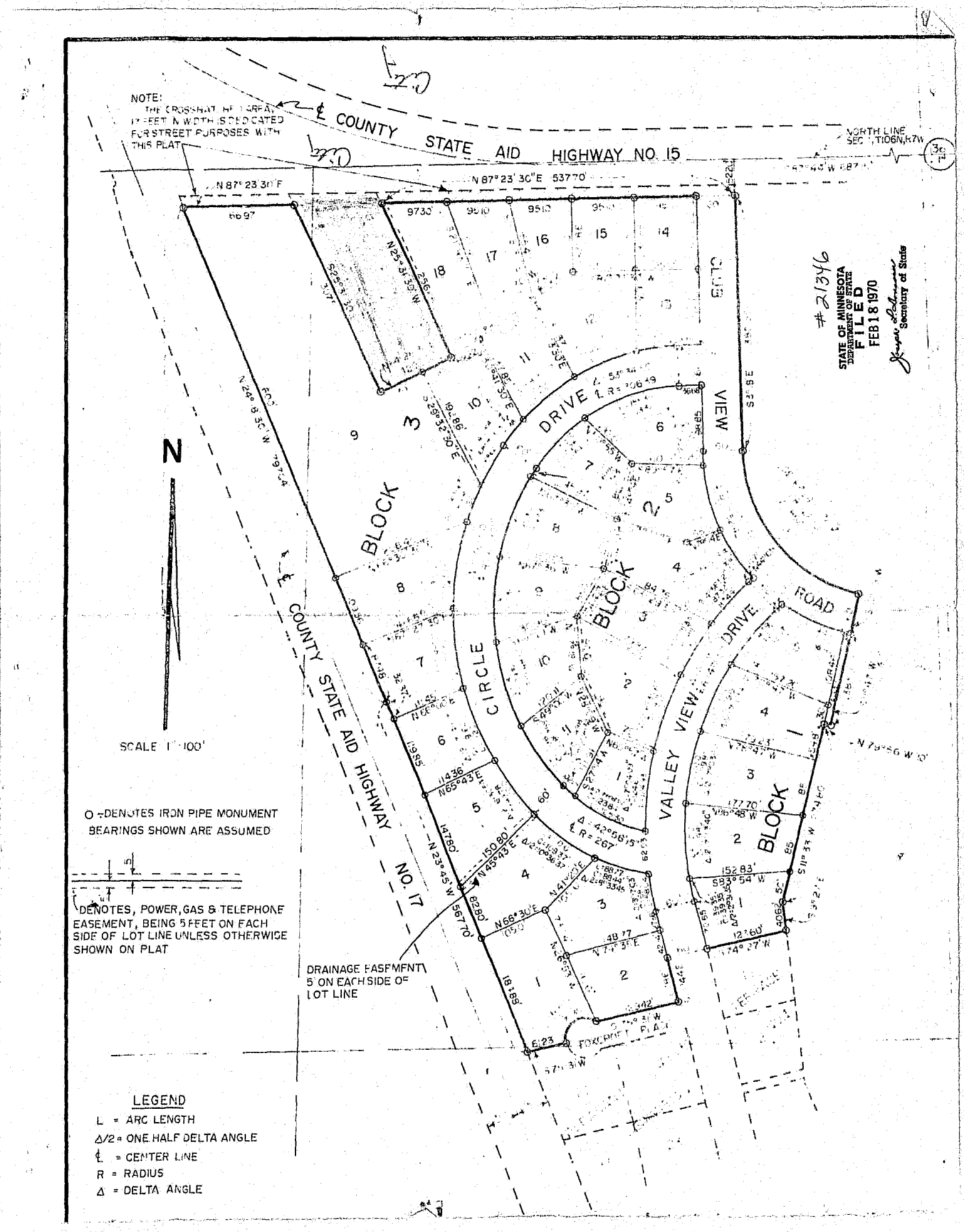


SEE

OVERSIZED

DOCUMENT(S)

21346





STATE OF MINNESOTA  
MUNICIPAL COMMISSION

610 Capitol Square Building  
10th & Cedar Streets  
St. Paul, Minnesota 55101

Feb. 13, 1970

Mr. John S. Carter, Clerk  
City Hall 207 Lafayette St.  
Winona, Minnesota

Re: Docket Number A-1612 Ordinance Number 2135

Dear Sir:

The Minnesota Municipal Commission acknowledges receipt and filing of the above Ordinance and filing fee in accordance with Minn. Session Laws 1969, Chapter 1146, Section 12 and the Rules of Procedure.

According to law, this annexation is final upon filing a copy of the ordinance with the Town Clerk, County Auditor and Secretary of State in addition to the Municipal Commission.

Please refer to the above docket and ordinance numbers in any future reference to this annexation.

Very truly yours,

MUNICIPAL COMMISSION

A handwritten signature in cursive script, reading "Bruce Rasmussen".

Bruce Rasmussen  
Secretary

BR/pdl

c.c. Secretary of State ✓  
County Auditor  
Township  
Attorney  
Municipality

STATE OF MINNESOTA )  
County of Winona ) ss

I, John S. Carter, City Clerk in and for the City of Winona, county and state aforesaid, do hereby certify that I have the care and custody of the ordinances adopted by the City Council of said City; that the annexed and foregoing ordinance is a true, correct and compared copy of the original thereof as adopted by said City Council on the 7th day of July, 1969, numbered 2135, and published in the official news paper of the City on July 9, 1969, and now in full force and effect.

IN WITNESS WHEREOF, I have hereunto set my hand and the seal of said City of Winona, Minnesota, this 9th day of July, 1969.

  
City Clerk

AN ORDINANCE EXTENDING THE CORPORATE LIMITS OF THE CITY OF WINONA  
TO INCLUDE CERTAIN UNINCORPORATED LAND COMPLETELY SURROUNDED  
BY THE LAND WITHIN THE CITY LIMITS AND ABUTTING THEREON

WHEREAS, certain land described below is not presently included in the corporate limits of any incorporated City, Village, or borough; and

WHEREAS, this land is completely surrounded on all sides by lands already included within the corporate limits of the City and is deemed to be urban in character;

NOW, THEREFORE, the City of Winona does ordain:

Section 1. The corporate limits of the City of Winona, Minnesota, are hereby extended to include the unplatted land described as follows, which land now is and has heretofore been completely surrounded by land already included within the City limits;

That part of the Northwest Quarter (NW<sub>4</sub>) of Section One (1), Township One Hundred Six (106) North, Range Seven (7) West of the Fifth Principal Meridian described as follows: Commencing at the Northwest corner of the Northwest Quarter of said Section One (1), thence South 87 degrees 44 minutes West along the North line of said Section One (1) for a distance of 687.15 feet; thence South three (3) degrees 18 minutes East, a distance of 52.20 feet; thence South 87 degrees 23 minutes 30 seconds West, a distance of 537.70 feet to the point of beginning of the parcel to be described; thence North 25 degrees 31 minutes 30 seconds West, a distance of 18.84 feet; thence South 87 degrees 23 minutes 30 seconds West, a distance of 130.28 feet; thence South 25 degrees 31 minutes 30 seconds East, a distance of 326.34 feet; thence North 64 degrees 28 minutes 30 seconds East, a distance of 120.0 feet; thence North 25 degrees 31 minutes 30 seconds West, a distance of 250.05 feet to the point of beginning.

Section 2. The City Clerk is hereby directed to file certified copies of this ordinance with the Minnesota Municipal Commission, the Secretary of State, and the County Auditor.

Section 3. This ordinance shall take effect upon its publication.

Passed at Winona, Minnesota, this 7th day of July, 1969.

James E. Sedall  
Mayor

Attested by:

John A. Carter  
City Clerk

#21346  
STATE OF MINNESOTA  
DEPARTMENT OF STATE  
FILED  
FEB 18 1970  
James E. Sedall  
Secretary of State