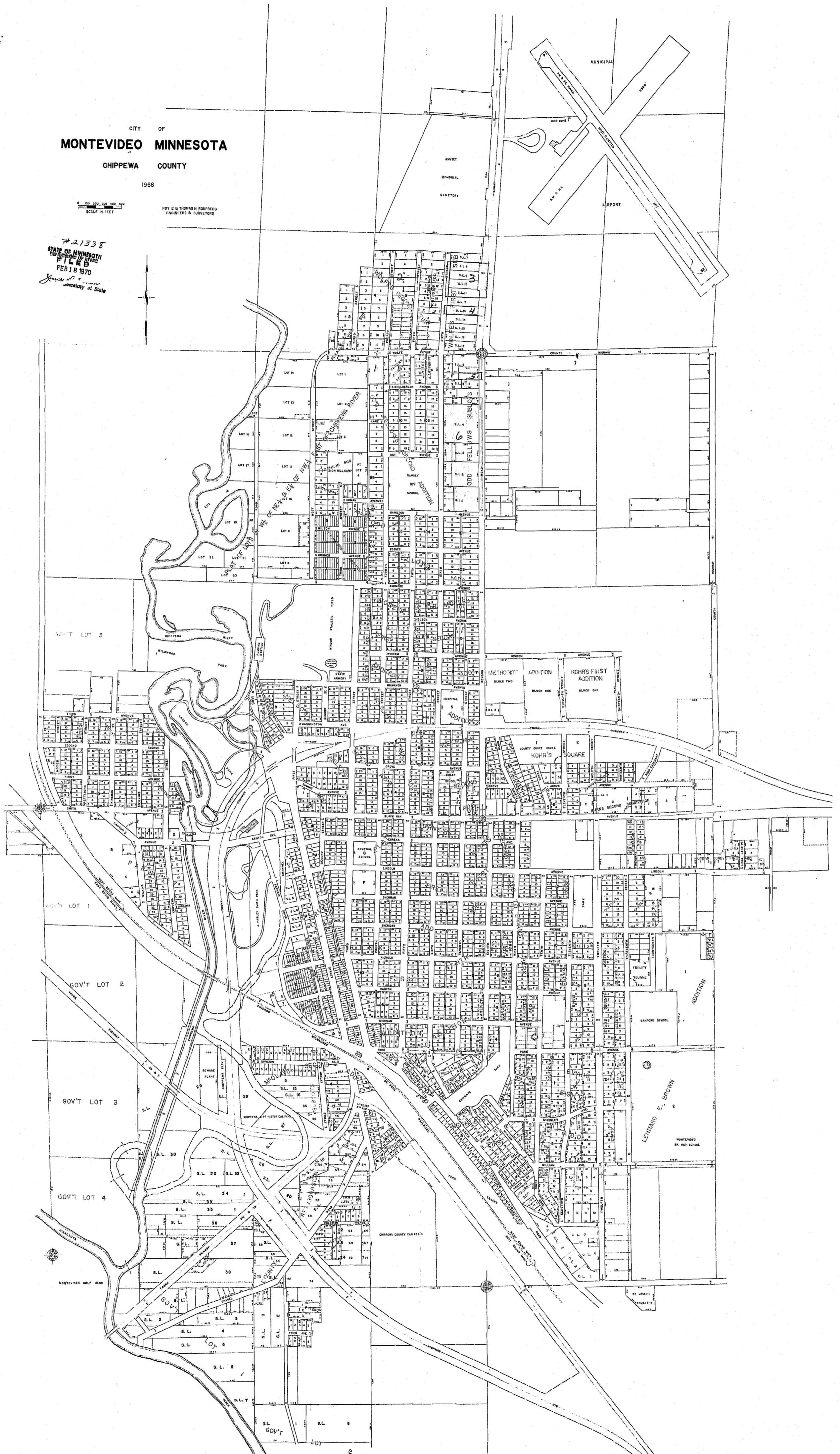


SEE
OVERSIZED
DOCUMENT(S)
21338

CITY OF
MONTEVIDEO MINNESOTA
CHIPPewa COUNTY

1968
BY E. & T. HENRI & ASSOCIATES
ENGINEERS & ARCHITECTS

#21338
STATE OF MINNESOTA
FILED
FEB 18 1970
J. J. [Signature]
COUNTY CLERK



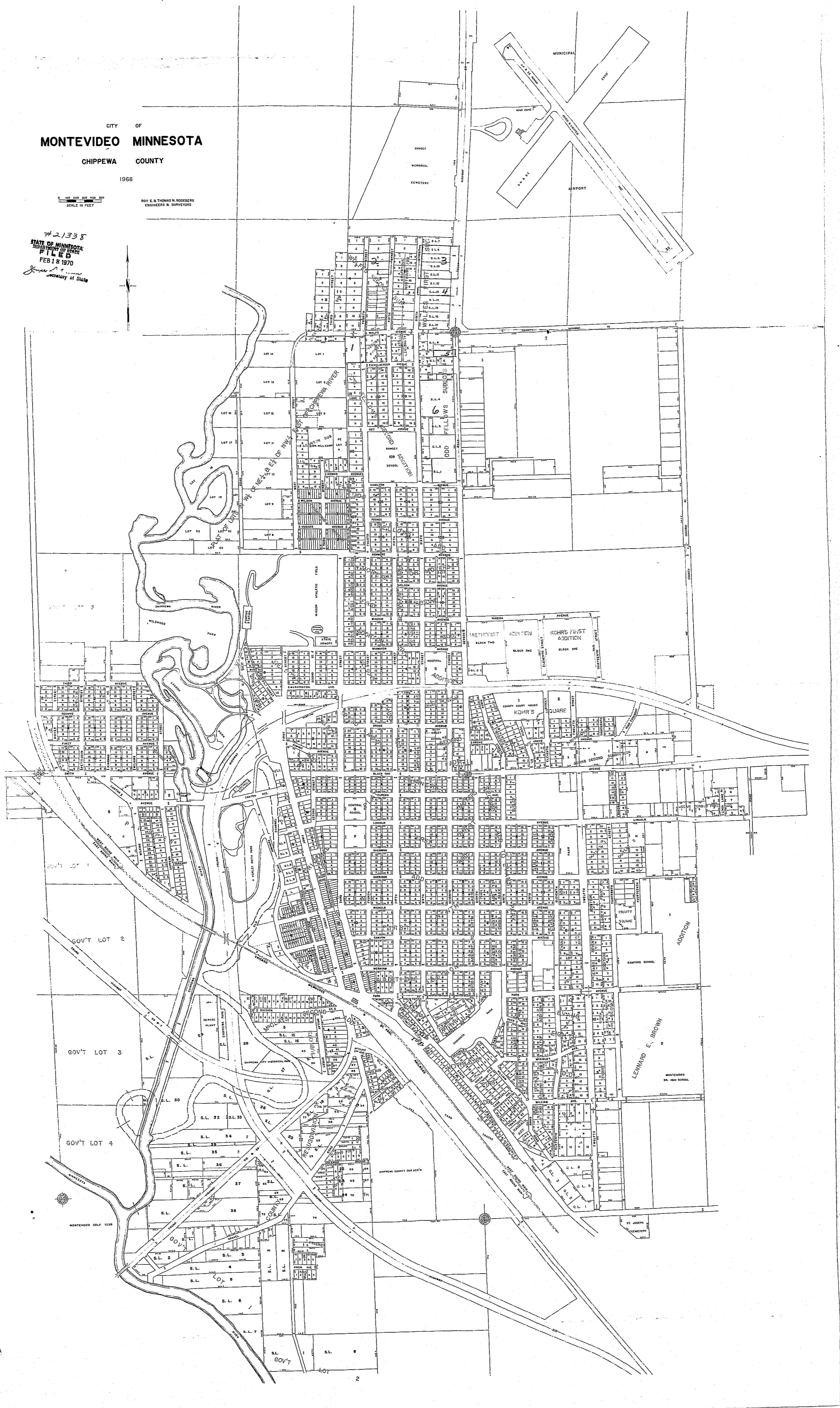
CITY OF
MONTEVIDEO MINNESOTA
CHIPPewa COUNTY

1966

SCALE IN FEET

BY E. THOMAS HANCOCK
ENGINEER & SURVEYOR

#21338
STATE OF MINNESOTA
FILED
FEB 18 1970
COUNTY OF CHIPPewa





Phone: 221-2428

STATE OF MINNESOTA
MUNICIPAL COMMISSION

610 Capitol Square Building
10th & Cedar Streets
St. Paul, Minnesota 55101

Feb. 13, 1970

Mrs. Alice I. Denton, Clk.-Treas.
City Hall 103 Canton Ave.
Montevideo, Minnesota

Re: Docket Number A-1755 Ordinance Number 394

Dear Sir:

The Minnesota Municipal Commission acknowledges receipt and filing of the above Ordinance and filing fee in accordance with Minn. Session Laws 1969, Chapter 1146, Section 12 and the Rules of Procedure.

According to law, this annexation is final upon filing a copy of the ordinance with the Town Clerk, County Auditor and Secretary of State in addition to the Municipal Commission.

Please refer to the above docket and ordinance numbers in any future reference to this annexation.

Very truly yours,

MUNICIPAL COMMISSION

A handwritten signature in cursive script that reads "Bruce Rasmussen".

Bruce Rasmussen
Secretary

BR/pdl

c.c. Secretary of State -
County Auditor
Township
Attorney
Municipality

Montevideo

St. George State

ORDINANCE NO. 394

AN ORDINANCE EXTENDING THE CORPORATE LIMITS OF THE CITY OF MONTEVIDEO TO INCLUDE CERTAIN UNINCORPORATED TRACTS OF LAND THE PERIMETER OF EACH OF WHICH IS MORE THAN SIXTY (60%) PER CENT BORDERED BY THE CITY OF MONTEVIDEO.

WHEREAS, certain tracts of land described below are not presently included within the corporate limits of any incorporated city, village or borough; and

WHEREAS, the City of Montevideo did on September 11, 1969, give Sparta Township notice of its intention to annex the same to the City of Montevideo; and

WHEREAS the perimeter of each of these tracts of land is more than sixty (60%) per cent bordered by the City of Montevideo and are deemed to be urban in character;

The City of Montevideo does ordain:

Section 1. Territory Annexed. The corporate limits of the City of Montevideo, Minnesota, are hereby extended to include the following tracts of land, the perimeter of each of which is more than sixty (60%) per cent bordered by the City of Montevideo:

1. Lot Eleven (11), Block Four (4), Wolfe's Second Subdivision, and a parcel of land in the Northeast Quarter of the Northeast Quarter (NE $\frac{1}{4}$ of NE $\frac{1}{4}$) of Section Seven (7), Township One Hundred Seventeen (117) North, Range Forty (40) West, described as follows: Beginning at a point on the west line of Block One (1), Water's First Addition to the City of Montevideo, a distance of 7 feet south of the Northwest corner of said Block One (1); thence South along the West line of said Block One (1) a distance of 318 feet; thence West along the North line of Eichelberger Avenue extended a distance of 241.5 feet to the west line of said Northeast Quarter of the Northeast Quarter (NE $\frac{1}{4}$ of NE $\frac{1}{4}$); thence North along the West line of said Northeast Quarter of the Northeast Quarter (NE $\frac{1}{4}$ of NE $\frac{1}{4}$) a distance of 318 feet; thence East along a line that is 37 feet South of and parallel to the North line of said Northeast Quarter of the Northeast Quarter (NE $\frac{1}{4}$ of NE $\frac{1}{4}$) a distance of 235.75 feet to the point of beginning, containing 2.67 acres, more or less, including contiguous streets.
2. Lot Three (3), Block Four (4), Wolfe's Second Subdivision and Lots Three (3) and Four (4), Block Three (3), Wolfe's Second Subdivision and the North Half of the East Half (N $\frac{1}{2}$ of E $\frac{1}{2}$) of Lot Five (5), Block Three (3), Wolfe's Second Subdivision, containing 2.15 acres, more or less, including contiguous streets.
3. Sublots Eight (8), Nine (9), Ten (10) and Eleven (11) of Wolfe's First Subdivision, containing 3.42 acres, more or less, including contiguous streets.

4. Sublot Thirteen (13) of Wolfe's First Subdivision containing 1.00 acres, more or less, including contiguous streets.
5. A parcel of land in Sublot Five (5), Odd Fellows Sublots, described as follows: Beginning at the Northeast corner of said Sublot; thence West, along the North line of said Sublot a distance of 228 feet; thence South, parallel to the East line of Section Seven (7), Township One Hundred Seventeen (117) North, Range Forty (40) West, a distance of 76 feet; thence East a distance of 228 feet; thence North 76 feet to the point of beginning, containing 0.45 acres, more or less, including contiguous streets.
6. A parcel of land in Sublot Five (5), Odd Fellows Sublots, described as follows: Beginning at the Southeast corner of said Sublot; thence West, along the South line of said Sublot a distance of 202.5 feet; thence North, parallel to the East line of Section Seven (7), Township One Hundred Seventeen (117) North, Range Forty (40) West, a distance of 75 feet; thence East 202.5 feet; thence South 75 feet to the point of beginning, and all of Sublots Two (2), Three (3) and Four (4), Odd Fellows Sublots and a parcel of land in Sublot One (1), Odd Fellows Sublots, described as follows: Beginning at the Southeast corner of said Sublot One (1); thence West 285 feet along the South line of said Sublot; thence North 282.5 feet parallel to the West line of said Sublot; thence East along the North line of said Sublot a distance of 285 feet; thence South 286 feet to the point of beginning, containing 12.06 acres, more or less, including contiguous streets.

Section 2. Annexed as Residential. All of said tracts being adjacent to "R", residential districts of the City of Montevideo, all of said tracts are hereby zoned as "R", Residential District.

Section 3. Filing. The City Clerk is directed to file certified copies of this ordinance with the Secretary of State, the County Auditor of the county in which the property is located, and the Minnesota Municipal Commission.

Section 4. Effective Date of Annexation. This ordinance takes effect upon passage and publication and the filing of certified copies as directed in Section 2.

Adopted by the City Council of Montevideo, Minnesota, this 24th day of November , 1969.

Carl W. Granrud
President of the Council

ATTEST:

Gene Denton
City Clerk

The foregoing ordinance is hereby approved this 24th day of November , 1969.

John J. Mills
Mayor

#21338
STATE OF MINNESOTA
DEPARTMENT OF STATE
FILED
FEB 18 1970

Joseph L. Donovan
Secretary of State

C E R T I F I C A T E

STATE OF MINNESOTA)
COUNTY OF CHIPPEWA) ss.

On this 29th day of December, 1969, I, the undersigned, ALICE DENTON, being the duly appointed, qualified and acting Clerk of the City of Montevideo, do hereby certify that the attached is a true and correct copy of an Ordinance unanimously passed by the City Council of the City of Montevideo, Minnesota, at a regularly called meeting of said City Council held on November 24, 1969, at which meeting there were four (4) members of the five (5) member Council present and voting; that said Ordinance was duly published on November 27, 1969, in the Montevideo American, a legal newspaper in and for the City of Montevideo, as required by Section 3.08 of the Charter of said City; that more than thirty (30) days have elapsed since the passage and publication of said Ordinance, and that copies thereof have been filed with the Clerk of the Township of Sparta in Chippewa County, Minnesota, the Auditor and Register of Deeds for the County of Chippewa and State of Minnesota, and the Secretary of State of the State of Minnesota.

Alice Denton

City Clerk - Montevideo, Minnesota

#21338
STATE OF MINNESOTA
DEPARTMENT OF REVENUE
FILED
FEB 18 1970
James R. Johnson
Secretary of State