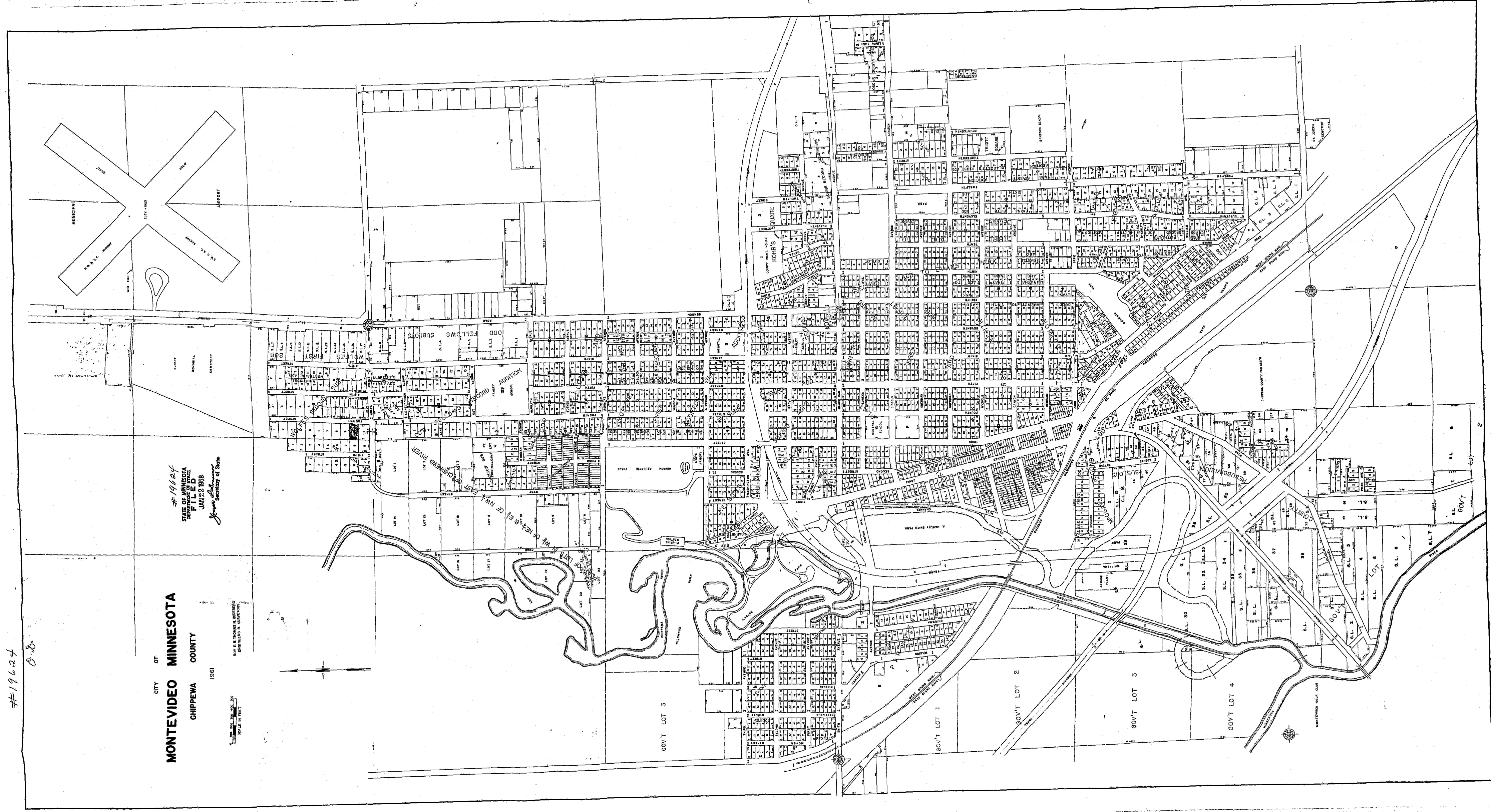


SEE

OVERSIZED

DOCUMENT(S)

19624



Minnesota Municipal Commission
459 Rice Street
St. Paul, Minnesota 55103

January 12, 1968

Mrs. Alice I. Denton, Clerk
City Hall
Montevideo, Minnesota

Re: Annexation Docket Number A-1225

Dear Mrs. Denton:

The Municipal Commission acknowledges receipt of your
Ord. No. 358 and filing fee in accordance with Minn.
Stat. 414.03, Subd. 2 as amended and the Rules of Procedure
to annex unincorporated property.

We find that all the requirements of the law have been met
and accepted the annexation for filing on January 12, 1968.

Please refer to the above docket number in any future
reference to this annexation.

Cordially,

Irving R. Kaldsen
Secretary

IRK/pdl

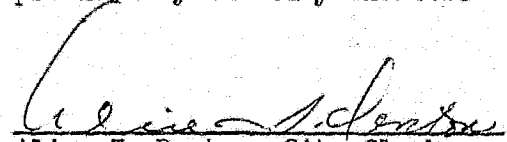
cc: Secretary of State
County Auditor
/

December 18, 1967

STATE OF MINNESOTA)
COUNTY OF CHIPPEWA) SS
CITY OF MONTEVIDEO)

I, Alice I. Denton, duly appointed, qualified and acting City Clerk
in and for the City of Montevideo, do hereby certify that the attached
is a true and correct copy of Ordinance No. 358, duly adopted by the
City Council November 6, 1967, as provided by the City Charter.

Dated December 18, 1967


Alice I. Denton, City Clerk

STATE OF MINNESOTA
DEPARTMENT OF STATE

FILED

JAN 22 1968


Secretary of State

NOV 6 1967

OCT 16 1967

8A

8A

ORDINANCE NO. 358

AN ORDINANCE EXTENDING THE CORPORATE
LIMITS OF THE CITY OF MONTEVIDEO TO
INCLUDE CERTAIN LANDS ABUTTING UPON
THE CITY LIMITS

WHEREAS, a certain petition requesting annexation of the territory hereinafter described was duly presented to the council on the 11th day of September, 1967; and

WHEREAS, the quantity of land embraced within the area described in the petition and bounded as described is less than five (5) acres of platted land, no part of which is included within the limits of an incorporated city, village, or borough; and

WHEREAS, the petition was signed by all the owners of the premises therein described; and

WHEREAS, no objections to the annexation have been received from the town board, county board, or the governing body of any municipality whose boundaries abut upon the boundaries of the land to be annexed; and

WHEREAS, the land described in the petition abuts upon the city limits at the westerly boundary thereof;

The City of Montevideo does ordain:

Section 1. The city council hereby determines (1) that the annexation will be to the best interests of the city and of the territory affected; (2) that the territory described herein abuts upon the city limits and is urban or suburban in character; and (3) that none of said territory is now included within the limits of any city, village, or borough.

Section 2. Territory Annexed. The corporate limits of the city are hereby extended to include the platted land described as follows and the same is hereby annexed to and included within the city as effectually as if it had originally been a part thereof:

Lot Ten (10), Block Four (4), Wolfe's Second Addition in Chippewa County, Minnesota.

Section 3. Filing. The city clerk is hereby directed to file certified copies of this ordinance with the Minnesota Municipal Commission, the Secretary of State, and the County Auditor.

#19624
STATE OF MINNESOTA
DEPARTMENT OF STATE
FILED
JAN 22 1968

James A. Johnson
Secretary of State

Section 4. Effective Date. This ordinance takes effect upon its passage and publication and the filing of the certified copies as directed in Section 3.

Adopted by the council this 6th day of November, 1967.

Levin B. Götthe
President - City Council

Attest:

Wm. A. Seston
City Clerk

The foregoing Ordinance is hereby approved this 9th day of November, 1967.

Leona E. Anderson
Mayor

#19624
STATE OF MINNESOTA
DEPARTMENT OF STATE
FILED
JAN 22 1968

James A. Holmquist
Secretary of State