

Minnesota Municipal Commission
459 Rice Street
St. Paul, Minnesota 55103

June 29, 1967

Mr. Herberg Monsrud
Village Clerk
Roseau, Minnesota

Dear Mr. Monsrud:

SUBJECT: Roseau Annexation A-1115

The Municipal Commission acknowledges receipt of Ord. No. 109 and filing fees in accordance with Minn. Stat. 41A.03, Subd. 2 as amended, and the Rules of Procedure of the Municipal Commission to annex unincorporated property.

We find that all requirements of the law have been met and accepted the annexation for filing as of JUN 29 1967.

Please refer to the above docket number in any future reference to this annexation.

Cordially,

Irving R. Koldson
Secretary

IRK/pdl

cc: Secretary of State
County Auditor
Township Clerk
Attorney

19079

ORDINANCE NO. 109

AN ORDINANCE ANNEXING CERTAIN LANDS TO THE VILLAGE OF ROSEAU, MINNESOTA.

The Village Council of the Village of Roseau, Minnesota, do ordain as follows:

Section 1. That the following described land, situated, lying and being in the County of Roseau, and State of Minnesota, to-wit:

Commencing at the Southeast corner of the NE 1/4 SW 1/4, of Section Thirteen (13), in Township 162 North, Range Forty (40) West, thence North on and along the East line of said NE 1/4 SW 1/4, a distance of 25 feet; thence West, parallel to the South line of said NE 1/4 SW 1/4, a distance of 246.5 feet, to the point of beginning of the tract of land herein intended to be described; thence North, parallel with the East line of said NE 1/4 SW 1/4, a distance of 150 feet; thence West, parallel with the South line of said NE 1/4 SW 1/4, a distance of 80 feet; thence South parallel with the East line of said NE 1/4 SW 1/4, a distance of 150 feet; to a point 25 feet North of the South line of said NE 1/4 SW 1/4; thence East a distance of 80 feet to the point of beginning, being part of Subdivision "E" and part of the S 1/2 of Subdivision "D" of Riverside Subdivisions in said NE 1/4 SW 1/4 of Section 13 in Township 162 North, Range 40 West, according to the recorded plat thereof, and containing 0.55 acres more or less,

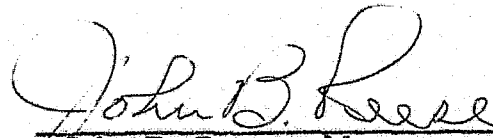
abutting upon the incorporated Village of Roseau, Minnesota, be and the same hereby is annexed to said Village, to become a part of said Village as effectually as if it had originally been a part thereof.

Section 2. This Ordinance is passed pursuant to a petition signed by all the owners of the above described real estate.

Section 3. That said real estate is so conditioned as to be subject to municipal government, and that annexation thereof will be for the best interests of said Village and said real estate.

Section 4. This Ordinance shall take effect upon its passage and publication, and filing a copy thereof with the Minnesota Municipal Commission, the County Auditor for Roseau County, and the Secretary of State for the State of Minnesota.

Dated this 5th day of June, 1967.

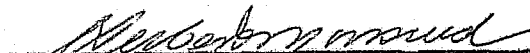

John B. Reese, Mayor

ATTEST:

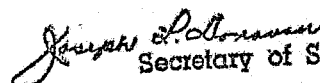

Herbert Monsrud Village Clerk

I, Herbert Monsrud, Village Clerk of the Village of Roseau, Minnesota, hereby certify that the foregoing is a true and correct copy of Ordinance No. 109, as adopted by the Village Council on the 5th day of June, 1967.

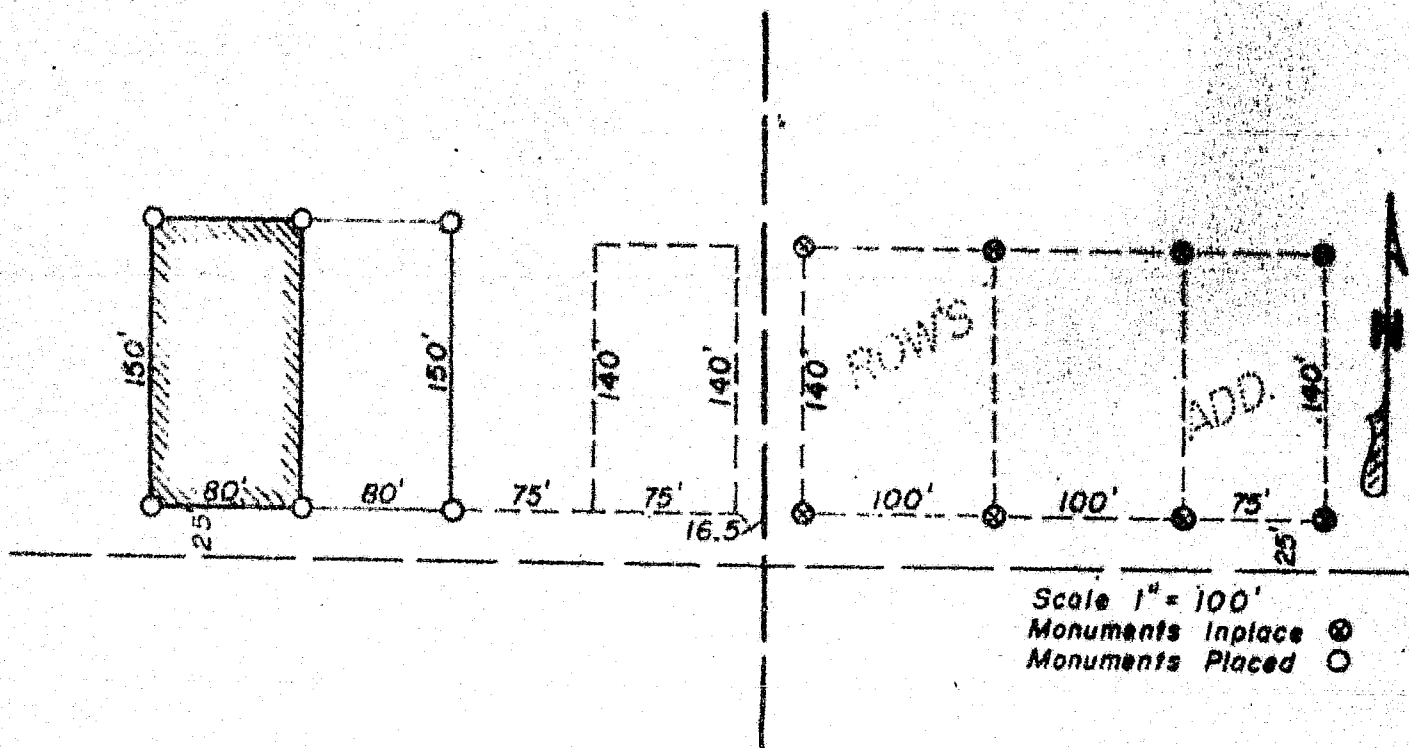
Dated this 5th day of June, 1967.


Herbert Monsrud, Village Clerk

#19079
STATE OF MINNESOTA
DEPARTMENT OF STATE
FILED
JUL 12 1967


Secretary of State

**WAGNER'S ANNEXATION
to the
Village of Roseau, Minnesota**



I, ALVIN H. ANDERSON, County Surveyor, for and within the County of Roseau, do hereby Certify that the above plat correctly represents William Wagner's Annexation of the following description: Commencing at the South East corner of the NE 1/4 SW 1/4, of Section Thirteen (13), in Township 162 North, Range 40 West; thence North on and along the East line of said NE 1/4 SW 1/4; a distance of 25 feet; thence West, parallel to the South line of said NE 1/4 SW 1/4, a distance of 246.5 feet, to the point of beginning of the tract of land herein intended to be described; thence North, parallel with the East line of said NE 1/4 SW 1/4; a distance of 150 feet; thence West, parallel with the South line of said NE 1/4 SW 1/4, a distance of 80 feet; thence South parallel with the East line of said NE 1/4 SW 1/4, a distance of 150 feet; to a point 25 feet North of the South line of said NE 1/4 SW 1/4; thence East, a distance of 80 feet to the point of beginning, being part of Subdivision "E" and part of the S 1/2 of Subdivision "D" of Riverside Subdivisions in said NE 1/4 SW 1/4 of Section 13 in Township 162 North, Range 40 West, according to the recorded plat thereof, and containing 0.55 acre more or less.

FILED
JUL 12 1967 #14079

Alvin H. Anderson
Alvin H. Anderson 8/24/66

CERTIFICATION OF FILING PETITION FOR ANNEXATION TO THE
VILLAGE OF ROSEAU

State of Minnesota)
County of Roseau) ss.

Donald E. Shanahan, being first duly sworn upon oath, deposes and says that on the 6th day of September, 1966, William H. Wagner and Helen A. Wagner filed a Petition for Annexation to the Village of Roseau with the Village Clerk of Roseau, Minnesota; and on the 8th day of February, 1967, your affiant filed a copy of said Petition with the County Board for Roseau County by delivering a true and correct copy thereof to Richard C. Bergan, Roseau County Auditor; and that on the 9th day of February, 1967, he filed a true and correct copy of said Petition for Annexation with James Magnusson, Town Clerk of Jadis Township, Roseau County, Minnesota.

Your affiant further states that said Petition relates to the real estate described as follows:

Commencing at the Southeast corner of the NE 1/4 SW 1/4, of Section Thirteen (13), in Township 162 North, Range Forty (40) West, thence North on and along the East line of said NE 1/4 SW 1/4, a distance of 25 feet; thence West, parallel to the South line of said NE 1/4 SW 1/4, a distance of 246.5 feet, to the point of beginning of the tract of land herein intended to be described; thence North, parallel with the East line of said NE 1/4 SW 1/4, a distance of 150 feet; thence West, parallel with the South line of said NE 1/4 SW 1/4, a distance of 80 feet; thence South parallel with the East line of said NE 1/4 SW 1/4, a distance of 150 feet; to a point 25 feet North of the South line of said NE 1/4 SW 1/4; thence East a distance of 80 feet to the point of beginning, being part of Subdivision "E" and part of the S 1/2 of Subdivision "D" of Riverside Subdivisions in said NE 1/4 SW 1/4 of Section 13 in Township 162 North, Range 40 West, according to the recorded plat thereof, and containing 0.55 acre more or less.

Your affiant further states that said Petition was signed by the following individuals who are all the owners of the above described property: William H. Wagner and Helen A. Wagner.

Your Affiant sayeth not.

Donald E. Shanahan
Donald E. Shanahan

Subscribed and sworn to before me
this 13 day of February, 1967.

E. A. Diercke

E. A. DIERCKE
Notary Public, Roseau County, Minn.
My Commission Expires April 29, 1968.

STATE OF MINNESOTA
DEPARTMENT OF STATE
FILED

JUL 12 1967

James A. Magnusson
Secretary of State