

Minnesota Municipal Commission
459 Rice Street
St. Paul, Minnesota 55103

February 24, 1966

Mr. James O. Hanstad
City Attorney
Detroit Lakes, Minnesota

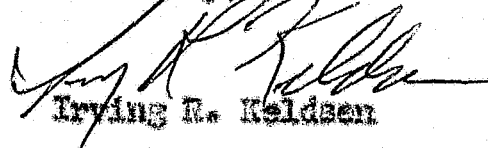
Dear Mr. Hanstad:

The Municipal Commission acknowledges receipt of your Ord. No. 322 and filing fee in accordance with Minn. Stat. 414.03, Subd. 2 as amended and the Rules of Procedure of the Commission to annex unincorporated property.

The Commission finds that all the requirements of the Commission Act have been met and accepted the ordinance for filing on February 24, 1966.

Please refer to Docket Number A-900 in any future correspondence regarding this annexation.

Cordially,


Irving R. Keldsen

IRK/pdl

cc: Secretary of State
County Auditor
Township Clerk

#18022

ORDINANCE NO. 322

AN ORDINANCE EXTENDING THE CORPORATE LIMITS
OF THE CITY OF DETROIT LAKES TO INCLUDE CERTAIN LAND

THE COUNCIL OF THE CITY OF DETROIT LAKES DOES ORDAIN:

Section 1: A petition has been filed with the governing body of the City of Detroit Lakes, Minnesota, by the owner of the following described real estate to have such land included within the City of Detroit Lakes, Minnesota:

All of Block 3, Nor-Lake Second Addition, located in Section 26, Township 139 North, Range 41 West of the Fifth Principal Meridian in Becker County, Minnesota.

All of the following described tract: A tract of land in the NW $\frac{1}{4}$ of Section 26, Township 139 North, Range 41 West of the 5th P. M., described as follows:

Beginning at a point which point is the Southeast corner of Block 3, Nor-Lake Second Addition; thence North 00° 53' East a distance of 340.0 feet; thence South 89° 25' East a distance of 620.30 feet; thence South 00° 53' West a distance of 1320.6 feet to the South Line of the NW $\frac{1}{4}$ of said Section 26; thence North 89° 07' West on the said Couth Quarter Line to a point on the said Quarter Line 1178.0 feet East of the Southwest Corner of the NW $\frac{1}{4}$; thence North 00° 53' East 975.5 feet to a point which intercepts the North line of Northland Street if extended; thence Westerly 136.35 feet, more or less, on said extended North line of Northland Street to the point of beginning.


Section 2: The City Council hereby determines; (1) that the annexation will be to the best interests of the City of Detroit Lakes, Minnesota, and of the territory affected; (2) that the territory described herein abuts upon the City of Detroit Lakes and is so conditioned as property to be subjected to the City government.

Section 3: Therefore, the City of Detroit Lakes, Minnesota, hereby ordains and declares that the property hereinbefore described be and the same is hereby annexed to, and included in the City of Detroit Lakes, Minnesota, as effectually as if it had originally been a part thereof.

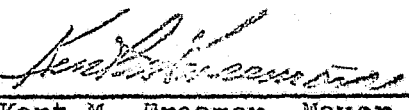
Section 4: This Ordinance shall be final and shall take effect and be in force from and after filing certified copy thereof with the Minnesota Municipal Commission, the County Auditor and the Secretary of State, and from and after its passage and publication.


Passed and adopted this 1st day of February, 1966.

Approved this 1st day of February, 1966.


L. E. Learned, City Clerk

#18022
STATE OF MINNESOTA
DEPARTMENT OF STATE
FILED
FEB 28 1966


Kent M. Freeman, Mayor


Secretary of State

CERTIFICATION

STATE OF MINNESOTA)
COUNTY OF BECKER)SS
CITY OF DETROIT LAKES)

I, L. E. Learned, Clerk-Treasurer of the City of Detroit Lakes, Minnesota, do hereby certify that Ordinance No. 322, an Ordinance extending the corporate limits of the City of Detroit Lakes to include certain land, and attached hereto, is a true and correct copy of Ordinance No. 322, on file and of record in the office of the Clerk-Treasurer of the City of Detroit Lakes, Minnesota.

It is further certified that said Ordinance was passed and adopted by a unanimous vote of the City Council at a regular meeting held February 1, 1966, and approved by the Mayor of the City on said date.

Dated at Detroit Lakes, Minnesota, this 3rd day of February, 1966.

L. E. Learned
L. E. Learned
City Clerk
Detroit Lakes, Minnesota

#18022

STATE OF MINNESOTA
DEPARTMENT OF STATE
FILED
FEB 28 1966

Joseph L. Donovan
Secretary of State

#18022
08

RECEIVED
FEB 9 1966
STATE AUDITOR

OFFICE OF CITY ATTORNEY

CITY OF DETROIT LAKES MINNESOTA

A. R. JOHNSON, MAYOR
LLOYD E. LEARNED, CLERK-TREASURER
JAMES O. RAMSTAD, CITY ATTORNEY

☆ "412 LAKES WITHIN A RADIUS OF 25 MILES"

November 9, 1965

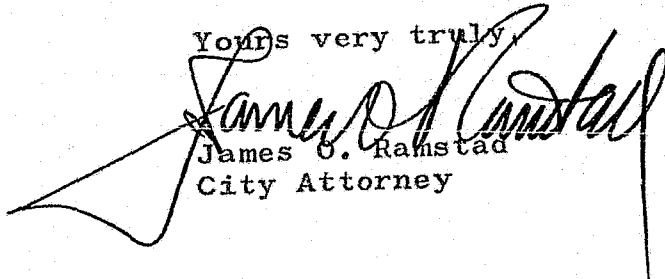
Mr. Joseph Donovan
SECRETARY OF STATE
St. Paul, Minnesota 55101

Dear Sir:

We are enclosing a Certificate of
filing a Petition of Annexation.

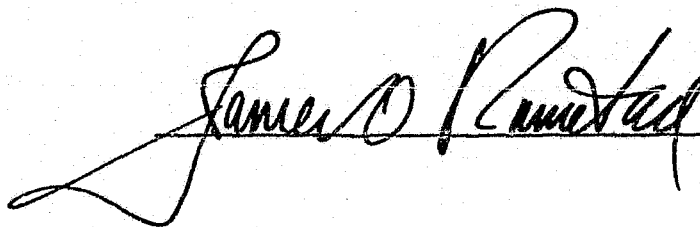
JOR:mf
enc

Yours very truly,


James O. Ramstad
City Attorney

CERTIFICATE

JAMES O. RAMSTAD, City Attorney of Detroit Lakes, Minnesota, hereby certifies that on the 3rd day of November, 1965, he mailed to the Clerk of Detroit Township (26-139-41) and to the County Auditor of Becker County, copies of the Petition for annexation of property in Section 26, Township 139, Range 41, Becker County, Minnesota, signed by Independent School District No. 22 of Detroit Lakes, Minnesota, asking that the said tract be annexed to the City of Detroit Lakes, Minnesota.



Subscribed and sworn to before
me this 9th day of November, 1965.



Notary Public, Becker County, Minn.
My Commission expires: Oct. 27, 1971.

OFFICE OF CITY ATTORNEY

CITY OF DETROIT LAKES MINNESOTA

A. R. JOHNSON, MAYOR
LLOYD E. LEARNED, CLERK-TREASURER
JAMES O. RAMSTAD, CITY ATTORNEY

★ "412 LAKES WITHIN A RADIUS OF 25 MILES"

RECEIVED

FEB 11 1966

STATE AUDITOR

AUDITOR'S OFFICE
State of Minnesota
State Office Building
St. Paul, Minnesota 55101

Gentlemen:

We herewith file a copy of Detroit Lakes Ordinance No. 322, together with a map showing the property in relationship to Detroit Lakes.

You will note on the map that we have made a penciled correction with reference to the number of acres. There was a misprint of "2" instead of "1". We have reduced the acreage to 18 and a fraction.

The filing fee has been paid, and pursuant to the requirements of Stat. 414.03 we filed a copy of Annexation Ordinance #322.

Yours very truly,

JOR:mf
enc

James O. Ramstad
James O. Ramstad
City Attorney

STATE OF MINNESOTA
DEPARTMENT OF STATE
FILED
FEB 28 1966

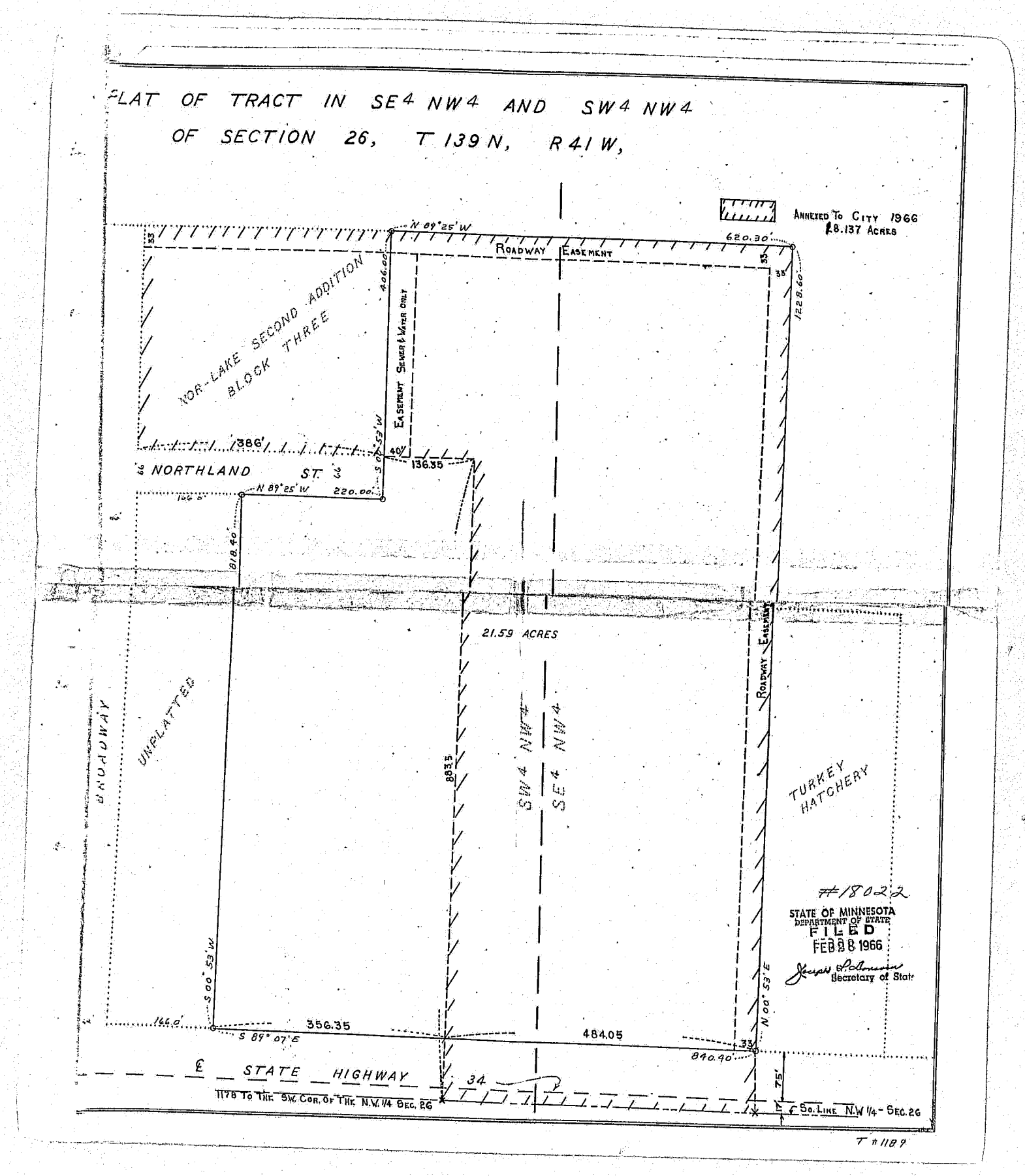
Joseph A. Olson
Secretary of State

SEE

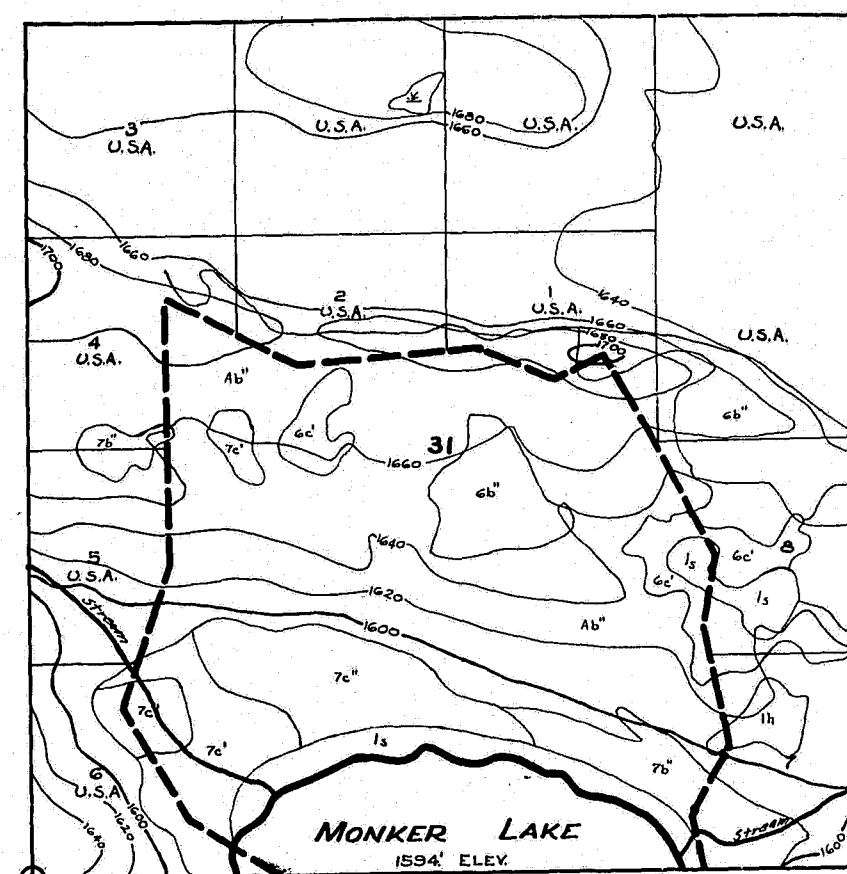
OVERSIZED

DOCUMENT(S)

18022



SUPERIOR NATIONAL FOREST
SECTION 31, T.62N., R.1E., 4TH PM.
 Cook County, Minnesota
 APPARENT OMITTED LAND



Comparative record meander line of that part of Monk Lake within section 31 and the actual shore line from U.S. Geological Survey topographic map.

- LEGEND**
- Scale 1 inch = 10 chains
 - Record meander line
 - Actual shore line (1957 aerial photo)
 - 1000 Contours from U.S.G.S. Quadrangle map (1960)
 - Timber type
 - Indicated Error Evidence

COVER TYPES		TIMBER COVER		DENSITY CLASSIFICATION	
		TIMBER	COVER		
A	Aspen-paper birch	b	Saplings	1	Poor
e	Spruce-fir	c	Poles	2	Medium
7	Black spruce				
1h	Upland brush				
1s	Lowland brush				

OWNERSHIP		STATUS	
1964 OWNER		ACQUISITION DATE	
Lot 1-U.S.A.	by purchase	1935	
Lot 2-U.S.A.	by purchase	1935	
Lot 3-U.S.A.	by purchase	1935	
Lot 4-U.S.A.	by purchase	1935	
Lot 5-U.S.A.	by purchase	1935	
Lot 6-U.S.A.	by purchase	1935	
Lot 7- State of Minnesota			
Lot 8			
NE 1/4 U.S.A.	by purchase	1935	
NW 1/4 U.S.A.	by purchase	1935	
E 1/2 NE 1/4 U.S.A.	by purchase	1935	