

Secretary of the State of Minnesota and the County Auditor of Wilkin County, Minnesota.

Section 4--Effective date. This ordinance takes effect upon its passage and publication and the filing of the certified copies as directed in Section 3.

Adopted by the Council this 14th day of October, 1963.

*Ralph H. Posschl*  
/s/ Ralph H. Posschl  
RALPH H. POSSEHL, Mayor

ATTEST:

*Winifred A. Emerson*  
/s/ Winifred A. Emerson  
WINIFRED A. EMERSON, Clerk  
(SEAL)

Published October 17, 1963.

I, Winifred A. Emerson, Village Clerk of the Village of Wolverton, Wilkin County, Minnesota, hereby certify that I have compared the foregoing copy of the above Ordinance No. 28 with the original adopted by the Village Council of the Village of Wolverton, Minnesota, on the 14th day of October, 1963, and that the same is a true and correct copy of the whole thereof.

WITNESS my hand and seal this 18th day of October, 1963.

*Winifred A. Emerson*  
WINIFRED A. EMERSON, Village Clerk  
Wolverton, Minnesota

#16579  
STATE OF MINNESOTA  
DEPARTMENT OF STATE  
FILED  
OCT 23 1963  
*Joseph L. Anderson*  
Secretary of State

*Civil*

Minnesota Municipal Commission  
51 State Office Building  
St. Paul 1, Minnesota

October 22, 1963

Mr. Anthony G. Gospodar  
Attorney at Law  
301 So. 5th Street  
Brockenridge, Minnesota

Dear Mr. Gospodar:

The Minnesota Municipal Commission acknowledges receipt of your Ordinance annexing lands to the Village of Wolverton in accordance with Minnesota Statutes 1961, Section 234.03, Subdivision 2, as amended by Laws 1963, Chapter 607, Section 6.

The Commission finds that all the requirements of the Municipal Commission Act have been met and accepted the Ordinance for filing on October 22, 1963.

We are returning your check for \$10 since your other check covered this annexation. If there is any future correspondence or reference to this ordinance, please refer to Docket Number A-542.

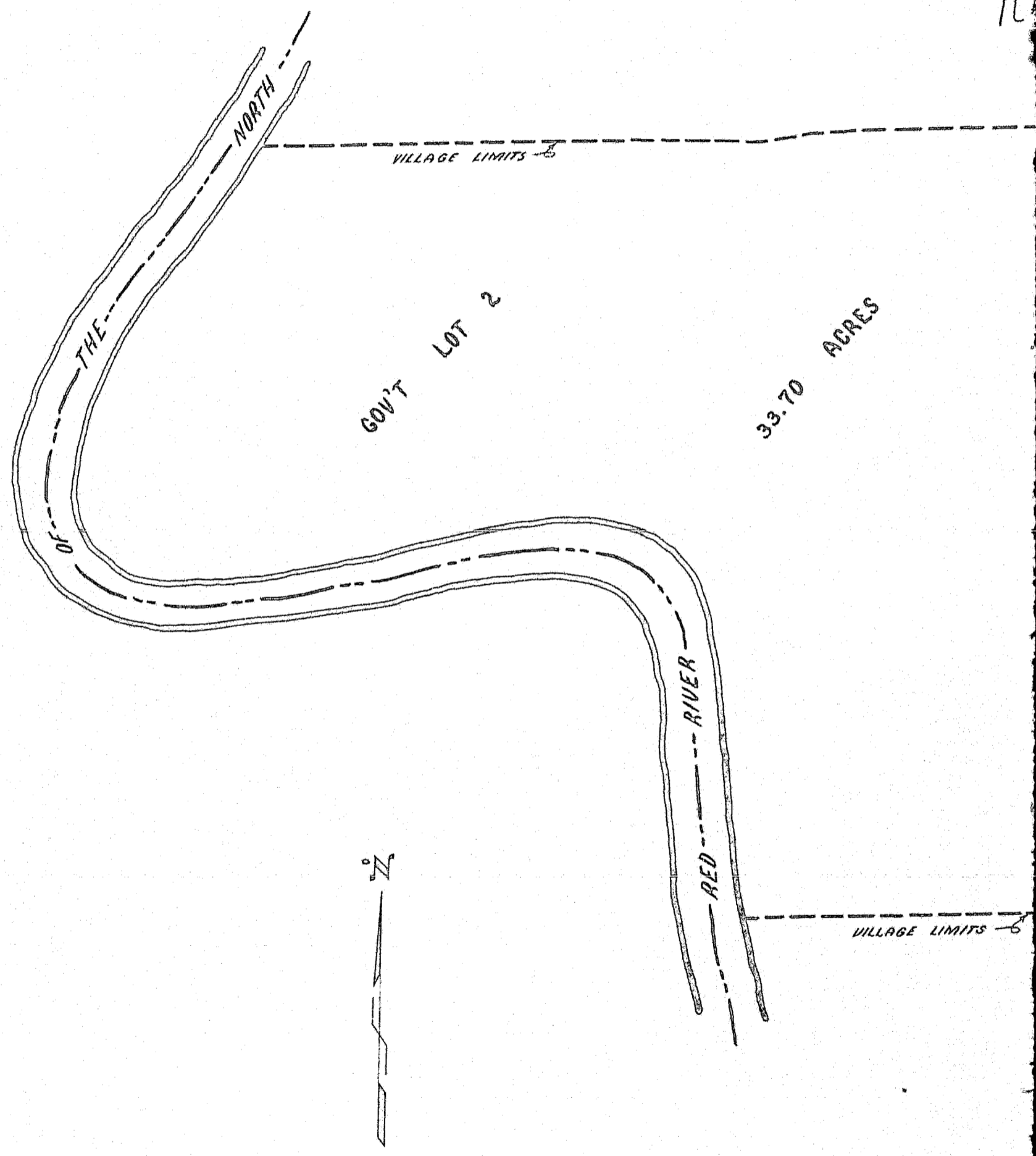
Cordially,

Irving R. Koldson  
Secretary

cc: County Auditor  
Secretary of State  
Village of Wolverton

16579

R



NORTH

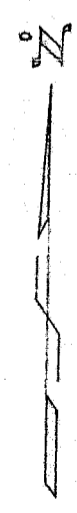
VILLAGE LIMITS

GOV'T LOT 2

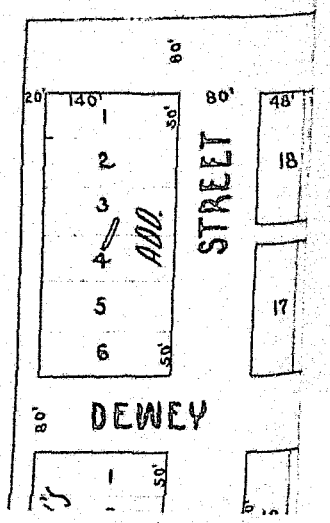
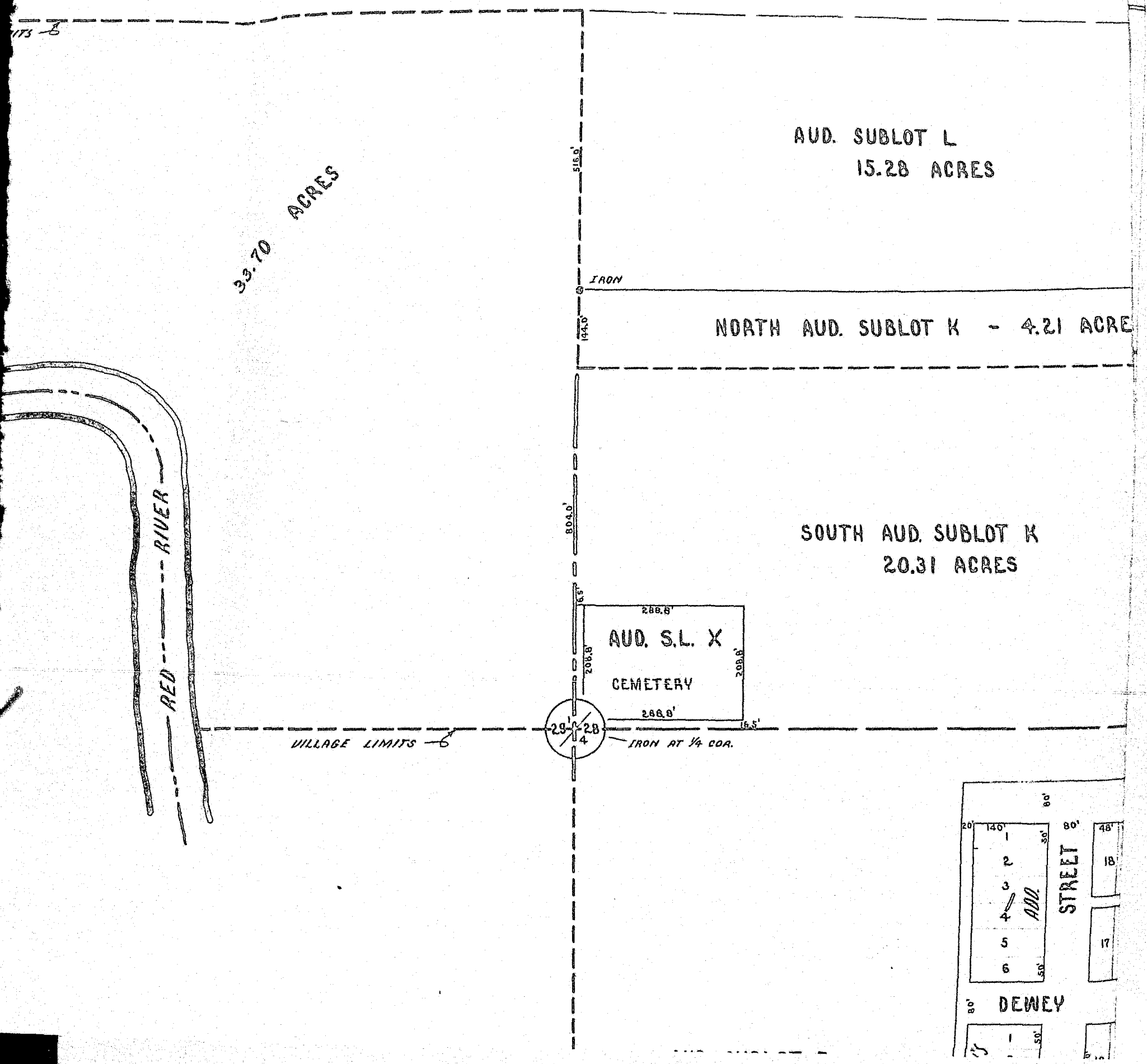
33.70 ACRES

RED RIVER

VILLAGE LIMITS

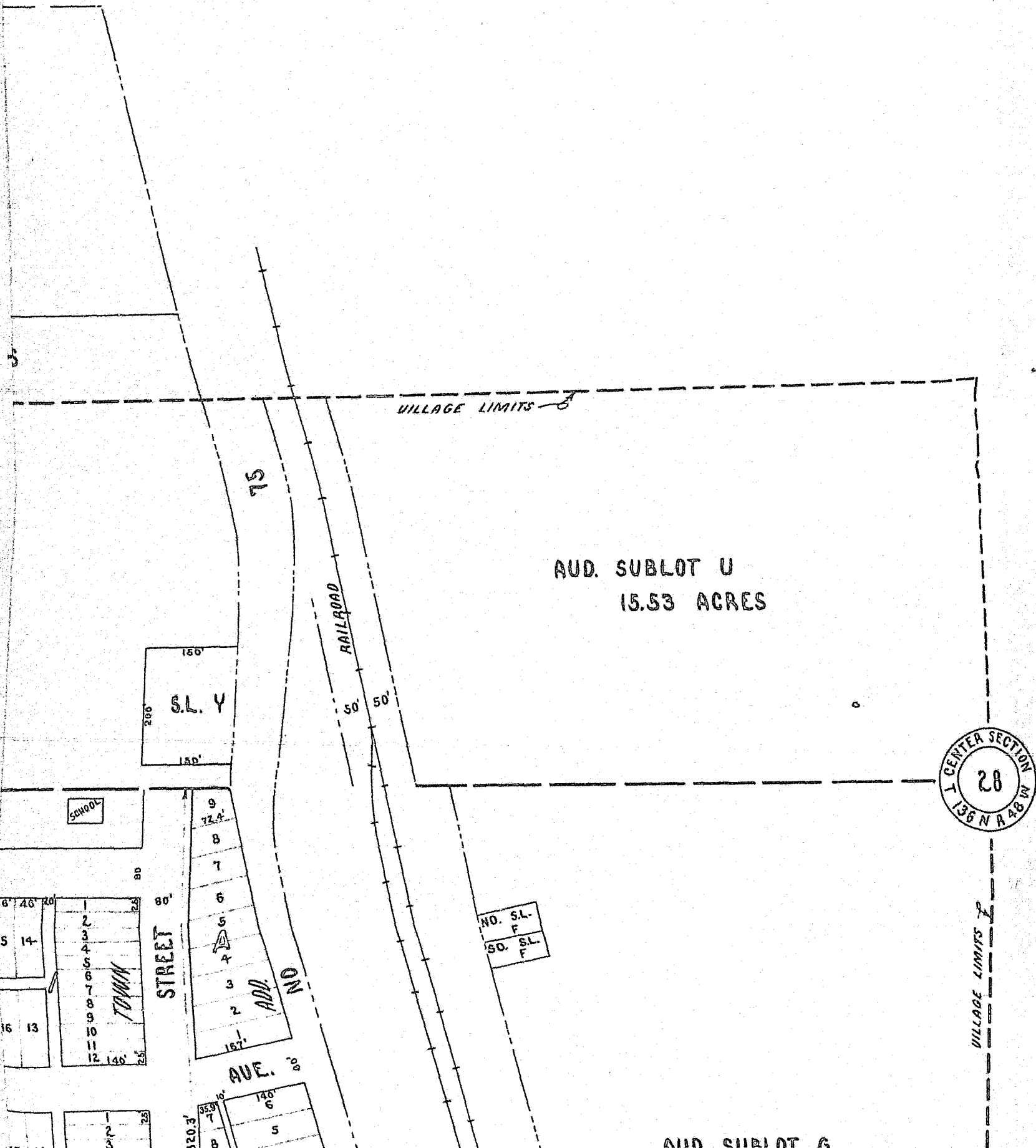


RE-SURVEY OF WOLFE



BARTON

VILLAGE



SEC.

S

I, JOH  
 THE LAWS OF  
 DURING THE  
 OF COUNTY C  
 AS PROVIDED  
 OF THE VILLAGE  
 A TRUE AND  
 RECORDS ON  
 WILKIN COUNT  
 GUIDANCE OF  
 GROUND AT  
 ARE IN FEET  
 LANDS WITH  
 THAN THOS  
 DATE AUGU

AUD. SUBLT G

SEC. 28 - T 136 N - R 48 W  
WILKIN CO. MINN.

~ SURVEYOR'S CERTIFICATE ~

I, JOHN REBER, A DULY REGISTERED LAND SURVEYOR UNDER THE LAWS OF THE STATE OF MINNESOTA, DO HEREBY CERTIFY THAT DURING THE MONTH OF AUGUST, 1957, BY DIRECTION OF THE BOARD OF COUNTY COMMISSIONERS OF WILKIN COUNTY, MINNESOTA AND AS PROVIDED FOR BY SECTION 272-19 M.S. I MADE A FIELD SURVEY OF THE VILLAGE OF WOLVERTON, AND THE ACCOMPANYING PLAT IS A TRUE AND CORRECT REPRESENTATION OF MY SURVEY AND EXISTING RECORDS ON FILE IN THE OFFICE OF THE REGISTER OF DEEDS OF WILKIN COUNTY, MINNESOTA, THAT IRON MONUMENTS FOR THE GUIDANCE OF FUTURE SURVEYS HAVE BEEN FIRMLY PLACED IN THE GROUND AT THE POINTS SHOWN ON THE PLAT; THAT ALL DISTANCES ARE IN FEET AND HUNDRETHS OF A FOOT; THAT THERE ARE NO WET LANDS WITHIN THE AREA PLATTED AND NO PUBLIC HIGHWAYS OTHER THAN THOSE SHOWN ON THE PLAT.  
DATE AUGUST 10, 1957.

*John Reber*  
JOHN REBER  
MINN REG NO 2650

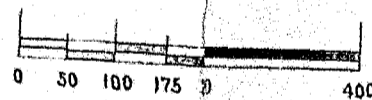


VILLAGE LIMITS

SUBLOT A

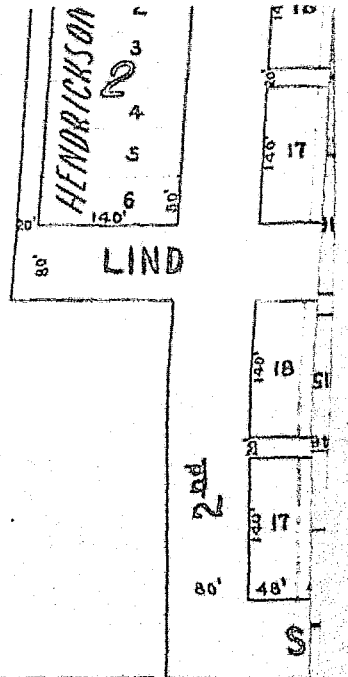
AUDITOR'S SUBLOTS

|              |   |      |       |
|--------------|---|------|-------|
| SUBLOT A     | - | .32  | ACRES |
| SUBLOT B     | - | .24  | ACRES |
| SUBLOT C     | - | .21  | ACRES |
| SUBLOT D     | - | .17  | ACRES |
| NORTH S.L. F | - | .12  | ACRES |
| SOUTH S.L. F | - | .13  | ACRES |
| SUBLOT M     | - | .08  | ACRES |
| SUBLOT N     | - | .37  | ACRES |
| SUBLOT O     | - | .27  | ACRES |
| SUBLOT P     | - | .09  | ACRES |
| SUBLOT Q     | - | .08  | ACRES |
| SUBLOT R     | - | .14  | ACRES |
| SUBLOT S     | - | .44  | ACRES |
| SUBLOT T     | - | .65  | ACRES |
| SUBLOT W     | - | .44  | ACRES |
| SUBLOT X     | - | 1.38 | ACRES |
| SUBLOT Y     | - | .69  | ACRES |



S.C.E.

AUD. SUBLLOT E  
25.58 ACRES



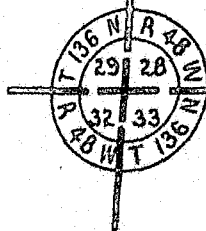
VILLAGE LIMITS

NORTH AUD. SUBLLOT J  
18.01 ACRES

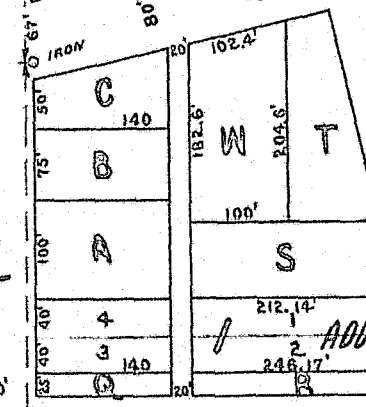
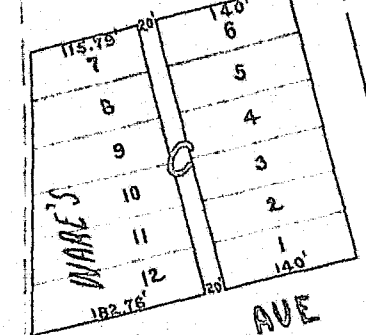
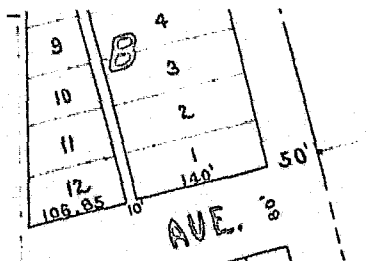
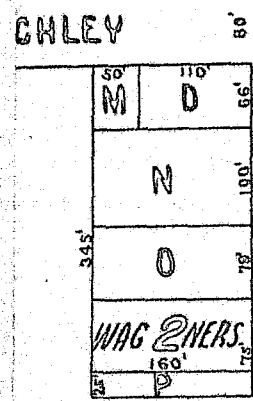
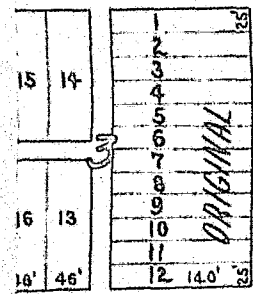
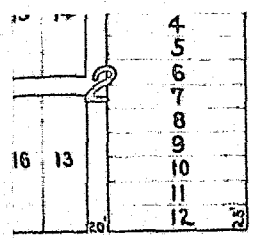
SOUTH AUD. SUBLLOT J  
20.00 ACRES



SCALE

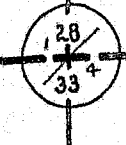
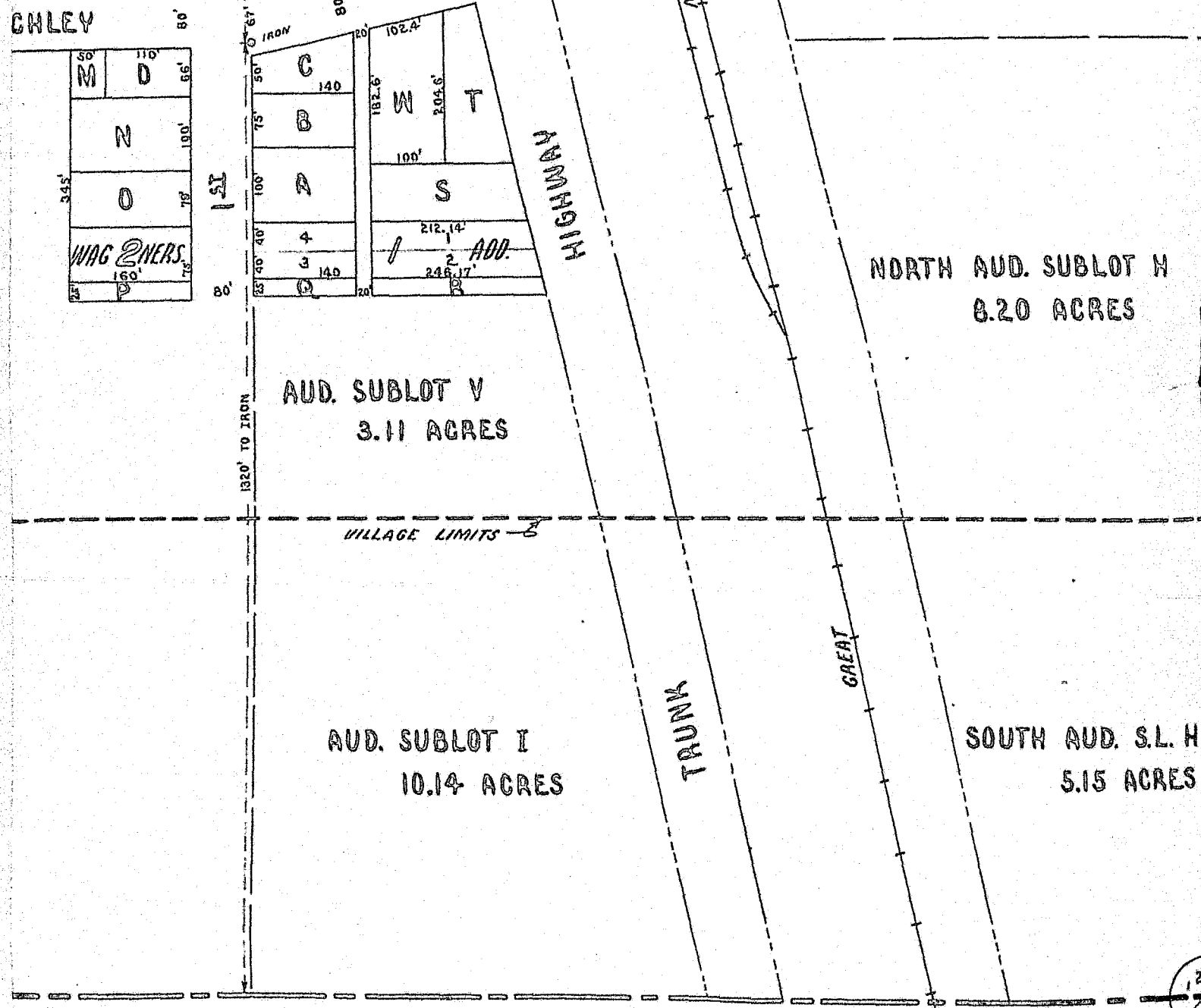






22.43 ACRES

STATE OF M  
COUNTY OF  
ON  
PUBLIC AP  
WHO EXEC  
THAT HE ST  
AND PURP



2.43 ACRES

STATE OF MINNESOTA }  
COUNTY OF WILKIN } SS

ON THIS 3rd DAY OF Sept 1957, BEFORE ME A NOTARY PUBLIC APPEARED JOHN REBER TO ME KNOWN TO BE THE PERSON WHO EXECUTED THE FOREGOING CERTIFICATE AND HE ACKNOWLEDGED THAT HE SIGNED THE SAME OF HIS OWN FREE WILL FOR THE USES AND PURPOSES THEREIN SET FORTH.

*W. Erdmann*

NOTARY PUBLIC  
MY COMMISSION EXPIRES 12-23-62

AUD. SUBLOT N  
8.20 ACRES

*John Reber*  
*1957*

SOUTH AUD. S.L. W  
5.15 ACRES

