

ORDINANCE NO. 1176  
AN ORDINANCE Annexing to the City of  
Rochester, Minnesota, Certain Unplat-  
ted Lands Not Exceeding 200 Acres  
in Area, All Being in the Northwest  
Quarter (NW¼) of Section Three (3),  
Township 106 North, Range 74 West,  
Olmsted County, Minnesota.

The Common Council of the City of  
Rochester do ordain:

Section 1. A petition has been filed  
with the Common Council of the City  
of Rochester, signed by the owner  
of all the land described therein, request-  
ing the Common Council to annex said  
land to the City of Rochester. The land  
described in said petition for annexation  
is located in Olmsted County, Minne-  
sota, and is described as follows:

Commencing at a point on the  
North line of the Northwest Quarter  
(NW¼), Section Three (3), Town-  
ship 106, Range 74, 83 rods 2.79 feet  
West of the Northeast (NE) corner  
thereof, thence West along the North  
line of said Northwest Quarter (NW¼)  
8 rods, thence South parallel with the  
East line of said Northwest Quarter  
(NW¼) 20 rods, thence East parallel  
with the North line of said North-  
west Quarter (NW¼) 8 rods, thence  
North parallel with the East line of  
said Northwest Quarter (NW¼) 20,  
to the place of beginning.

Section 2. All of the lands included in  
said petition is unplatted land and  
amounts to 1.0 acres, more or less.

Section 3. The Common Council of the  
City of Rochester does hereby determine  
that the lands described in Section 1  
abut upon the present territorial limits  
of the City of Rochester, are so condi-  
tioned as to be properly subjected to Mu-  
nicipal Government, and the annexation  
of said lands will be in the best inter-  
ests of the City of Rochester and of the  
lands affected.

Section 4. Therefore, the lands describ-  
ed in Section 1 above are hereby annex-  
ed, added to and made a part of the  
City of Rochester, Minnesota, as effectual-  
ly as if they had originally been a part  
thereof.

Section 5. That present and future own-  
ers of the area annexed by this Ordinance  
are hereby notified that in addition to  
the usual assessments, it is the inten-  
tion of the Common Council to assess  
against benefited property all or a por-  
tion of the cost of any storm sewer,  
water tower and trunk line sanitary  
sewer construction, heretofore or here-  
after undertaken to serve the area an-  
nexed.

Section 6. That present and future own-  
ers of the area annexed by this Ordinance  
are hereby notified that by such an-  
nexation, the City of Rochester does  
not commit itself to extend its services  
and make local improvements in the  
area annexed on an assessment basis;  
and that the City of Rochester, through  
its Common Council, specifically reserves  
the right to annex additional areas to  
the City of Rochester and extend City  
services and make local improvements  
to such other later annexed areas in  
advance of improvements to the area  
hereby annexed if the same appears  
more reasonable and economical.

Section 7. This ordinance shall take  
effect and be in force from and after  
its official publication and from and  
after the filing of a certified copy here-  
of with the Minnesota Municipal Commis-  
sion, the County Auditor and the Secre-  
tary of State.

Passed and adopted by the Common  
Council of the City of Rochester, Minne-  
sota, this 1st day of October, 1962.

ALBERT J. TINGLEY

President of said Common  
Council

Attest: ELFREDA REITER  
City Clerk

Approved this 2nd day of October, 1962.

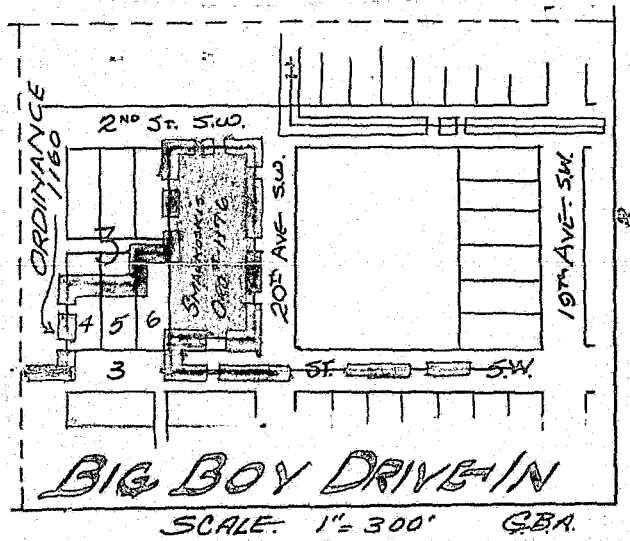
ALEX P. SMEKTA

Mayor of said City

(Seal of the City of  
Rochester, Minnesota.)

(10/6 10/13)

#16071



ord # 1176

STATE OF MINNESOTA

COUNTY OF OLSTED

CITY OF ROCHESTER, SS

I, Elfreda Reiter, City Clerk of the City of Rochester, Minnesota do hereby certify that I have compared the foregoing copy of an ordinance with the original ordinance on file in my office, and that the foregoing is a true and correct copy of said ordinance and of the whole thereof,

Witness my hand this 5th day of December, A.D. 1962.

Elfreda Reiter  
City Clerk of the City of  
Rochester, Minnesota

(Seal of the City of  
Rochester, Minnesota)

#16071  
STATE OF MINNESOTA  
DEPARTMENT OF STATE  
FILED  
DEC 19 1962  
Joseph L. Allamano  
Secretary of State