

MINNESOTA, 1960

Ordinance for the Annexation of Property

Introduced by Councilman Donald A. Wickstrom

WHEREAS, the following described tracts of land and lots are completely surrounded by land within the Municipal limits of the City of Albert Lea and

WHEREAS, the City of Albert Lea owns said tracts of land and lots and has a proprietary interest in said property and,

WHEREAS, The City Council of the City of Albert Lea does determine that it will be to the best interests of the City of Albert Lea and said property to annex the same, said property abutting upon the City of Albert Lea and containing 16.5 acres.

THE CITY OF ALBERT LEA DOES DETERMINE:

S.C. 1. The following described property, viz:

Beginning at the Southwest corner of the Southeast quarter of the Southeast quarter of Section 5, Township 102, Range 21 West; thence North a distance of 1100'; thence West to the east line of Block 13, Sheroland Heights; thence south along the east line of Block 13 to a point 16.3' Northeast of the south corner of lot 1, Block 13, Sheroland Heights; thence Northwest to a point along the South line of Block 11 and 139.89' East of the Southwest corner of lot 7, Block 11, Sheroland Heights; thence West along the South line of Block 11, Sheroland Heights to the Southeast corner of lot 7, Block 11, Sheroland Heights; thence on a curve along the West line of Jayview Park to the Northeast corner of lot 7, Block 7, Sheroland Heights; thence Southeast along the West line of Block 7, Sheroland Heights to a point 120.0' East of the Southwest corner of lot 10, Block 7; thence West to the Southwest corner of lot 9, Block 4, Sheroland Heights; thence West along the South line of Block 4 to a point 63.3' Northwest of the Southwest corner of lot 1, Block 4, Sheroland Heights; thence Northwest to the Southeast corner of lot 7, Block 1, Sheroland Heights; thence West along the South line of Block 1, Sheroland Heights to a point 170' Northwest of the South corner of lot 1, Block 1, Sheroland Heights; thence West to the center-line of Hatch Bridge; thence South and East along the existing City limits line to the point of beginning.

is hereby declared to be an addition to the City of Albert Lea as effectually as if it had been originally a part thereof, said annexation to be deemed final upon filing a copy of this ordinance with the Municipal Commission, the County Auditor and the Secretary of State.

Introduced and read first time December 28, 1959

Read second time and passed January 11, 1960

(SEAL)

Niles R. Shoff
Mayor

Filed and Attested January 12, 1960

William Aanerud
Secretary of the Council

STATE OF MINNESOTA
DEPARTMENT OF STATE
RECEIVED
FEB 26 1960
Secretary of State

STATE OF MINNESOTA
County of Freeborn
City of Albert Lea } ss.

I hereby certify that I have compared the within instrument with the original instrument now on file and find it to be a true and correct copy of the same as the same appears thereon.

Feb 19 1960
William Aanerud
City Clerk

By _____ Deputy

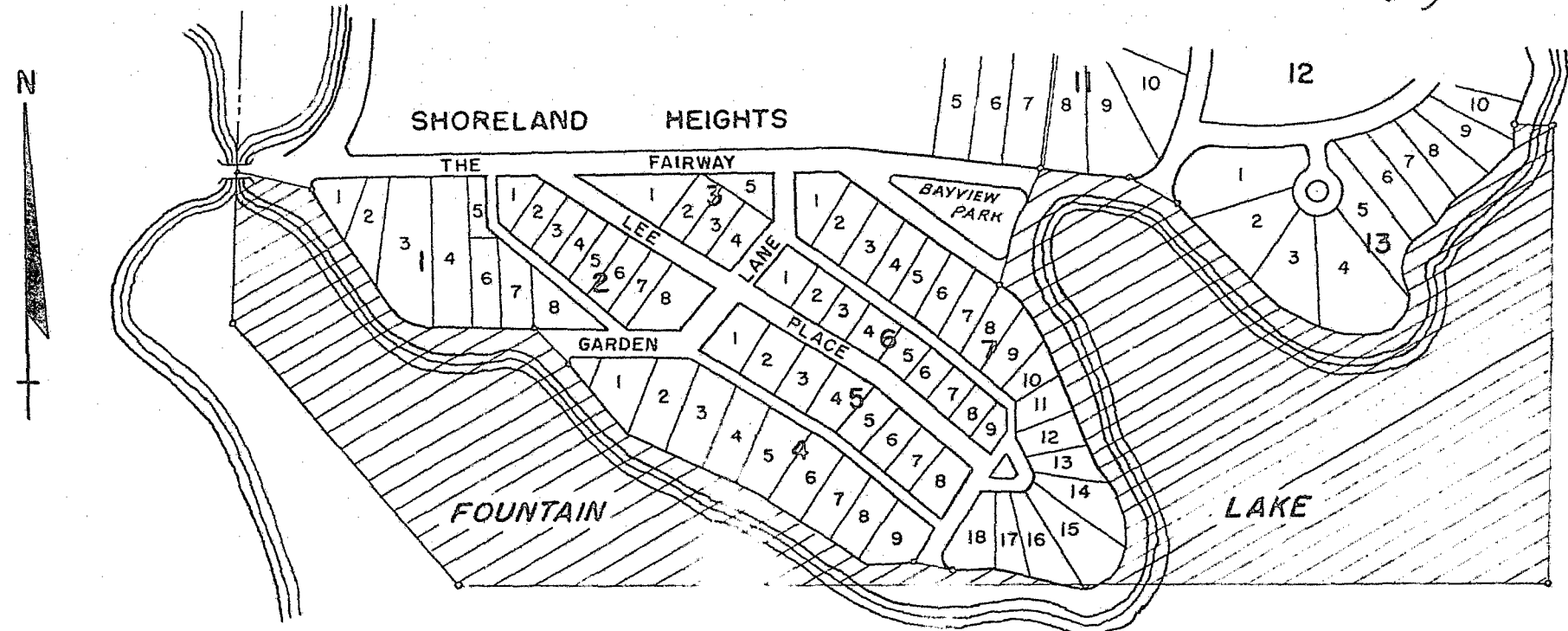
14461

O.D.

14461

OMA # 1555

1955



ANNEXATION PLAT

Beginning at the southwest corner of the Northeast quarter of the Southeast quarter of Section 5, Township 102, Range 21 West; thence North a distance of 1100'; thence West to the East line of Block 13, Shoreland Heights; thence South along the East line of Block 13 to a point 46.3' Northwest of the South corner of Lot 1, Block 13, Shoreland Heights; thence Northwest to a point along the South line of Block 11 and 127.95' East of the Southwest corner of Lot 9, Block 11, Shoreland Heights; thence West along the South line of Block 11, Shoreland Heights to the Southeast corner of Lot 7, Block 11, Shoreland Heights; thence on a curve along the East line of Bayview Park to the Northeast corner of Lot 7, Block 7, Shoreland Heights; thence Southeast along the East line of Block 7, Shoreland Heights to a point 120.8' West of the Southeast corner of Lot 18, Block 7; thence West to the Southeast corner of Lot 9, Block 4, Shoreland Heights; thence West along the South line of Block 4 to a point 83.3' Northwest of the Southwest corner of Lot 1, Block 4, Shoreland Heights; thence Northwest to the Southeast corner of Lot 7, Block 1, Shoreland Heights; thence West along the South line of Block 1, Shoreland Heights to a point 170' Northwest of the South corner of Lot 1, Block 1, Shoreland Heights; thence West to the centerline of Hatch Bridge; thence South and East along the existing City Limits line to the point of beginning.

CROSS HATCHED PORTION ANNEXED
 ORDINANCE NO. 1555 PASSED JANUARY 11, 1955