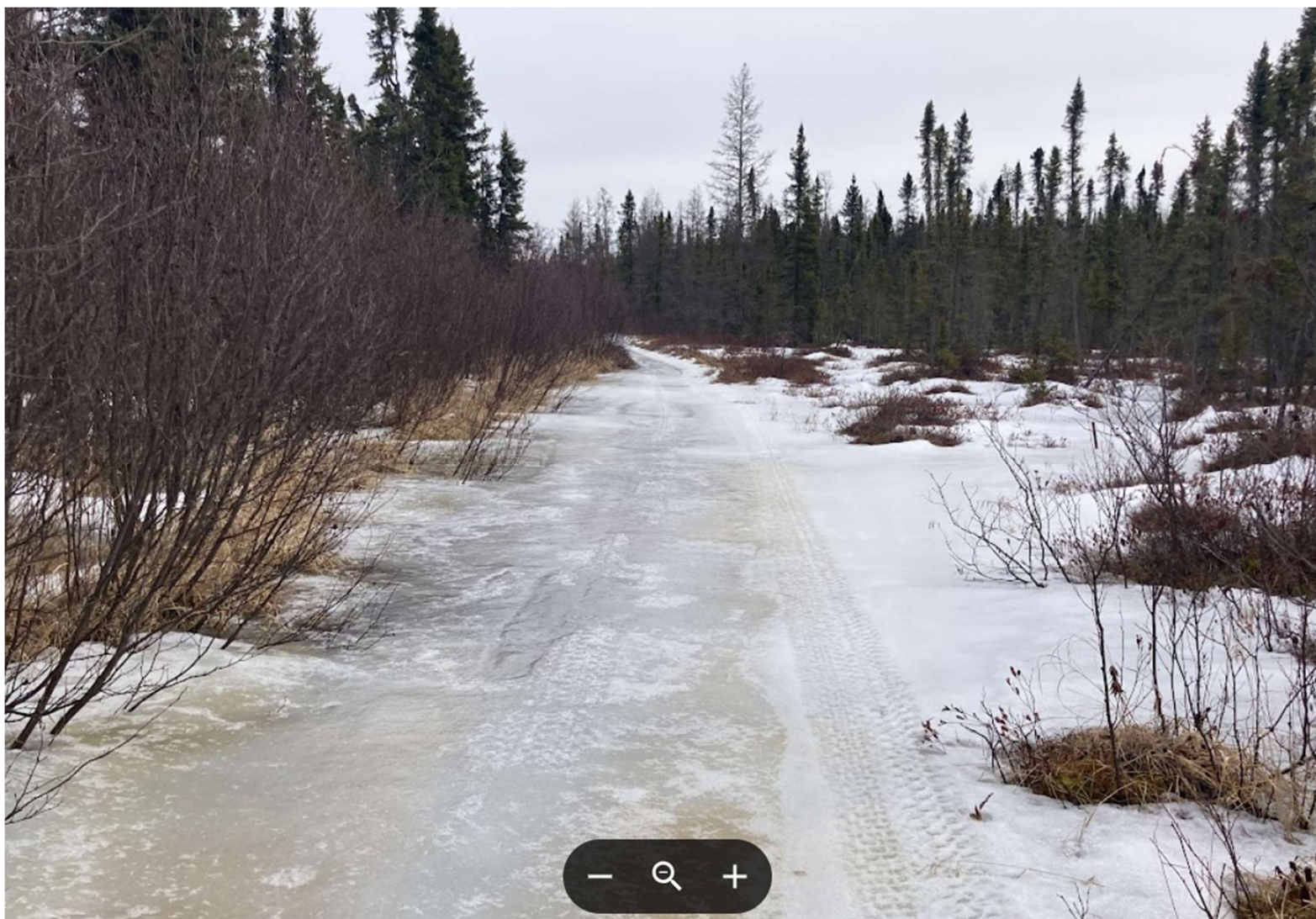


Proposed Prospector ATV Showing New Bridge Crossing Site on Range River



Proposed Prospector ATV Trail Through Spruce Bog Wetland Approaching Range River Crossing



**Proposed Prospector ATV Route on Flooded RR Grade Approaching Range River Crossing Showing
Wetland Damage by Recent ATV Use**



Proposed Prospector ATV Trail through Beaver Flowage with 200' wide Beaver dam on Old Railroad Grade



Wildlife on Range River Pond Potentially Disturbed by ATV Use of Proposed Prospector Trail



**Propose Range River ATV Bridge Crossing Site for Prospector ATV Trail –
650' Width from High Ground on West to High Ground on East Side of River**



Close-up Photo of Abandoned Logging Railroad Crossing Showing Boulder and Log Cribbing on Range River