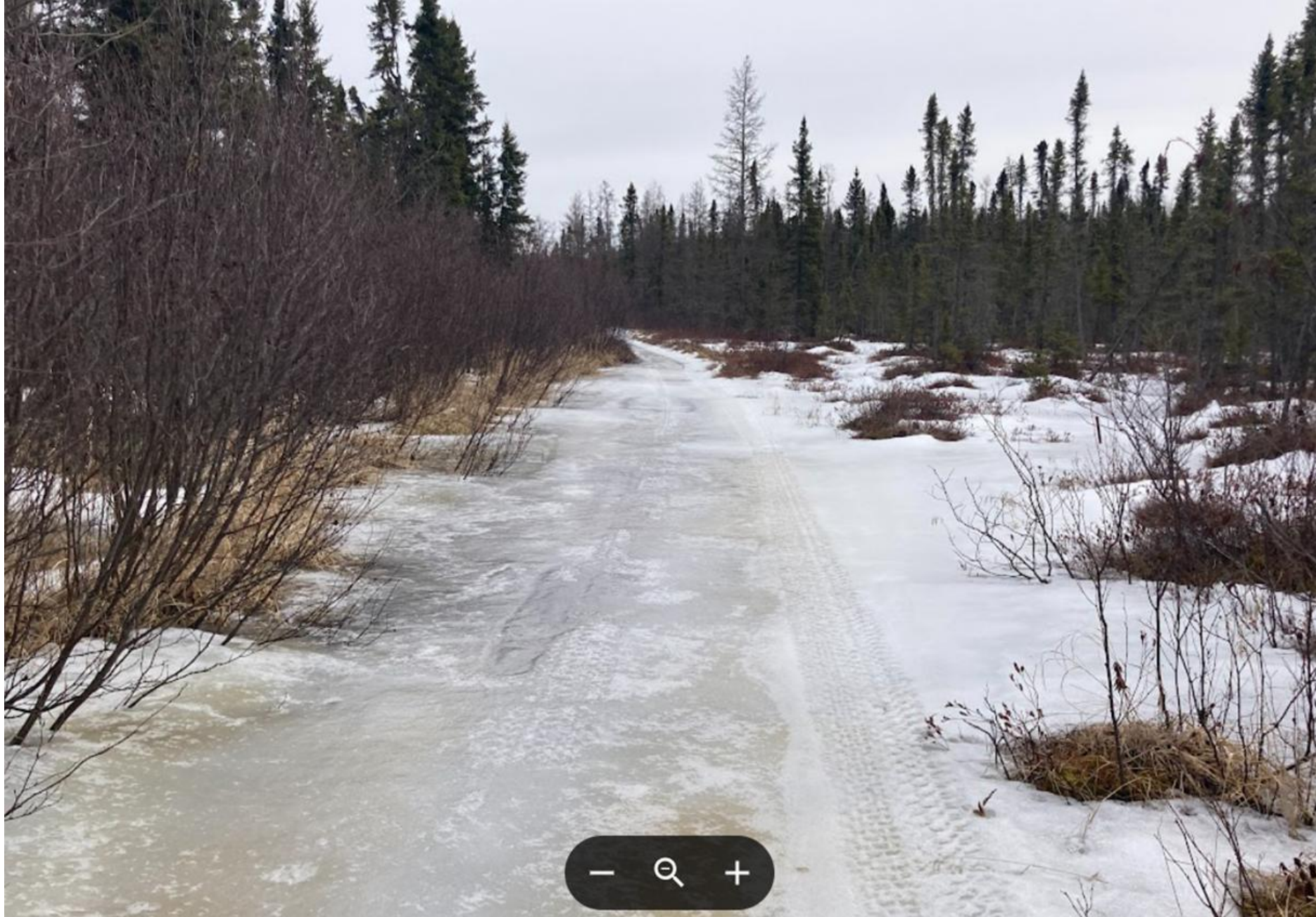


Proposed Prospector ATV Showing New Bridge Crossing Site on Range River



Proposed Prospector ATV Trail Through Spruce Bog Wetland Approaching Range River Crossing



**Proposed Prospector ATV Route on Flooded RR Grade Approaching Range River Crossing
Showing Wetland Damage by Recent ATV Use**



Proposed Prospector ATV Trail through Beaver Flowage with 200' wide Beaver dam on Old Railroad Grade



Propose Range River ATV Bridge Crossing Site for Prospector ATV Trail



Wildlife on Range River Pond Potentially Disturbed by ATV Use of Proposed Prospector Trail