



MPCA budget recommendations

Katrina Kessler, P.E. | Commissioner

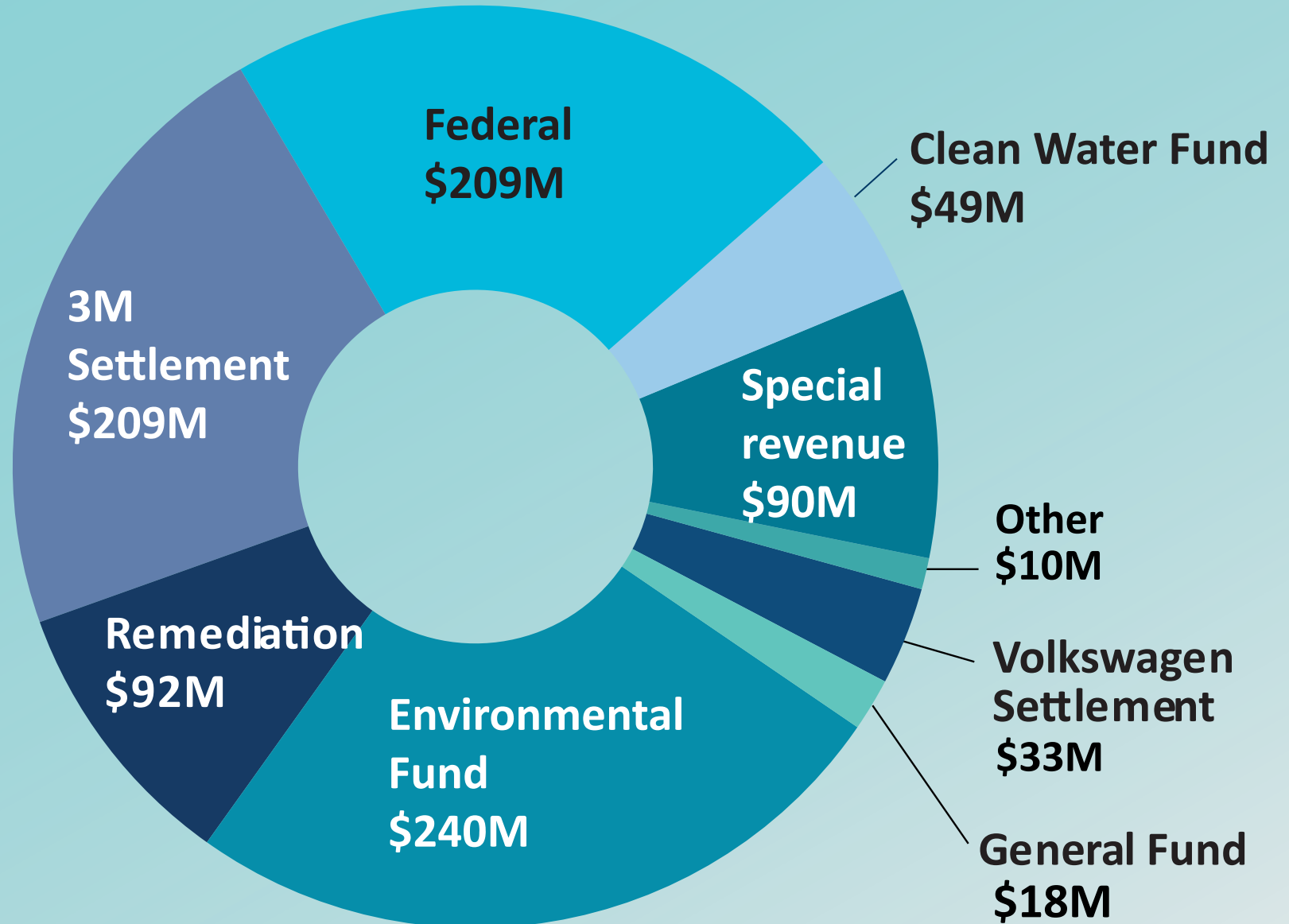
February 27, 2025



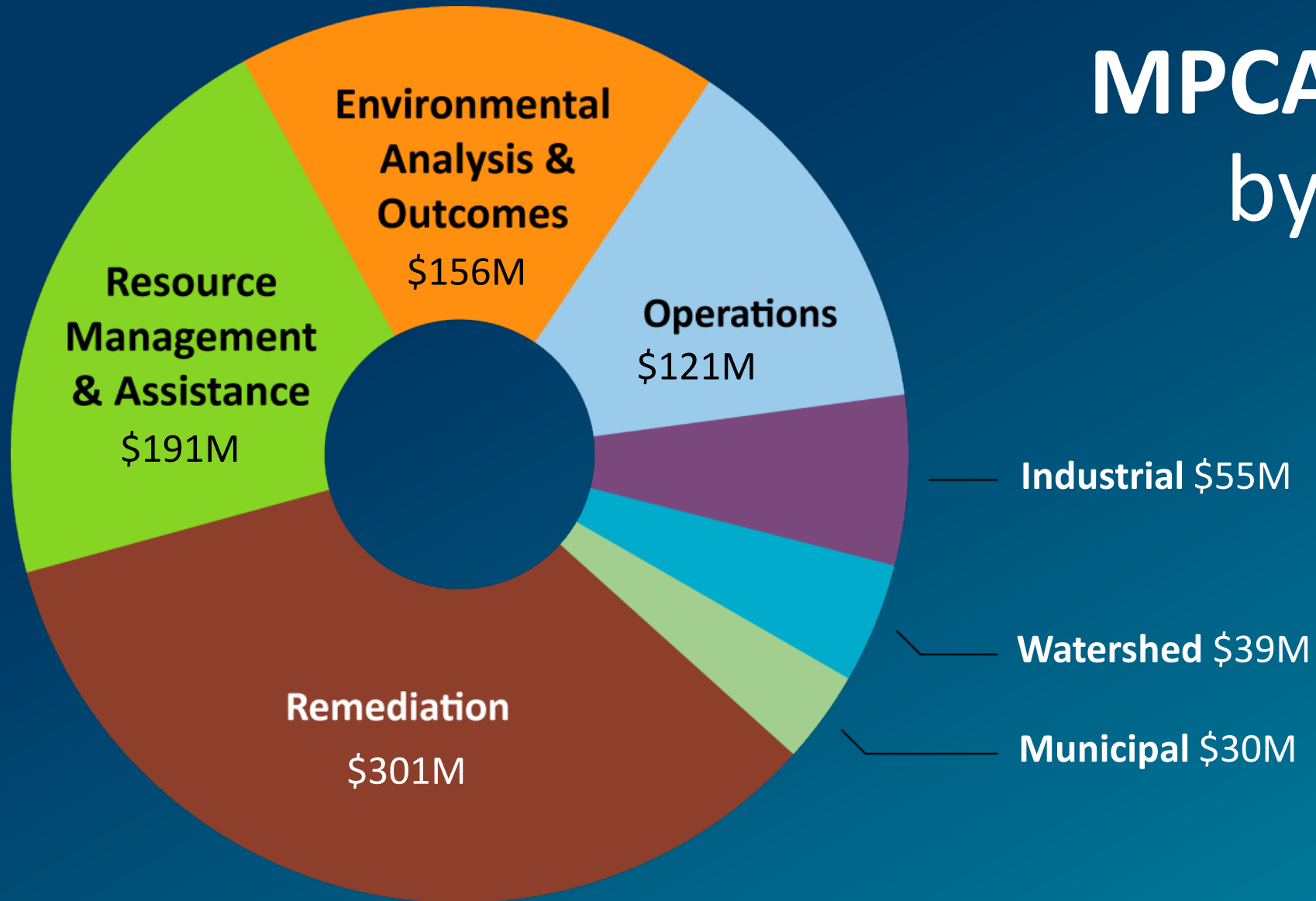
Our mission

Protect and improve the
environment and human health.

MPCA's funding sources



MPCA budget by division



Commissioner's priorities for FY 2026-27



Ensure adequate resources to perform the agency's core work

Operating increase

Air appropriation increase



Provide and fund sensible solutions that support the agency in meeting its statutory obligations

Permitting reform



Continue the momentum to achieve Minnesota's climate goals

Sustainable aviation fuel



Address critical environmental challenges on the horizon

E-waste and battery product stewardship

Maintain current service levels

- The MPCA needs adequate resources to continue to provide the services Minnesotans expect.
- Bolstering the operating budget will ensure the MPCA does not need to reduce services to communities or slow down work for regulated parties.
- Federal and state law also require states to update air emission fees regularly to cover the cost of air programs.



Operating adjustment

Funding source	FY26	FY27	FY28	FY29
General fund	\$160	\$322	\$322	\$322
Environmental fund	\$3,739	\$4,941	\$4,941	\$4,941
Remediation fund	\$740	\$894	\$894	\$894

Air appropriation increase

Funding source	FY26	FY27	FY28	FY29
Environmental Fund				
Expenditures	\$649	\$1,298	\$1,298	\$1,298
Revenues	(\$649)	(\$1,298)	(\$1,298)	(\$1,298)

Permitting reform

- Both Minnesotans and the regulated community expect and deserve timely and transparent permitting processes
- A combination of targeted investments, statutory changes, and internal efforts will help to address backlogged permits and improve permitting efficiency.



Permitting reform

Funding source	FY26	FY27	FY28	FY29
General fund	\$1,340	\$1,340	\$525	\$525
Environmental fund	\$525	\$525	\$525	\$525

- This package supports 6 FTEs to address the permitting backlog, an ombudsperson for regulated parties, a study and pilot to explore AI in permitting, and mechanisms to encourage timely and well-prepared permit applications.



Sustainable aviation fuel

- There is significant interest in transitioning the aviation industry to sustainable fuels.
- Minnesota has a time-sensitive opportunity to lead this market transition.
- A nimble and ready regulatory structure will help to incentivize the development of SAF production facilities in Minnesota.



Sustainable aviation fuel

Funding source	FY26	FY27	FY28	FY29
Environmental fund	\$700	\$700	\$700	\$700

- Three FTEs working on permitting and environmental review of this new industry, and one permitting liaison, will ensure Minnesota can support SAF production in an environmentally responsible manner.



E-waste and battery product stewardship

- The existing system for managing battery and electronic waste is costly and can be confusing for consumers.
- New battery types pose fire risks for waste and recycling facilities.
- Local governments, and ultimately taxpayers, are left paying the bill for managing this waste.



E-waste and battery product stewardship

Funding source	FY26	FY27	FY28	FY29
Revenues	(\$744)	(\$744)	(\$700)	(\$700)
Expenditures	\$744	\$744	\$700	\$700

- This revenue-neutral proposal establishes a stewardship program to cover the full cost of disposal for electronics and batteries, reducing environmental impacts and improving access to electronics recycling statewide.



Mercury skin lightening cream awareness and prevention

- Funding will expand MPCA's ability to reduce or eliminate the use of mercury-containing skin-lightening products through outreach, product purchasing, lab analysis, and local and online sales ban enforcement.

Funding source	FY26	FY27	FY28	FY29
Environmental fund	\$215	\$215	\$195	\$195



Wasted food management

- Managing wasted food decreases pressure on landfills, reduces methane emissions, and puts still-edible food to its highest use.
- Two FTEs would provide technical assistance to solid waste managers and connect food waste generators with community organizations such as food shelves.

Funding source	FY26	FY27	FY28	FY29
Environmental fund	\$350	\$350	\$350	\$350



Site assessment backlog

- As scientific understanding and detection technologies have improved, the number of sites that must be evaluated for impacts to human health and the environment has increased dramatically.
- The number of new sites entering the program far exceeds the number that can be completed in a given year.
- Funds will support four staff focused on eliminating the backlog of high-priority sites by 2029.



Funding source	FY26	FY27	FY28	FY29
Remediation fund	\$700	\$700	\$700	\$700

Cost-saving proposals

Cost recovery for spills and releases

- Close a loophole in existing law that hinders MPCA’s ability to recover cleanup costs for certain specific types of spills.

Funding source	FY26	FY27	FY28	FY29
Remediation fund	Estimated savings of \$200,000/year			



Adjustment to County Feedlot Program appropriation

- 2023 session law inadvertently provided an ongoing increase of \$1 million to this program. This corrects the appropriation to align with legislative intent.

Funding source	FY26	FY27	FY28	FY29
General fund	(\$1,000)	(\$1,000)	(\$1,000)	(\$1,000)



Clean Water Fund

Proposal	Funding source	FY 26	FY 27	FY 28	FY 29
Chloride reduction	CWF	\$650	\$650	\$0	\$0
Clean Water Council	CWF	\$461	\$461	\$0	\$0
Enhanced SSTS program support	CWF	\$3,541	\$3,541	\$0	\$0
Groundwater assessment	CWF	\$1,000	\$1,000	\$0	\$0
River and lake monitoring and assessment	CWF	\$9,450	\$9,450	\$0	\$0
Wastewater stormwater TMDL implementation	CWF	\$1,600	\$1,600	\$0	\$0
Watershed restoration and protection	CWF	\$7,250	\$7,250	\$0	\$0
National park water quality protection program	CWF	\$750	\$750	\$0	\$0

Low-cost, no-cost, and technical change items

Proposal	Funding source	FY 26	FY 27	FY 28	FY 29
Accessing federal funds for PFAS treatment	N/A	\$0	\$0	\$0	\$0
Revolving loan funds	N/A	\$0	\$0	\$0	\$0
Budget technical change item	N/A	\$0	\$0	\$0	\$0
PFAS biomonitoring in Firefighters	N/A	\$0	\$0	\$0	\$0
Closed landfill investment fund (CLIF) continuing appropriation	CLIF	<i>Based on project costs</i>			

Thank you!



Katrina Kessler, P.E.
Commissioner
Katrina.Kessler@state.mn.us