



Invest in the University of Minnesota

A catalyst for Minnesota's success

FY25 CAPITAL REQUEST

Minnesota — Poised to Achieve Even Greater Things.

Investment in key areas is essential and critical to launching the state to new heights.

CAPITAL REQUEST

Protect and extend the life of Minnesota investments in safe and modern University of Minnesota facilities

- **HEAPR (\$200 million)** – More than 100 projects in at least 75 buildings across Minnesota
- **FAARM: Future of Advanced Agricultural Research in Minnesota (\$20 million)** – Continue predesign, design, pre-construction and preliminary site preparation for the public-private partnership in Mower County

**Protect, extend
life of Minnesota
investments
through safe,
modern
University
facilities.**

CAPITAL REQUEST



**Higher Education Asset
Preservation and
Replacement (HEAPR)
statewide**

\$200 million



**Future of Advanced
Agricultural Research
in Minnesota (FAARM)
in Mower County**

\$20 million

Higher Education Asset Preservation and Replacement (HEAPR)

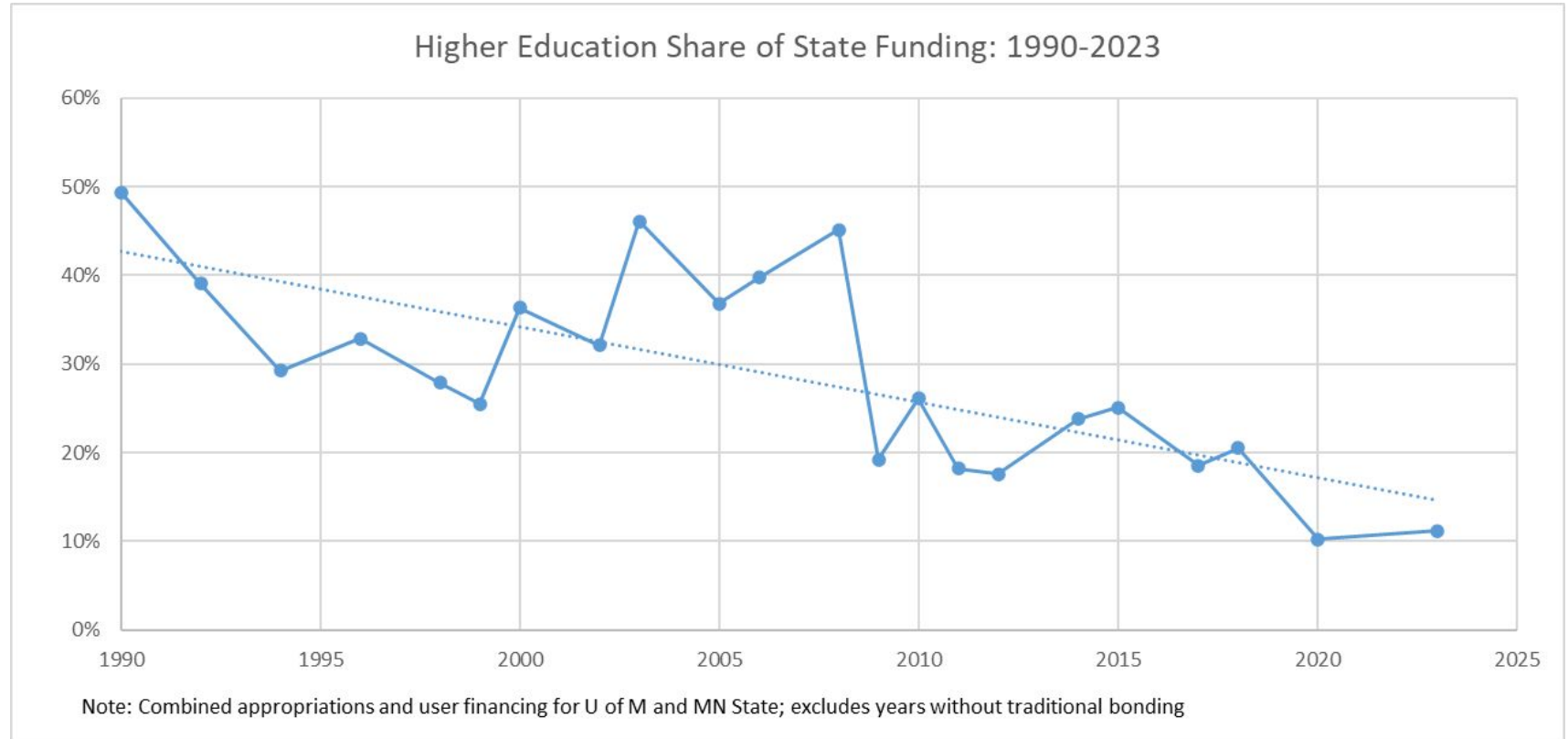


- **More than 100 projects** in at least 75 buildings across Minnesota.
- **\$15 billion facility portfolio with \$6 billion in needs, \$200 million a year would be required** just to keep the backlog from growing.
- **Lack of investment in research spaces costs Minnesota federal reimbursements** – as much as \$80-90M/year compared to peers who have invested.

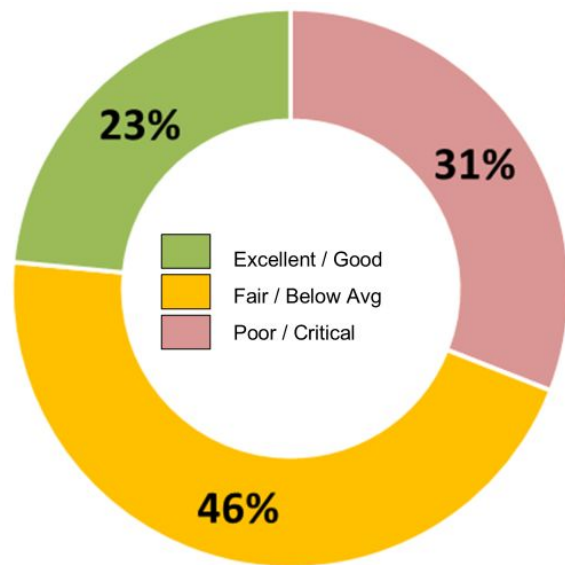
Inconsistent State funding adds to backlog

Year	HEAPR Requested	HEAPR Received	Percent (%)	
2015	\$ 55,000,000	\$ 0	0%	✗
2016	\$ 100,000,000	\$ 0	0%	✗
2017	\$ 100,000,000	\$ 20,600,000	21%	✓
2018	\$ 200,000,000	\$ 45,000,000	23%	✓
2019	\$ 200,000,000	\$ 0	0%	✗
2020	\$ 200,000,000	\$ 38,495,000	19%	✓
2021	\$ 200,000,000	\$ 0	0%	✗
2022	\$ 400,000,000	\$ 0	0%	✗
2023	\$ 200,000,000	\$ 43,350,000	22%	✓
2024	\$500,000,000	\$0	0%	✗
10-year	\$ 2,155,000,000	\$ 147,445,000	7%	

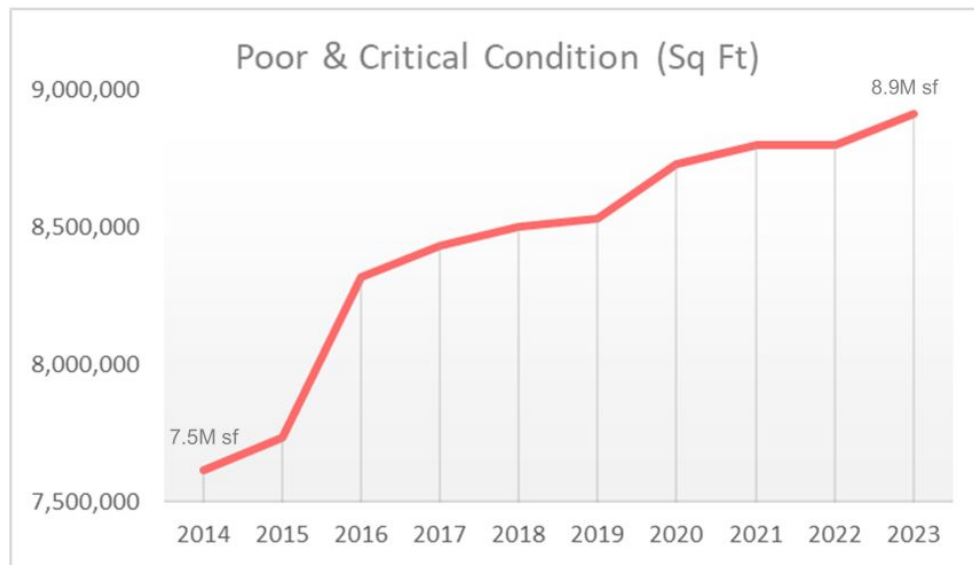
Capital Funding from the State has declined



University infrastructure has deteriorated as a result of state disinvestment



\$5.9B
10-yr needs

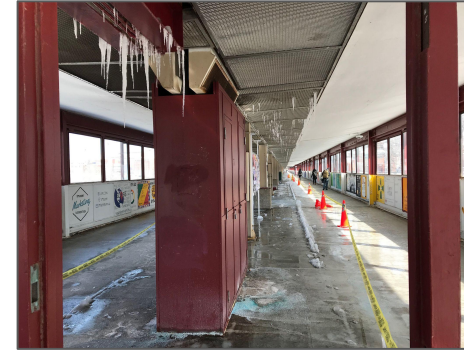


Note: all figures based on formally assessed facilities, plus actual or modeled values for non-assessed facilities less than 10 years old.

HEAPR supports Safety and Accessibility

A safe and accessible campus is fundamental for success

- Fire alarms and sprinklers
- Code related enhancements
- Access (e.g. ramps, elevators, door openers)



Top: Twin Cities - Washington Ave. Pedestrian Bridge Enclosure and Railings
Bottom: Moos Tower - Code Upgrades (left); Itasca Research Ctr. - Visitor Cabin (right)

HEAPR supports Reliability

**Unreliable buildings
disrupt learning and
research (and cost more)**

- Mechanical, electrical and plumbing systems
- Utility systems
- Roofing and windows



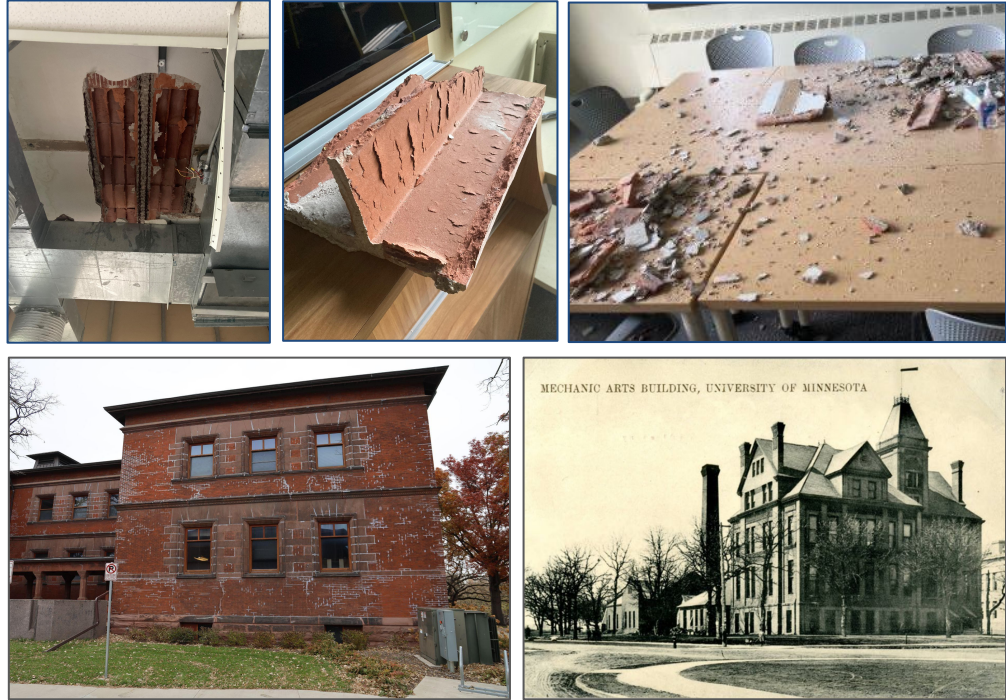
Left: Crookston Campus - ruptured natural gas pipe

Right: Crookston Heating Plant (top); Food Sci. Nutrition - Antiquated Pilot Plant Equip. (bottom)

HEAPR supports Building Stabilization

Extending the life of past investments is both responsible & economical

- Structural stabilization
- Exterior shell renewal
- Mechanical system modernization



Top: McNeal Hall ceiling failure

Bottom: Pattee Hall - exterior rehab (left); Eddy Hall - full capital renewal is needed (right)

An investment in Minnesota's future workforce

HEAPR funding:

- Improves safety and accessibility
- Supports student learning and success
- Enables the University to increase key programs' enrollment to meet Minnesota's workforce needs



Future of Advanced Agricultural Research in Minnesota (FAARM)



- A public-private partnership located in Mower County.
- Continue predesign, design, preconstruction, preliminary site preparation.

State Capital Appropriations Report

Progress Update

- 100% of the 2020 appropriations have been spent or encumbered
- 85% of the 2023 appropriations have been spent, encumbered, or otherwise obligated to specified projects

Benefits to the State (last 5 years)

- 90% of project expenditures have gone back into MN companies
- Supported >250 vendors, in more than 80 cities and 20 counties



Fraser Chemistry Teaching Labs: funded with 2023 State bonding and U of M resources, will open for classes in the Fall of 2025.



UNIVERSITY OF MINNESOTA

Driven to Discover®

Crookston Duluth Morris Rochester Twin Cities

The University of Minnesota System, with campuses in Crookston, Duluth, Morris, Rochester, and the Twin Cities, is driven by a singular vision of excellence. We are proud of our land-grant mission of world-class education, groundbreaking research, and community-engaged outreach, and we are unified in our drive to serve Minnesota.

govrelations.umn.edu | [@UMNGovRelations](https://twitter.com/UMNGovRelations) | govrelations@umn.edu