

Federal Nutrition Programs and Their Impact on MN's Hunger Relief Network

February 17, 2025



Minnesota's five Feeding America food banks and our partners at New Hope-based The Food Group collectively serve every county and community in the state.



THE PATH TO HUNGER RELIEF



GROWERS,
PRODUCERS &
MANUFACTURERS



FOOD BANKS



FOOD SHELVES
& HUNGER-RELIEF
ORGANIZATIONS



OUR NEIGHBORS'
TABLE

FOOD BANKS RELY ON FEDERAL NUTRITION PROGRAMS TO HELP SOURCE AND DISTRIBUTE FOOD THROUGHOUT MN

The Emergency Food Assistance Program (TEFAP):

Through TEFAP, the USDA purchases nutritious food from U.S. growers and producers, and food banks then partner with states to distribute these foods to eligible individuals and families.

The Commodity Supplemental Food Program (CSFP):

The CSFP program provides monthly food assistance via pre-packed, shelf-stable nutrition boxes specially targeted to low-income seniors.

The Local Food Purchase Assistance (LFPA):

LFPA operates through non-competitive cooperative agreements to provide funding for state, tribal and territorial governments to purchase foods produced within the state or within 400 miles of the delivery destination.

USDA freezes farmer funding for some programs, conservation contracts

By P.J. Huffstutter and Leah Douglas

February 8, 2025 5:00 AM CST · Updated 6 days ago



Mass firings strike USDA across agencies, including field staff

02/14/25 4:15 PM By Philip Brasher, Noah Wicks, Steve Davies, and Lydia Johnson

Pioneer Press, St. Paul, Minn.

Frozen funding, federal uncertainty leave St. Paul nonprofits reeling

Frederick Melo, Pioneer Press

Wed, February 12, 2025 at 10:28 AM CST · 7 min read





LFPA Funding Freeze:

- Channel one was awarded \$125,000. We had budgeted to spend \$48,0000 on food grown by local producers, leaving a \$77,000 balance.
- We stopped buying chicken immediately; we're owed \$10,000 we don't know if we receive.

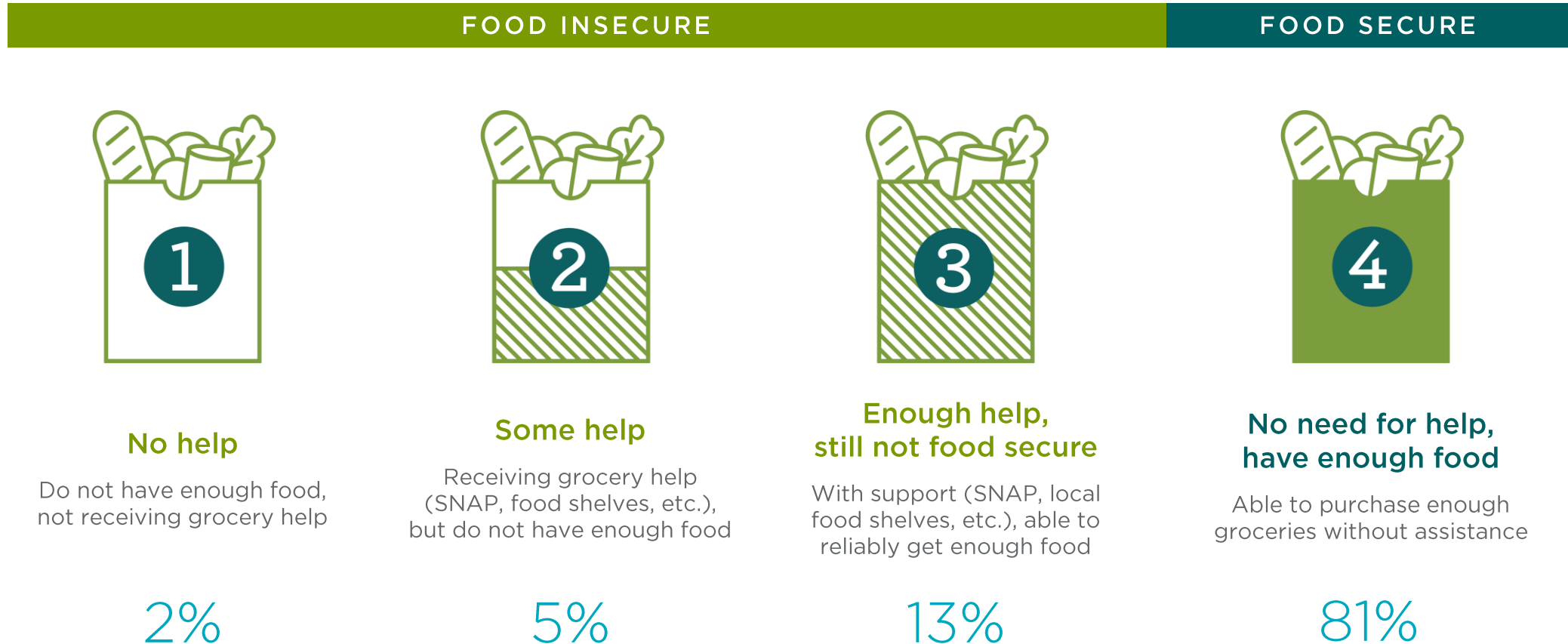
Impact of Potential Changes to Commodity Credit Corporation Funding:

- In Calendar Year 2024, 38% of Channel One's received TEFAP food was CCC
- In Calendar Year 2024, 58% of Channel One's received TEFAP meat/fish/poultry was CCC
- Pounds of CCC donations in 2024 = 828,209 (a \$1,988,755 value)
- During CY 2024, the CCC food was 5% of all food received at Channel One
- A 5% reduction in nutritious food is significant when donations have lessened and need has increased dramatically.

1 in 5 Minnesota
households

ARE FOOD INSECURE

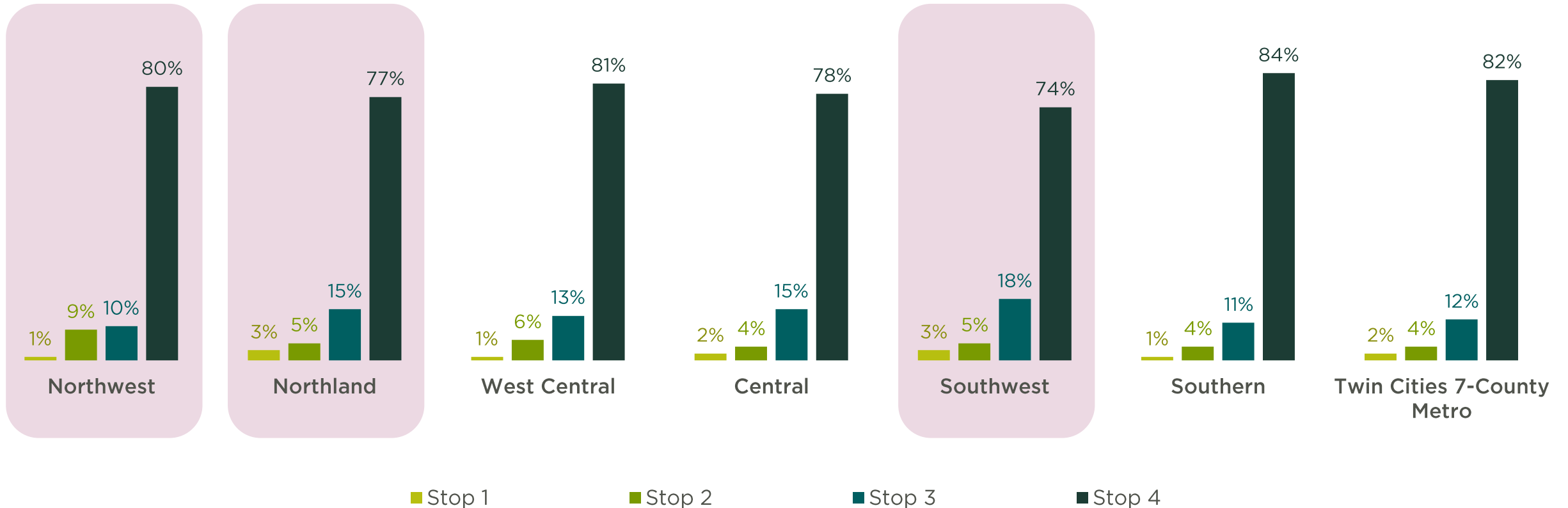
THE HUNGER CONTINUUM



Totals reflect rounding.

HUNGER AND FOOD INSECURITY RATES VARY SLIGHTLY BY GEOGRAPHIC REGION

Distribution of Each Region Along the Hunger Continuum



Thank you!

