

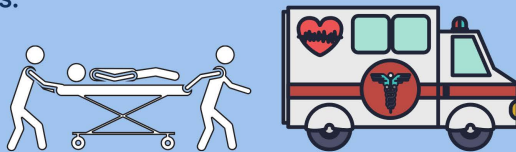
SUPPORT THE EMERGENCY AMBULANCE AID BILL

HF3992
SF3886

THE PROBLEM

Emergency Medical Services (EMS) in Minnesota continue to face **critical** challenges to delivering services across the state. **Severe** reimbursement shortfalls, aging workforces, **unsustainable** staffing models, and **increased operating costs** are forcing communities to make tough decisions. This **crisis** will have **life-threatening** consequences for families and their communities.

The legislature must take action **NOW**.



THE ASK

The fee-for-service model of funding EMS is failing. Right now, services and personnel are struggling to maintain operations. We support the passage of an immediate \$120 million emergency ambulance service aid appropriation (SF3886/HF3992) that will keep services operating in the near term.

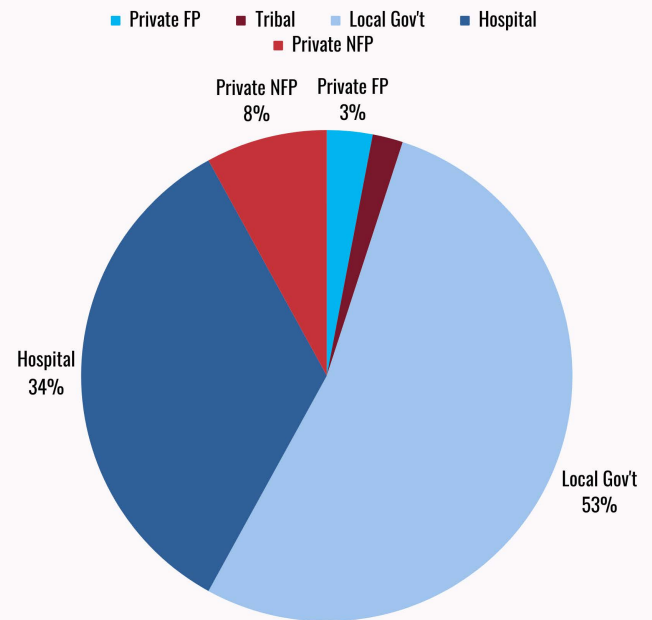


THE COMMITMENT

We commit to working to find a sustainable revenue source to be considered by the legislature in 2025 that will ensure communities across the state have access to quality EMS. Long-term funding, coupled with improvements to the service model, will support EMS providers in their mission to provide essential, lifesaving care to all Minnesotans.



OWNERSHIP OF AMBULANCE LICENSES



2022 statewide reported operations deficit for Ground Ambulance Service Costs was



\$122 MILLION!

Without emergency funding followed by a longer-term viable financial solution, these ambulance services are simply

NOT SUSTAINABLE.



IT IS TIME TO PRIORITIZE EMS DELIVERY FOR OUR COMMUNITIES.

For more information, contact Erik Simonson: 651-259-1921 easimonson@flaherty-hood.com

WHO WE ARE



A partnership of 37 organizations from across Minnesota coming together to advocate for EMS delivery & sustainability.



 Allina Health www.allinahealth.org	 American College of Emergency Physicians, MN Chapter www.mnacep.org	 Arrowhead EMS Association www.arrowheadems.com
 Association of Minnesota Counties www.mncounties.org	 Aster Health EMS www.asterahealth.org	 Bemidji Ambulance Service www.bemidjiambulance.com
 Browerville Ambulance Service www.browerville.govoffice.com	 Cloquet Area Fire District www.cloquetareafiredistrict.com	 CentraCare www.centracare.com
 Coalition of Greater Minnesota Cities www.greatermncities.org	 Cromwell-Wright Area Fire District www.cromwellwrightfire.us	 Essentia Health www.essentiahealth.org
 Hennepin County Association of Paramedics & EMTs www.hcape.org	 Hennepin EMS www.hennepinems.org	 Hibbing Fire Department www.hibbingmn.gov/162/Fire-Department
 International Falls Fire & Rescue www.ci.international-falls.mn.us	 League of Minnesota Cities www.lmc.org	 M Health Fairview EMS www.mhealthfairview.org/ems
 Mayo Clinic Ambulance Service www.mayoclinic.org	 Minnesota Association of Townships www.mntownships.org	 Minnesota Ambulance Association www.mnems.org
 Minnesota Association of Small Cities www.maosc.org	 MEDS-1 Ambulance Service www.meds-1.com	 Minnesota Rural Health Association www.mnruralhealth.org
 Minnesota State Fire Chiefs Association www.msfc.org	 City of Nashauk www.nashwuakmn.gov	 National Association of EMS Physicians, MN Chapter www.naemsp.org
 North Memorial Health www.northmemorial.com	 Northfield Hospitals & Clinics www.northfieldhospital.org	 Perham Area EMS www.perhamems.org
 Range Association of Municipalities & Schools www.ramsmn.org	 Ringdahl EMS www.ringdahlems.com	 Sanford Health www.sanfordhealth.org
 Southeastern Minnesota League of Municipalities www.semmlm.org	 Southwest EMS www.sw-ems.org	 Stevens County Ambulance Service www.stevensems.com
 Virginia Fire Department www.virginiafd.com		

