



# HumanFIRST

## Speed Cameras to Combat Deadly Speeding in Minnesota

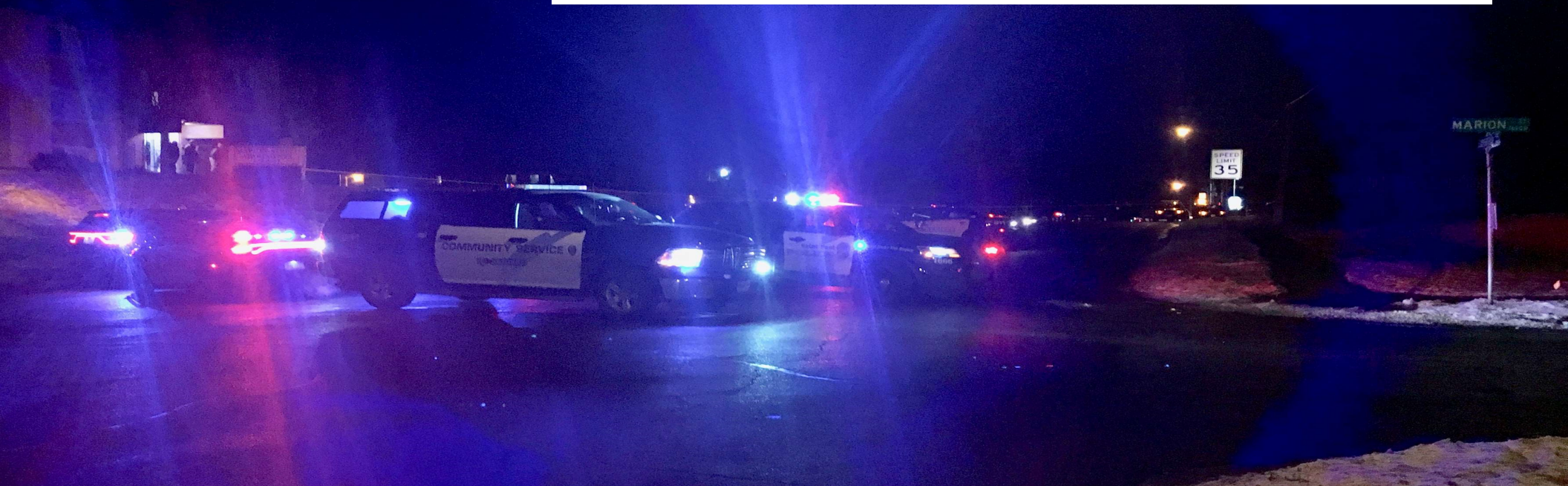
Nichole L. Morris, Ph.D.  
Research Associate Professor  
Director, HumanFIRST Laboratory  
Department of Mechanical Engineering

From 2013-2022, **nearly 4,000**  
people lost their lives on  
Minnesota roadways



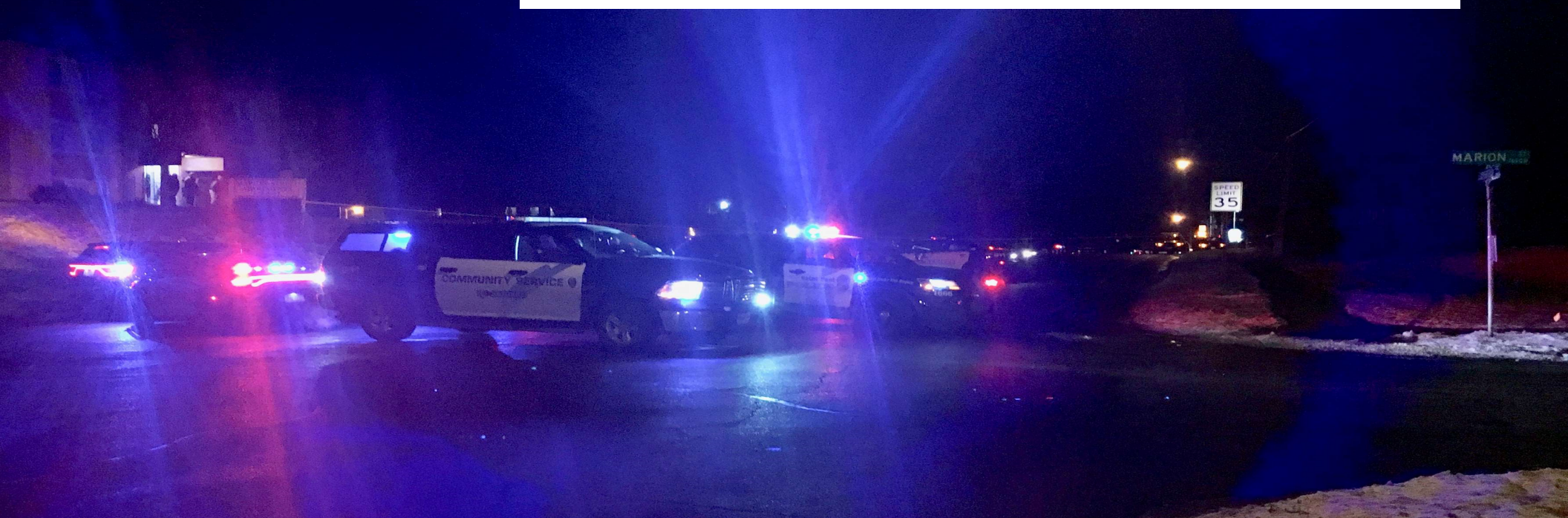


Prior to 2020,  
speeding tended to account for  
~24% of fatal crashes in Minnesota





However, speeding behavior has  
significantly worsened since  
COVID





Speeding behaviors have significantly increased in Minnesota in recent years

- MN Fatalities involving speeding
  - 2019: 77
  - 2020: 112
  - **2021: 162**
  - **2022: 130**
- MN State Patrol citations for 100+ mph
  - 2019: 533
  - 2020: 1,080
  - **2021: 1,249**
  - **2022: 1,150**

# Speed Cameras Will Save Lives

- Speed cameras reduce speed-related crashes
  - 20+ years of research have consistently found that speed cameras reduce crashes by ~20%-25%
- Speed cameras can reduce the resource demands of speed enforcement on Minnesota law enforcement

# Speed cameras can be deployed in a way that Minnesotans support

- UMN has conducted multiple studies on various aspects of speed cameras
  - Surveyed Minnesotans overwhelmingly agree that speeding is a problem
    - *Morris, 2021*
  - Past UMN study found broad public support among Minnesotans for speed cameras in school zones and work zones
    - *Douma, Munnich, & Garry, 2014*
  - Those opposed to speed cameras have been found to shift to more favorable opinions when presented with the safety benefits of speed cameras
    - *Peterson, Douma, & Morris, 2017*
  - Driver distraction was found to *decrease* among drivers in simulated work zones monitored by speed cameras and “Your Speed” signs
    - *Morris, Cooper, Ton, Plummer, & Easterlund, 2016*



# ***WHAT'S AT STAKE WITHOUT ACTION?***

- Over next decade, Minnesota's fatal crash trends put us on track to lose 4,000 lives on our roadways
  - Projected economic losses conservatively estimated at **\$6.8 billion**
  - Emotional toll on Minnesota families is immeasurable
- Slowing unsafe speeding helps keep Minnesota families together