

Inflow and infiltration grant program

Protecting health, homes, and environment

Governor Walz recommends **\$5 million** in state general obligation bonds for grants for cities to repair sewer pipes that connect to the regional wastewater system. This grant program has traditionally covered up to 50% of the inflow and infiltration repairs of a project's cost.

BENEFITING COMMUNITIES

Protecting public and environmental health by preventing sewer overflows to basements and waterways.

Allowing our economy to grow and prosper without the cost of building larger infrastructure.

Saving money by reducing the amount of water that needs to be transported and treated.

INVESTING IN INFLOW AND INFILTRATION REPAIRS

Since 2004, the Met Council's inflow and infiltration program has benefited from local, regional, and state investments to reduce clear water's impact on the system. Many of those dollars have gone to improve pipes maintained by a city or township, or to the regional sewer interceptor system.

- Deferred an estimated \$1 billion in capacity improvements.
- Allows the existing system to serve the growing region — estimated 11% population growth within the region between 2010 and 2020.
- Helps keep the Met Council's wastewater rates competitive — about 35% below the national average of peer agencies..

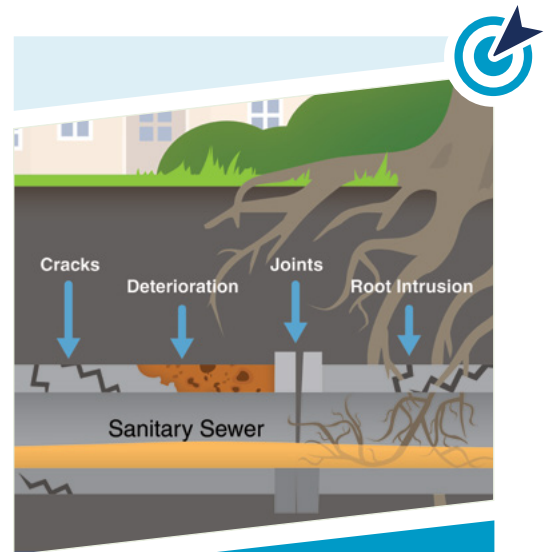
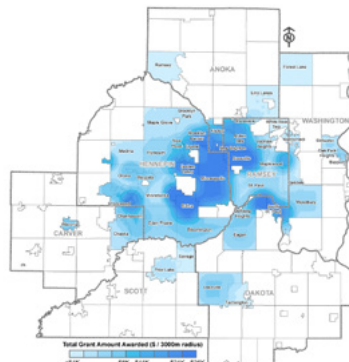
GRANTS INVESTED ACROSS THE REGION

State bonding grant allocations

2010-2020

\$24.25 MILLION

The Met Council will allocate an additional \$12 million in state bonds from the 2023 legislative session.



KEEPING CLEAR WATER OUT OF WASTEWATER

When pipes in the local wastewater collection system experience the cracks and deterioration that come with age, or when roots break through the pipes, that allows stormwater and groundwater into the system. That water is called inflow and infiltration. When it overloads the system, it can cause costly sewer backups into homes and buildings, or sewer overflows into rivers and lakes.

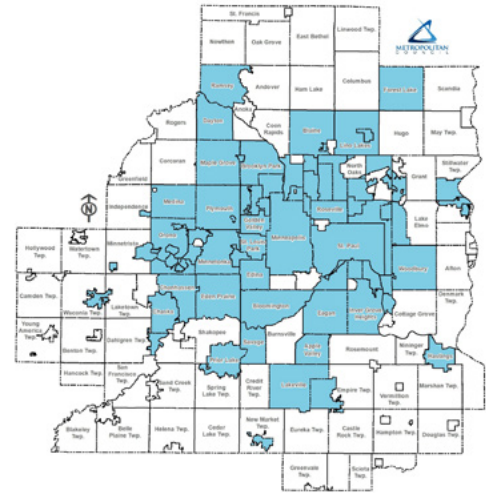
COMMUNITIES IMPACTED BY INFLOW AND INFILTRATION

Apple Valley	Hopkins	Oakdale
Arden Hills	Inver Grove Heights	Orono
Bayport	Lakeville	Osseo
Birchwood	Lauderdale	Plymouth
Blaine	Lexington	Prior Lake
Bloomington	Lilydale	Ramsey
Brooklyn Center	Lino Lakes	Robbinsdale
Brooklyn Park	Little Canada	Roseville
Carver	Long Lake	Savage
Centerville	Mahtomedi	Shoreview
Chanhassen	Maple Grove	Shorewood
Chaska	Maple Plain	South St. Paul
Columbia Heights	Maplewood	Spring Park
Crystal	Medicine Lake	St. Anthony
Dayton	Medina	St. Bonifacius
Deephaven	Mendota	St. Louis Park
Eagan	Mendota Heights	St. Paul
Eden Prairie	Minneapolis	St. Paul Park
Edina	Minnetonka	Stillwater
Elko-New Market	Minnetonka Beach	Spring Park
Excelsior	Mound	Tonka Bay
Farmington	Mounds View	Vadnais Heights
Forest Lake	New Brighton	Waconia
Fridley	New Hope	Wayzata
Golden Valley	Newport	West St. Paul
Greenwood	North St. Paul	White Bear Township
Hastings	Oak Park Heights	Woodbury

For more information on inflow and infiltration

Visit metro council.org/Wastewater-Water/Planning/Wastewater/Inflow-and-Infiltration.aspx

Contact Kyle Colvin at kyle.colvin@metc.state.mn.us



Dye Test Lateral

Our wastewater
rates are **35%**

Below the
national average