

Metropolitan Council

2024 Governor Walz Capital Budget Recommendations
Senate Transportation Committee – February 26, 2024



Metropolitan Council



Governor Walz recommends:

- \$37 million for busway capital improvement program
- \$5 million for inflow and infiltration grant program
- \$2.5 million for the regional parks and trails bonding program

Busway Capital Improvement Program



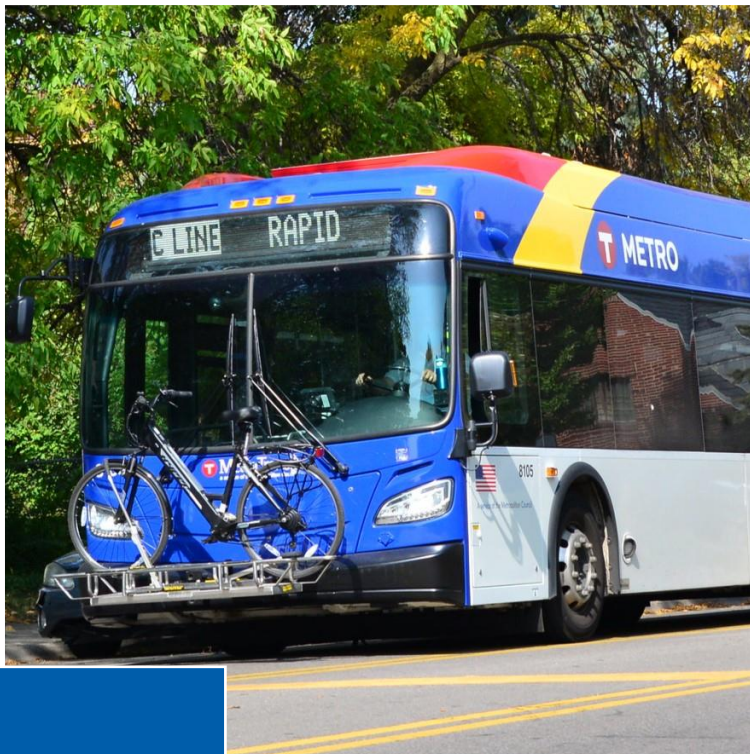
Busway Capital Improvement Program

Bus Rapid Transit

- Serves the highest ridership corridors best when there is:
 - Faster, frequent, and more reliable service
 - Enhanced stations
 - An easy-to-use network serving all-day, all-purpose trips



Bus Rapid Transit Provides



Improved
Service



Enhanced
Facilities



Attractive,
reliable,
efficient
service

Busway Capital Improvement Program



\$37 million

H Line (Como / Maryland from Minneapolis to Sun Ray)

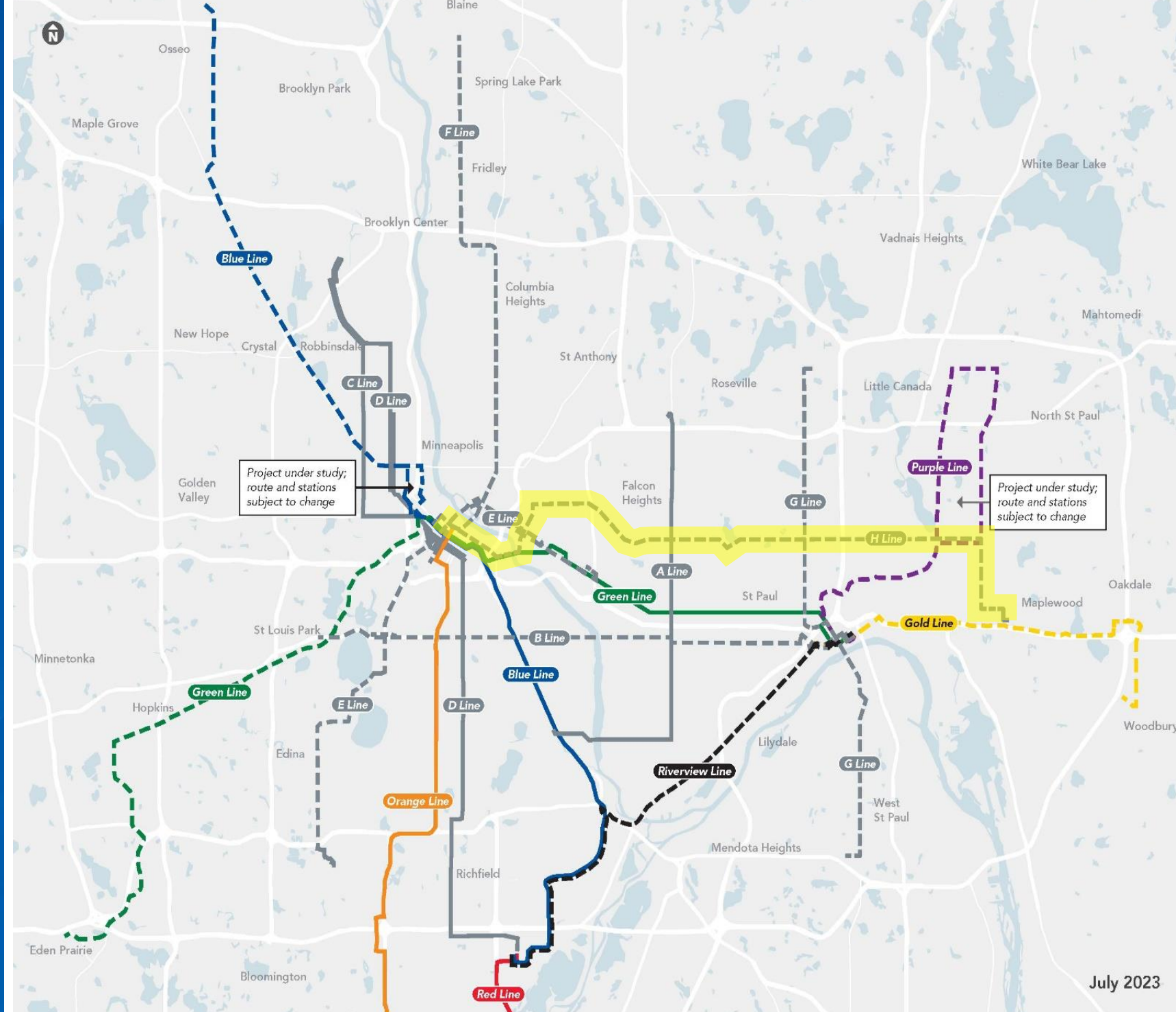
- Expands network of fast, frequent, all-day transitway service
- Potential to leverage up to \$150 million in federal funding, including up to \$75 million in Small Starts
- For environmental work, right-of-way acquisition, design, construction, and other potential bond-eligible uses

Remaining funds would advance J, K, L lines to be prioritized through 2025 plan update, incorporating current data and community engagement



H Line Route

(Como / Maryland from Minneapolis to Sun Ray)



Current METRO network

- A Line
- C Line
- D Line
- Blue Line
- Green Line
- Orange Line
- Red Line

Planned METRO network

- Planned BRT
- Gold Line
- Purple Line
- Project under study; route and stations subject to change.
- Riverview Line
- Green Line Extension
- Blue Line Extension
- Project under study; route and stations subject to change.



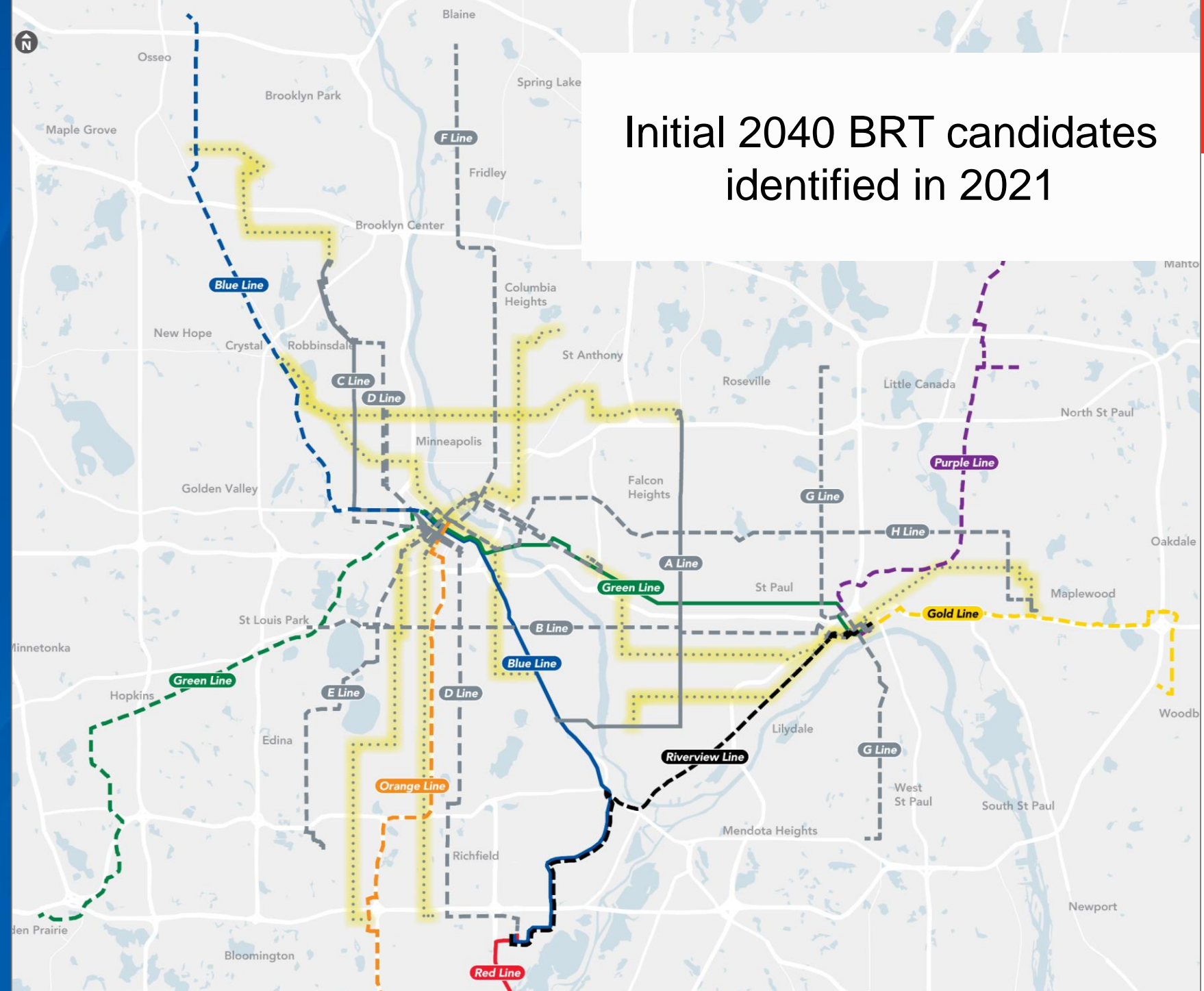
2025 BRT plan update

Identify J, K, L lines

Revisit candidates first identified in 2021

Consider others based on data and engagement

Initial 2040 BRT candidates identified in 2021



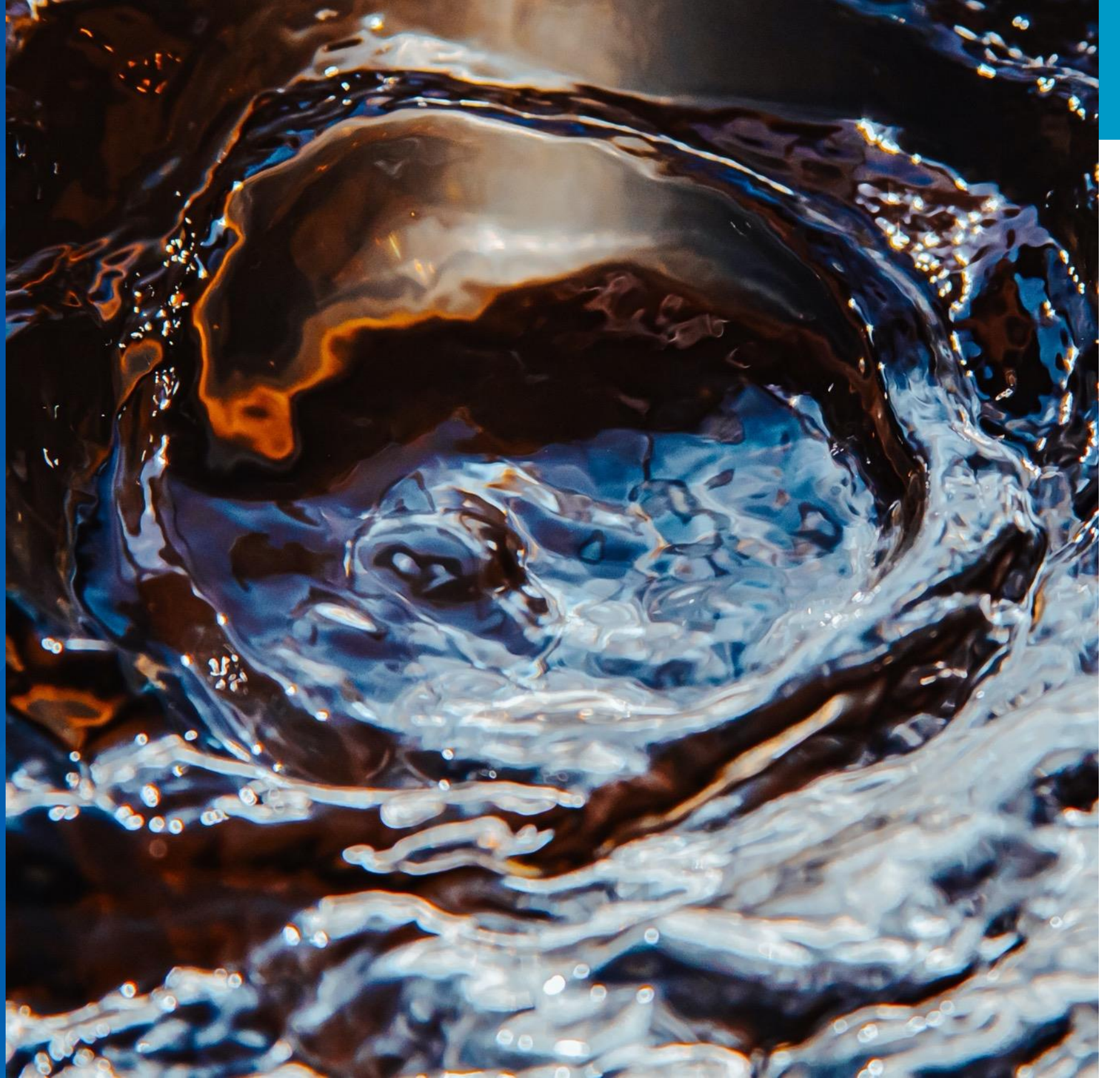
Current METRO network

A Line	Green Line
C Line	Red Line
Blue Line	

Planned METRO network

Planned BRT	Orange Line	Green Line Extension
Additional candidates for BRT between 2030 and 2040	Gold Line	Blue Line Extension
	Purple Line	Riverview Line

Inflow and Infiltration Grant Program



Sustainability: Water



Build a resilient region that mitigates its adverse contribution to climate change, with a focus on water quality, and meets the challenge of the climate crisis.

Wastewater System

WHO WE SERVE

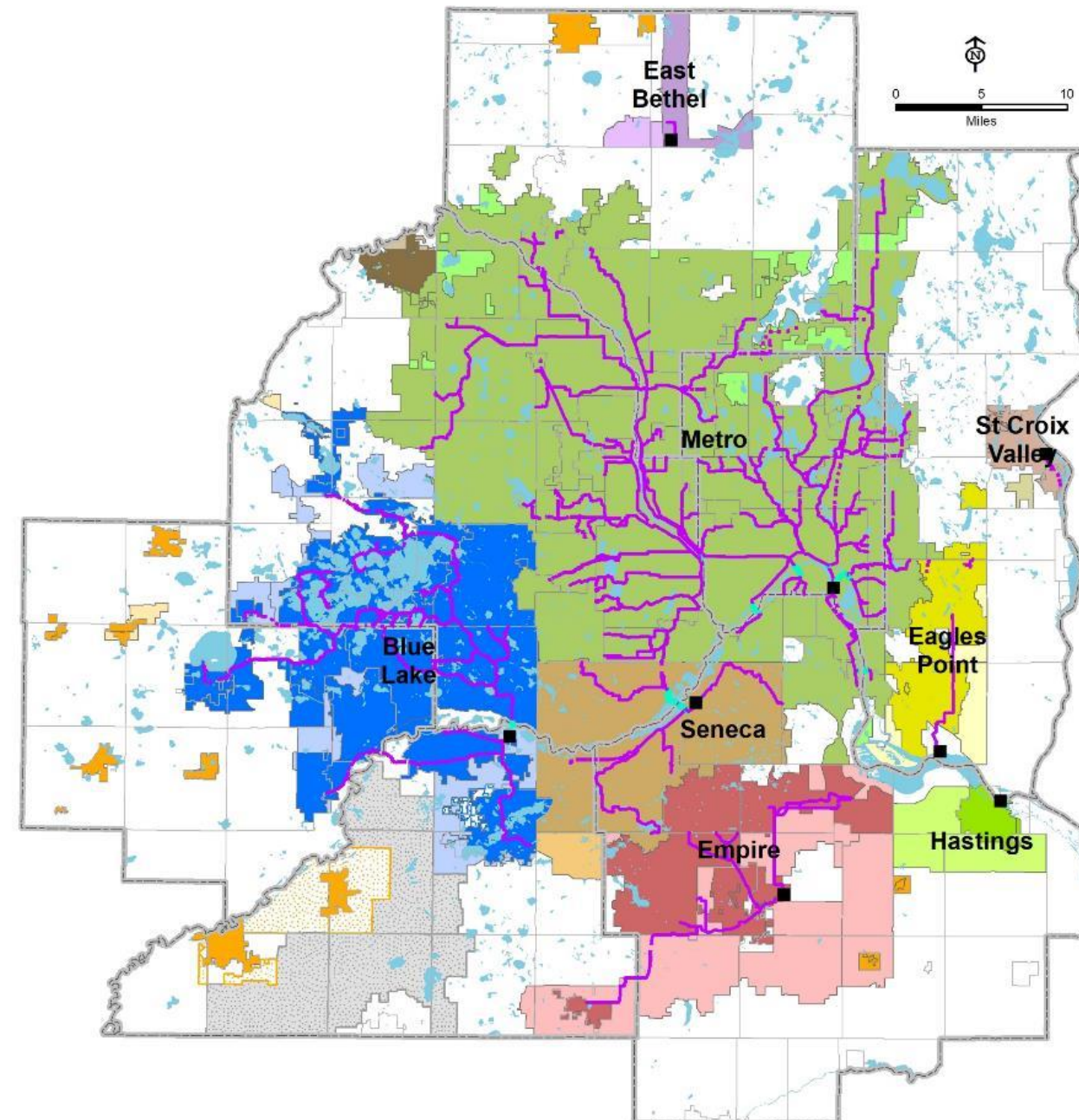
- 7-county Metro Area
- 111 communities
- 2,800,000+ people

OUR FACILITIES

- 9 wastewater treatment plants
- 610 miles of interceptors
- 250 million gallons per day (avg.)

OUR ORGANIZATION

- 600+ employees
- \$7 billion in valued assets
- \$150 million / year capital program



Wastewater System

Metropolitan Council

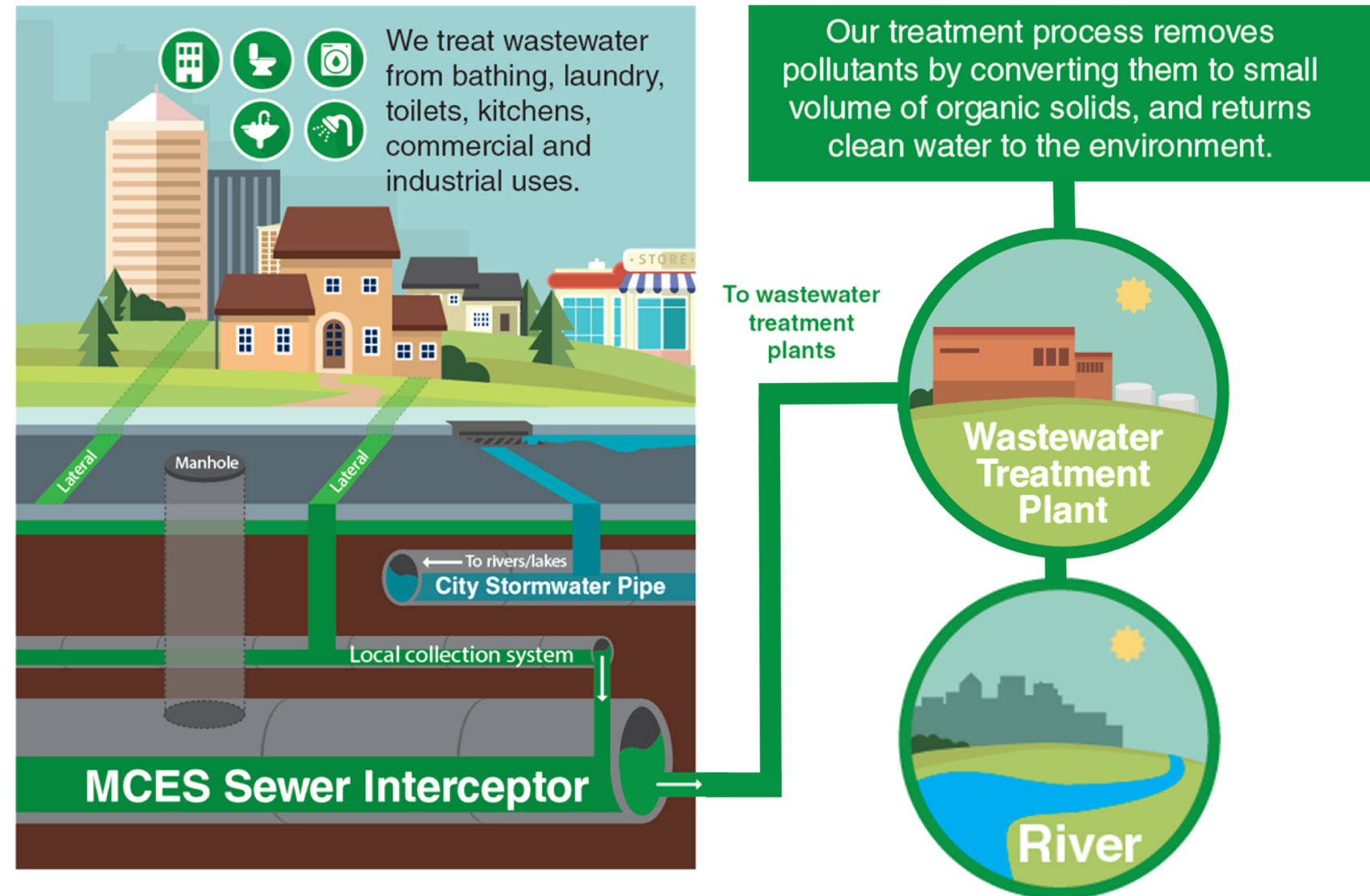
- Regional infrastructure

Cities and townships

- Connect from the street to regional infrastructure

Property owners

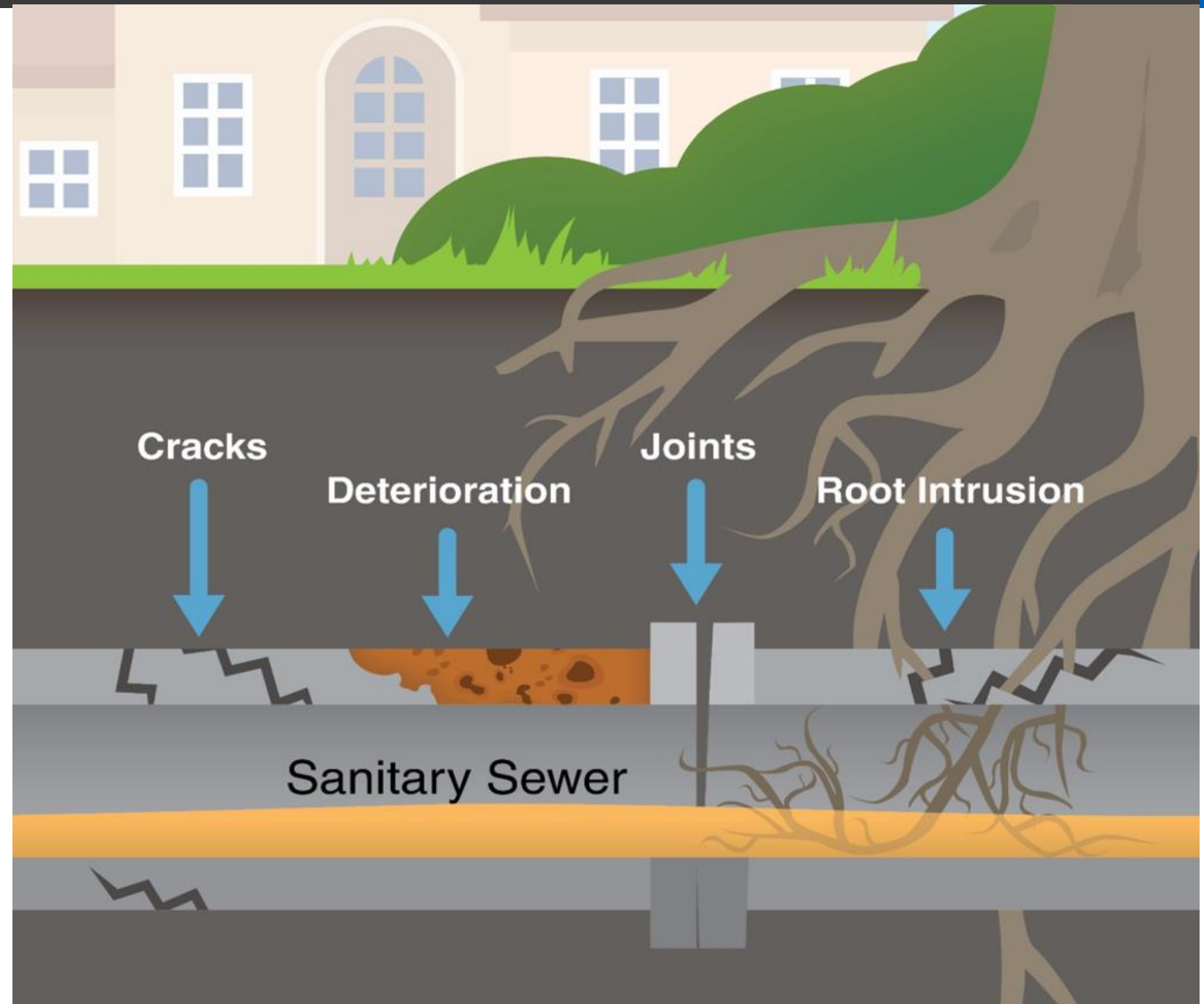
- Connect from the property to the street



Inflow and Infiltration

The cost of clear water in the wastewater system

- Unnecessarily treats clear water along with wastewater
- Causes sewer backups into homes
- Causes sewer overflows into rivers and lakes
- Increases sewers and utility fees
- Increases the need for larger and more expensive sewer pipes and treatment facilities



Repair pipes that connect to regional infrastructure

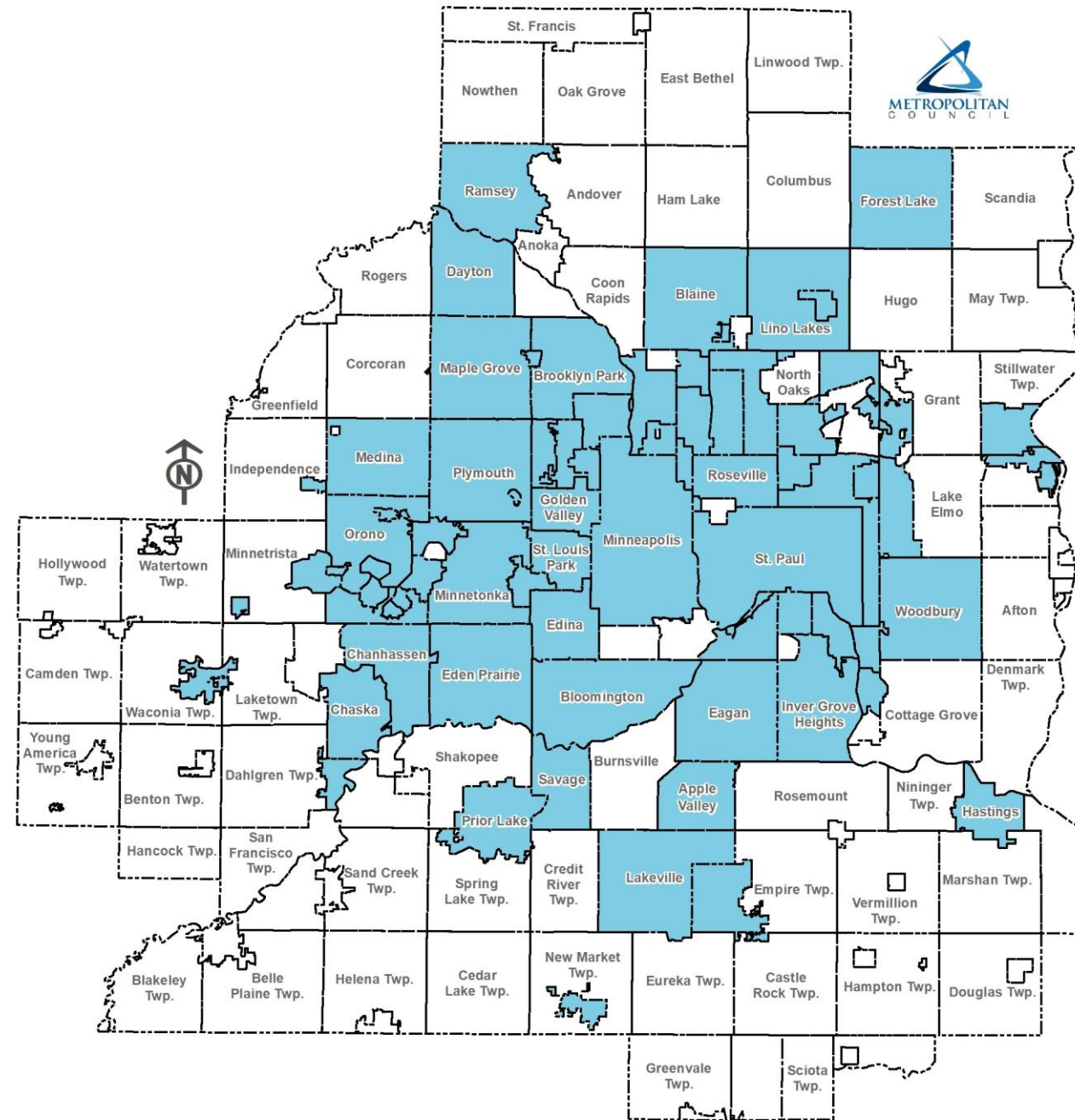


Municipal infrastructure capital improvements grant program: \$5 Million

- Grants to municipalities to reduce clear water in the municipal wastewater collection system
 - Grant funding traditionally covers up to 50 percent of the inflow and infiltration portion of project cost
- Cities are eligible if:
 - They have excessive contributions of inflow and infiltration, or
 - Have a measurable flow rate within 20 percent of the allowable flow limit

Over 80 cities and townships impacted by inflow and infiltration

Apple Valley • Arden Hills • Bayport • Birchwood • Blaine • Bloomington • Brooklyn Center • Brooklyn Park • Carver • Centerville • Chanhassen • Chaska • Columbia Heights • Crystal • Dayton • Deephaven • Eagan • Eden Prairie • Edina • Elko-New Market • Excelsior • Farmington • Forest Lake • Fridley • Golden Valley • Greenwood • Hastings • Hopkins • Inver Grove Heights • Lakeville • Lauderdale • Lexington • Lilydale • Lino Lakes • Little Canada • Long Lake • Mahtomedi • Maple Grove • Maple Plain • Maplewood • Medicine Lake • Medina • Mendota • Mendota Heights • Minneapolis • Minnetonka • Minnetonka Beach • Mound • Mounds View • New Brighton • New Hope • Newport • North St. Paul • Oak Park Heights • Oakdale • Orono • Osseo • Plymouth • Prior Lake • Ramsey • Robbinsdale • Roseville • Savage • Shoreview • Shorewood • South St. Paul • Spring Park • St. Anthony • St. Bonifacius • St. Louis Park • St. Paul • St. Paul Park • Stillwater • Spring Park • Tonka Bay • Vadnais Heights • Waconia • Wayzata • West St. Paul • White Bear Township • Woodbury



Regional Parks and Trails Bonding Program



Sustainability: Parks

Build a resilient region that fosters healthy residents and communities through investments in parks and trail infrastructure, supports active living, and restores natural resources to help mitigate the challenges of the climate crisis.



Regional Parks and Trails

\$2.5 million

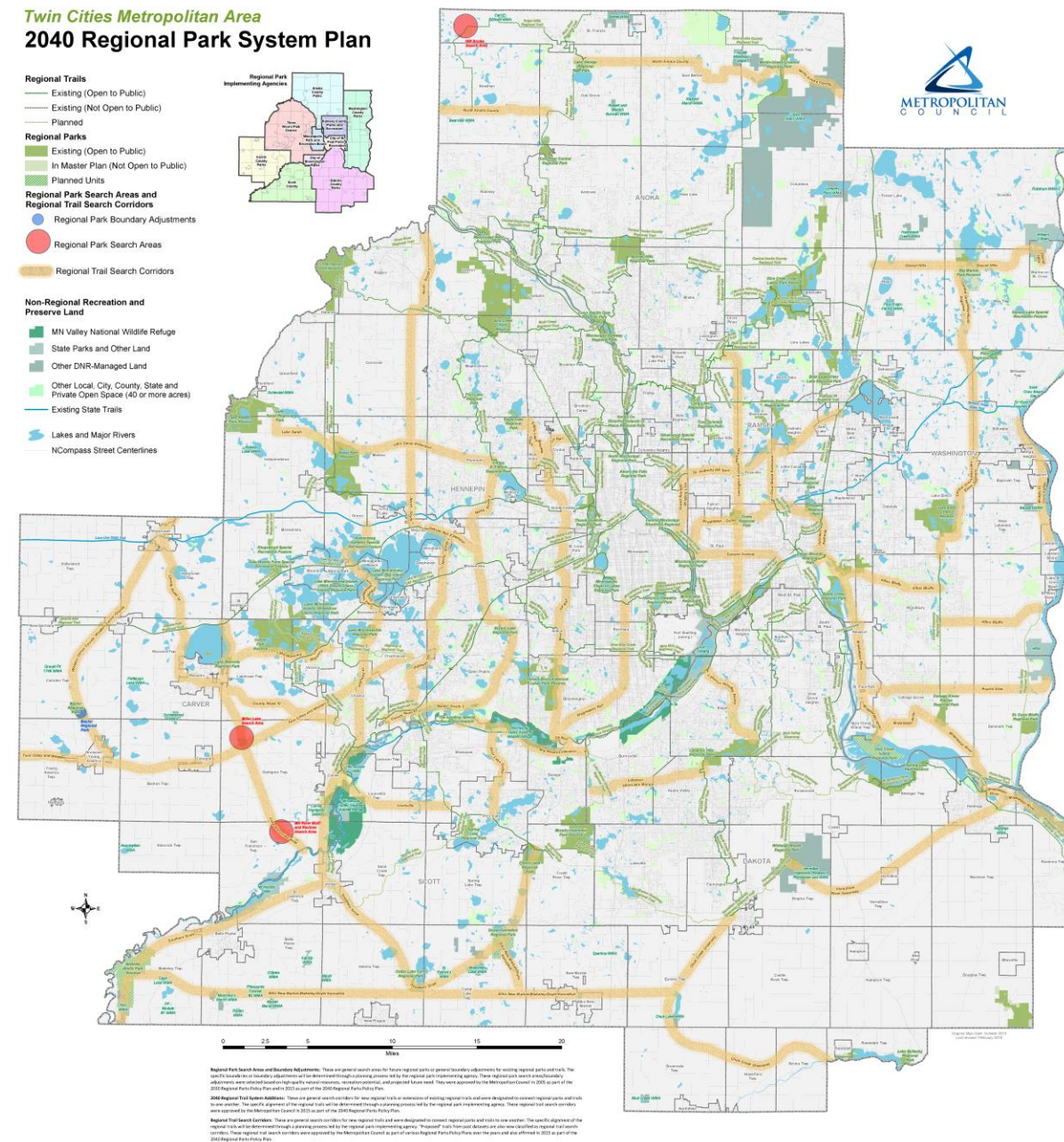
- Matched with \$1.67 million in regional funds to improve regional parks and trails
- 100% of funds passed through to the ten regional park implementing agencies
- Critical investments distributed across the region



Regional Parks System

The region's parks and trails

- Connect people to the outdoors
- Protect natural resources
- Make sure everyone in the region has access and feels welcomed



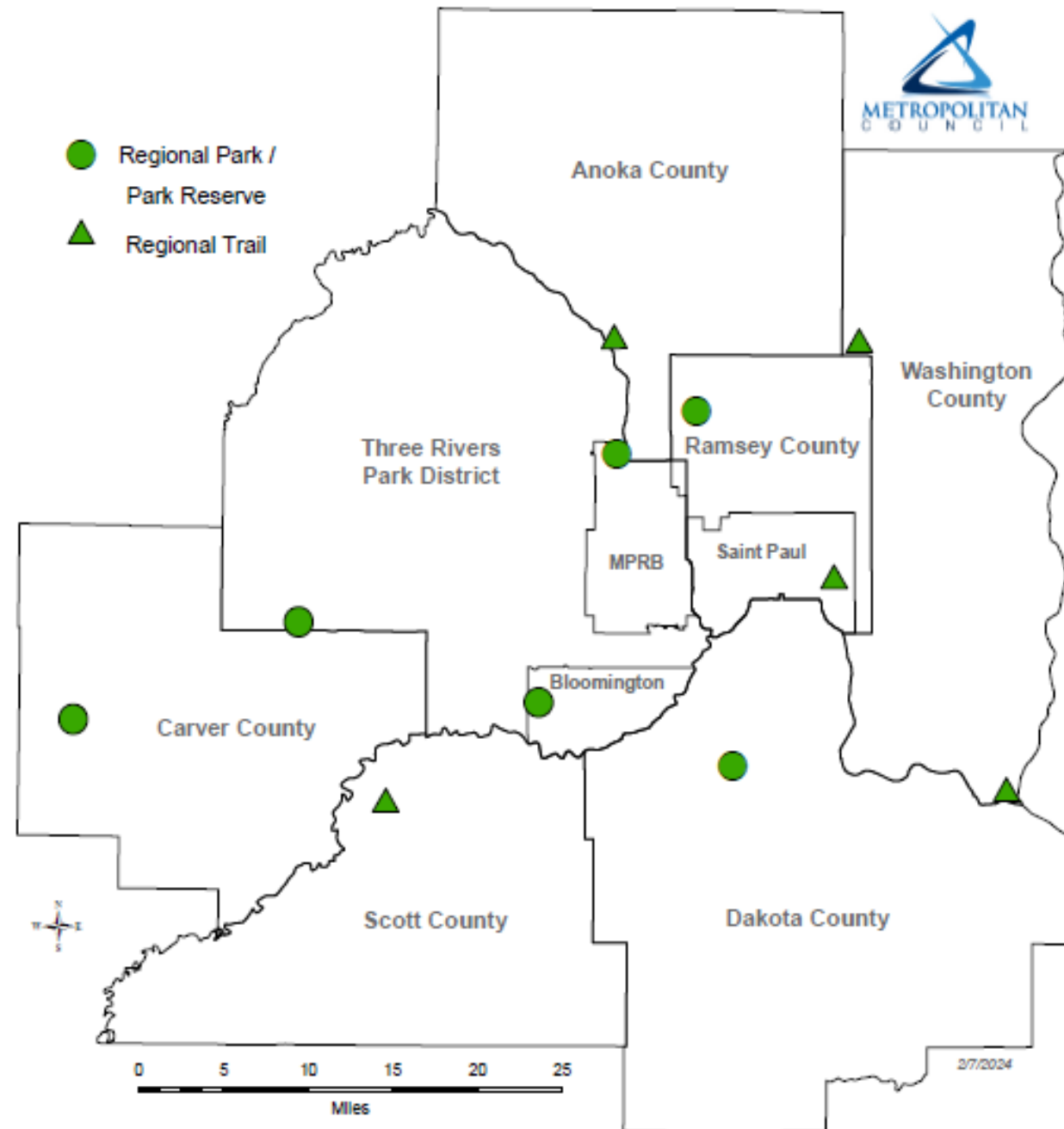
2024 Recommendation: Breakdown by Agency

Regional Park Implementing Agency	Amount
Anoka County	\$407,297
Bloomington	\$97,941
Carver County	\$129,791
Dakota County	\$453,638
Minneapolis Park & Recreation Board	\$869,914
Ramsey County	\$364,867
Saint Paul	\$475,921
Scott County	\$156,473
Three Rivers Park District	\$925,936
Washington County	\$284,890
Total State Bond + Council Match	\$4,166,667

Improving Parks Across the Region

\$2.5 million + \$1.67 million matching regional funds

- This funding would contribute to 11 projects throughout the region
- Improving trails, beaches, facilities, and accessibility features to meet wide-ranging needs





Charlie Zelle

Chair, Metropolitan Council

