

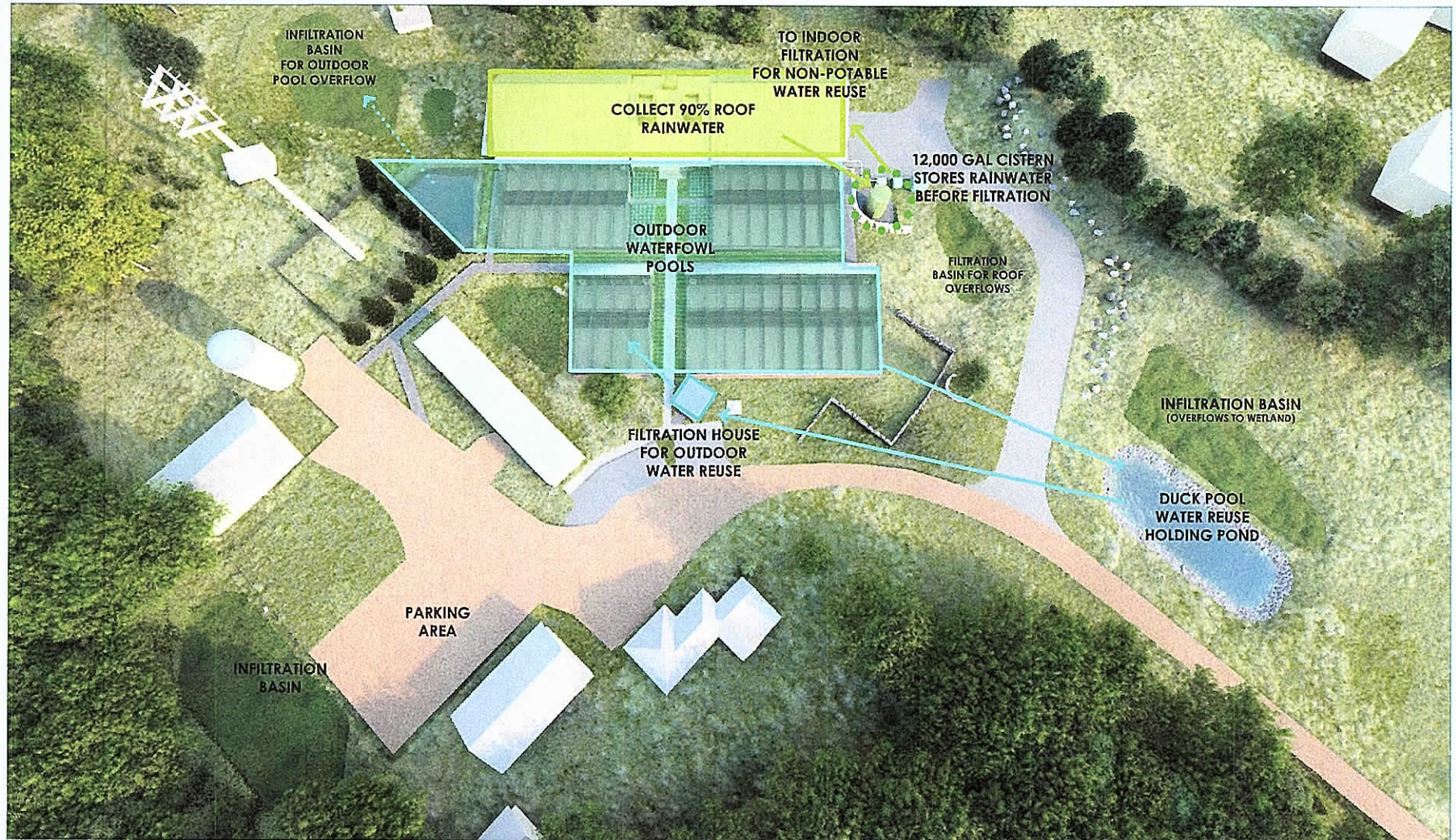
The Sustainable
Future of Wildlife
Medicine

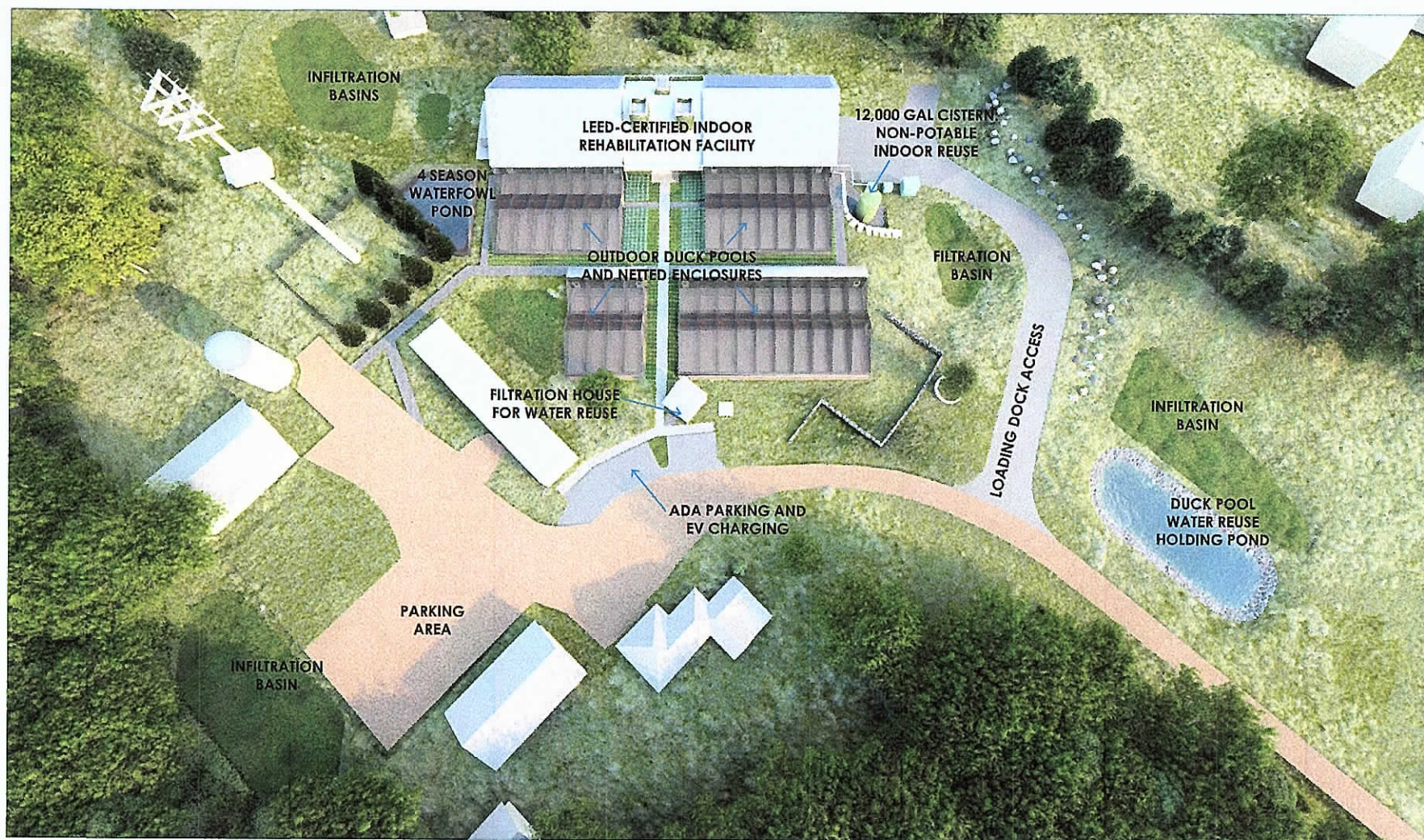
WRC's Grant Campus

The world's busiest wildlife hospital sets its eyes
on creating a sustainable, LEED-certified, campus:
Revolutionizing wildlife medicine.





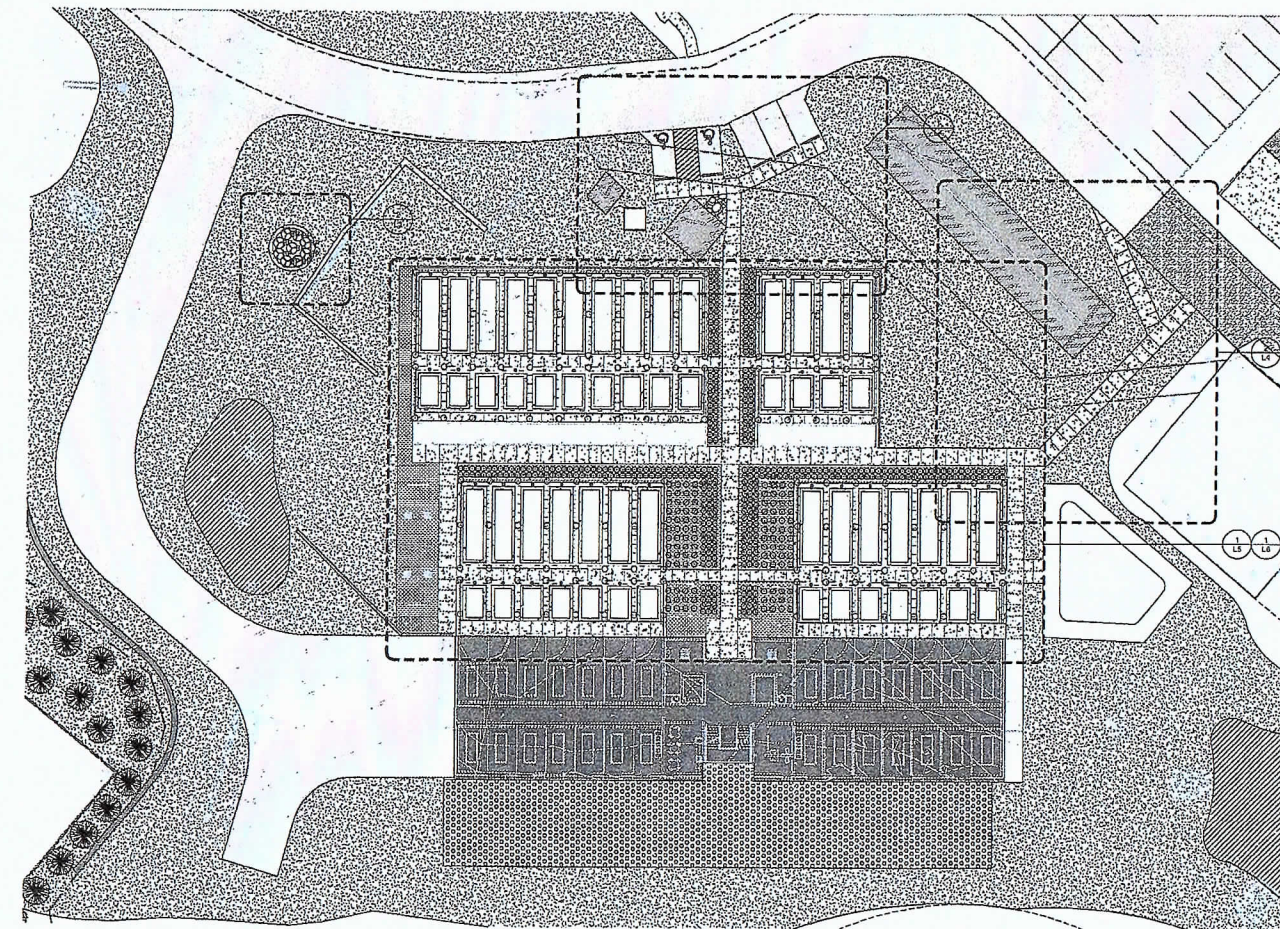












1 CAMPUS ZONE PLANTING
1" = 20'-0"



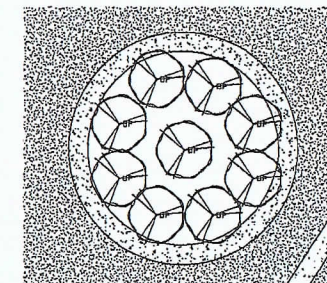
PLANT LEGEND

- PROPOSED EVERGREEN TREE WITH SPECIES KEY
 EXISTING EVERGREEN TREE TO REMAIN
 PROPOSED DECIDUOUS TREE WITH SPECIES KEY
 EXISTING DECIDUOUS TREE TO REMAIN

Plant Schedule					
Plant Code	Botanical Name	Common Name	Can't	Remarks	Count
RET PMP	Betula nana	Paper Birch	015 CCHT.		9
LAR LAR	Larix laricina	Tamarack	0' BSB		5
PIN RED	Pinus resinosa	Red Pine	0' BSB		15
PIN STR	Pinus strobus	White Pine	0' BSB		21
PT	Prunella	Choking Aspen	0' BSB		29
SCH LIT	Schizachyrium scoparium	Little Bluestem	#1		104
SPO HET	Sporobolus heterophyllus	Franseria	#1		419
Grand total					601

MATERIALS LEGEND NOT ALL MATERIALS USED ON SHEET

- ASPHALT PROPOSED
 CONCRETE EXISTING
 CONCRETE PROPOSED
 CONCRETE WALL EXISTING
 WALL PROPOSED
 ENCLOSURE SEED MIX (TBS)
 3/4" WASHED RIVER ROCK
 GRAVEL ROADS EXISTING
 GRAVEL ROADS PROPOSED
 MUDOT 33-621 DRY PRAIRIE S.E. MIX
 MUDOT 33-291 STORMWATER S.W. MIX
 BOW - BOWIE BUFFALO GRASS MIX
 PLANTING BED - HARDWOOD MULCH
 FLAGSTONE PAVING
 DRAINAGE VALVE LOCATION



2 SITE PLANTING ENLARGEMENT 1
1/4" = 1'-0"

LAYOUT LEGEND

- SECTION DETAIL KEY
 KEYNOTE - REFER TO KEYNOTE TABLE

AMH
 AMH Architects, Inc.
 10 E 26th St
 Minneapolis, MN 55404
 (612) 338-8355
 amh.com

STRUCTURAL ENGINEER
 URS & AMH
 1000 University Ave W, 20
 Paul, MN 55114
 (612) 338-8355
 urs.com

PROJECT

Wildlife Rehabilitation Center
 10529 Jamaca Ave N, White Bear Lake, MN 55115

CHECKED BY: [Signature]
 DESIGNED BY: [Signature]
 DRAWN BY: [Signature]
 DATE: [Date]
 SCALE: [Scale]

DATE: 5/14/23
 DRAWN: DC
 CHECKED: RUI
 APPROVED: RUI

CAMPUS ZONE
 LANDSCAPE PLAN

SHEET NO. [Number]
 L3

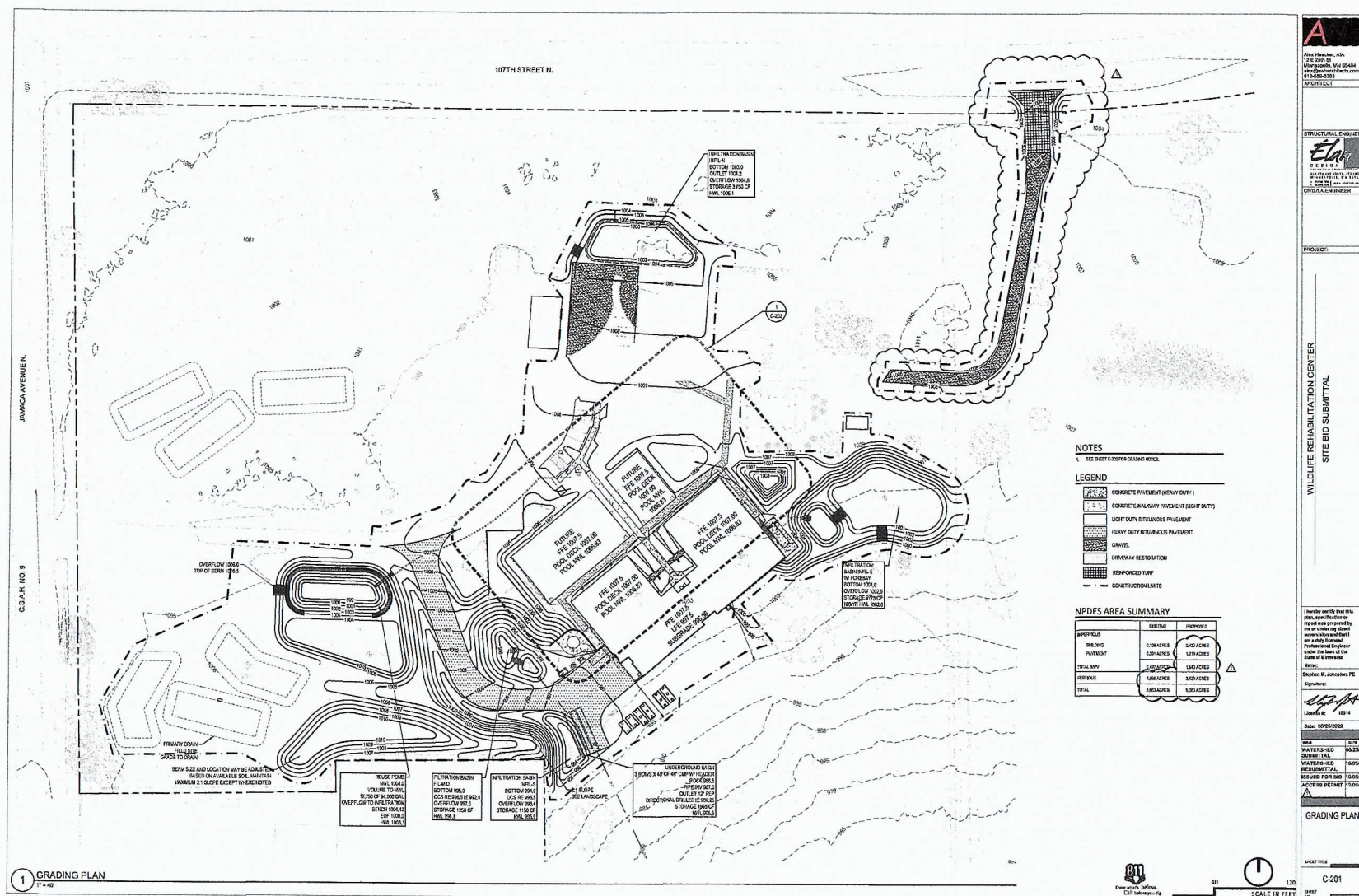
Ducks. Ducks are messy. World-class Water Filtration and Recycling

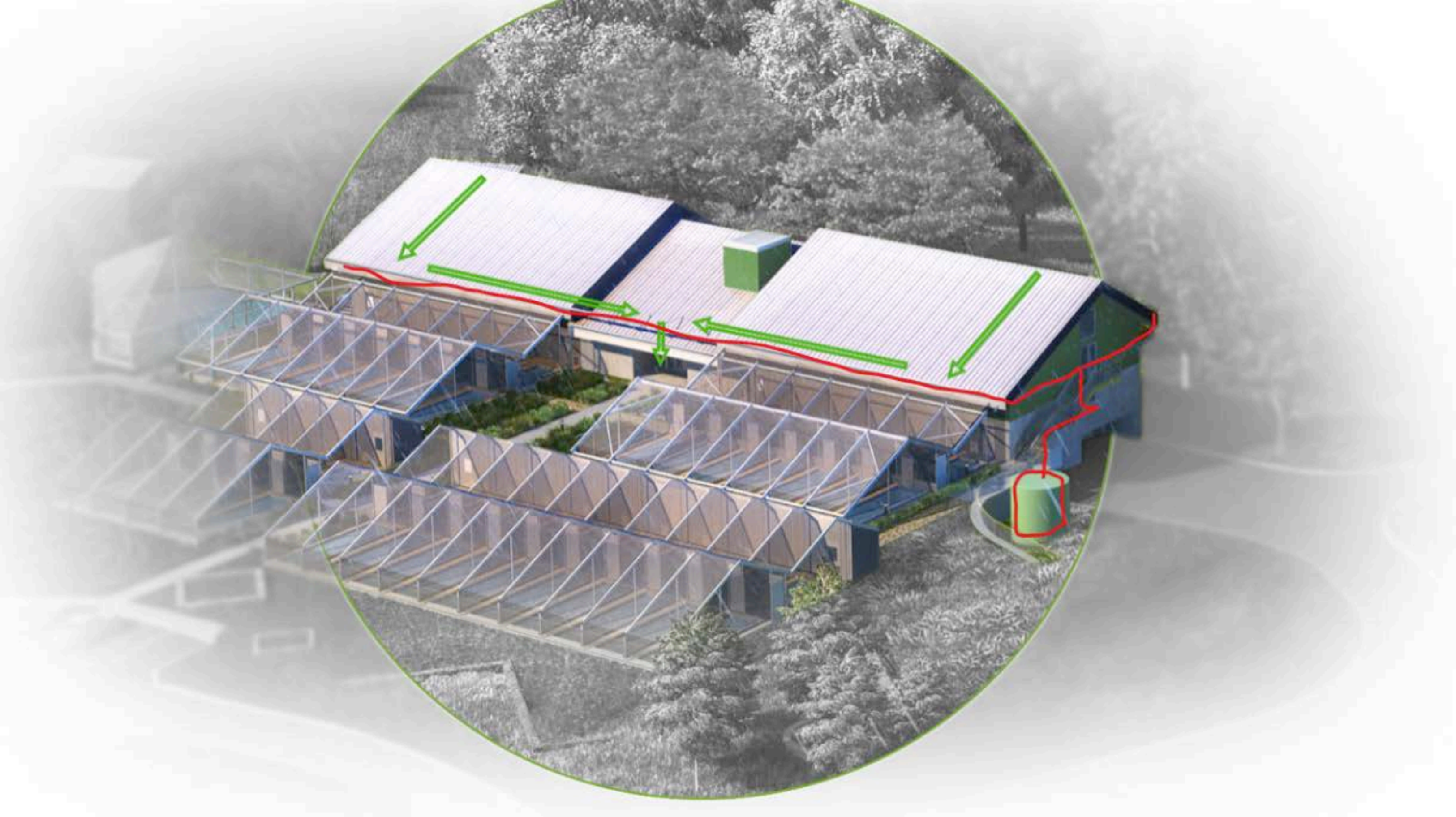
Conserving natural resources and being stewards of the environment means helping all wildlife, not just WRC patients.

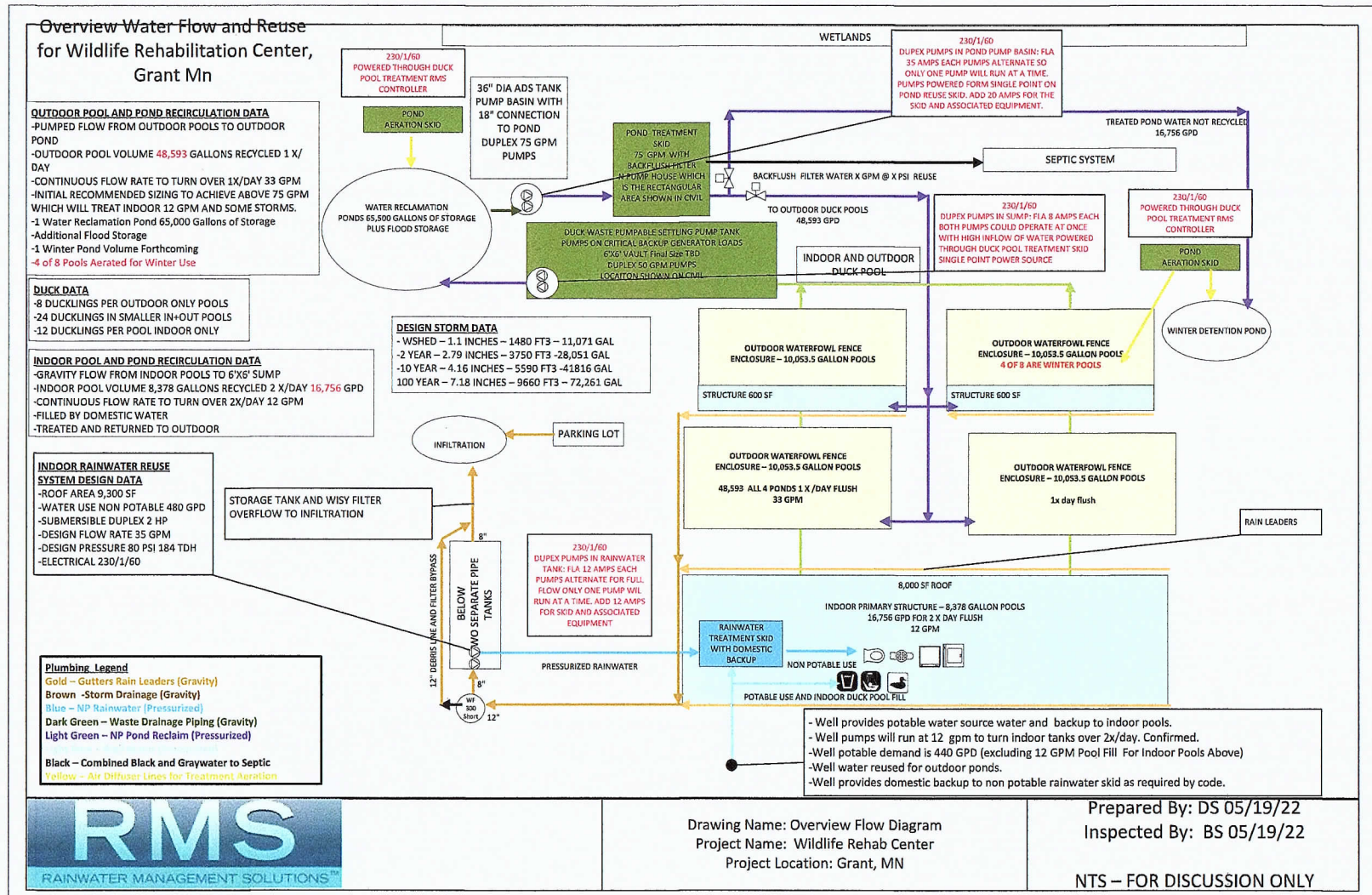
WRC's commitment to precious water resources in Washington County means building a first-of-its-kind pool filtration system, adding millions of dollars to the project. The WRC Board of Directors determined it was worth increasing building costs to protect the environment.

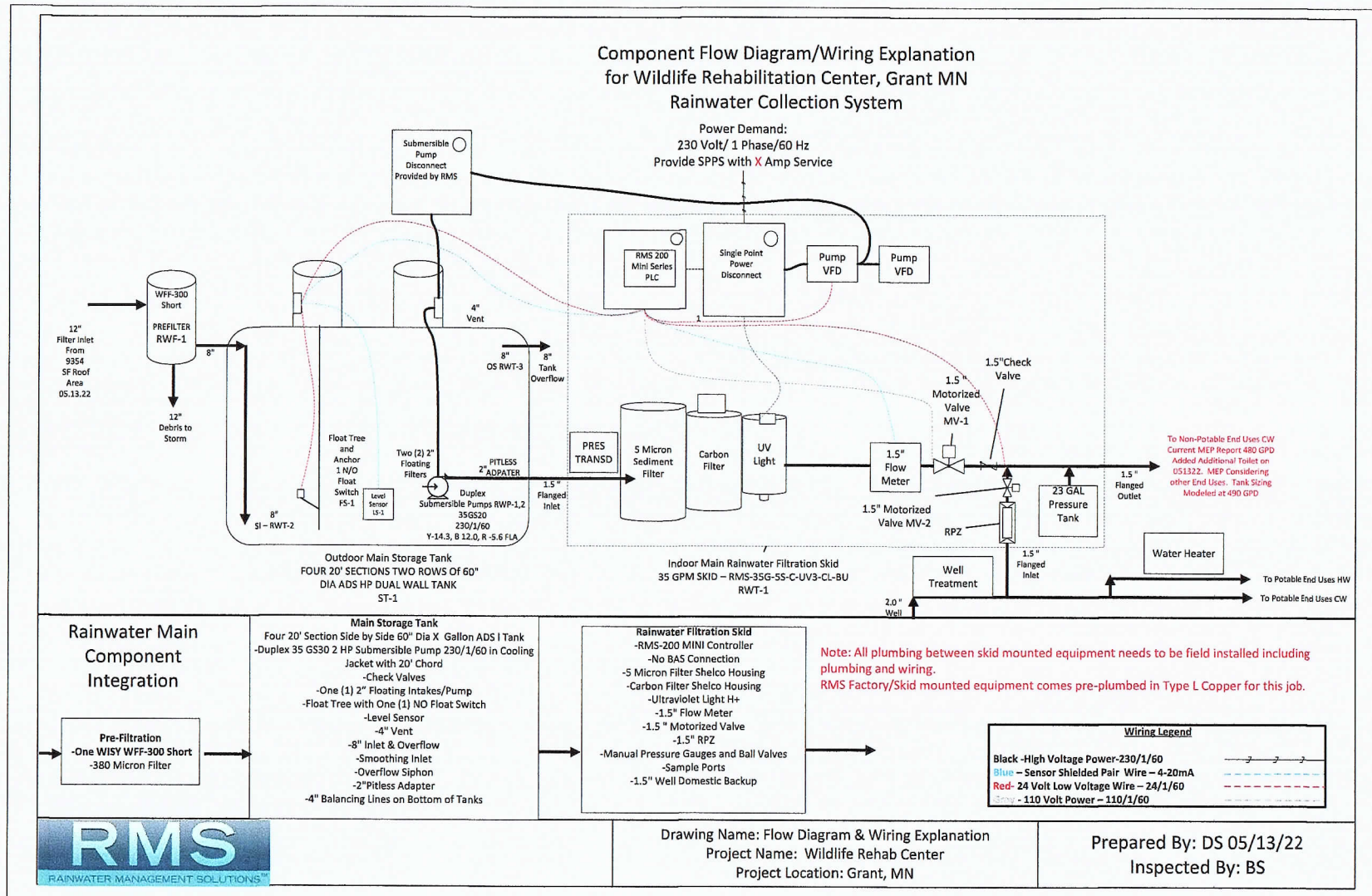
More than 3,000 ducklings annually will grow up in filtered, clean water thanks to the work of Rainwater Management Systems. **Their innovative system is LEED certified and has been greenlighted by the watershed districts, the state and the county.**



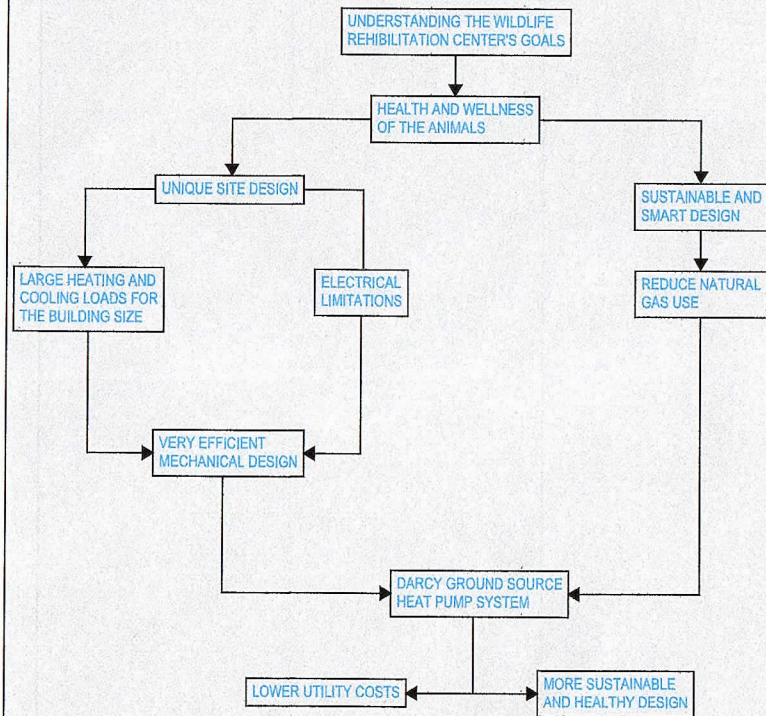








WHY DARCY FOR WRC?



BETTER EFFICIENCIES WHICH MEANS LESS POWER CONSUMPTION:

- AIR SOURCE HEAT PUMP : 3.2 (2.05)
- GROUND SOURCE HEAT PUMP: 3.7
- DARCY SYSTEM: 5.0

When compared to traditional HVAC systems Darcy have an estimated 70% lower carbon emissions and a 70% lower cooling cost

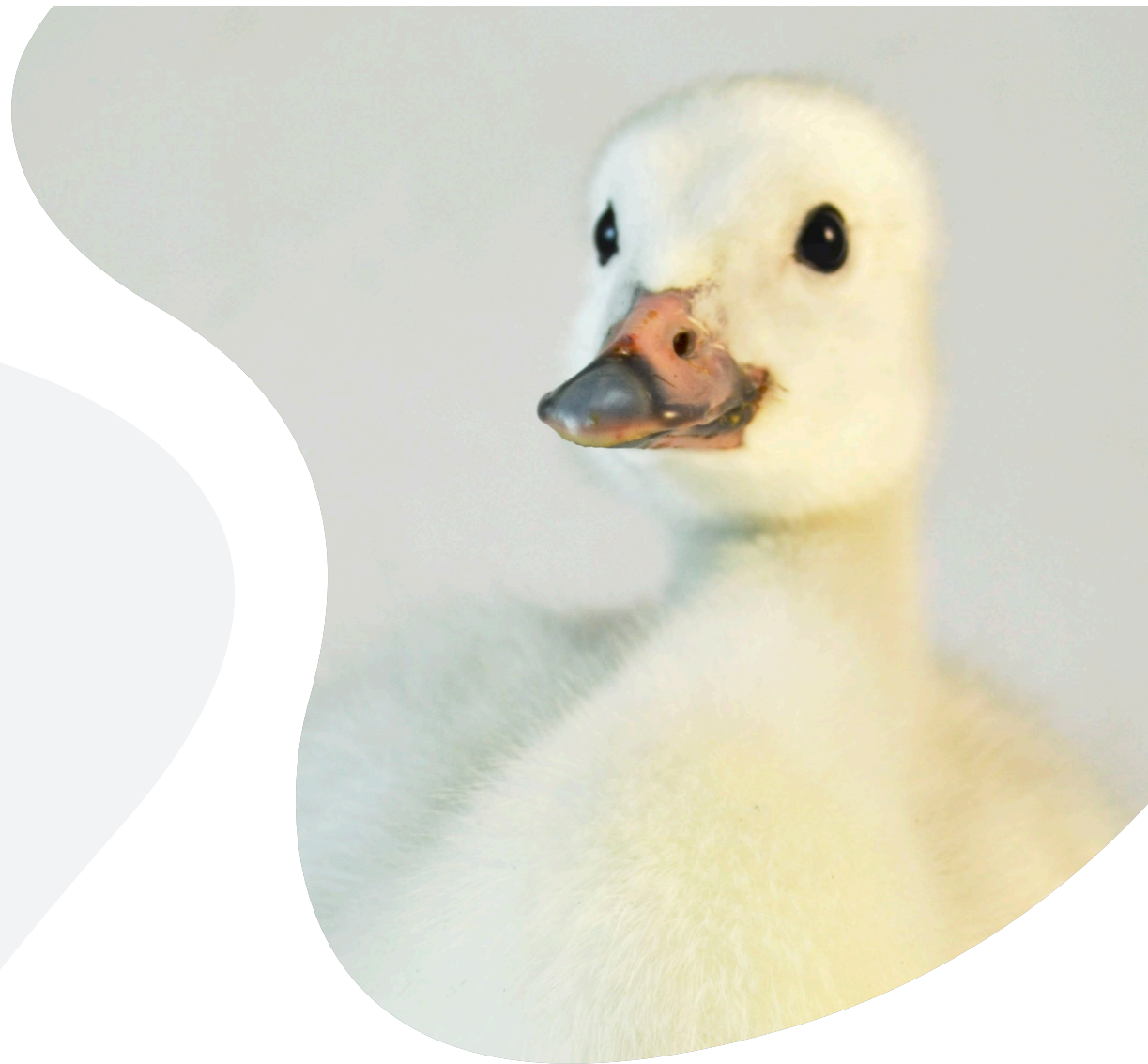
LESS GROUND DISTURBANCE:

- traditional systems rely on less efficient means of heat transfer
- this less efficient means of heat transfer requires more land to be utilized in order to accomplish the same goal
- A single Darcy bore hole can deliver 20 times the capacity of a traditional geothermal bore hole



**Solar alone will save
nearly 2,500,000
pounds of CO₂;
equivalent to 38,000
trees growing for 10
years.**

The geothermal system, incorporating technology created at the UMN and designed by Darcy Systems, provides 100% fossil fuel-free heating and cooling.



Trumpeter Swans,
and their cygnets, will have a
new facility to help them return
to the wild.

**Releasing an animal
to the wild, after it has
recovered from injuries,
is a life-changing
moment.**

