



CIVIL LEGAL SERVICES
IN MINNESOTA

**SEEKING JUSTICE
FOR ALL**

Senate Judiciary and Public Safety
Finance and Policy Committee

February 24, 2023

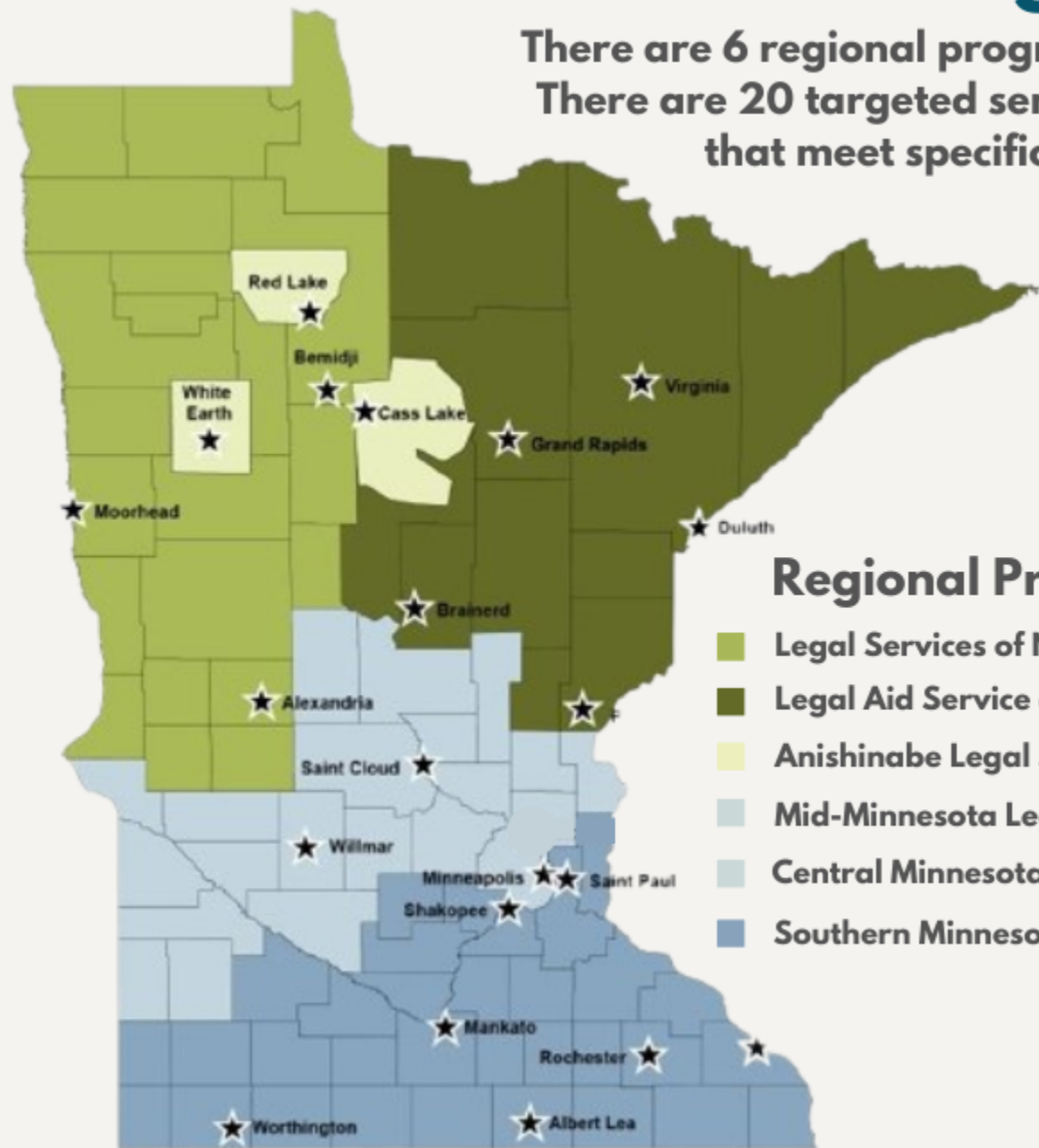
Presented by:

Dori Rapaport | Executive Director
Legal Aid Service of Northeastern Minnesota



Minnesota Civil Legal Services Programs

There are 6 regional programs covering all 87 counties in Minnesota.
There are 20 targeted service programs and support organizations that meet specific population or geographic needs.



Regional Programs

- Legal Services of Northwest Minnesota
- Legal Aid Service of Northeastern Minnesota
- Anishinabe Legal Services
- Mid-Minnesota Legal Aid
- Central Minnesota Legal Services
- Southern Minnesota Regional Legal Services

Targeted Programs

- Cancer Legal Care
- Community Mediation Minnesota
- Farmers Legal Action Group
- HOME Line
- Housing Justice Center
- Immigrant Law Center of Minnesota
- Indian Child Welfare Act (ICWA) Law Center
- Judicare of Anoka County
- Legal Assistance of Dakota County
- Legal Assistance of Olmsted County
- LegalCORPS
- Legal Services State Support
- Loan Repayment Assistance Program of MN
- Minnesota Disability Law Center
- Minnesota Justice Foundation
- Rainbow Health
- Standpoint (f/k/a Battered Women's Legal Advocacy Project)
- The Advocates for Human Rights
- Tubman
- Volunteer Lawyers Network

The People We Serve

Who We Serve

- At or below 125% of Federal Poverty Guidelines
(\$37,500 annual income for a family of 4)
- A civil legal issue
(Focus on basic needs, safety, shelter, health, and sustenance)
- Legal merit
- Availability of other resources

Demographics

CLS provides access to the justice system for Black, Indigenous, and People of Color; people with disabilities, the elderly; the LGBTQ community; and veterans. These populations have disproportionate numbers of people with low income who qualify for CLS services.

2021

93,570 Minnesotans served

43,762 cases closed

In 2021, 53% of clients served by CLS were non-white.

- 25% Black
- 14% Hispanic
- 5% Asian
- 4% Native American
- 4% Other



Civil Legal Services Average Salary Comparison

Assistant Public Defender

requested starting salary for FY24

\$82,908

Assistant Public Defender

current starting salary

\$70,146

Civil Legal Services

requested starting salary for FY24

\$70,000

Judicial Branch Law Clerk

current starting salary

\$57,712

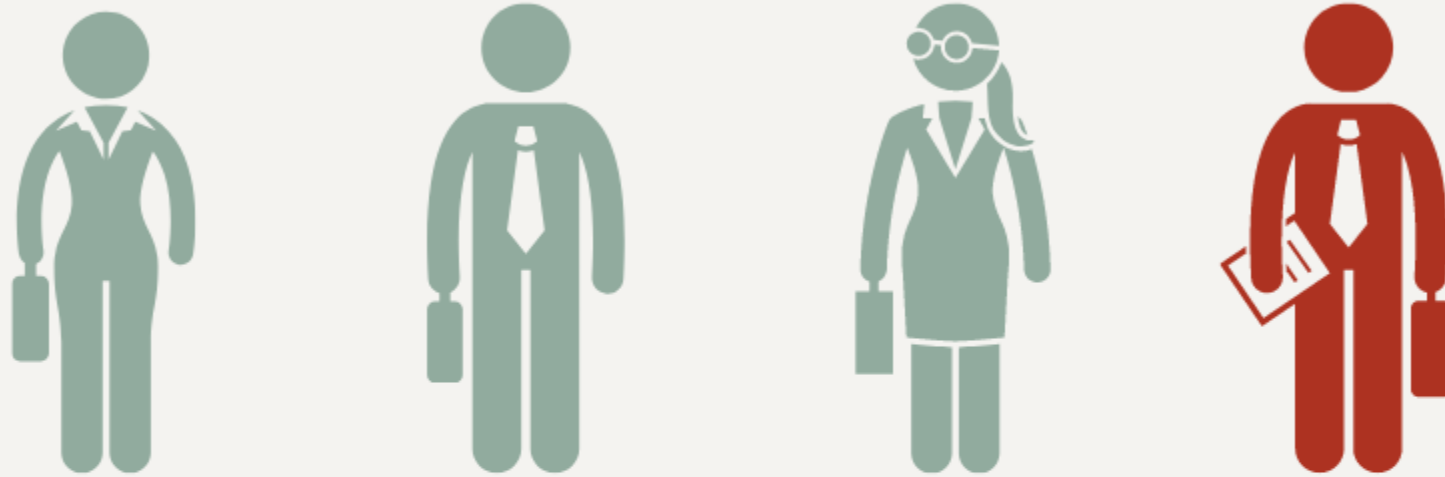
Civil Legal Services

current starting salary

\$56,362



2022 Civil Legal Services Turnover



2022 CLS turnover rate = 24%

2020/21 CLS turnover rate was 32%.
Salary parity progress is moving the needle.

Civil Legal Services Turn away rate - 2022

(Data is based on samplings from three MN Civil Legal Service programs.)



Minnesotans who apply and are eligible for legal assistance from a CLS organization.



45% receive services

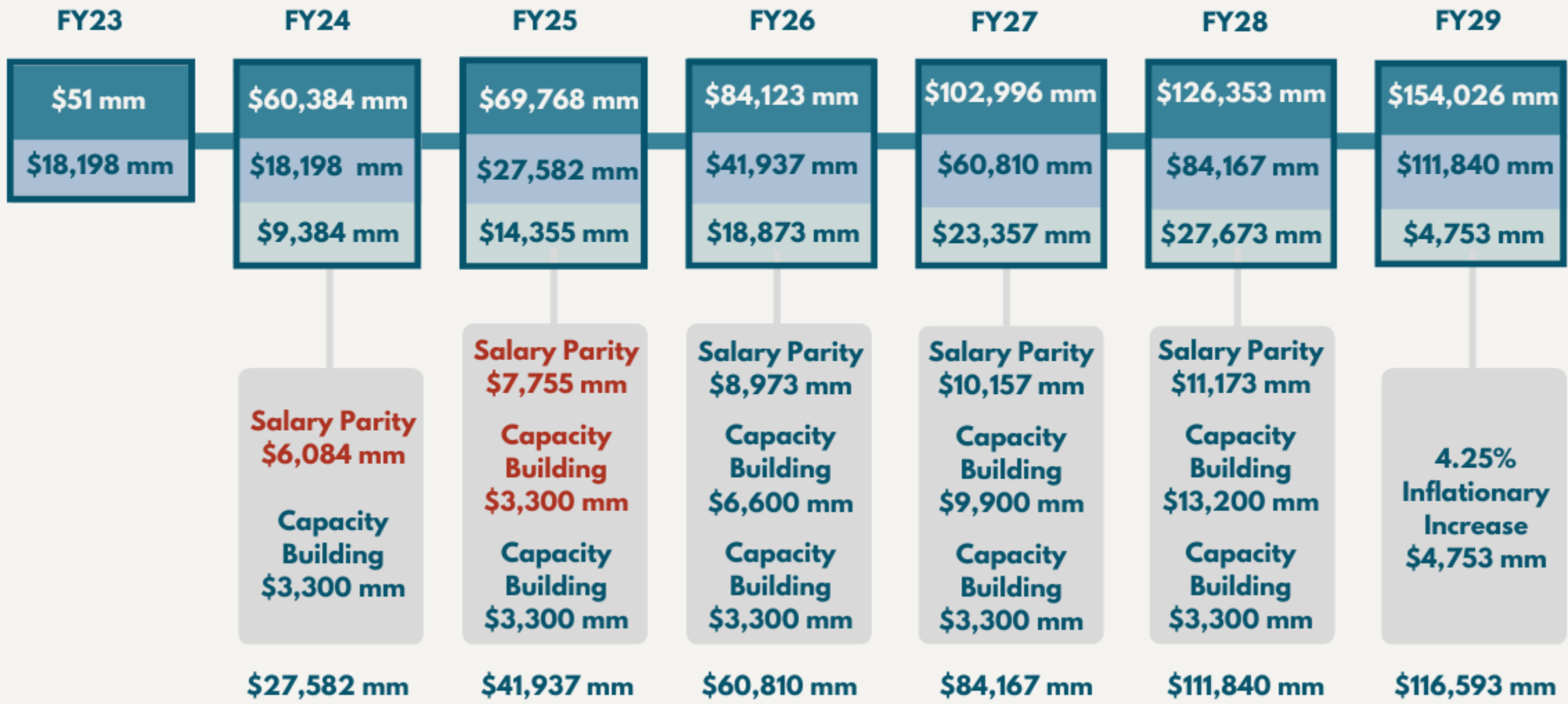


28.6% are fully served

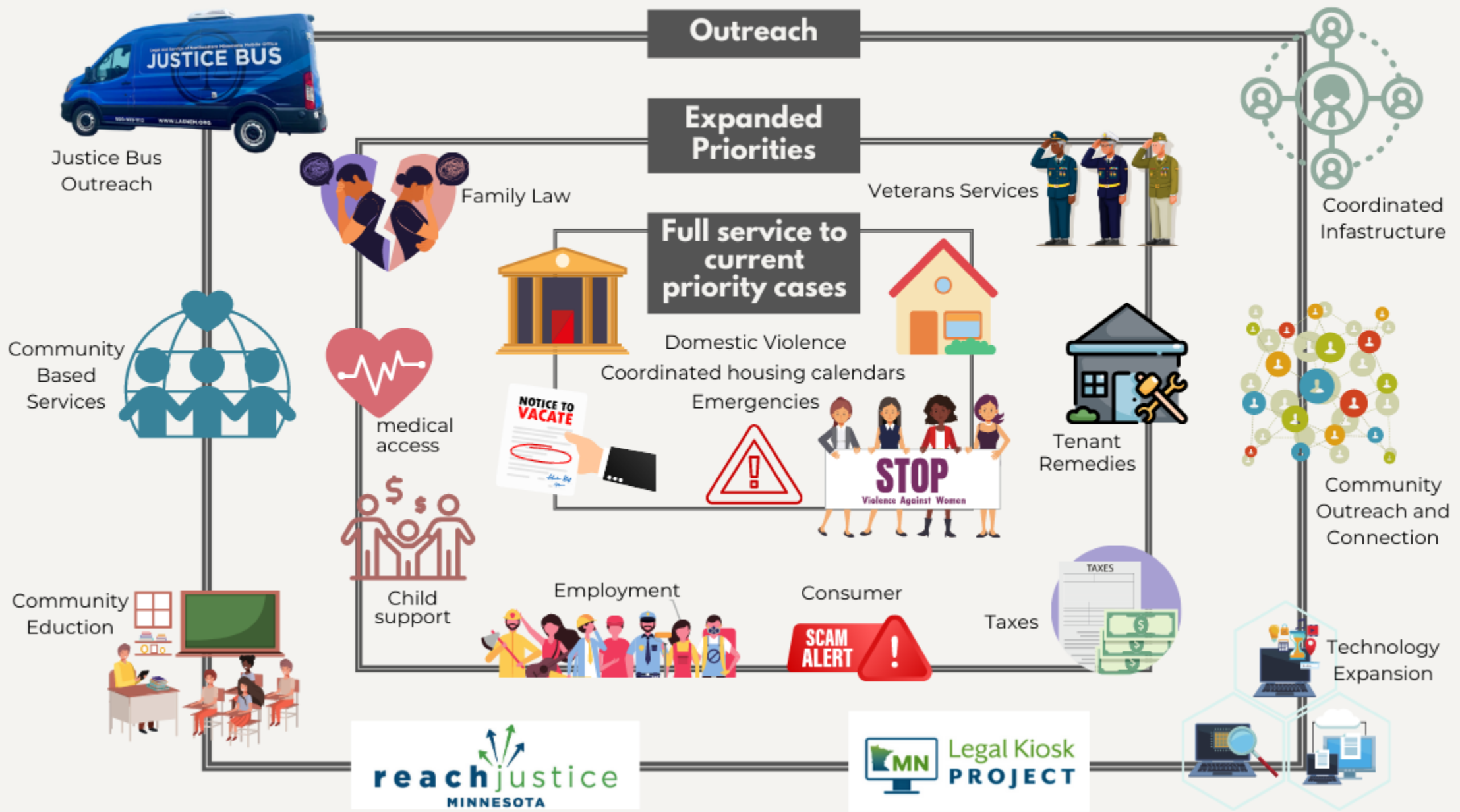
Sample data indicates 71.4% of advice-only cases needed further services.

Fully funding Civil Legal Services

Total CLS Budget
 State Base
 Increase to the Base



A Fully Funded Civil Legal Services looks like:



Q & A

Contact Information:

Dori Rapaport

drapaport@lasnem.org

218-623-8119

Legal Aid Service of Northeastern Minnesota