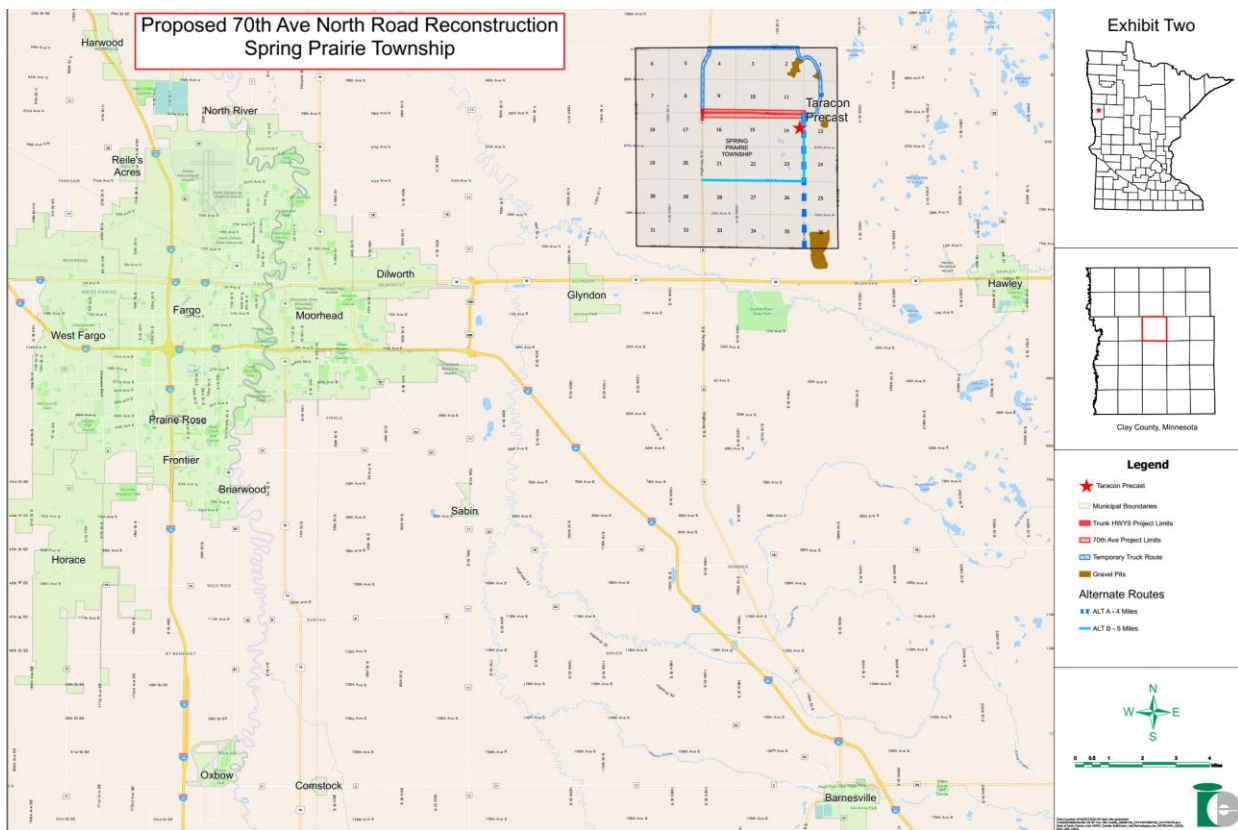


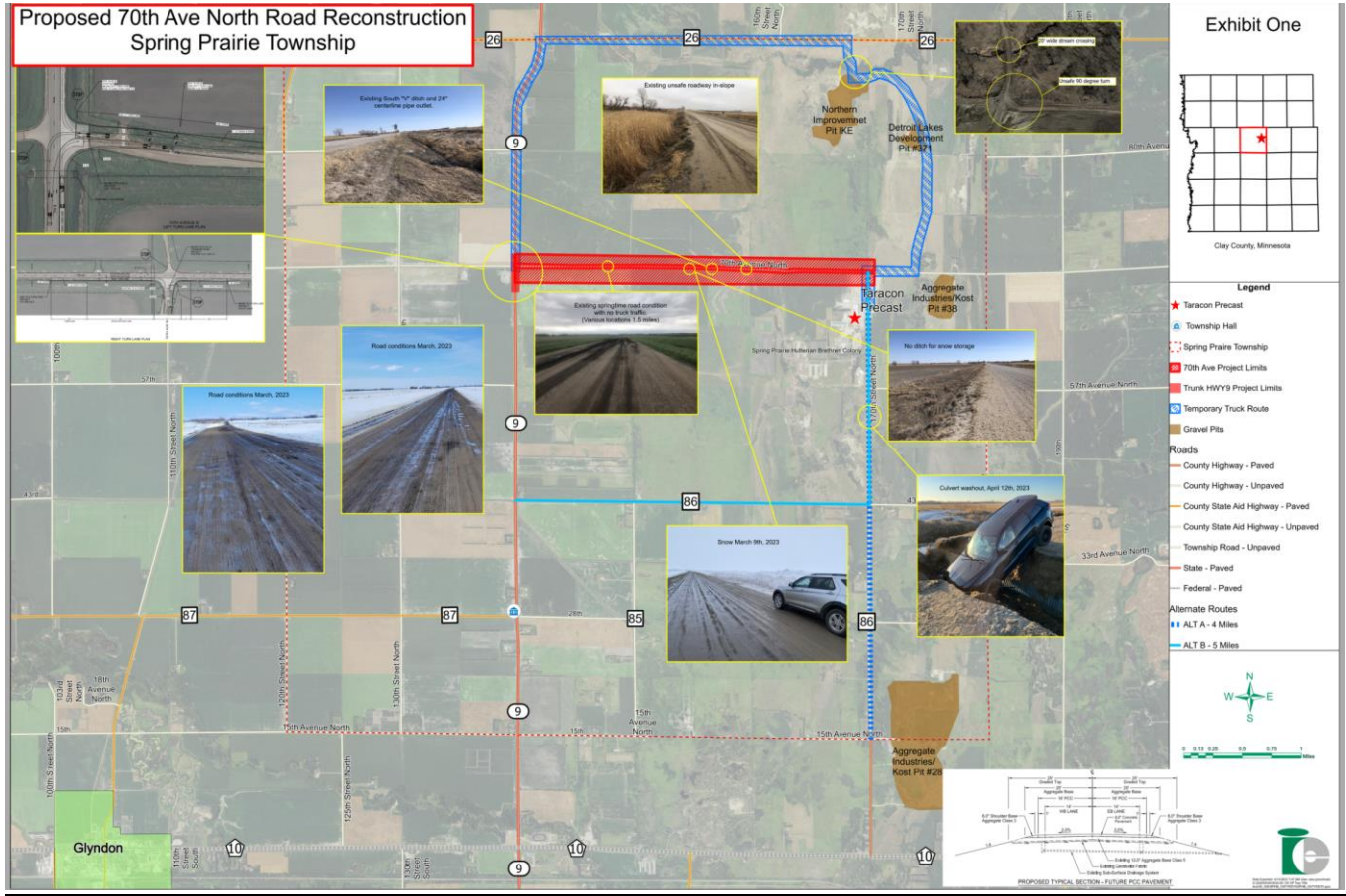
## Spring Prairie Township Road 70<sup>th</sup> Avenue North Reconstruction Project, Cass County MN

- There are multiple businesses and aggregate production operations in the vicinity of this project that use the three miles of township road as the shortest distance to transport aggregate materials, agricultural and manufacturing products, and goods to State Trunk Highway 9 and then across Clay County, Region, and State of Minnesota.
- Required to meet current MNDOT Standards and increase the existing aggregate surfaced road from a 5-Ton Road, that is closed to heavy vehicle traffic 2 months every Spring, to provide an all-weather surfaced 10-Ton Road.
- **Census Data From 2000 to 2020:** The FM Metro Area Population Growth Increased by 23.3% and Spring Prairie Township Population Growth Increased by 37.5%



- The Township Road is deficient to serve Clay County's Economic Development needs.

# 70th Ave. North - Spring Road Conditions



May 31, 2022, 70<sup>th</sup> Ave. North condition with no trucks last Spring



**May 31, 2022, 70<sup>th</sup> Ave. North condition with no trucks last Spring**



**Wednesday, April 12 approx: 6:20AM**

Water running from ditch on east side of road through culvert to west side of road. From west side water continues to travel west south of the main colony property. Yellow arrows indicate "path of travel" of water from east to west. Washout spans the entire length of the road is approximately 10 ft. wide and 7 ft deep.



**Township Road 170<sup>th</sup> ST. North.  
(Alternate access road for employees)**

**Wednesday, April 12 Approx: 7:15AM**

This is the second vehicle that drove into washout. The first vehicle drove in sometime between 4:40AM – 5:00AM. Both vehicles were pulled out by a colony member using a payloader.

It should be noted that there was a temporary barricade to the south at the intersection (approximately 1 mile in distance). The barricade was apparently set in place by the county the prior evening. This free-standing wood barricade was painted white with orange highlights. The barricade did not span the entire width of the road and vehicle had the ability to easily “drive around either side of it.



**Township Road 170<sup>th</sup> ST. North.  
(Alternate access road for employees)**

## **A Community of Family and Economic Development**

- Clay County is home to the Spring Prairie Hutterian Brethren, Inc. (SPHB), one of ten colonies in Minnesota. Founded in 1979, the colony has over 200 individuals and 45 households. Approximately 4,200 acres are collectively owned by the family members.
- The family community consists of clustered housing with onsite amenities such as schools, churches, clinics, community centers, and childcare facilities. All supported by agriculture, and facilities that may utilize both labor from colony members as well as employ others in the region.
- SPHB operates multiple businesses, such as Taracon Precast, Taracon Logistics, Wyan Precast Services, Blumenfeld Dairy, Spring Prairie Red Angus and Spring Prairie Electrical all depend on a high quality federal, state, and local transportation system to operate effectively and efficiently.
- These businesses provide significant regional economic value, employing almost 400 employees from outside of the Colony. Plans are underway to more than double these current employment numbers over the next 20 years.

## **Taracon Precast**

- A Design, Engineering, and Manufacture of Architectural precast concrete wall panels, hollow-core slabs, double tee's, stairs, column and beam structures for buildings and infrastructure projects throughout MN, ND, IA, WI, SD, NE, CO and MT.

### **Taracon Employees**

| <b>Date</b> | <b>FTE's</b> |
|-------------|--------------|
| 12/31/20    | 32           |
| 12/31/21    | 75           |
| 12/22/22    | 157          |
| 04/13/23    | 192          |

- Heavy Vehicle Loads for Taracon Precast Manufacturing operation in 2020 were over 7,600 loads and in 2022 exceeded 14,500 truckloads.
- Total individuals traveling roads on a day to day between all companies: 240
- The average employee benefit is \$1,100/month.
- Taracon is faced with a constraint by a lack of transportation infrastructure for employees to get to and from work and move products to market.
- A new Finish Building has been permitted, an estimated \$12 Million Investment.
- An IMPLAN Analysis of the Economic Development Effects of Taracon Precast operation for Clay County and the State of Minnesota are in progress.



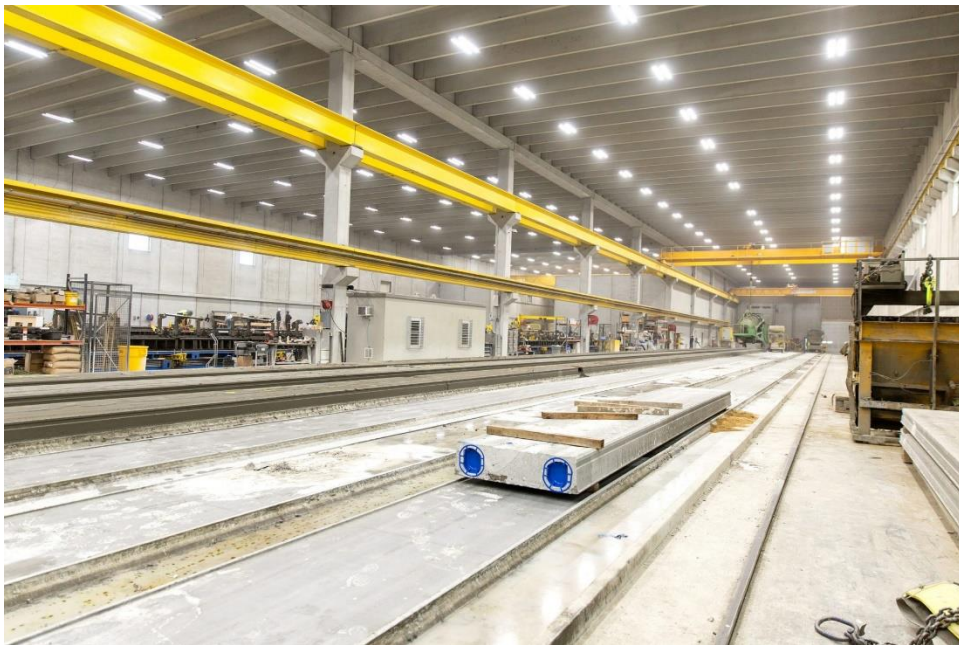








Building 1 Taracon rebar fabrication



Building 2 Taracon hollow-core production





Building 2 Taracon precast production



Building 3 Taracon precast production



Building 3 Taracon precast production



South view of Building 1, Building 2, and Blumenfeld Dairy





West view Build 3 and office complex



Northwest view of yard at 70th Ave N.



North view of yard and 70th Ave N. and 170th St. N.



Northeast view of Double Tee facilities, fuel pumps, and Taracon Logistics



East view of Taracon Logistics offices



Southeast view of wall staging yard and offices



**Riverhouse Project being erected April 2023**



Installation of Polished Precast Concrete Brick Exterior Wall Panels





**Mark Twain School Project**

# Monticello Fire Station



After more than 30 years of service to the City of Monticello, MN the fire station was ready for an upgrade. As the city grew by leaps and bounds, the small fire station could no longer meet the needs of the growing community. When the city council decided a new building would be the most efficient and effective solution, the project team went to work to create a modern, streamlined, and beautiful facility.

Taracon Precast produced the precast concrete used to construct the 22,700 square-foot total precast structure. The station features six apparatus bay doors, full time living quarters, and conference space. Precast concrete's innate fire resistance, durability, low maintenance characteristics, energy efficiency, and fast erection schedule made it the perfect choice for this project.

The project team worked collaboratively to design and construct a state-of-the-art building that is both functional and visually appealing. The aesthetic design utilizes a variety of aggregates, color matching, and finishes, highlighting different textures and visual nuances. A combination of sandblast, acid etch, and exposed aggregate finishes coupled with modern colors creates a striking appearance.

Architect: **Brunton Architects & Engineers**  
Contractor: **KUE Contractors Inc**  
Owner: **City of Monticello**  
Precaster: **Taracon Precast**  
Precast Specialty Engineer:  
**Midwest Structure Engineering**  
PCI Certified Erector: **Wysan Precast Services**  
Location: **Monticello, MN**  
Year of Completion: **2020**



[www.taraconprecast.com](http://www.taraconprecast.com)



# The Lorient



The Lorient is a boutique mixed-use development set in the charming Morningside neighborhood of Edina, MN. This quaint area is nestled just outside Minneapolis and offers a unique feel with parks, historic architecture, and exceptional dining and shopping experiences all within walking distance.

The project includes 45 luxury rental apartments, 6,500 square feet of restaurant and retail space, 77 below-grade resident parking stalls, and 40 at-grade, covered public parking stalls. Patios, rooftop views, and outdoor spaces provide residents with access to nature while still delivering a city living experience. The Lorient is impressive with its modern amenities, premium services, and elegant details.

Taracon Precast manufactured over 60,500 SF of hollowcore, 130 inverted tee beams, and 56 columns for the foundational support, elevator shafts, and multi-level flooring. Designers were able to use precast stepped ledge beams and columns with varying haunch heights for balcony and amenity decks. Precast concrete was selected for this project because of its durability and load-bearing capabilities.



Architect: **ESG**  
Engineer: **Meyer Borgman Johnson**  
Contractor: **Stevens Construction Corp**  
Owner: **Orion**  
Precaster: **Taracon Precast**  
Precast Specialty Engineer: **Midwest Structure Engineering Inc.**  
PCI Certified Erector: **Wysan Precast Services**  
Location: **Edina, MN**  
Year of Completion: **2020**

  
**TARACON**  
precast  
[www.taraconprecast.com](http://www.taraconprecast.com)



## Nokomis Mixed-Use Development



Nokomis offers a mix of 130 studio, alcove, and one and two-bedroom apartments along with a 24,000 square foot supermarket that occupies the ground floor retail space. Residents have access to climate-controlled parking, business center, sky lounge, fitness center, and more.

Precast concrete's durability, low maintenance characteristics, energy efficiency, and fast erection schedule made it the perfect choice for this project. The precast concrete finish enhanced the luxury building design by highlighting different textures and visual nuances.

Taracon Precast and Wyan Precast Services manufactured, delivered, and installed almost 98,000 square feet of precast concrete hollow core, over 45,000 square feet of precast concrete insulated and solid wall panels, 130 inverted tee beams, and 196 columns, completing the project on time and on budget. The team worked collaboratively to design and construct a luxury multi-use building that is both functional and visually appealing.

Architect: **ESG Architects Inc**  
Engineer: **Midwest Structure Engineering Inc.**  
Contractor: **Stevens Construction Corp**  
Precaster: **Taracon Precast**  
Precast Specialty Engineer: **Midwest Structure Engineering Inc.**  
PCI Certified Erector: **Wyan Precast Services**  
Location: **Minneapolis, MN**  
Year of Completion: **2021**



  
**TARACON**  
precast  
[www.taraconprecast.com](http://www.taraconprecast.com)