

Highway 55 Corridor Coalition

Resurface Hwy 55 from CR 118 to CSAH 19

Senate Testimony- April 17, 2023

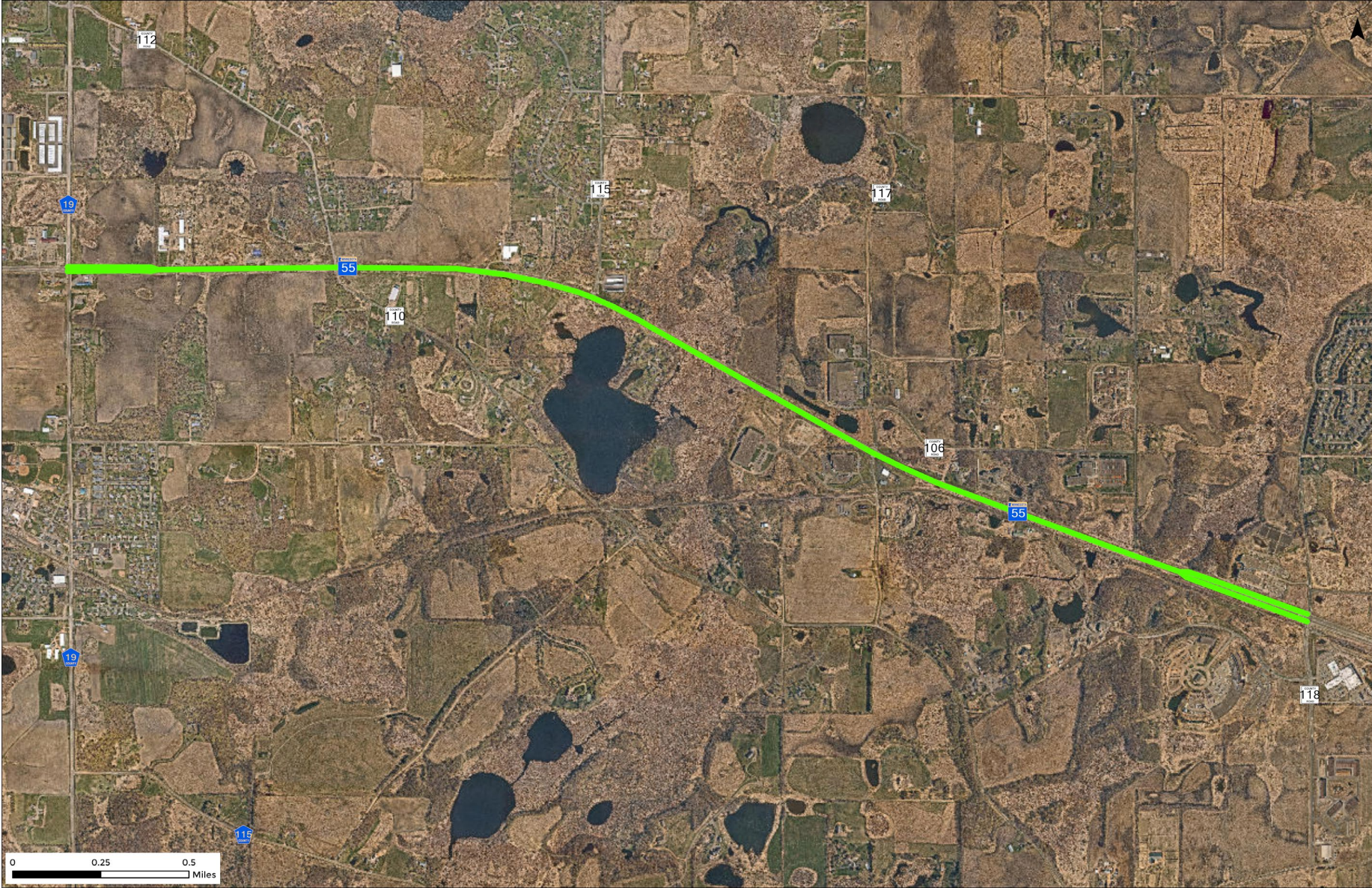


HIGHWAY 55
CORRIDOR COALITION



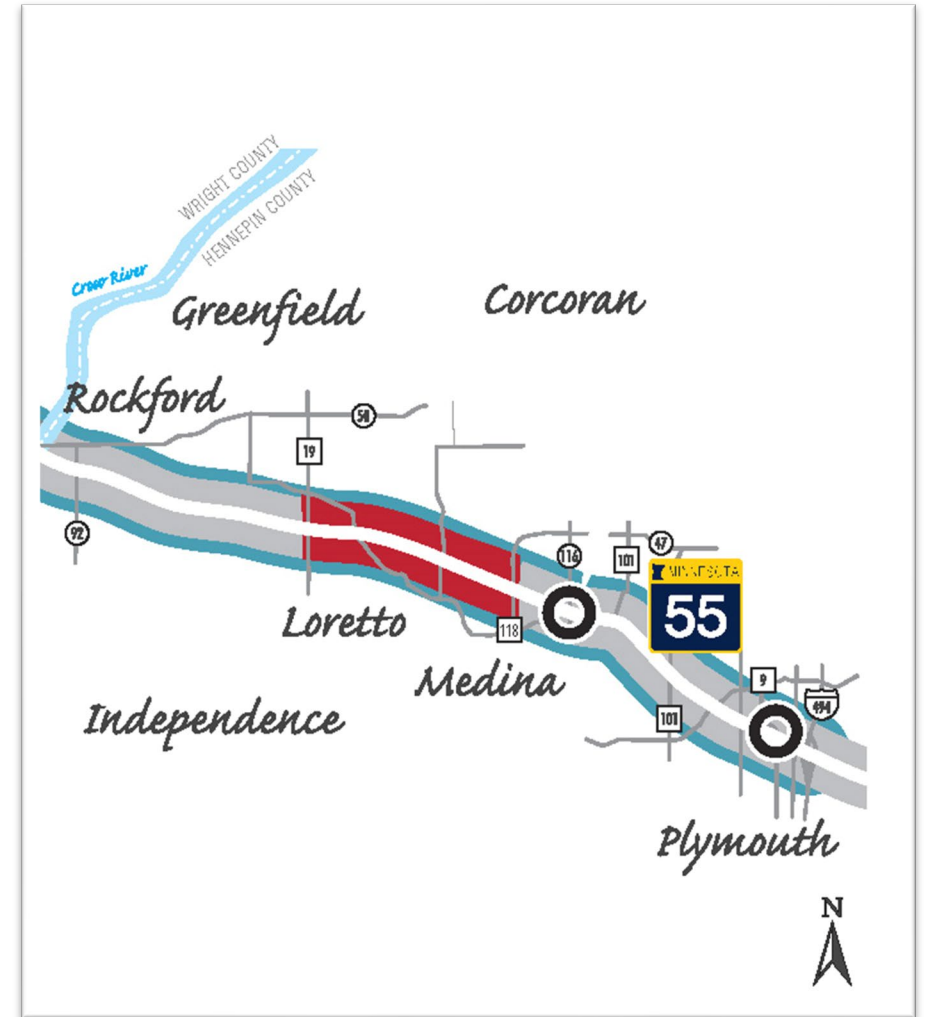
Introductions

Kent Koch – Mayor of Loretto, Chair of the Hwy 55 Corridor Coalition



Resurface Hwy 55 from CR 118 to CSAH 19, with two-lane to four-lane expansion.

- 4 +/- mile project
- Adding an additional lane in each direction
- Center median for safety
- Limited access to improve operations and safety
- Previous environmental document completed
- Bike/Ped enhancement opportunities
- Supports future Bus Rapid Transit on Hwy 55
- Additional capacity for freight and commuters.



Traffic Capacity Issues



- Current annual average daily traffic (AADT) along TH 55 in the project area is 15,800 vehicles per day (2019).
- Heavy commercial volume of 475 vehicles per day (2021).
- This equates to a **volume to capacity ratio of 1.6**, assuming a planning-level capacity for a two-lane undivided roadway of 10,000 vehicles per day.

Highway 55 Safety Concerns:

- Between 2017 and 2021 there were a total of 123 crashes along TH 55 between Arrowhead Drive and CR 19:
 - One fatality
 - One serious injury crash
 - 16 minor injury crashes
 - 16 possible injury crashes.
- A **critical index of 1.55** indicates that the crash rate along this segment of TH 55 is greater than the expected, normal range for similar trunk highways statewide.

Improving Highway 55 Safety:

- The crash rate along this segment of TH 55 is **1.5 times greater** than the expected, normal range for similar trunk highways statewide.
- Adding a median will have a significant reduction in the frequency of crashes.
- Opportunity for safety improvements along the Lake Independence Regional Trail crossing at CSAH 19 / TH 55 intersection.



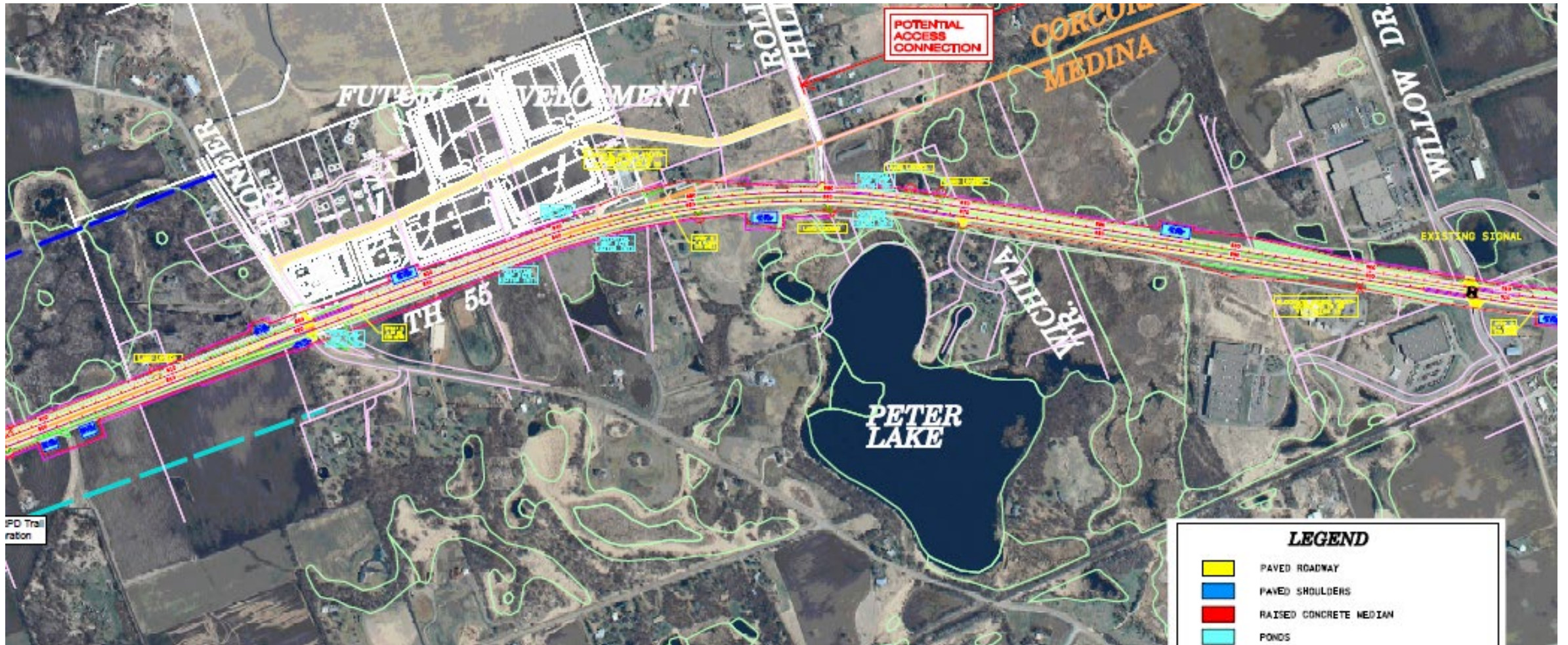
Highway 55 is a Freight and Commuter Corridor:

- TH 55 provides important connections between Hennepin and Wright counties and communities and industries across northwestern Minnesota.
- Majority of vehicle trips for this segment originate in Hennepin or Wright counties; however, over 50 counties served as a destination for trips along this corridor.
- TH 55 was identified as having strong potential for a future Bus Rapid Transit (BRT) service given the high amount of commuter traffic currently using the corridor.

Highway 55 is a Freight and Commuter Corridor:

- Western Hennepin County and Wright County continue to see significant growth and development pressures.
- Supported by communities and organizations across the corridor:
 - City of Medina
 - City of Loretto
 - City of Corcoran
 - City of Independence
 - Hennepin County
 - Wright County
 - Metropolitan Council
 - West Hennepin Chamber of Commerce
 - Three Rivers Park District

Project Layout:



THANK YOU!

On behalf of the Highway 55
Corridor Coalition.

