

Highway 5 Expansion Project

Carver County, Minnesota

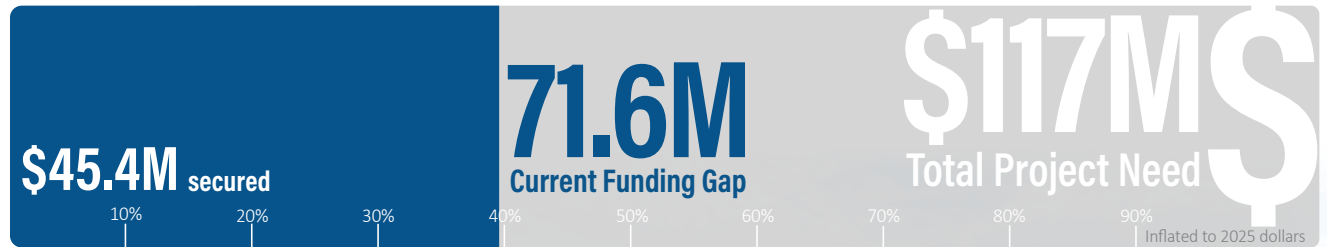
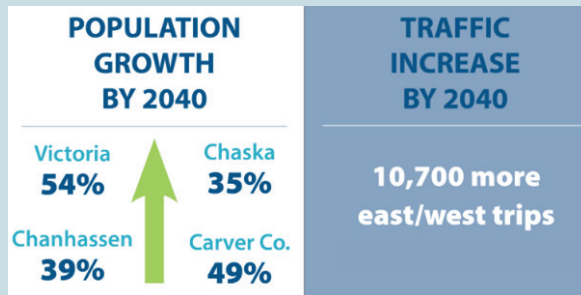
Today's Needs:

- 27,000 vehicles (800 heavy commercial) per day.
- 50% above capacity for existing 2-lane road.
- 180,000+ hours of annual travel delay by 2040.
- 1 fatal and 187 total crashes (2014-2018).
- Crash rate 2.5 times state average.
- Limited pedestrian and bicycle network.

Over the last three years the project partners have been hard at work developing a shared vision to improve safety and mobility for all. We are united and bring forth this project that has been developed by the community through strong engagement and partnerships. We request your support in this investment which allows the region to realize our full potential.



Carver County is the fastest growing county in Minnesota. Completion of the Highway 5 project is critical to support planned growth for jobs and housing in the metropolitan region.



Current Request:

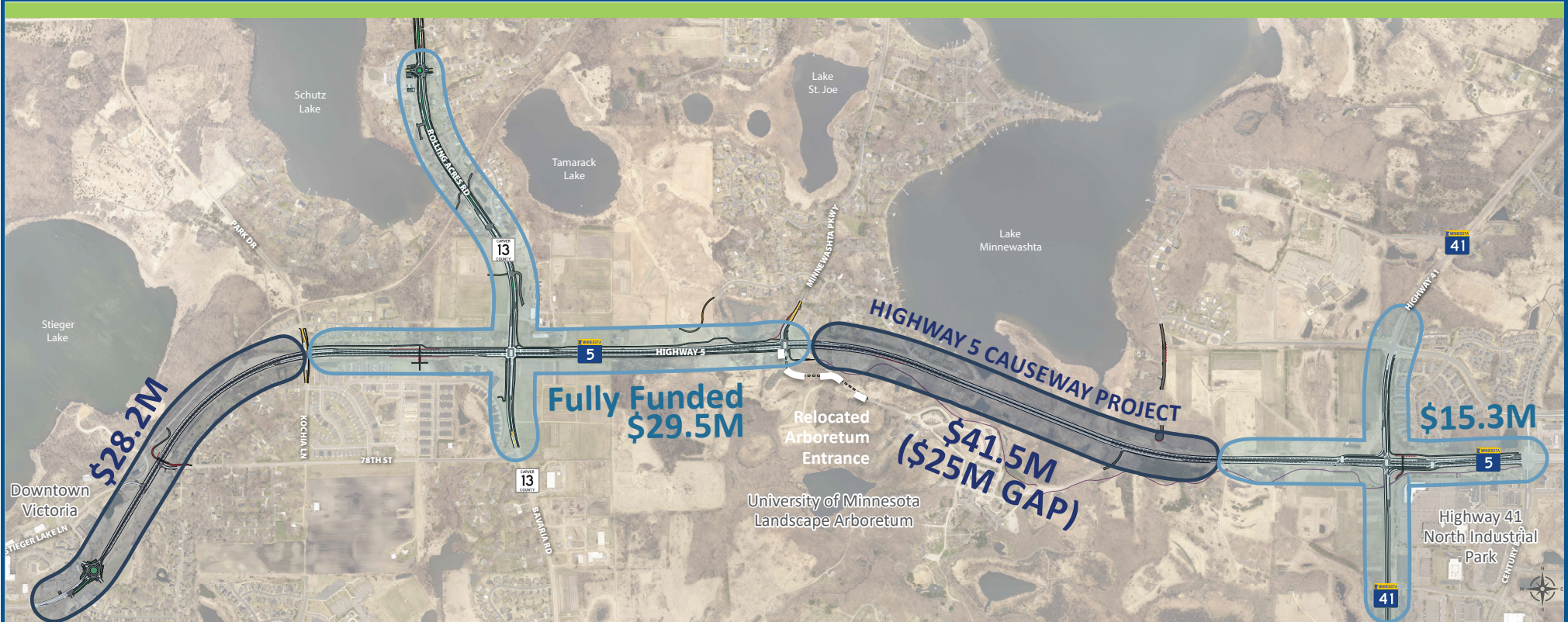
\$25M STATE BONDING BILL
for the Highway 5 Causeway Project.



Artist rendering looking towards the Arboretum with a new 4-lane highway elevated above Lake Minnewashta allowing the lake to be reconnected.



2025 Project Components



One large Highway 5 project saves money and provides benefits:

- The problems today span the entire corridor.
- One project now, reduces the effects of inflation on many smaller projects.
- Constructing the vision in segments will result in impactful closures and bottlenecks over the next decade.
- The cost of inaction is high, with continued crashes and congestion which limit potential growth.



The University of Minnesota Landscape Arboretum is investing over \$100 million in redevelopment that will result in 40 new jobs and 700,000 annual visitors.

