



Metropolitan Council

SF 2438 - Environment Budget recommendations



March 2023

Regional park system



NATURE-BASED SYSTEM PROVIDES SIGNIFICANT GREENSPACE AND WILDLIFE HABITAT



8 SPECIAL RECREATION FEATURES (LIKE COMO PARK ZOO & CONSERVATORY AND GALE WOODS FARM)



56 REGIONAL PARKS AND PARK RESERVES



OVER 415 MILES OF INTERCONNECTED REGIONAL TRAILS



65 MILLION VISITS IN 2021

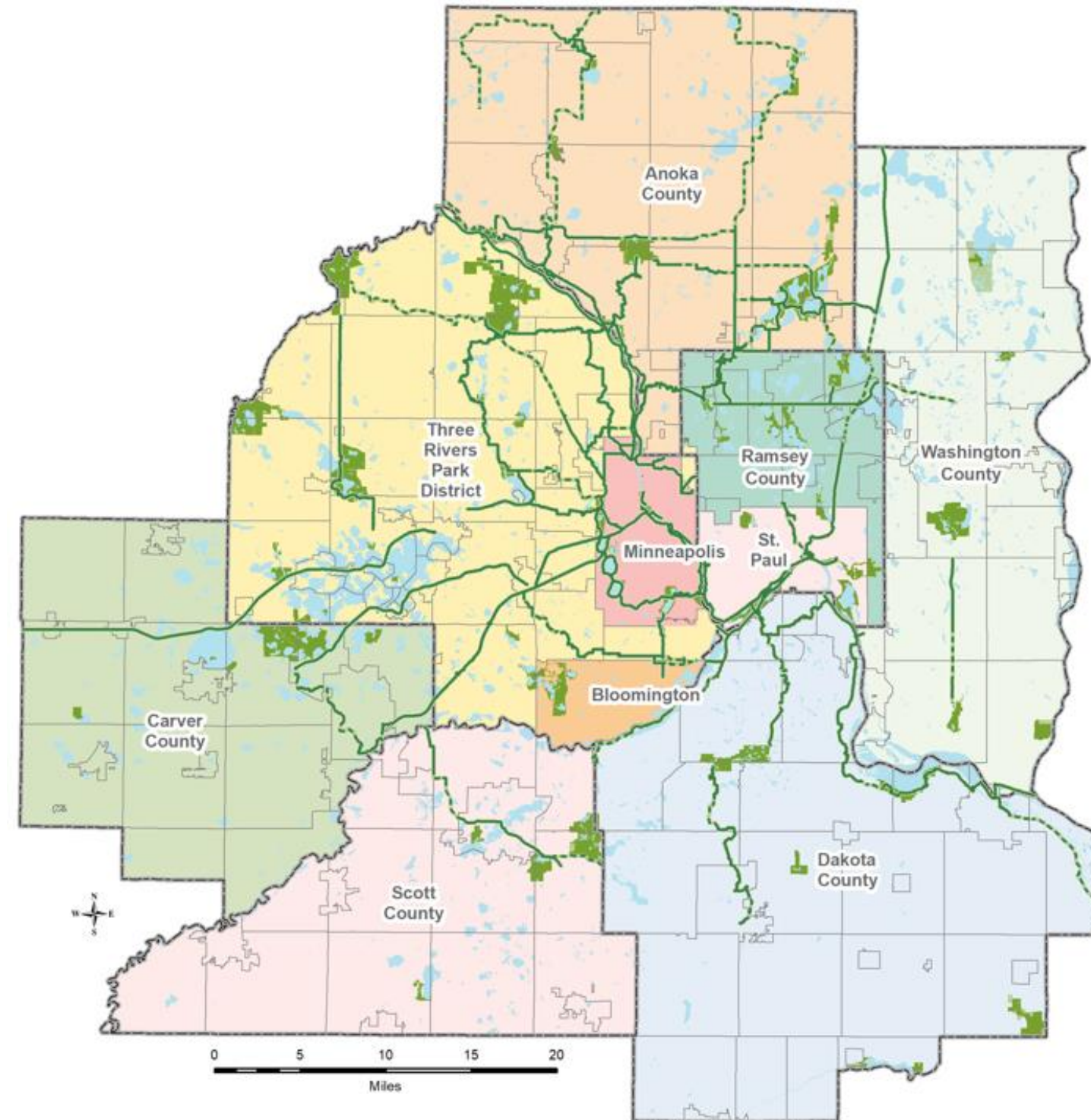


54,500 ACRES OF LAND

Collaboration and cooperation

10 Regional Parks implementing agencies

- Anoka County
- Carver County
- Dakota County
- Ramsey County
- Scott County
- Washington County
- Bloomington
- Minneapolis Park & Recreation Board
- Saint Paul
- Three Rivers Park District



- | | |
|--|------------------------------|
| Regional Parks (Open to the Public) | County Boundaries |
| Regional Parks (Not Open to the Public) | City and Township Boundaries |
| Regional Trails (Open to the Public) | Lakes and Rivers |
| Regional Trails (Not Open to the Public) | |

Modernizing regional parks and trails



Meet the recreational needs for current and future generations

Governor Walz recommends \$12 million in a one-time, general fund appropriation to be matched by \$8 million in Met Council dollars.

This investment would provide \$20 million directly to the 10 regional park implementing agencies that own and operate the regional parks system.

- Renewing facilities and habitats impacted by increasing climate-related events and growing usage
- Increasing accessibility for people who have a disability
- Creating up to date features that are reliable, available, and meet the region's recreational needs

Regional parks and trails operations and maintenance funding



Supporting a world-class parks system

Governor Walz recommends increasing parks operations and maintenance funding by \$2.5 million in general funds for each fiscal year 2024 and 2025. The total allocation would be \$12.49 million per year.

- Well-maintained parks and trails create welcoming spaces that remove barriers, acknowledge history, and advance equity across the region.
- Funds pass through to parks implementing agencies
 - **40%** based on proportion of total regional system visits
 - **40%** based on proportion of total regional system operation and maintenance expenditures in the previous calendar year
 - **20%** based on each agency's proportion of total regional system land acreage

Operations and Maintenance funding sources

Supporting stable operations and maintenance funding for the regional parks system

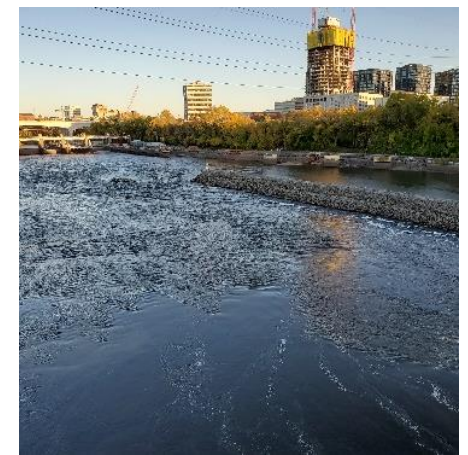
Fund	Base funding	Proposed increase
General Fund	\$2.54 million	\$2.5 million
Lottery-in-Lieu of Taxes	\$7.45 million	
TOTAL (per year)		\$12.49 million

Mapping Infrastructure Climate Risk and Resiliency Opportunities

Safeguarding infrastructure

Governor Walz recommends a \$5 million general fund appropriation to create a web-based planning tool for metro area communities and watersheds to use to protect local infrastructure from the adverse effects of extreme weather events and climate change.

- Improves data and modeling
- Supports climate-smart communities
- Creates healthy community green spaces and water
- Establishes resilient buildings, infrastructure, and business



Integrating data and urging action

Leveraging Knowledge

- Regional spatial datasets
- Water and climate models
- Risk calculations

Offering Solutions

- Adaptation Scorecards
- Recommendations to increase resiliency
- Training and local capacity building

