

Clean Water Fund Recommendations for FY24-25 (SF1682)



Paul Gardner, Administrator

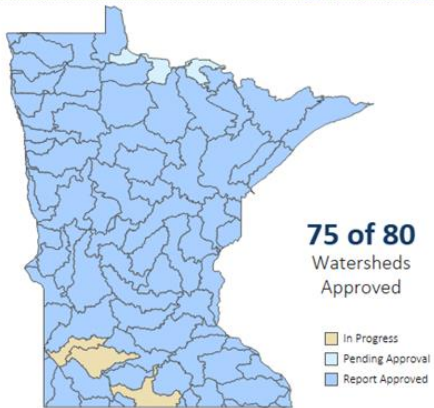
651-757-2384

Paul.Gardner@state.mn.us

March 17, 2023

Senate Environment, Climate & Legacy
Finance Committee





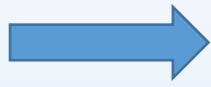
CWF Strategy The Watershed Approach

- **Test waters for impairments**
- **Find source of problem** (Monitoring, assessment & characterization)
- **Make a plan to protect it or fix it** (Watershed/Groundwater Restoration & Protection Strategies-WRAPS/GRAPS; One Watershed One Plan)
- **Fund the fix** (Implementation: Technical assistance, protection strategies, restoration projects, other)
- **Measure to see if the fix worked**

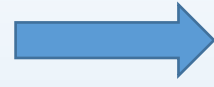
THIS TAKES A DECADE OR MORE ON A WATERSHED SCALE



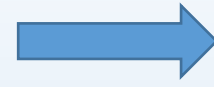
DO THESE PROJECTS



By YEAR



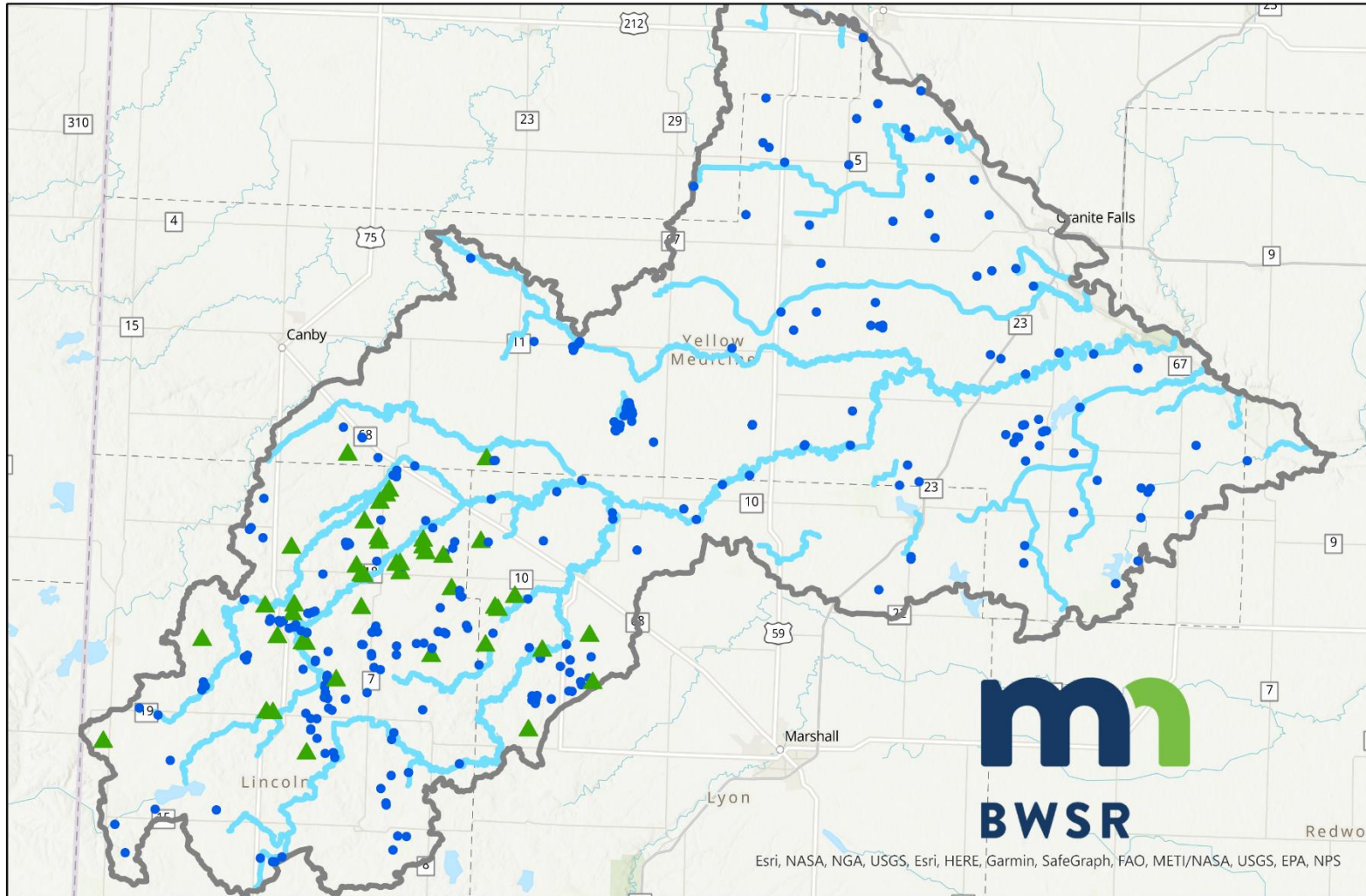
AND YOU GET THESE REDUCTIONS



AND IT WILL COST

Drainage	Treatment Group Type & Number of BMPs	Cost	Issue	Unit	Existing Conditions	Quantitative Measurable Goal				PTMApp Scenario Reduction	5 year Load Reduction Goal	10 year Load Reduction Goal	10 yr. Progress towards Measurable Goal (%)
						Metric	Amount (%)*	Target Load Reduction	Year				
Drainage to Mississippi River	Storage (244) Filtration (78) Infiltration (3) Source Reduction (812)	\$6,437,605	Sediment	tons/yr	116,416	Annual Load (mass/yr.)	45	52,387	2025	14,488	7,244	14,488	28
			Nutrients: Total Nitrogen	lbs/yr	10,848	Annual Load (mass/yr.)	45	4,882	2040	112	56	112	2
			Nutrients: Total Phosphorus	lbs/yr	134	Annual Load (mass/yr.)	45	60	2025	12	6	12	20
			Excess Runoff: 2 Year	acre feet	71,177	2-Yr. Runoff Volume	25	17,794	2030	N/A	N/A	N/A	N/A
			Excess Runoff: 10 Year	acre feet	167,868	2-Yr. Runoff Volume	N/A	N/A	N/A	N/A	N/A	N/A	N/A
Drainage to Upper Iowa River	Storage (44) Filtration (15) Source Reduction (268)	\$1,410,038	Sediment	tons/yr	112,249	Annual Load (mass/yr.)	45	50,512	2025	27,776	13,888	27,776	55
			Nutrients: Total Nitrogen	lbs/yr	32,828	Annual Load (mass/yr.)	45	14,773	2040	3,285	1,642	3,285	22
			Nutrients: Total Phosphorus	lbs/yr	2,024	Annual Load (mass/yr.)	45	911	2025	360	180	360	40
			Excess Runoff: 2 Year	acre feet	7,781	2-Yr. Runoff Volume	25	1,945	2030	N/A	N/A	N/A	N/A
			Excess Runoff: 10 Year	acre feet	17,036	2-Yr. Runoff Volume	N/A	N/A	N/A	N/A	N/A	N/A	N/A

Yellow Medicine River Watershed Planning Area Clean Water Funded Best Management Practices



Yellow Medicine 1W1P Boundary ● CWF
 YM Impaired Streams ▲ CWF WBIF Only

Practice Type	Total Number of Activities*
Septic System Improvement	8
Alternative Tile Intake - Dense Pattern Tiling	33
Alternative Tile Intake - Gravel Inlet	76
Alternative Tile Intake - Other Blind Intake	5
Critical Area Planting	2
Well Decommissioning	57
Diversion	1
Filter Strip	45
Grade Stabilization Structure	2
Grassed Waterway and Swales	17
Streambank and Shoreline Protection	1
Structure for Water Control	1
Denitrifying Bioreactor	1
Water and Sediment Control Basin	69
Wetland Restoration	1
Wetland Creation	1
Grand Total	320

*Note: Number of practices maybe greater as treatment trains of BMPs grouped together

- 2017: Comprehensive Watershed Management Plan Complete
- 2018-2023: Three major grants (green triangles)
- 2021: Monitoring 2nd cycle



Thank you!

