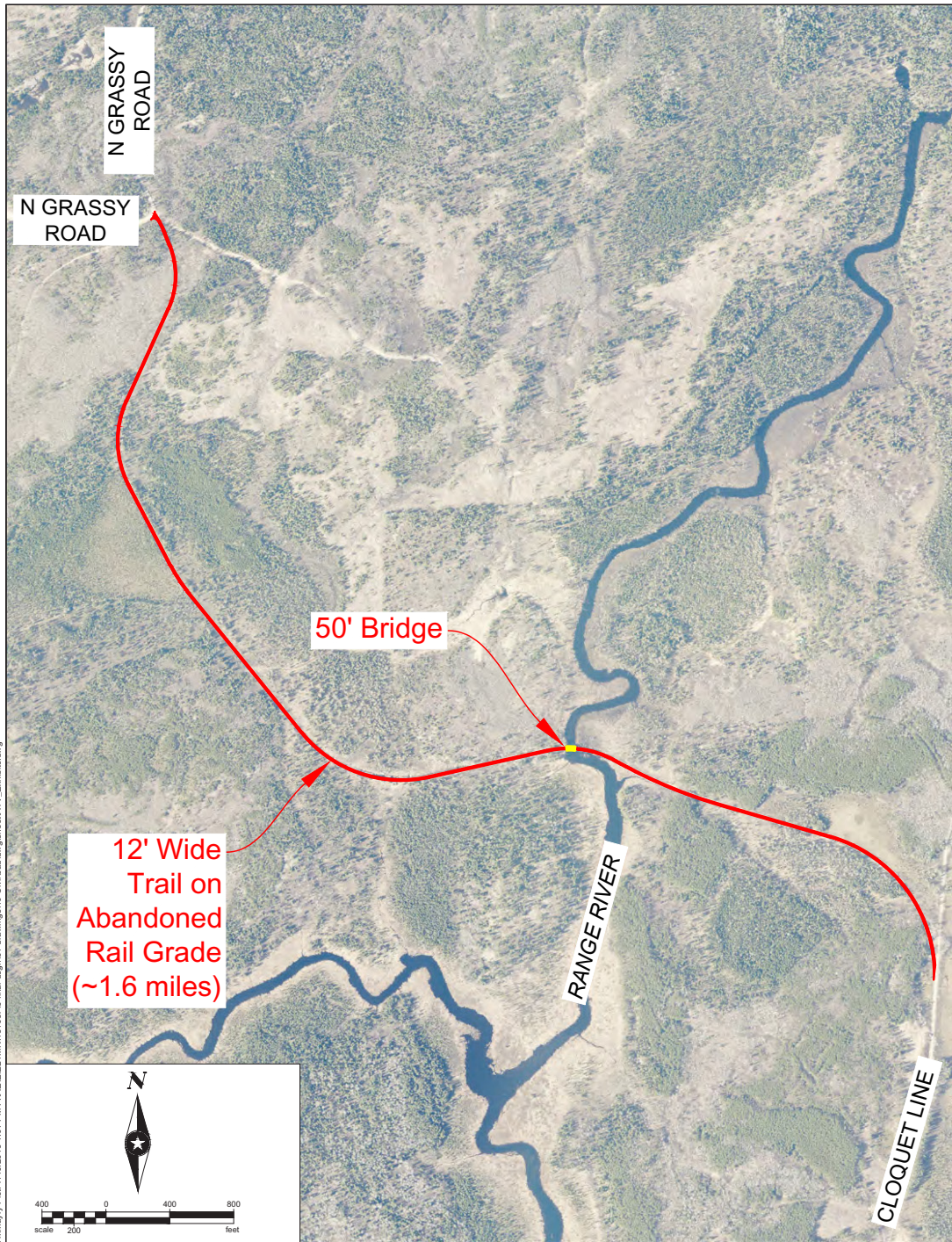


# PROSPECTOR ATV CLUB

## \$700,000 Request Exhibit 1 - Cloquet Line to Echo Trail

This 1.6 mile trail segment will join the Cloquet Line to the Echo Trail, both are currently open to ATVs. We are going to repurpose a bridge over the Range River that previously was on federal land south of Ely. The Forest Service has allowed us to hold on to that bridge to be used to cross the Range River.

Estimated cost: \$837,500



Save: 7/16/2019 12:41 PM \\mymy\pict\7/16/2019 1:01 PM P:\A\B\EL\YMN\1516376-feat-dgms\51-drawings\10-Cloquet-to-echo-trail\ATV\_Exhibits.dwg



FILE NO. ELYMN 151637	<b>CLOQUET LINE TO N GRASSY LAKE ROAD ATV TRAIL EXHIBIT</b>	<b>EXHIBIT NO. 1</b>
DATE: 7/16/2019		

## \$700,000 Request Exhibit 2 - Bear Run

This 12.5 mile trail segment will connect the Taconite Trail to the Wolf Lake and Mud Creek roads and open up hundreds of acres of woods and lakes for access by ATVers. Much of this is St. Louis County land and former Commissioner and State Representative Tom Rukavina was a big supporter of this project.

Estimated cost: \$556,700

