



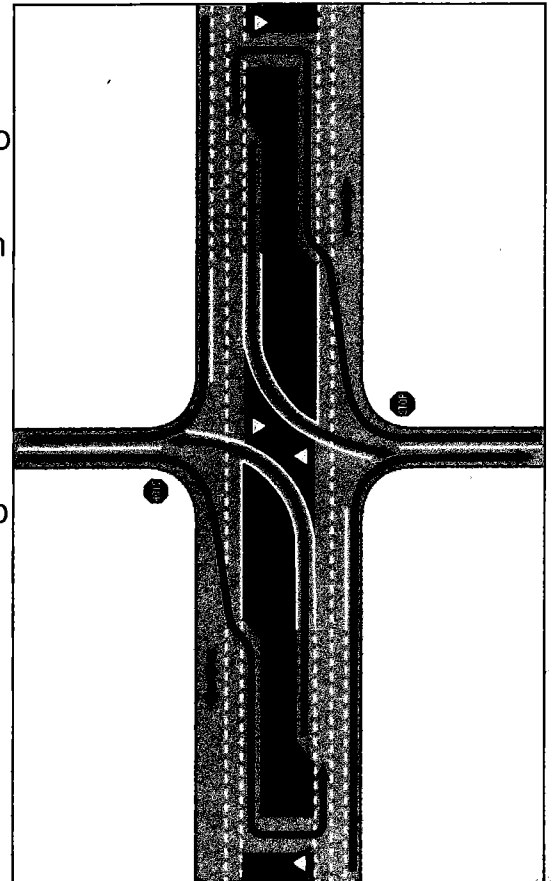
Indiana Department of Transportation **Reduced Conflict Intersections**

🔊 [Sea](#) 🔍
🏠 [INDOT](#) > [Traffic Engineering](#) > [Reduced Conflict Intersections](#)

The Reduced Conflict Intersection (RCI) is an alternative to traditional roadway intersections on a four-lane highway. Instead of motorists crossing fast-moving lanes of traffic to get to the opposing lanes, drivers at a RCI turn right in the same direction of traffic, merge into the left lane, and then make a U-turn in the direction they intend to travel.

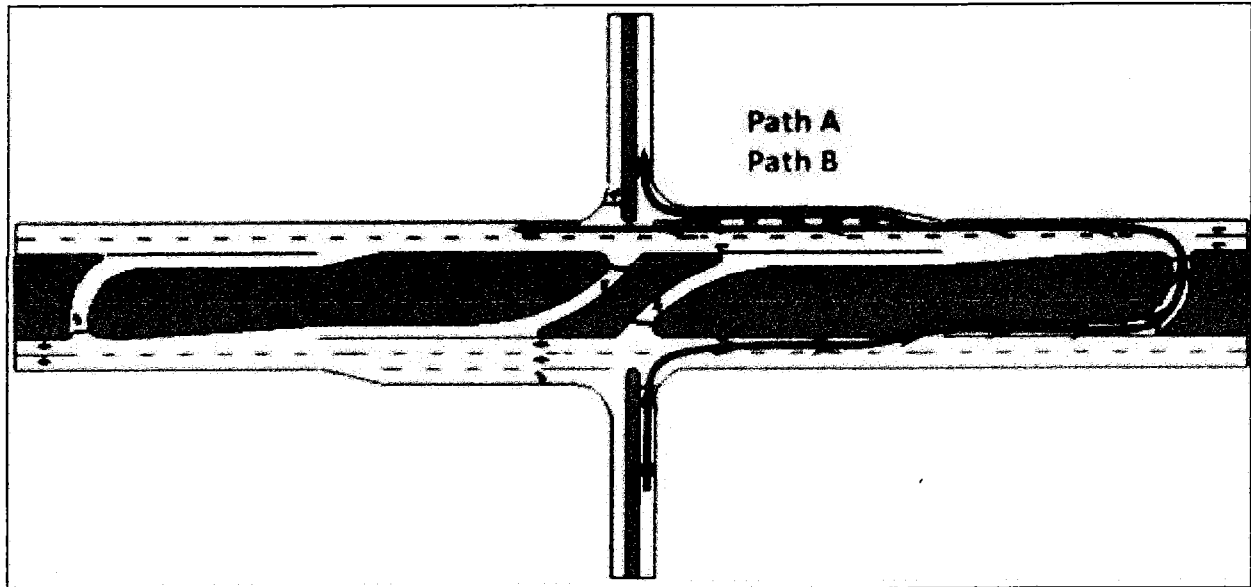
Although drivers will have to travel slightly further to get where they want to go, using RCIs can take the same or less time than trying to wait for a safe and appropriate gap to cross traffic. RCIs also are designed to fully accommodate the wide turning radius of tractor-trailer trucks and other large vehicles, such as school buses.

The point of a RCI is to greatly reduce - or even eliminate - a significant number of severe crashes common when drivers must cross-over busy highways to reach another road.



In the RCI design, drivers turn right in the same direction of traffic, and merge safely into the left lane to prepare to make a left turn in the direction they intend to travel. This option uses an extended deceleration lane, basically adding a third lane on the highway to enable traffic making a left turn onto opposing lanes to safely pull off the main line, out of the way of high-speed traffic. Also, acceleration lanes may be constructed to allow traffic an opportunity to gain speed after turning onto the highway.

MENU



A J-Turn, or reduced conflict intersection, is a u-turn type intersection installed on divided highways (expressways). A J-Turn requires vehicles on the side street intending to cross a divided highway or make a left turn onto the divided highway to use the u-turns installed in the divided highway median. Vehicles on the divided highway can still make a left turn or right turn at the intersection as normal.

The most common type of serious crash at a divided highway intersection is a right-angle (T-bone) crash on the far side of the intersection (as viewed from the perspective of the driver crossing the divided highway). Unfortunately, these crashes almost always result in serious injuries and even death. A traditional divided highway intersection has 30 conflict points of which eight (8) conflict points are right-angle type conflicts. A J-Turn has 24 conflict points and no right-angle type conflicts.

Source: St. Louis County, MN. <https://www.stlouiscountymn.gov/departments-a-z/public-works/traffic/intersections/j-turn-intersection#:~:text=A%20J%2DTurn%2C%20or%20reduced,in%20the%20divided%20highway%20median>
 Submitted by Minnesota United Snowmobilers Association