




# Minnesota Board of Water and Soil Resources (BWSR)

Senate Environment, Climate, and Legacy Committee

Jan 17, 2023

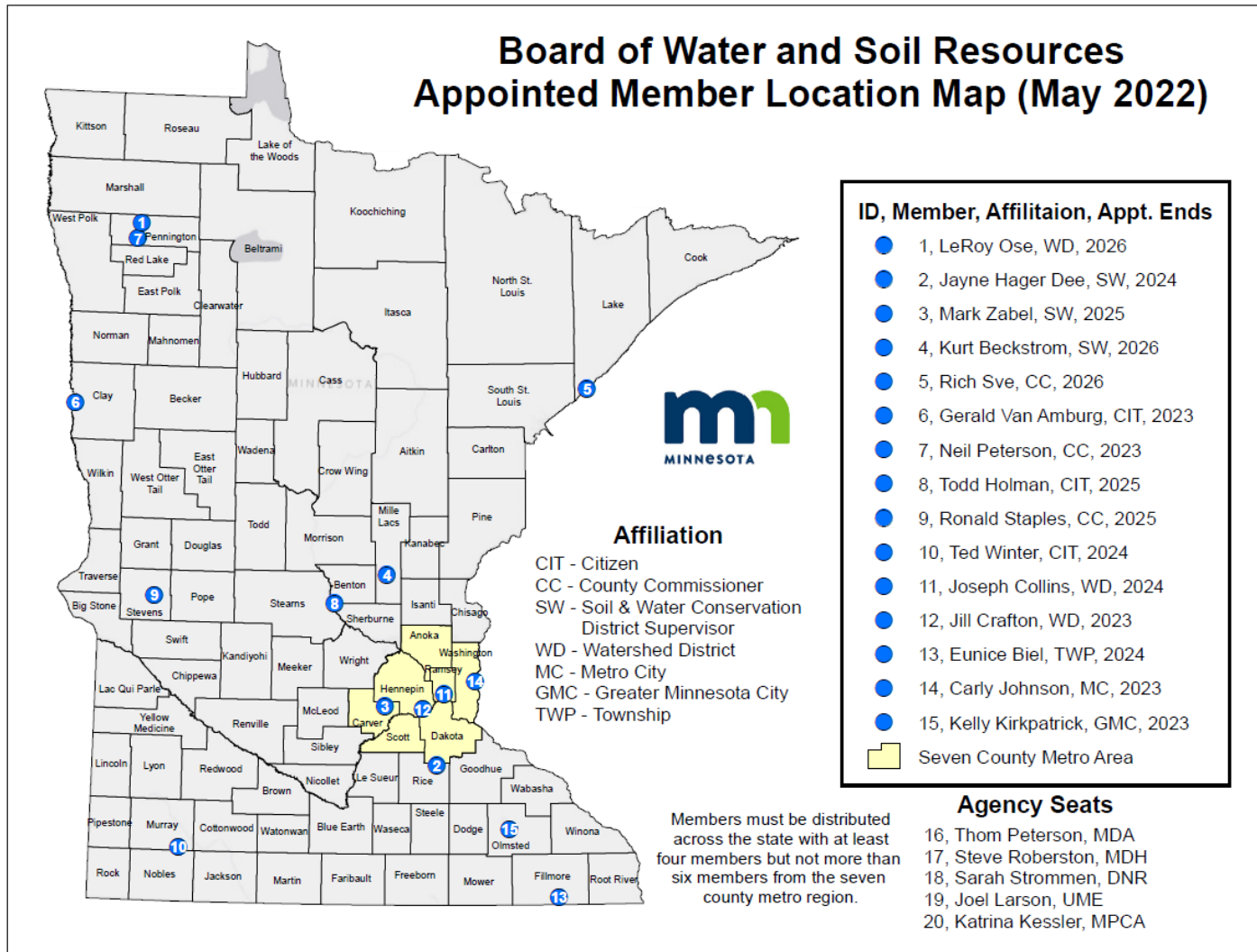
**John Jaschke, Executive Director**  
**Andrea Fish, Assistant Director**

# Our Mission

A wide-angle photograph of a wetland or marsh area. In the foreground, tall, thin grasses with some brown seed heads are visible on the left side. The middle ground is dominated by a body of water, likely a pond or a slow-moving stream, which reflects the sky and the surrounding vegetation. The background consists of a dense line of tall grasses or reeds stretching across the horizon. The sky is filled with soft, white and grey clouds, suggesting an overcast or late afternoon setting. The overall color palette is dominated by blues, greens, and earthy tones.

Improve and protect Minnesota's water and soil resources by working in partnership with local organizations and private landowners.

# BWSR Structure



## Governor-Appointed 20-member board:

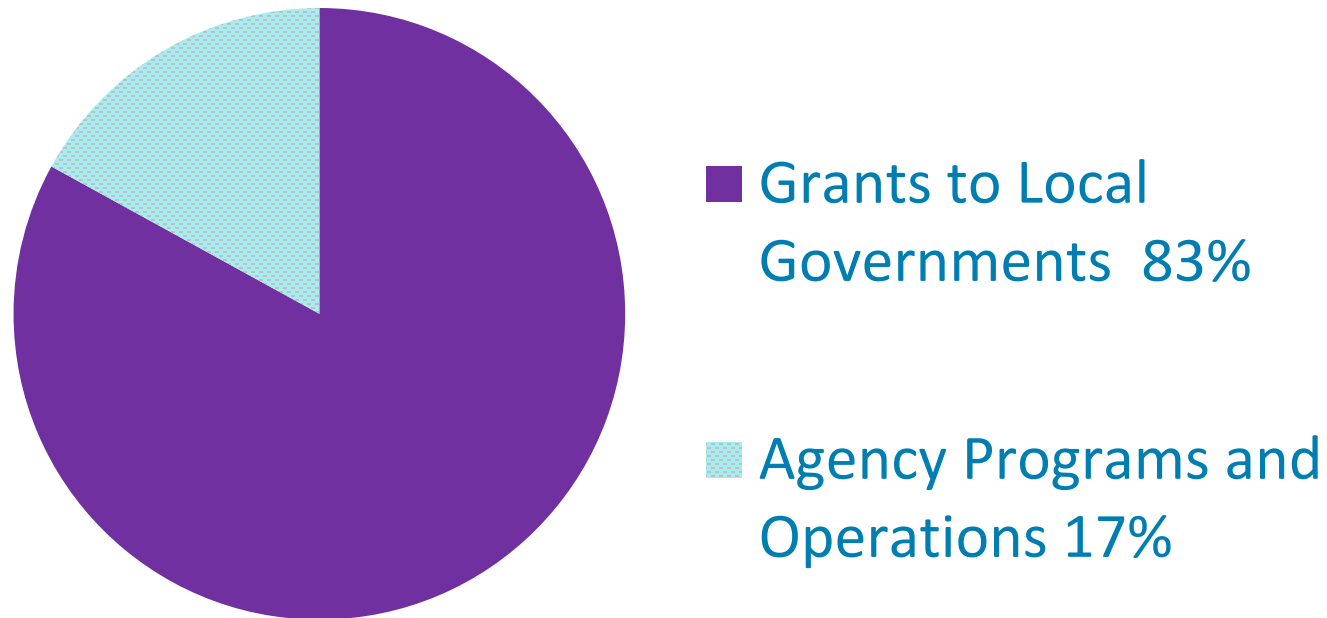
- Local Govts
- Citizens
- State Agencies

# Who We Work With

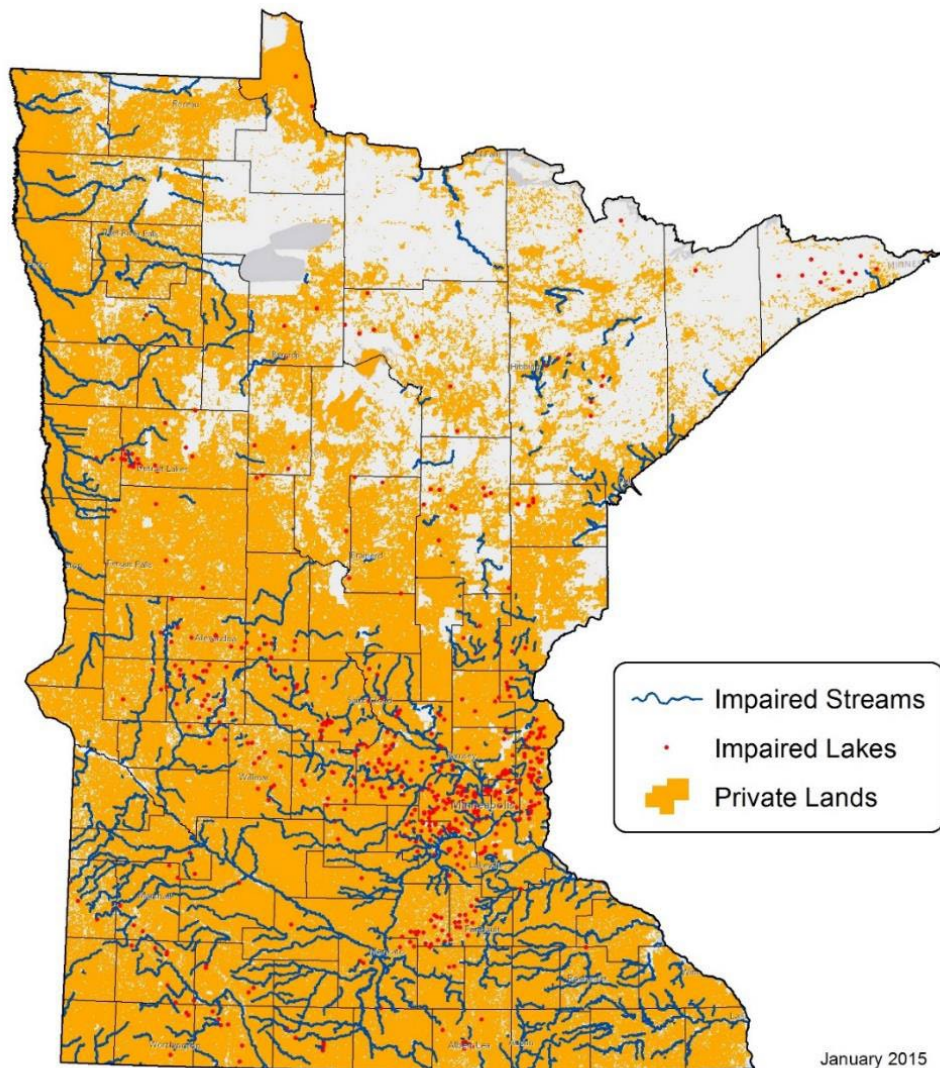
- **88** Soil and Water Conservation Districts
- **45** Watershed Districts
- **87** Counties
- Joint Powers Organizations
- State and Federal agencies
- Agricultural and Environmental NGOs
- Tribal Governments



- Local government delivery system (1000 +)
- On-the-ground conservation results



# Partnership with Private Landowners



January 2015

- 76% of Minnesota's lands are privately-held
- Many of our programs directly impact privately held land of all sizes – farms, utilities, and residences.
  - **RIM** Reserve Conservation Easement Program has successfully restored and protected more than 300,000 acres of private lands over the past 30 years
  - One of our most popular programs, **Lawns to Legumes**, focuses on residential properties and neighborhoods

# Statutory Authorities

- 12A – [Natural Disaster, State Assistance](#)
- 103A – [Water Policy and Information](#)
- 103B – [Water Planning and Project Implementation](#)
- 103C – [Soil and Water Conservation Districts](#)
- 103D – [Watershed Districts](#)
- 103E – [Drainage](#)
- 103F – [Protection of Water Resources](#)
- 103G – [Waters/Wetlands](#)
- 103H – [Groundwater Protection](#)
- 114D – [Clean Water Legacy Act](#)

# Local Government Roads Wetland Replacement Program



- Larger, higher-quality wetland mitigation
- More cost-efficient
- Expedited permitting





# Climate Action Framework Goals

## BWSR Focus Areas

### Framework Goals



Clean  
transportation



**Climate-smart  
natural &  
working lands**



**Resilient  
communities**



Clean energy &  
efficient buildings



Healthy lives &  
communities



Clean economy

# Soil Health Practices Program

Climate Action Framework



- Establishes a voluntary and locally-driven Soil Health Practices Program.
- Sets practices on sensitive lands to slow water and nutrient movement.
- Mitigates climate change impacts through carbon sequestration.

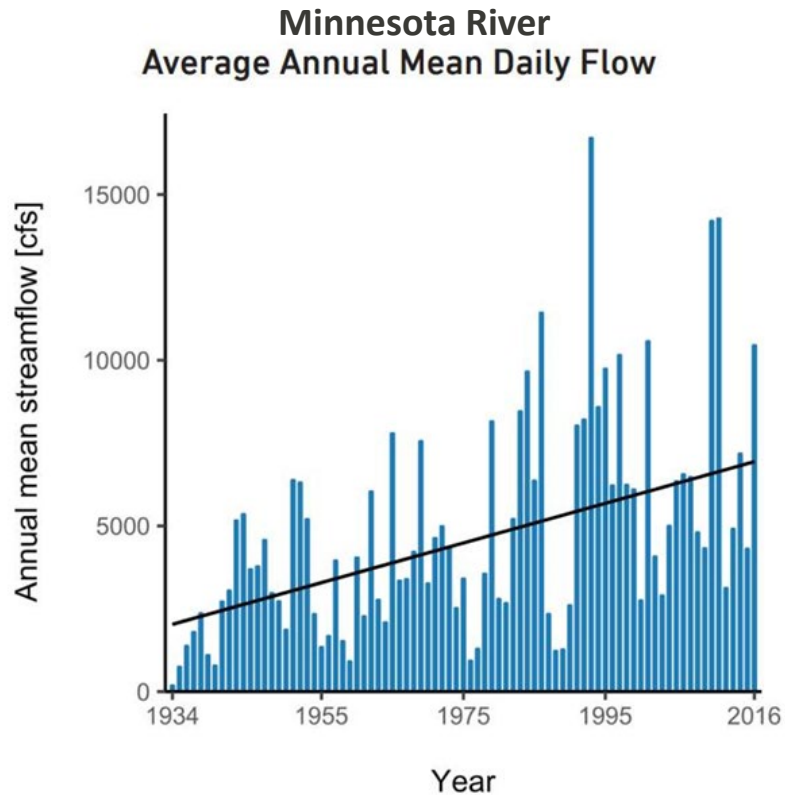
# Examples - Soil Health Practices



# Accelerated Water Storage Program

Climate Action Framework

- Adapt to changing climate
- Acquire, design, and construct projects to control water volume and rate
- Voluntary and locally-led



# Habitat Enhancement Landscape Program (HELP)

Climate Action Framework



- Encourage individual actions that increase carbon storage and establish landscapes to conserve and enhance biodiversity.
- Build on successful ENRTF one-time pilots that create pollinator habitat statewide

**Lawns to Legumes**

**Habitat Friendly Utilities Program**

**Habitat Enhancement Landscape Pilot**

# Private Lands Conservation Easements for Carbon Sequestration

## Climate Action Framework

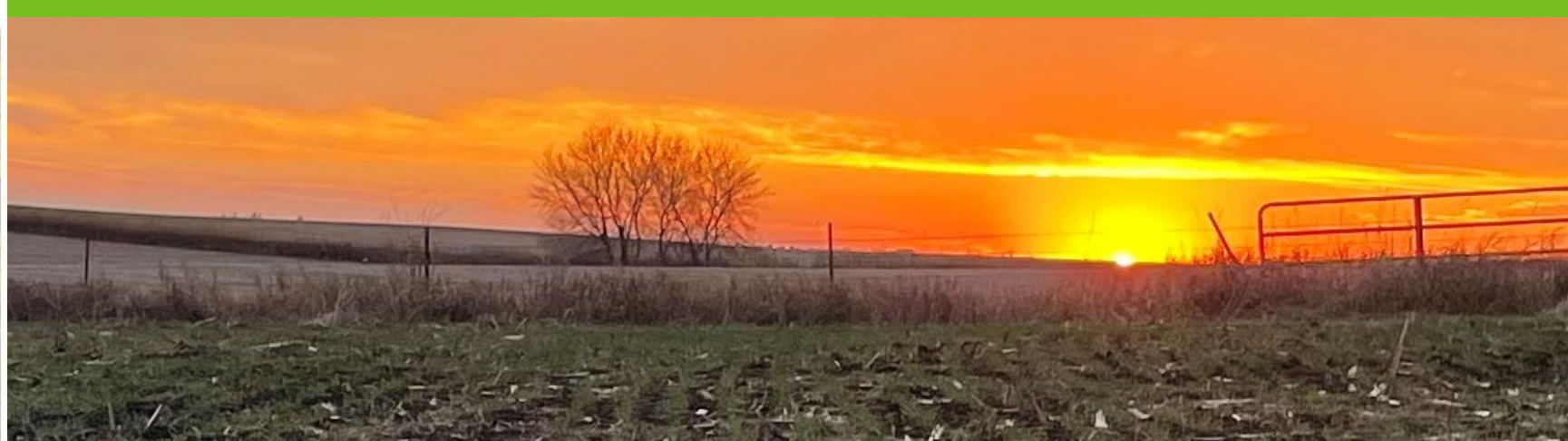


## Climate Action via the Reinvest in Minnesota (RIM) Reserve Program

- Grassland/Working Land Restorations
- Peatland Restorations
- Mitigation and Resiliency for Existing State Easements

# Federal Inflation Reduction Act of 2022 (IRA)

## USDA-NRCS Climate Conservation Funding



	IRA funding in millions					
	Current- '22	2023	2024	2025	2026	IRA total
EQIP	\$ 1,800	\$ 250	\$ 1,750	\$ 3,000	\$ 3,450	\$ 8,450
CSP	\$ 800	\$ 250	\$ 500	\$ 1,000	\$ 1,500	\$ 3,250
RCPP	\$ 300	\$ 250	\$ 800	\$ 1,500	\$ 2,400	\$ 4,950
ACEP	\$ 450	\$ 100	\$ 200	\$ 500	\$ 600	\$ 1,400



# MNCREP

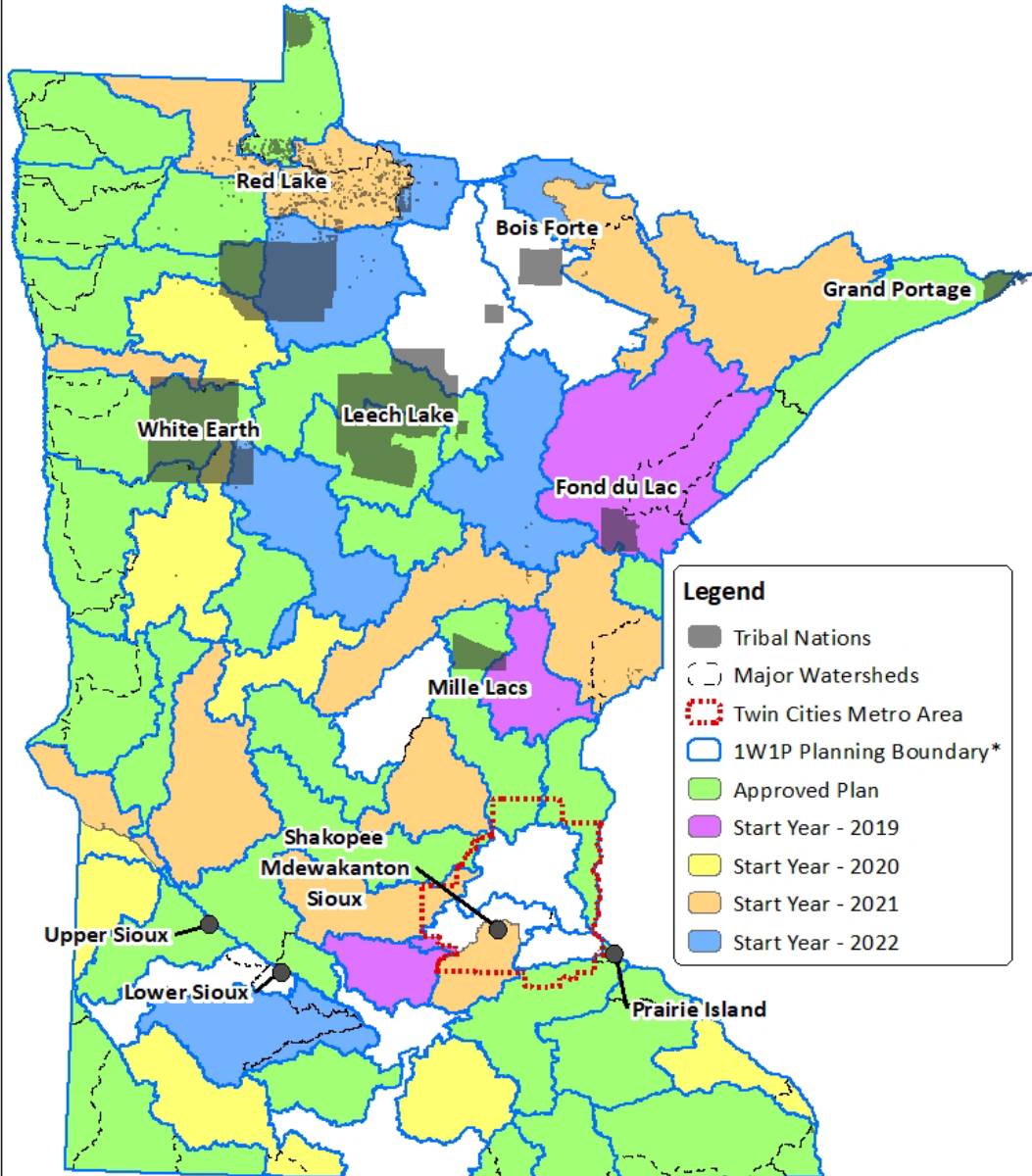


- State-held easements
- Voluntary and locally-driven
- Targeted to env. sensitive areas
- Permanent protection, local ownership
- Federal leverage up to \$350 million (with state match)
- Completes the state's contribution



# Watershed-Based Approach to Resource Management

## One Watershed One Plan Participating Watersheds



## LEECH LAKE RIVER WATERSHED COMPREHENSIVE WATERSHED MANAGEMENT PLAN

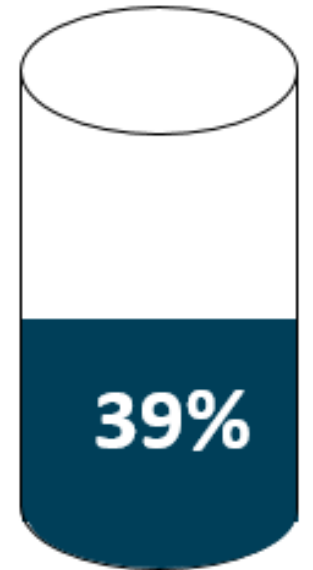


Woods, water, wildlife, and people:  
A healthy watershed and a vibrant economy

# Lake McCarron Protection: Upper Villa Park Volume Reduction and Stormwater Reuse



**Projected Pollution  
Reduction:  
Phosphorus (45 lbs/yr)**



Progress  
towards goal



# Grand Marais Outlet Project and Cut Channel Stabilization

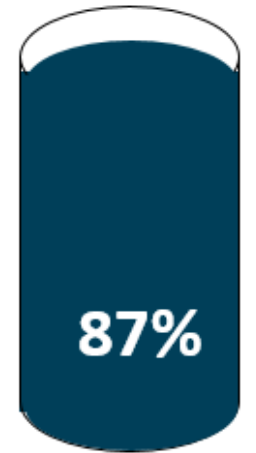


*“The amendment was the catalyst we needed to move forward. This is our legacy.”*



637 tons of sediment annually kept from entering the Red River.

100%  
80%  
60%  
40%  
20%  
10%  
0%



Progress towards goal

**John Jaschke**

Executive Director

[john.jaschke@state.mn.us](mailto:john.jaschke@state.mn.us)

612-202-3815

**Andrea Fish**

Assistant Director

[andrea.fish@state.mn.us](mailto:andrea.fish@state.mn.us)

612-616-5112

**Michael Nelson**

Legislative Coordinator

[michael.nelson@state.mn.us](mailto:michael.nelson@state.mn.us)

651-539-2598