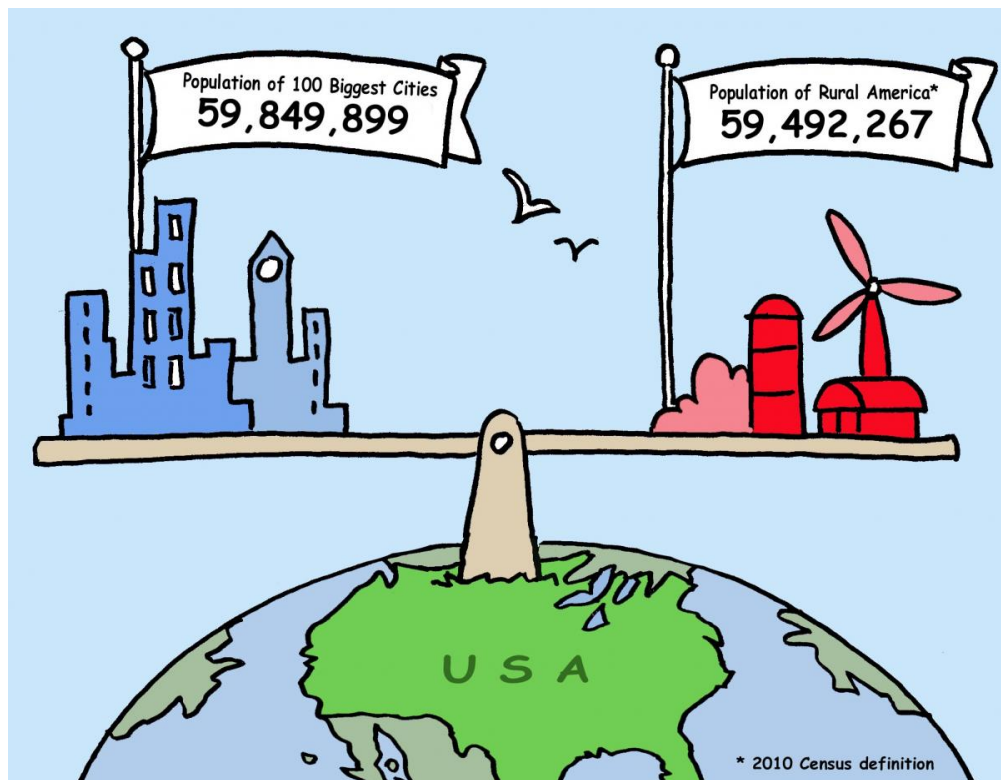


State status: [AK \(/state/ak\)](#) [AL \(/state/al\)](#) [AR \(/state/ar\)](#) [AZ \(/state/az\)](#) [CA \(/state/ca\)](#) [CO \(/state/co\)](#) [CT \(/state/ct\)](#) [DC \(/state/dc\)](#) [DE \(/state/de\)](#) [FL \(/state/fl\)](#) [GA \(/state/ga\)](#) [HI \(/state/hi\)](#) [IA \(/state/ia\)](#) [ID \(/state/id\)](#) [IL \(/state/il\)](#) [IN \(/state/in\)](#) [KS \(/state/ks\)](#) [KY \(/state/ky\)](#) [LA \(/state/la\)](#) [MA \(/state/ma\)](#) [MD \(/state/md\)](#) [ME \(/state/me\)](#) [MI \(/state/mi\)](#) [MN \(/state/mn\)](#) [MO \(/state/mo\)](#) [MS \(/state/ms\)](#) [MT \(/state/mt\)](#) [NC \(/state/nc\)](#) [ND \(/state/nd\)](#) [NE \(/state/ne\)](#) [NH \(/state/nh\)](#) [NJ \(/state/nj\)](#) [NM \(/state/nm\)](#) [NV \(/state/nv\)](#) [NY \(/state/ny\)](#) [OH \(/state/oh\)](#) [OK \(/state/ok\)](#) [OR \(/state/or\)](#) [PA \(/state/pa\)](#) [RI \(/state/ri\)](#) [SC \(/state/sc\)](#) [SD \(/state/sd\)](#) [TN \(/state/tn\)](#) [TX \(/state/tx\)](#) [UT \(/state/ut\)](#) [VA \(/state/va\)](#) [VT \(/state/vt\)](#) [WA \(/state/wa\)](#) [WI \(/state/wi\)](#) [WV \(/state/wv\)](#) [WY \(/state/wy\)](#)

The 100 Biggest Cities Have 59,849,899 People, and the Rural Areas Have 59,492,267 People



Many people think that the big cities of the United States are bigger than they are, or that the rural areas of the country are smaller than they are.

The 100 biggest cities in the United States have, according to the 2010 census, [59,849,899 people](https://en.wikipedia.org/wiki/List_of_United_States_cities_by_population) (https://en.wikipedia.org/wiki/List_of_United_States_cities_by_population) (19.32% of the U.S. population of 308,745,538).

This number is almost identical to the rural population of the United States, as defined by the U.S. Census Bureau, of [59,492,267 people](https://www.census.gov/programs-surveys/geography/guidance/geo-areas/urban-rural/2010-urban-rural.html) (<https://www.census.gov/programs-surveys/geography/guidance/geo-areas/urban-rural/2010-urban-rural.html>) (19.27% of the U.S. population). [Another article](https://www.census.gov/library/stories/2017/08/rural-america.html) (<https://www.census.gov/library/stories/2017/08/rural-america.html>).

	City	Population	
1	New York, NY	8,175,133	Biggest city is 2.6% of U.S. population
2	Los Angeles, CA	3,792,621	Top 2 cities are 3.8% of U.S. population
3	Chicago, IL	2,695,598	Top 3 cities are 4.7% of U.S. population
4	Houston, TX	2,099,451	Top 4 cities are 5.4% of U.S. population
5	Philadelphia, PA	1,526,006	Top 5 cities are 5.9% of U.S. population
6	Phoenix, AZ	1,445,632	Top 6 cities are 6.4% of U.S. population
7	San Antonio, TX	1,327,407	Top 7 cities are 6.8% of U.S. population
8	San Diego, CA	1,307,402	Top 8 cities are 7.2% of U.S. population

9	Dallas, TX	1,197,816	Top 9 cities are 7.6% of U.S. population
10	San Jose, CA	945,942	Top 10 cities are 7.91% of U.S. population
11	Jacksonville, FL	821,784	
12	Indianapolis, IN	820,445	
13	San Francisco, CA	805,235	
14	Austin, TX	790,390	
15	Columbus, OH	787,033	
16	Fort Worth, TX	741,206	
17	Charlotte, NC	731,424	
18	Detroit, MI	713,777	
19	El Paso, TX	649,121	
20	Memphis, TN	646,889	
21	Baltimore, MD	620,961	
22	Boston, MA	617,594	
23	Seattle, WA	608,660	
24	Washington, DC	601,723	
25	Nashville-Davidson, TN	601,222	Top 25 cities are 11.3% of U.S. population
26	Denver, CO	600,158	
27	Louisville/Jefferson, KY	597,337	
28	Milwaukee, WI	594,833	
29	Portland, OR	583,776	
30	Las Vegas, NV	583,756	
31	Oklahoma City, OK	579,999	
32	Albuquerque, NM	545,852	
33	Tucson, AZ	520,116	
34	Fresno, CA	494,665	
35	Sacramento, CA	466,488	
36	Long Beach, CA	462,257	
37	Kansas City, MO	459,787	
38	Mesa, AZ	439,041	
39	Virginia Beach, VA	437,994	
40	Atlanta, GA	420,003	
41	Colorado Springs, CO	416,427	
42	Omaha, NE	408,958	
43	Raleigh, NC	403,892	

44	Miami, FL	399,457	
45	Cleveland, OH	396,815	
46	Tulsa, OK	391,906	
47	Oakland, CA	390,724	
48	Minneapolis, MN	382,578	
49	Wichita, KS	382,368	
50	Arlington, TX	365,438	Top 50 cities are 15.1% of U.S. population
51	Bakersfield, CA	347,483	
52	New Orleans, LA	343,829	
53	Honolulu, HI	337,256	
54	Anaheim, CA	336,265	
55	Tampa, FL	335,709	
56	Aurora, CO	325,078	
57	Santa Ana, CA	324,528	
58	St. Louis, MO	319,294	
59	Pittsburgh, PA	305,704	
60	Corpus Christi, TX	305,215	
61	Riverside, CA	303,871	
62	Cincinnati, OH	296,943	
63	Lexington-Fayette, KY	295,803	
64	Anchorage municipality, AK	291,826	
65	Stockton, CA	291,707	
66	Toledo, OH	287,208	
67	St. Paul, MN	285,068	
68	Newark, NJ	277,140	
69	Greensboro, NC	269,666	
70	Buffalo, NY	261,310	
71	Plano, TX	259,841	
72	Lincoln, NE	258,379	
73	Henderson, NV	257,729	
74	Fort Wayne, IN	253,691	
75	Jersey, NJ	247,597	
76	St. Petersburg, FL	244,769	
77	Chula Vista, CA	243,916	
78	Norfolk, VA	242,803	

79	Orlando, FL	238,300	
80	Chandler, AZ	236,123	
81	Laredo, TX	236,091	
82	Madison, WI	233,209	
83	Winston-Salem, NC	229,617	
84	Lubbock, TX	229,573	
85	Baton Rouge, LA	229,493	
86	Durham, NC	228,330	
87	Garland, TX	226,876	
88	Glendale, AZ	226,721	
89	Reno, NV	225,221	
90	Hialeah, FL	224,669	
91	Chesapeake, VA	222,209	
92	Scottsdale, AZ	217,385	
93	North Las Vegas, NV	216,961	
94	Irving, TX	216,290	
95	Fremont, CA	214,089	
96	Irvine, CA	212,375	
97	Birmingham, AL	212,237	
98	Rochester, NY	210,565	
99	San Bernadino, CA	209,924	
100	Spokane, WA	208,916	Top 100 cities are 19.32% of U.S. population
	Total	59,849,899	

- **The national popular vote winner should become President**
- **One-person, one-vote**
- **Candidates should have a reason to campaign in all 50 states**