

CITY OF OSSEO

LIFT STATIONS IMPROVEMENT PROJECT

PROJECT INFORMATION

In 2020, Osseo’s City Council authorized WSB to prepare a lift station condition assessment report. The report evaluated the condition and recommended improvements for the City’s three sanitary lift stations. The lift stations are pumping stations that convey wastewater from a lower to higher elevation so it can continue to flow by gravity to regional treatment facilities. All three lift stations were originally constructed in 1960, and no significant improvements or upgrades have been performed since then, with the exception of minor pump repairs and replacements as needed.

The condition assessment identified the need for the following improvements:

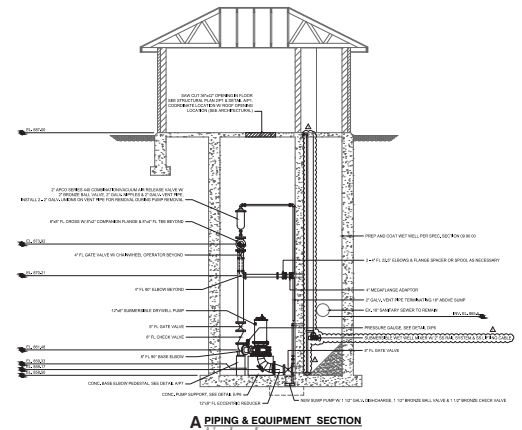
- Lift Station No. 1:** Replace the dry-pit submersible pumps, sump pump, piping, fittings, and valves. Install a protective coating and a mixer in the wet well. Replace the roof and construct a dividing wall inside the building to create a separate electrical room. Replace the electrical and mechanical equipment. Install a bypass valve vault south of the existing building.
- Lift Station Nos. 2 and 3:** Replace the submersible pumps, piping, fittings, valves, and wet well cover slab and hatch. Install a protective coating in the wet well. Replace the forcemain and make site improvements. Replace the control panel and instrumentation.
- Supervisory Control and Data Acquisition (SCADA):** Replace the outdated, dysfunctional system with a state-of-the-art SCADA system for remote monitoring and control of the three sanitary lift stations and the generator at City Hall. The new system will have a SCADA master computer at the Public Works building.

PROJECT COST AND NEED FOR FUNDING

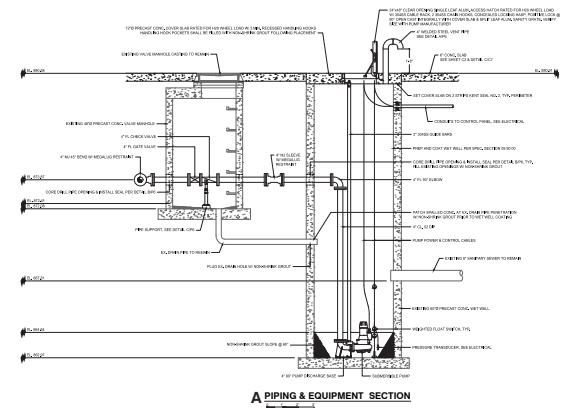
The total project cost of the proposed improvements is \$1.6 million - which is half of the City’s annual budget. The City of Osseo unfortunately cannot postpone these improvements due to the deteriorated condition of all three lift stations.

Funding the improvements with no outside assistance will force the City to delay many other needed infrastructure improvements and public safety equipment.

LIFT STATION NO. 1



LIFT STATION NO. 2 (REPRESENTATIVE OF 3 ALSO)



CONTACT INFORMATION

Riley Grams
 Osseo City Administrator
 RGrams@ci.osseo.mn.us
 763-425-2624