



Minnesota Veterans Home-Hastings Campus Upgrade Governor's Capital Investment Recommendation

MVH-Hastings Campus Update Summary of Funding (BLUF*)

\$77.77 million is the state's share (35%) for predesign, design, demolition, and construction of replacement administrative and residential infrastructure at the Minnesota Veterans Home-Hastings campus.

State would seek \$144.2 million (65%) from the Federal VA as a share of the modernization project cost.

MDVA Veterans Healthcare Domiciliary (DOMs) Program

- Since 1978, the MVH-Hastings has provided domiciliary care for Veterans.
- Domiciliary care is mental, chemical, and medical support for Veterans who require less than skilled levels of care.
- MDVA's Domiciliary program currently serves as home to 148 Veterans in two locations – Hastings & Minneapolis.

Issues to be solved

- Six buildings are nearing the end of their useful life (20 total buildings on campus)
- Deferred maintenance third party estimate is \$24 million without capital improvements
- Resident spaces are in three separate buildings with a public road separating 30+ Veterans from DOMs program services
- Rooms are double occupancy with communal bathrooms down the hall
- Physical security is difficult to establish and maintain
- MVH-Hastings campus needs updating to meet SB2030 requirements
- Capital Improvement Study Conclusion – "...due to the numerous building deficiencies, to invest in upgrading and renovating these buildings is not a good use of funds..."

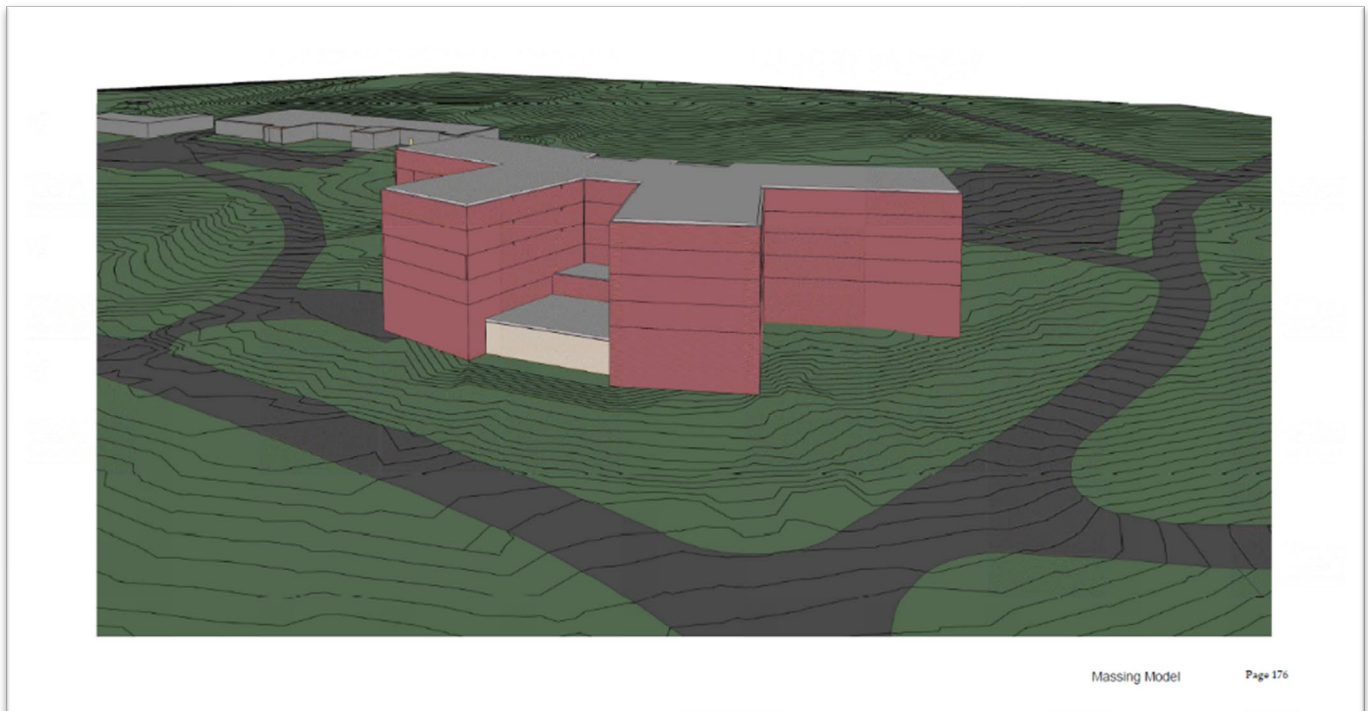
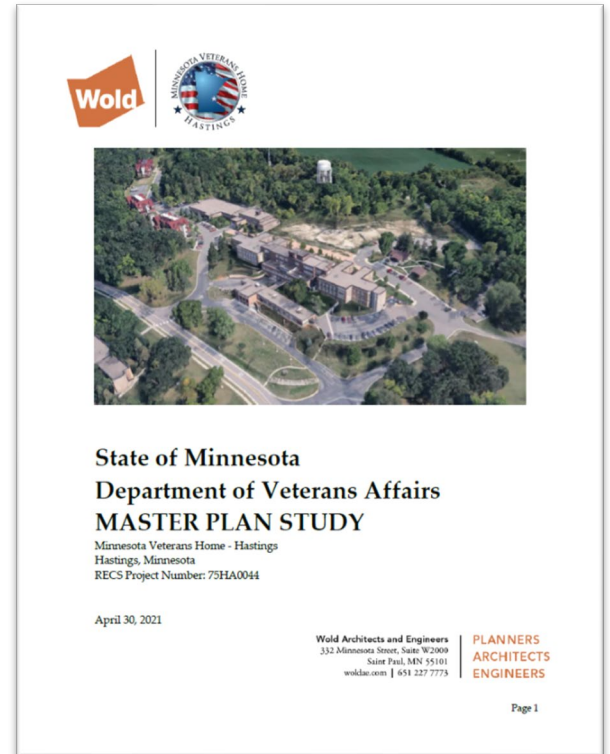


Minnesota Veterans Home-Hastings

**BLUF – Bottom Line Up Front*

Campus Capital Improvement Study

- MDVA established a master planning team and embarked on a physical condition assessment study and development of a campus master plan.
- Goals were to determine the best approach to improving the MVH-Hastings for both Veteran residents and overall campus experience.
- The recommendation is to demolish 5 buildings, including Buildings 23, 24 & 25 to be replaced with one building which consolidates Veterans housing, services, and support spaces.
- The project timeline is 42-months for all phases including predesign, design, site-preparation, demolition & construction



Final Exterior Elevation Rendition



Minnesota Veterans Home-Hastings Campus Upgrade Resultant Domiciliary Program Enhancements

Minnesota Model of Care

The Minnesota model of domiciliary services not only covers all services of the medical model (medical provider, nursing, dietary, recreation, and social work) but also provides mental, chemical, vocational, and life skill services.

This holistic approach to care is critical to meeting the needs of the Veteran population that suffer from multiple medical and mental health diagnoses.

In addition to the diagnosis need, many Veterans are facing homelessness and instability in their personal lives and need supportive services.

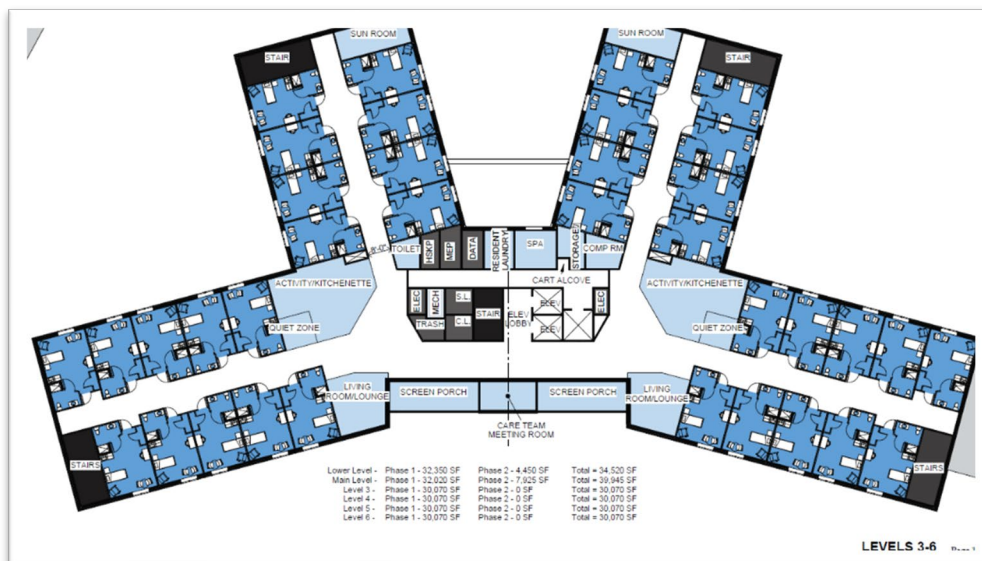
Campus Capital Improvement Impacts

Space is designed to help the residents thrive, while focusing on three main areas – Stability, Health and Meaning.

Stability – Private rooms, Veterans Service Center, medical care, mental health resources and spaces

Health – Health Care Area, fitness center, nutritional enhancements, and safety

Meaning – Recreational spaces, vocational rehabilitation opportunities, educational spaces, and spiritual growth



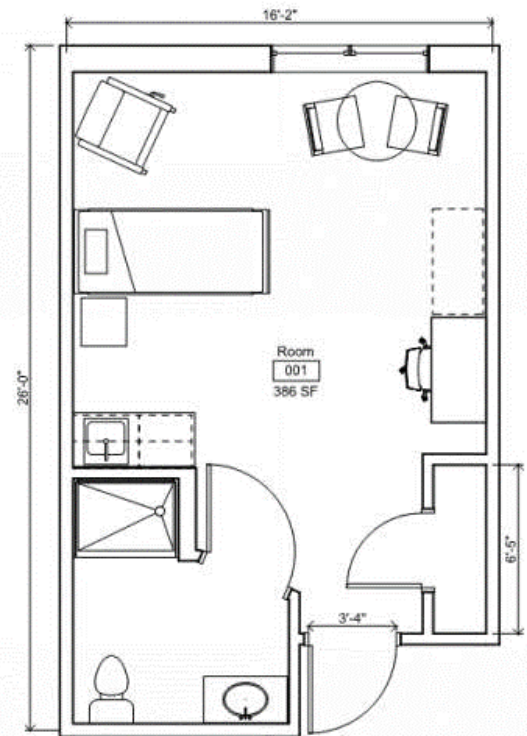
Resident Units & Households Layout

Veteran Experience

- Private living units for extended living durations that will feature private rooms and bathrooms which are important for privacy, supporting dignity and encouraging emotional growth.
- Spaces designed with additional room for storage of possessions and space for self-driven hobbies and other meaningful activities.
- The goal is to create a larger, more apartment-style living unit than the small dorm-like resident rooms they currently have.
- Overall, the new building is designed to offer a living environment for the Veterans that provides stability, encourages meaning and supports their physical well-being and mental health.

Campus Experience

- Interconnected campus spaces – residents will not be required to travel outside to access the dining room, nurse’s stations, hobby area, or work.
- The new building will provide household socialization and the support areas needed for the veterans.
- The resident living areas are organized with a group of (18) resident units around a household concept with an activity kitchen, informal dining and living areas.
- Training areas needed for residents to learn the life skills to successfully transition to living back in the community.
- Private bathrooms are universal design. Results in a space that can be used safely by veterans who may have mobility issues, are in a wheelchair, or who are aging and need some support such as grab bars.
- Energy efficient building and utility system - eliminate buildings that are beyond useful lifespan, energy hogs, or not supportive for modern use.
- Technology infrastructure to meet current and growing needs for the residents and staff.
- Expand on the outdoor opportunities in the beautiful natural setting and develop connections with the Hastings community.



1 Standard Unit
1/4" = 1'-0"

