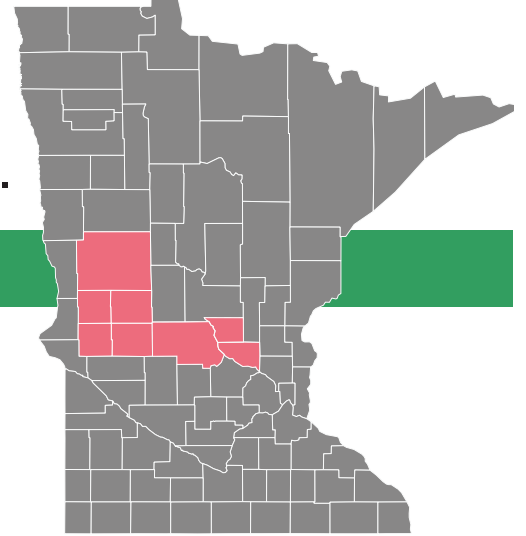


# PHASE 2: POPE/DOUGLAS SOLID WASTE MANAGEMENT Advanced Material Recovery Facility

SF 1349 HF 1362

Creating a model Greater MN unified waste diversion, recycling and composting system to meet the growing regional needs of 8 counties.



## Project Summary

**Applicant** Pope/Douglas Solid Waste Management (Government Joint Powers)

**Project Partners** Counties of Douglas, Pope, Otter Tail, Grant, Stevens, Stearns, Benton, Sherburne

**Project Location** Alexandria (Central Minnesota)

**Total Project Cost** \$19,508,200

**Requested Bonding Amount** \$12,833,000

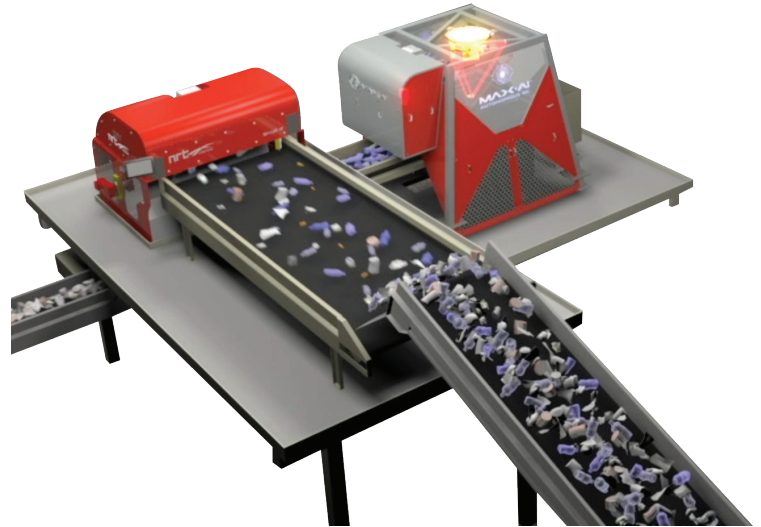
**Local Contribution** \$6,675,200

## Phase 2 Description

This project will retrofit and expand the existing waste diversion/recycling processing facility - including problem material management and emerging waste/recycling programs.

This is a shovel-ready project designed to replace aging and undersized public infrastructure with flexibility built in to meet the needs of the community for the next 30+ years.

Project will reduce GHG emissions by 20,400 tons CO<sub>2</sub>e per year which is the equivalent of removing 4,430 cars off the road.



## Material Recovery Facility

**Retrofit and Expand Existing Regional Front-end Materials Recovery/Waste Diversion Facility.**

- Facility pre-sorts/processes all incoming wastes – removing recyclable and problem materials.
- Improved safety for residents, haulers and employees.
- Robotics and enhanced equipment will recover additional recyclables from the incoming raw garbage.
- Design for diverting 8% of raw garbage as recycling (up from current 2.5%).
- Plan for flexibility to incorporate equipment upgrades.
- Process more materials.

Total Phase 2 Cost  
**\$19,508,200**

Total Grant Request  
**\$12,833,000**

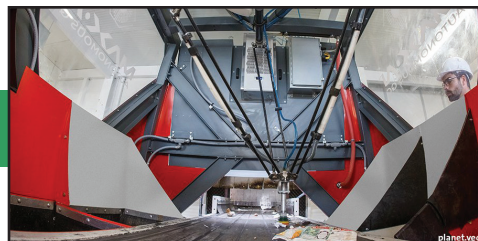
Local Contribution  
**\$6,675,200**

**Pope/Douglas  
Solid Waste Management**

**2115 Jefferson Street  
Alexandria, MN 56308**

Steve Vrchota  
320-763-9340  
steve@popedouglasrecycle.com

Pierre Willette  
D 651-717-4168  
C 612-578-7684  
pierre@goffpublic.com



Check out our vision



popedouglasrecycle.com

# Regional Solution

# Put Waste in its Place!



## Materials Recovery Facility Expansion & Renovation

### Project Scope

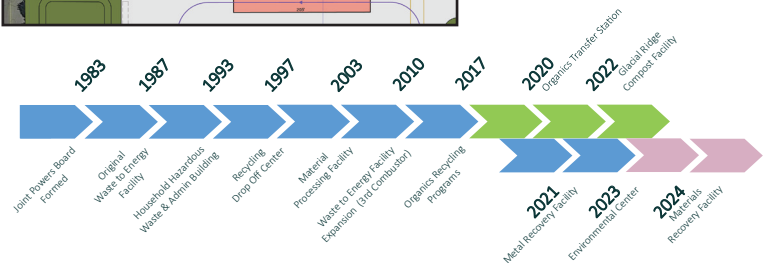
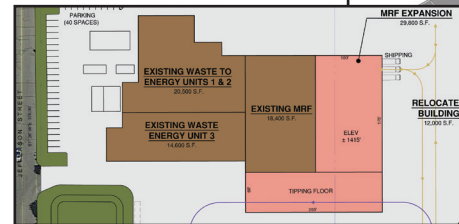
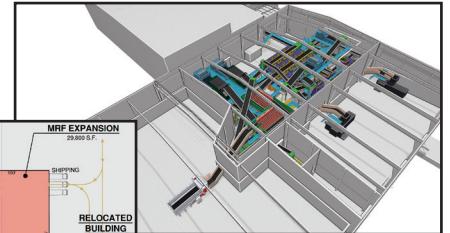
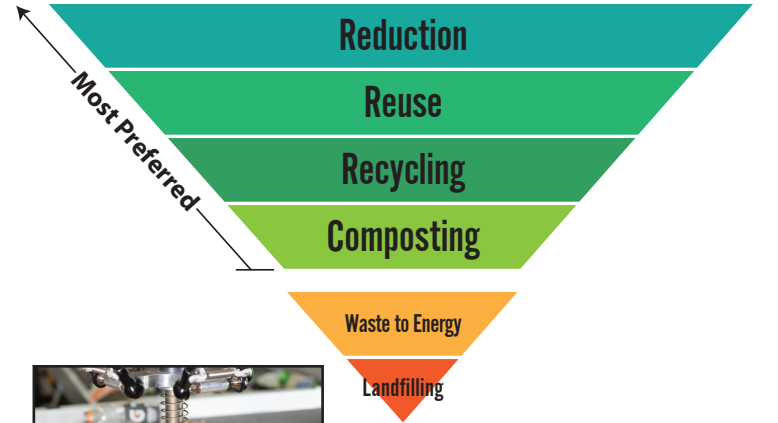
- Construct a transfer station and material recovery facility.
- Current processing facility in front of the WTE facility has a low recovery rate and is in need of a major equipment upgrade.
- The current facility processes 70-85% of incoming MSW and has a recovery rate of 2.5%. The upgraded facility would have an estimated recovery rate of over 8%. The equipment will also be able to recover additional plastics and problem materials.
- Allow flexibility to process up to 18,000 tons per year of Single Sort Recycling (Curbside Collected Material).
- Waste abatement and processing MSW to remove recyclables coincides with our current solid waste plan.
- Multiple counties already partner/contract with Pope/Douglas for the processing of their MSW.
- Project will be supported by tipping fees, recovered material sales, solid waste fees, local match and state capital.

### Details

- Tons to be Processed: 79,000 and recovering 6,400 tons of recycled material, not including organics. (An increase of 4,400 tons)
- Operating Capacity: 79,000 tons per year

## MPCA Waste Hierarchy

This project supports Minnesota's Waste Hierarchy through recycling, waste diversion and organics composting – reducing the need for Waste to Energy processing or landfilling of materials.



# Thank you! Phase 1 Update



## Glacial Ridge Composting Facility

Opened September 2022

- Source Separated Organics Processing
- Yard Waste Management
- Reduces GHG by 1,320 tons of CO2e per year.



## Environmental Center

Projected Opening Spring 2024

- Household Hazardous Waste
- Problem Materials
- Waste/Recycling Education

