

# MINNESOTA RIVER CULTURAL CORRIDOR AND RIVERBANK STABILIZATION



PREPARED BY THE DEPARTMENTS OF PUBLIC WORKS AND PLANNING & DEVELOPMENT

## PROJECT OVERVIEW

This project combines necessary riverbank stabilization with the opportunity to preserve, protect, and honor many historic and archaeological sites along the Minnesota River. Potential project partners include Scott County, Army Corps of Engineers, Three Rivers Park District, Minnesota Department of Natural Resources, Lower Minnesota River Watershed District, State of Minnesota, and the Shakopee Mdewakanton Sioux Community. The City of Shakopee is requesting \$8.2 million from the State bonding bill for the engineering, design, and construction of the project.

## RIVERBANK STABILIZATION NEED

Riverbank stabilization would reduce flooding and erosion risk to critical municipal infrastructure and significant natural resources. This has been identified as a critical local need and of regional and statewide significance.

- The Minnesota Department of Natural Resources lists the Minnesota River as an impaired body of water. Riverbank erosion is one of the many reasons.
- The Minnesota River in Shakopee has eroded the riverbank considerably over the last 100 years, upward of 100 feet near the historic Holmes Street Bridge piers and 40 to 50 feet in the downtown Shakopee area.
- Wetter conditions have caused the river to flood more frequently in recent history, which has accelerated erosion along riverbank.
- Flooding events that impact Shakopee are a consequence of practices upstream. Less than 1 percent of the water flowing into the river is from Shakopee.
- Due to increased flooding events, many river-adjacent facilities are inundated for days to months each year, including the Minnesota Valley State Trail and public parkland. Erosion poses a specific risk to Huber Park, a premier city park.

## SANITARY SEWER LINE

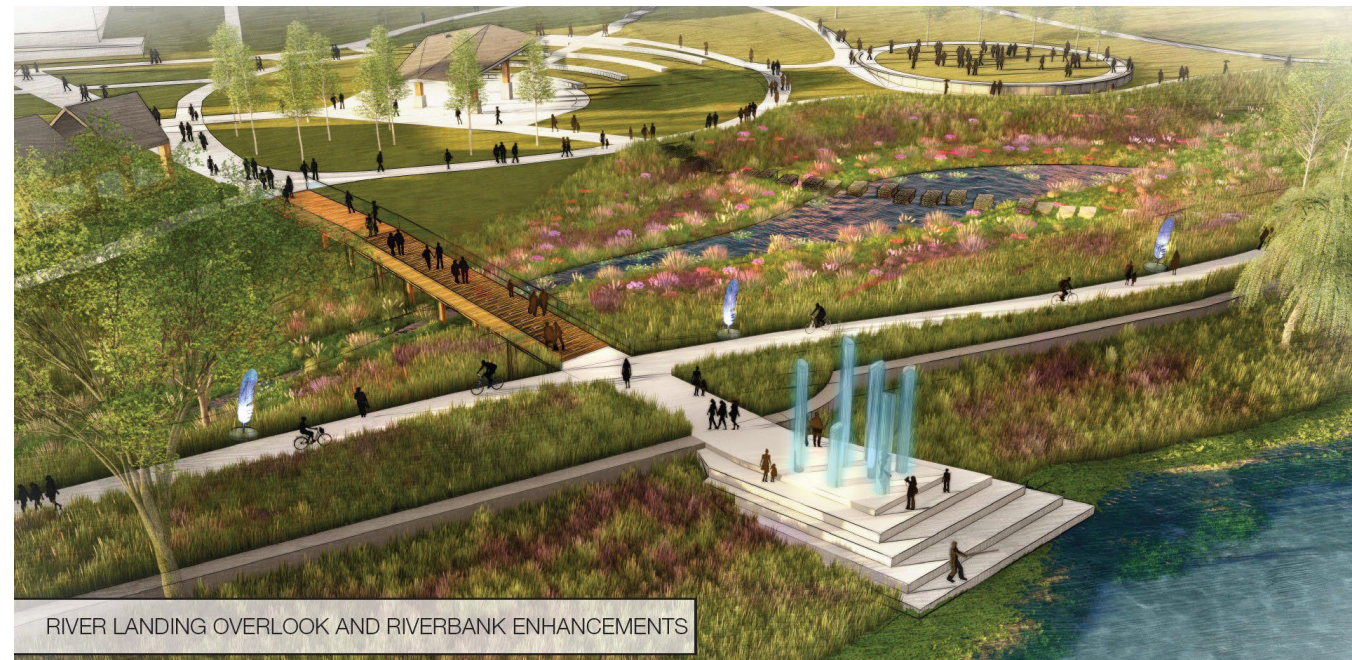
Erosion also poses a risk to a critical municipal trunk sanitary sewer line that runs parallel along the river for approximately 8,800 feet.

- Flooding inundates many of the 40 sanitary sewer manholes along the river. If something were to give way, the sanitary sewer would be inundated with river water and difficult emergency repairs would be necessary.
- The trunk sewer line is a legacy Metropolitan Council line, inherited by Shakopee and critical to thousands of residents.

## RIVERBANK COMPARISON



## RIVERBANK STABILIZATION AND ENHANCEMENTS IN HUBER PARK



RIVER LANDING OVERLOOK AND RIVERBANK ENHANCEMENTS

## INUNDATION OF SEWER LINE BY RIVER (2019)



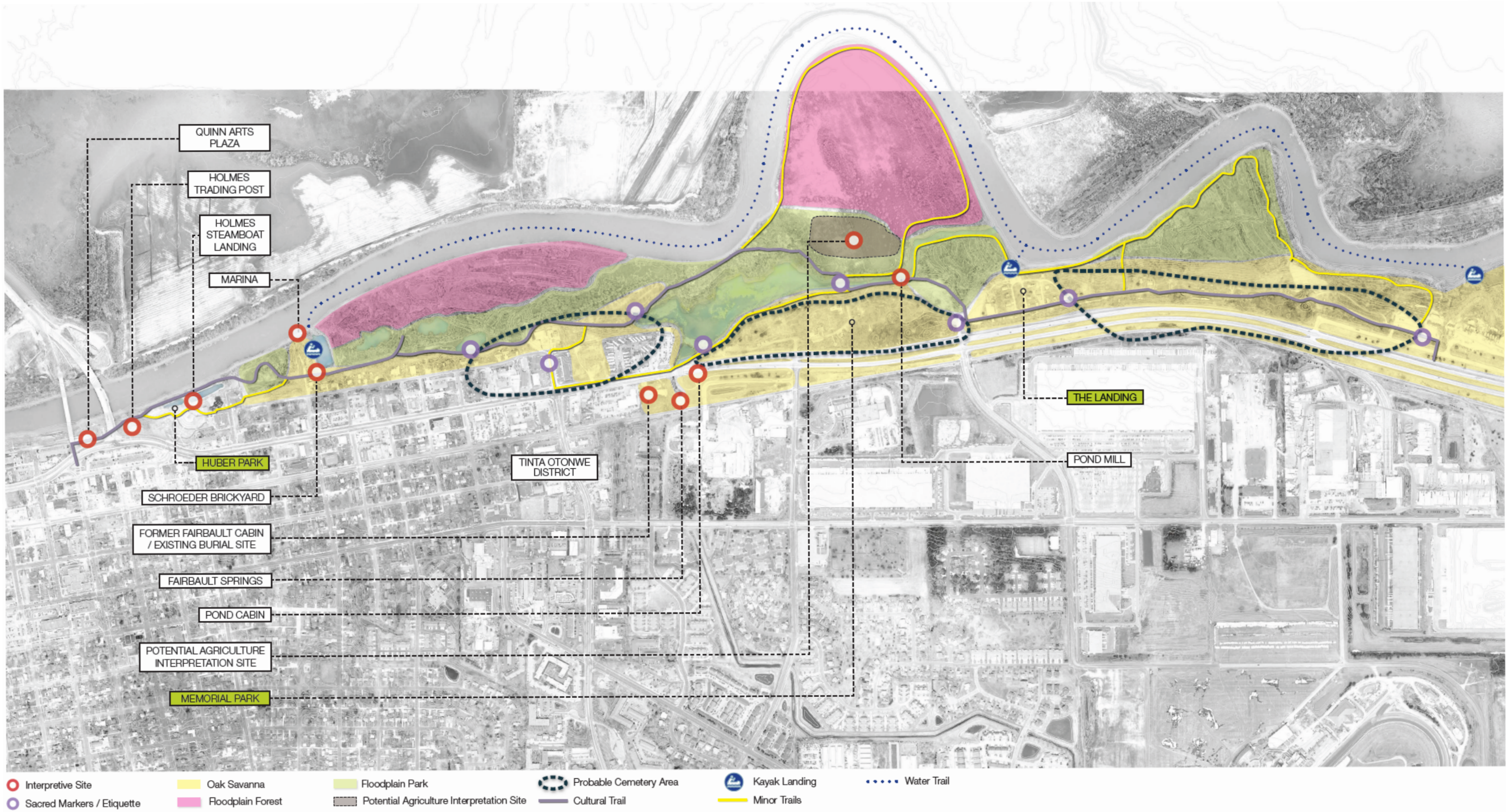
## CULTURAL FACILITIES

The Minnesota River Valley is home to significant cultural resources for the Dakota people and European settlers. The project would include historic interpretation of many sites along the Minnesota River including:

- Holmes Street Bridge - nationally registered historic site.
- The Landing - an historic heritage site which includes many original settler structures and serves as a major historical interpretation site.
- Dozens of Dakota burial mounds in what was their original settlement site. This area holds great significance to the Shakopee Mdewakanton Sioux Community and many other Native American tribal nations.







# Cultural Trail - Huber Park to Memorial Park