



2023 Bonding Request

Utility Extension

Howard Gnesen Rd to Martin Rd Extension
and Rice Lake Rd to Martin Rd Extension

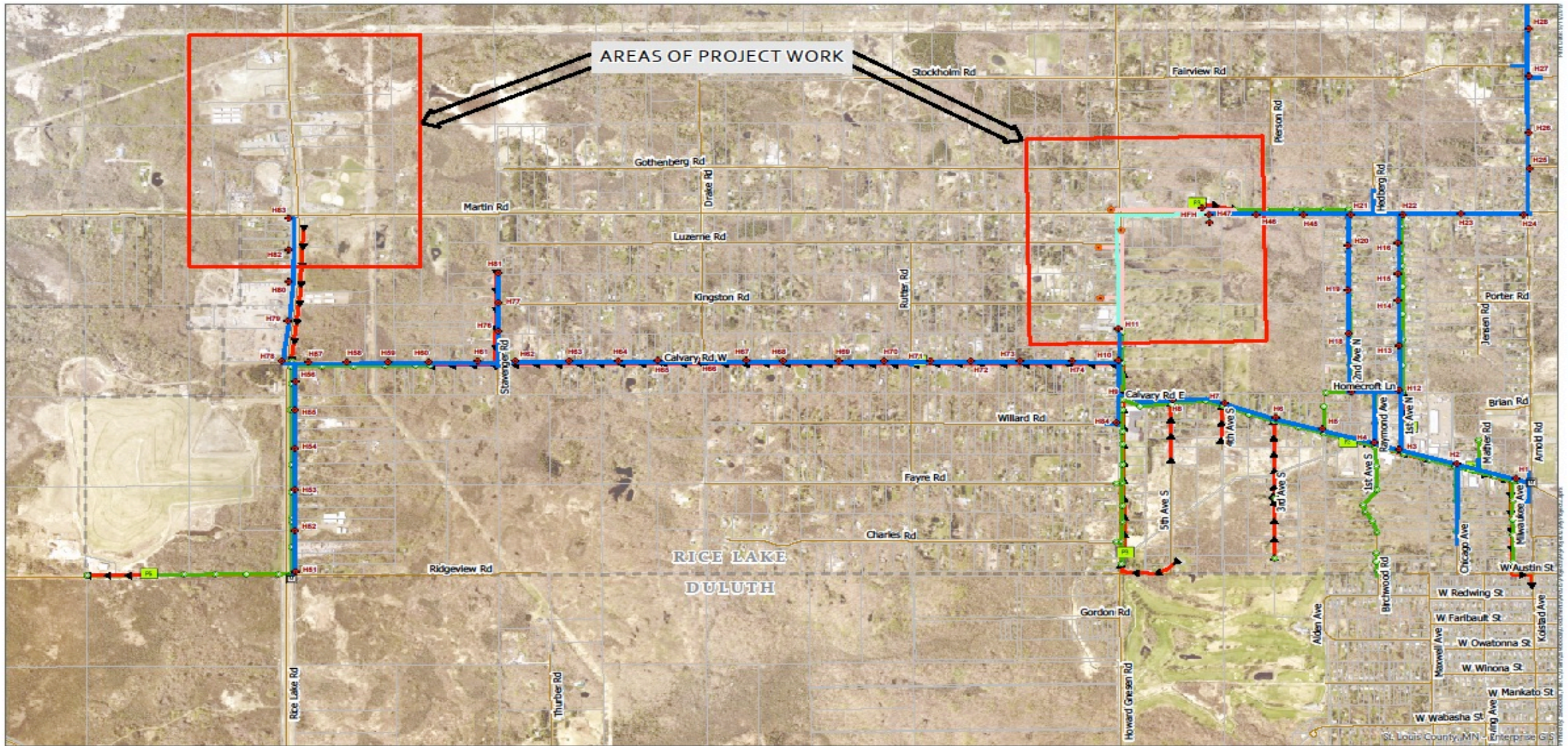
\$1.8 Million Request



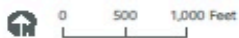
This Photo by Unknown Author is licensed under [CC BY-SA](#)

Reasons for funding request

- Water systems need to be looped to reduce stagnant water sitting in supply lines due to low usage and/or dead-end lines.
- Large parcels with significant amounts of road frontage makes it cost prohibitive to assess property owners for improvements.



Data Sources:



- ◆ Water Hydrants
- Meter Station
- Elevated Storage Tank
- Water Mains
- Sewer Manholes
- Lift Station
- Sewer Gravity Mains
- ▶ Sewer Pressurized Mains
- Municipal Boundaries

Project Locations

CITY OF RICE LAKE
ST. LOUIS COUNTY, MN

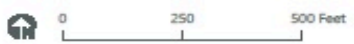


St. Louis County, MN - Enterprise GIS



Data Sources:

- ◆ Water Hydrants
- Lift Station
- Water Mains
- Sewer Gravity Mains
- Sewer Manholes
- ▶ Sewer Pressurized Mains
- Air Release
- Municipal Boundaries

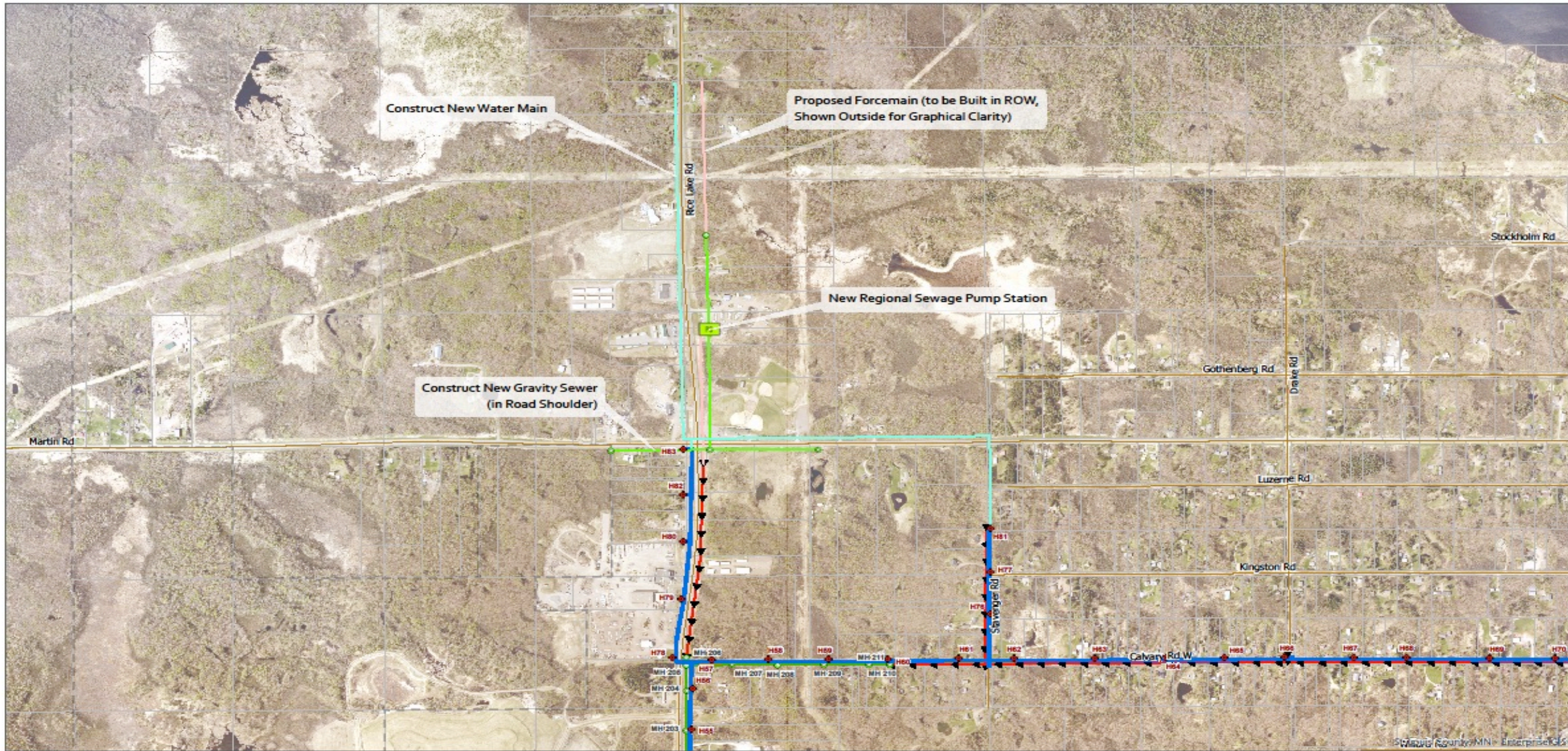


Howard Gnesen/Martin Road Project Area

CITY OF RICE LAKE
ST. LOUIS COUNTY, MN

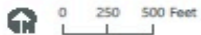
Howard Gnesen Rd/Martin Rd Extension

- Water extension would complete the loop for two dead-end lines. Allowing the City to flush the lines to maintain clean water for our residents.
- Large parcel on southeast side belongs to Calvary Cemetery and is primarily wetlands so future development in this area is limited.
- City Fire Hall is located at end of waterline and the extension would provide increased and more reliable water pressure to fill our fire trucks that are used to serve and protect the remainder of the City not served by City water.
- Approximate extension 3,400 feet



Data Sources:

- ◆ Water Hydrants
- Sewer Gravity Mains
- Water Mains
- ▶ Sewer Pressurized Mains
- Sewer Manholes
- Municipal Boundaries



Rice Lake Road Project Area

CITY OF RICE LAKE
ST. LOUIS COUNTY, MN

Rice Lake Rd and Martin Rd Extension

- This area of the City is our commercial corridor and is prime for development which would help alleviate the tax burden currently carried by homeowners in Rice Lake.
 - Located on County State Aid Hwy
 - Located 3.5 miles from airport
 - 17,000 vehicles pass through this intersection daily
 - Commuter route for people from East Duluth, Hermantown, Iron Range, and surrounding townships to enter Duluth
- Water and sewer extension would allow for future commercial development in our community.
- Water and sewer extension would also allow current businesses to expand and improve their operations.
- Water extension on Rice Lake Road is being installed right now, thanks to the \$1 million 2020 Special Appropriations.
- Sewer extension on Rice Lake Road needs additional funding to complete.
- Approximate extension is 3,000 feet.

Rice Lake Rd and Martin Rd Extension

- Water extension on Martin Road would complete a loop of the water system.
 - Boomtown and City extension on Martin completed 875 feet with the City paying for 500 feet.
 - Open Arms Assisted Living Facility will complete 600 feet with the City paying for engineering and materials.
 - Leaving approximately 1,200 feet to complete the loop.
- Rice Lake has been partnering with developers to extend the sewer and water mains but needs additional help from the State to complete the “middle mile”.