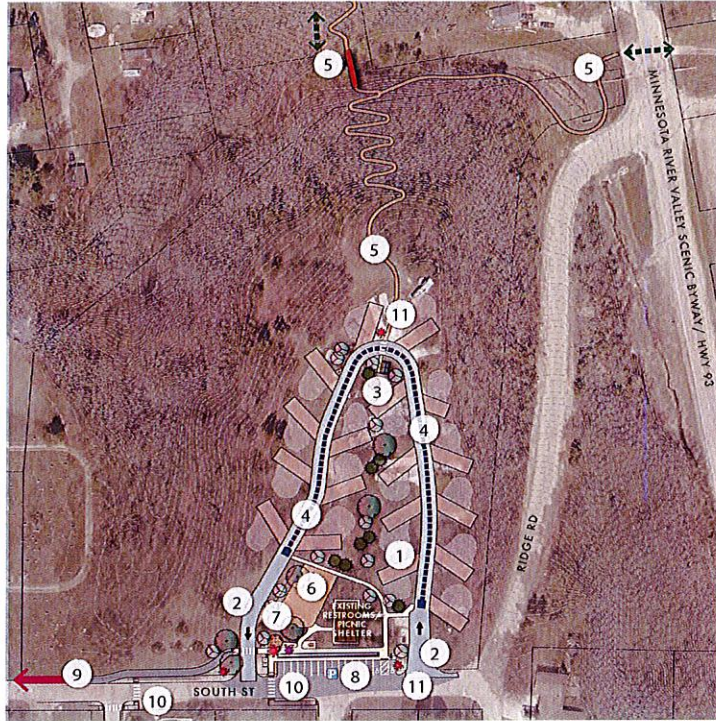


Figure 3 - Proposed City Trails System

# Sale Tax Project

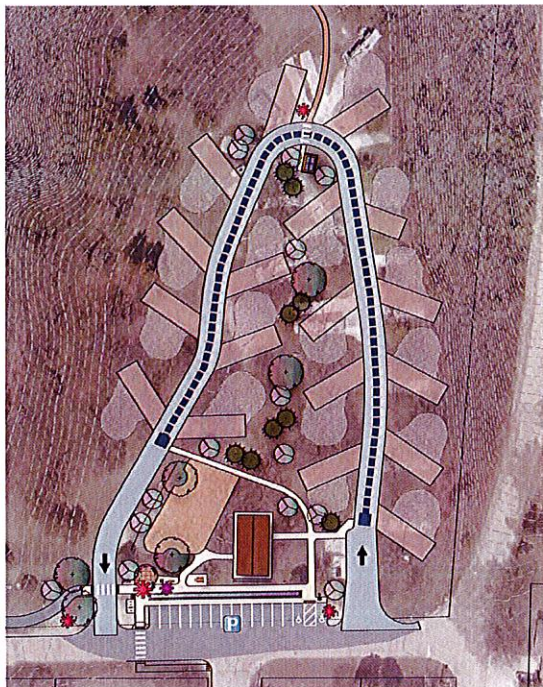
## ALLANSON'S PARK CAMPGROUND MASTERPLAN



### KEY FEATURES

- 1 UPDATED CAMPGROUND SITES MEETING NATIONAL PARK SERVICE STANDARDS & IMPROVED UTILITY CONNECTIONS
- 2 ONE-WAY ACCESS DRIVE LOOP THROUGH CAMPGROUND FOR THE 18 CAMP SITES SHOWN
- 3 ADDITIONAL SATELLITE RESTROOM FACILITIES FOR CAMPERS ON NORTH END
- 4 SHARED PEDESTRIAN/ VEHICULAR ACCESS ROUTE
- 5 IMPROVED CONNECTION TO EXISTING SOFT SURFACE TRAILS, NEW PEDESTRIAN BRIDGE & TRAIL CONNECTION TO EXISTING LEVEE TRAIL
- 6 RECONFIGURED EXISTING PLAYGROUND & IMPROVED PEDESTRIAN CONNECTION AT EXISTING RESTROOMS/ PICNIC SHELTER
- 7 REGIONAL TRAILHEAD AMENITIES: SIGNAGE, BIKE FIX-IT, BIKE LOOPS, SEATING, WATER FOUNTAIN/ BOTTLE FILLER
- 8 IMPROVED PARKING WITH ADA STALLS, PAVEMENT MARKING & ACCESSIBILITY
- 9 REGIONAL TRAIL CONNECTION TO FUTURE REGIONAL TRAIL SYSTEM
- 10 IMPROVED/ SAFE ROAD CROSSINGS FOR PEDESTRIANS & BICYCLES
- 11 IMPROVED SIGNAGE FOR CAMPGROUND, PARK & REGIONAL TRAILHEAD

### ENLARGED VIEW: CAMPGROUND CONCEPT LAYOUT



### ENLARGED VIEW: REGIONAL TRAILHEAD CONCEPT

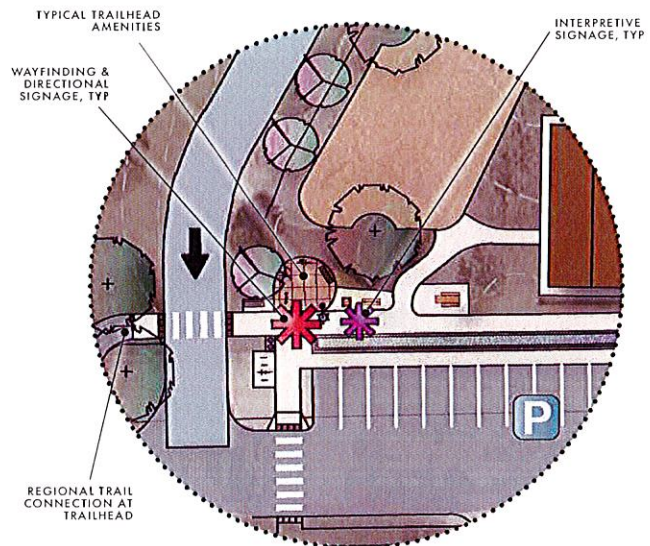


Figure 6 - South Trailhead Concept