

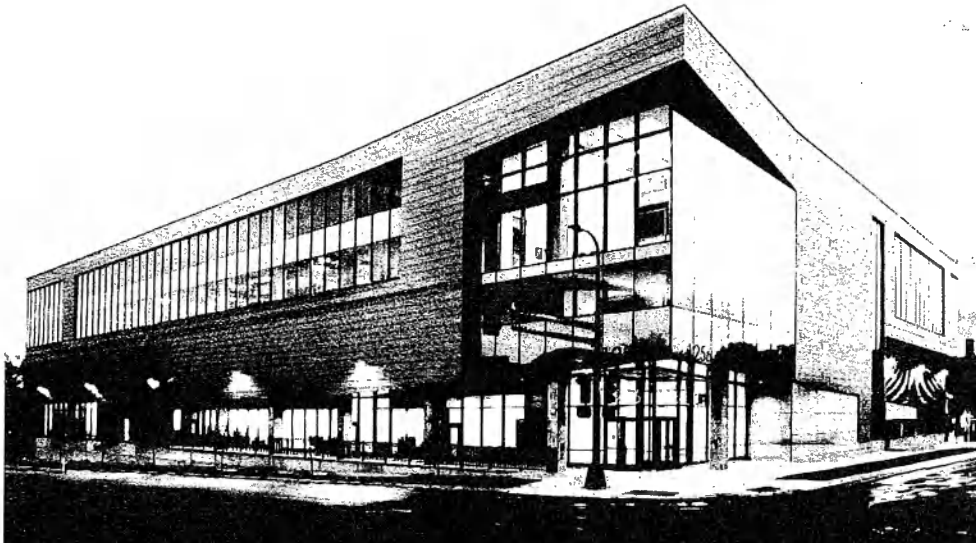
**SUMMIT**  
ACADEMY OIC

**SUMMIT 2025**  
A BRIDGE TO THE MIDDLE CLASS

# SUMMIT 2025: INVESTMENT IN TALENT & PARTNERSHIP



ATOMIC



Accredited CTE

Over 1,000 students enroll annually

Recognized by the *New York Times* as a leader in training and workforce development (*Business Day, February 23, 2018*)

Largest construction training provider awarding short-term certificates in the Twin Cities (*RealTime Talent*)

For every dollar invested in Summit, the ROI is \$7.52 as reported by the Constellation Fund

## Information Technology

- Service Desk Technician (2018)
- Cybersecurity (2020)
- Application Development (2020)
- Financial Services

## Construction

- Electrician
- Carpentry
- Solar Energy
- Project Management

## Healthcare

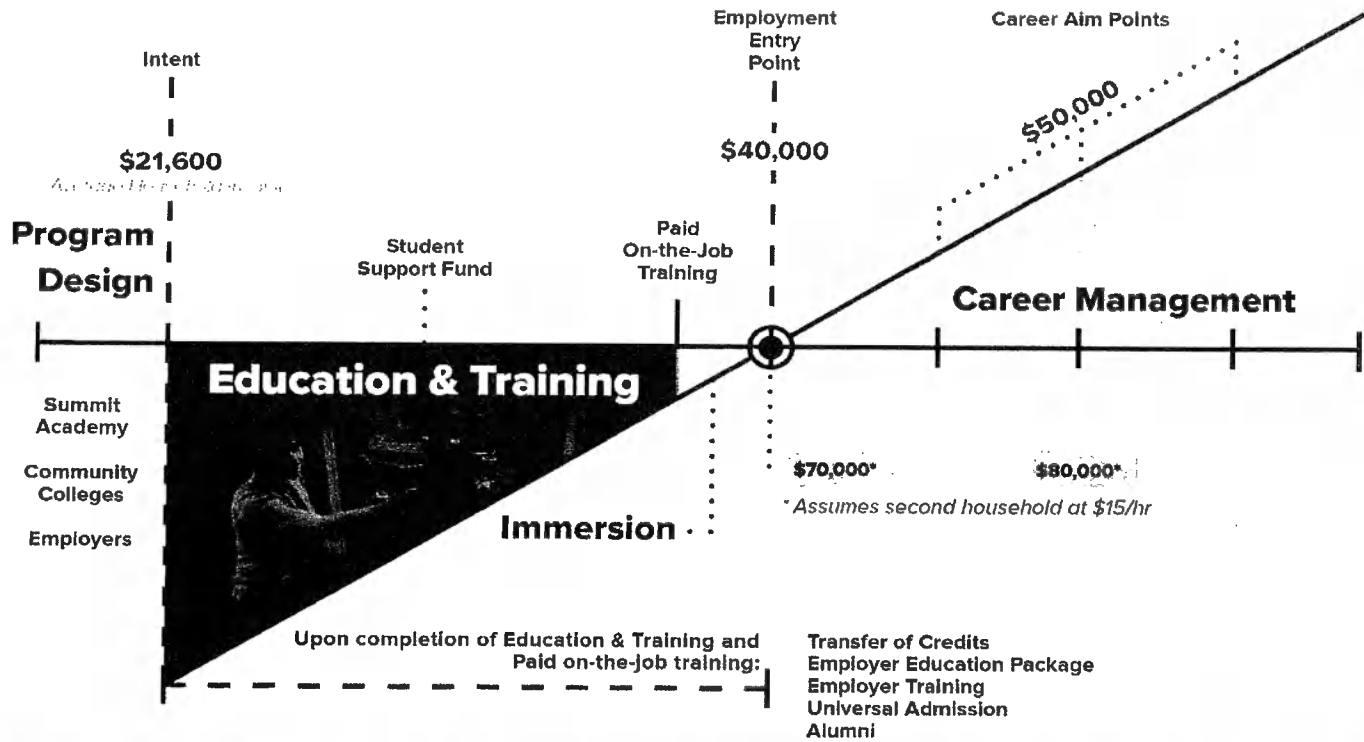
- Medical Administrative Assistant
- Health Informatics
- Medical Assistance (Clinical)

## Accelerated GED

# CREATING THE CAREER GLIDEPATH TO \$70,000 >

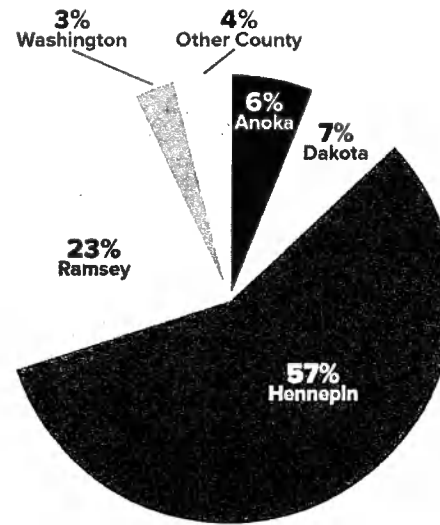
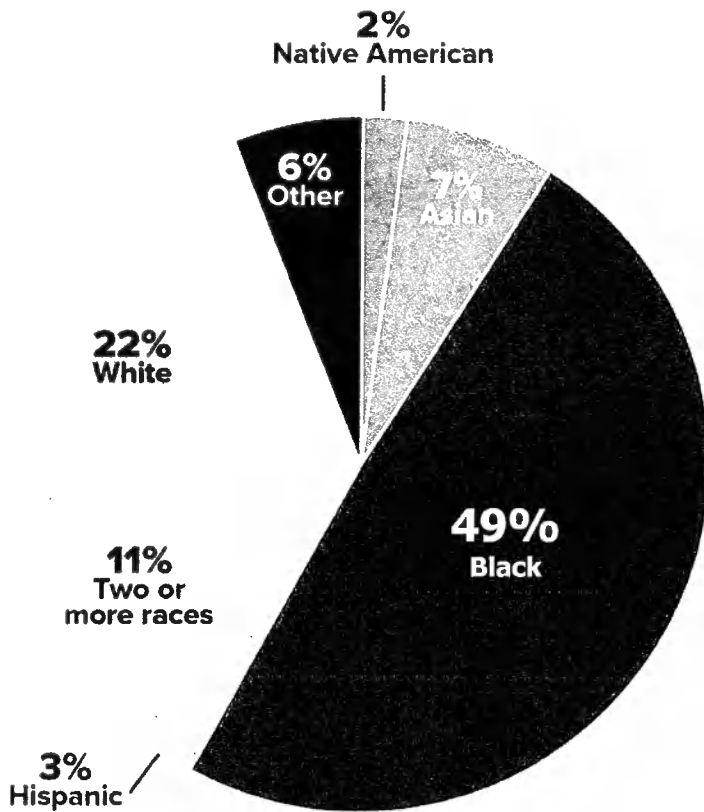


## Path to the Middle Class



- Program for Careers vs Jobs
- Build a Culture of Progress
- Build a Pipeline

# STUDENT DEMOGRAPHICS (FY21)



Unemployed	45%
Below 100% FPG	36%
Below 200% FPG	69%
No income info	7%

# EMPLOYMENT OUTCOMES - BY PROGRAM



## CONSTRUCTION

FY22 YTD*	118	\$20.86	99%	98%
FY21	122	\$18.48	98%	93%
FY20	144	\$18.16	99%	92%
FY19	264	\$17.05	94%	94%

## INFORMATION TECHNOLOGY

FY22 YTD*	79	\$20.52	98%	98%
FY21	37	\$17.26	100%	97%
FY20	48	\$16.89	100%	96%
FY19	14	\$17.00	100%	100%

## HEALTHCARE

FY22 YTD*	44	\$18.60	100%	92%
FY21	45	\$17.14	98%	78%
FY20	95	\$16.25	100%	76%
FY19	146	\$15.48	99%	73%

\*July 1 2021 - Feb 22, 2022



2,000

1,650

1,500

1,340

1,145

1,095

989

990

932

855

851

742

687

761

631

518  
424

417

452

287

208

Actual  
FY19

Actual  
FY20

Actual  
FY21

Goal  
FY22

Goal  
FY23

Goal  
FY24

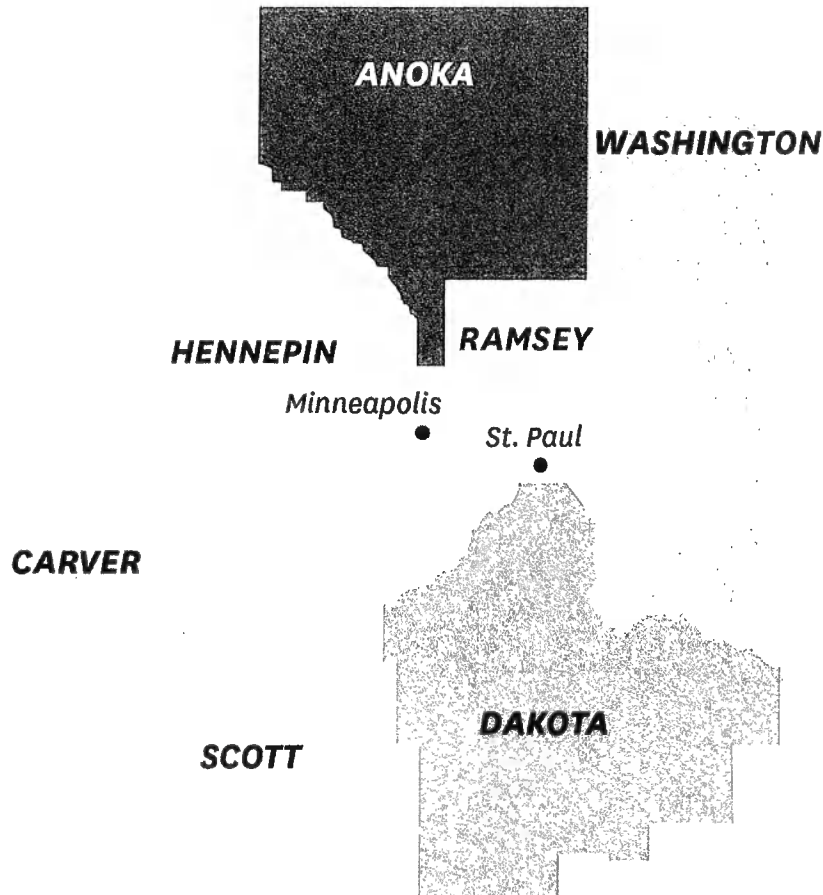
Goal  
FY25

Adult Student Enrollment

Complete Program

Placed in jobs

# THE METRO WIDE VIRTUAL NETWORK



A **local virtual network** will connect low-income communities of color to in-demand, high-wage IT occupations and employers.

Summit Academy OIC will expand accredited training offerings to broader metro area, at **no out-of-pocket costs** to the enrolled students.

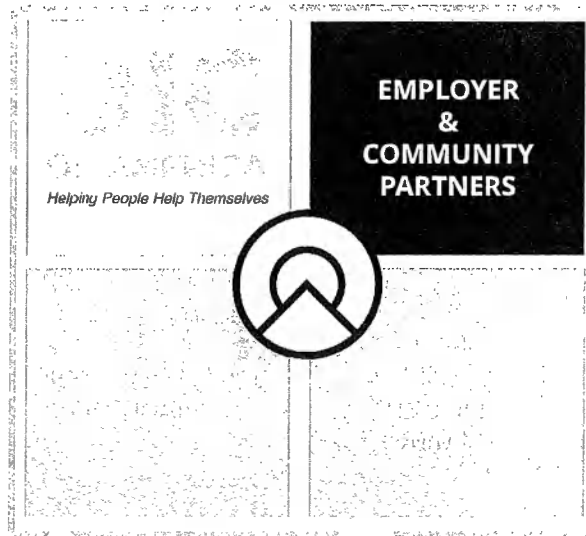
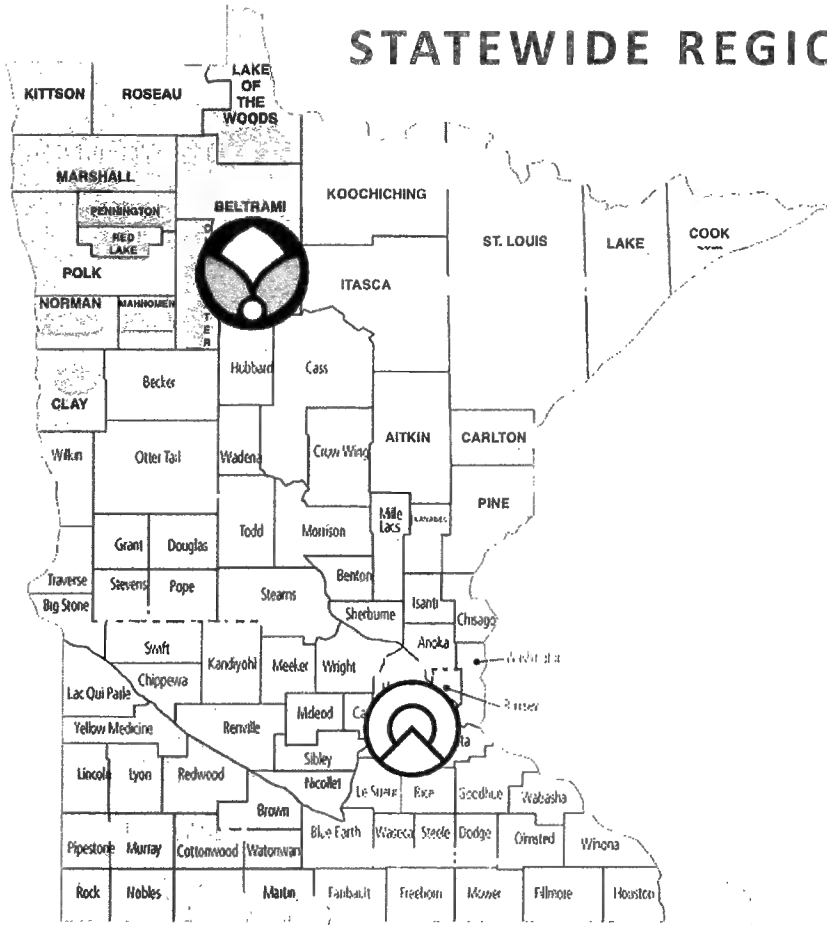
Summit Academy OIC will expand accredited training offerings to broader metro area, at no out-of-pocket costs to the enrolled students.

# SUMMIT 2025: INVESTMENT IN THE FUTURE



## STATEWIDE REGIONAL VIRTUAL NETWORK

Expansion of local virtual delivery system to reach communities statewide.





# STUDENT SUCCESS



**Angel Morris**  
2020 Graduate

Service Desk Technician at  
Atomic Data

Angel enrolled when she was let go from her retail job at the start of the pandemic.



**Azra Jones**  
2021 Graduate

Software Enterprise  
Apprentice at U.S. Bank

Azra left his part-time, low-wage job as a grocery store clerk to enroll at Summit.



**Gerald Graffunder**  
2021 Graduate

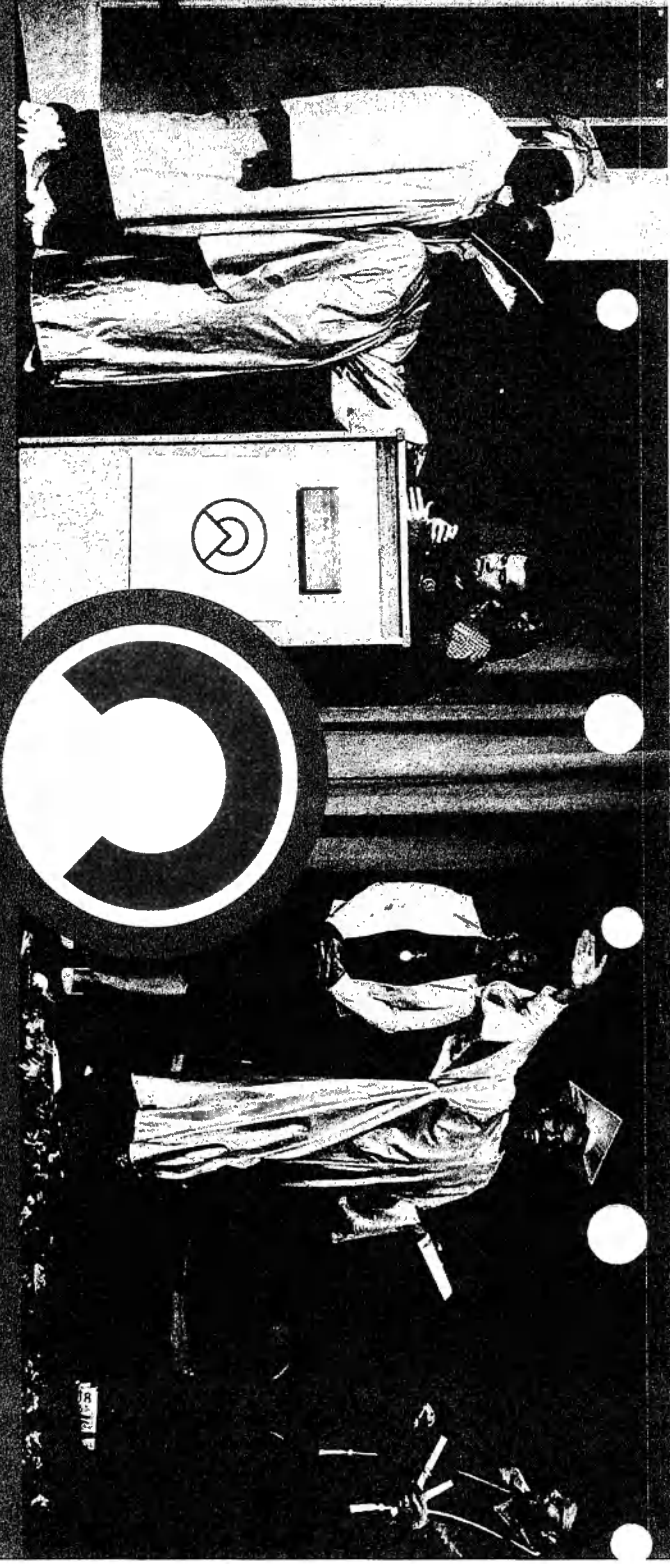
Service Desk Technician at  
Atomic Data

Gerald enrolled at Summit when his job in special education was eliminated when the pandemic began.

## INVESTMENT IN THE FUTURE



- Summit has received direct appropriations from the legislature since 2017
- These investments have allowed Summit to strategically expand our offerings to meet growing employer demand
- As a result, Summit's placement ratio far exceeds industry standards
- Reliable, predictable state funding allows us to grow to meet employer needs in an ever-changing economy
- Request to move Summit funding to the General Fund base and expand funding to implement metro and statewide virtual networks



# SUMMIT

ACADEMY OIC

Contact:

Leroy West, President  
lwest@saolc.org  
Tel: 612.278.5240