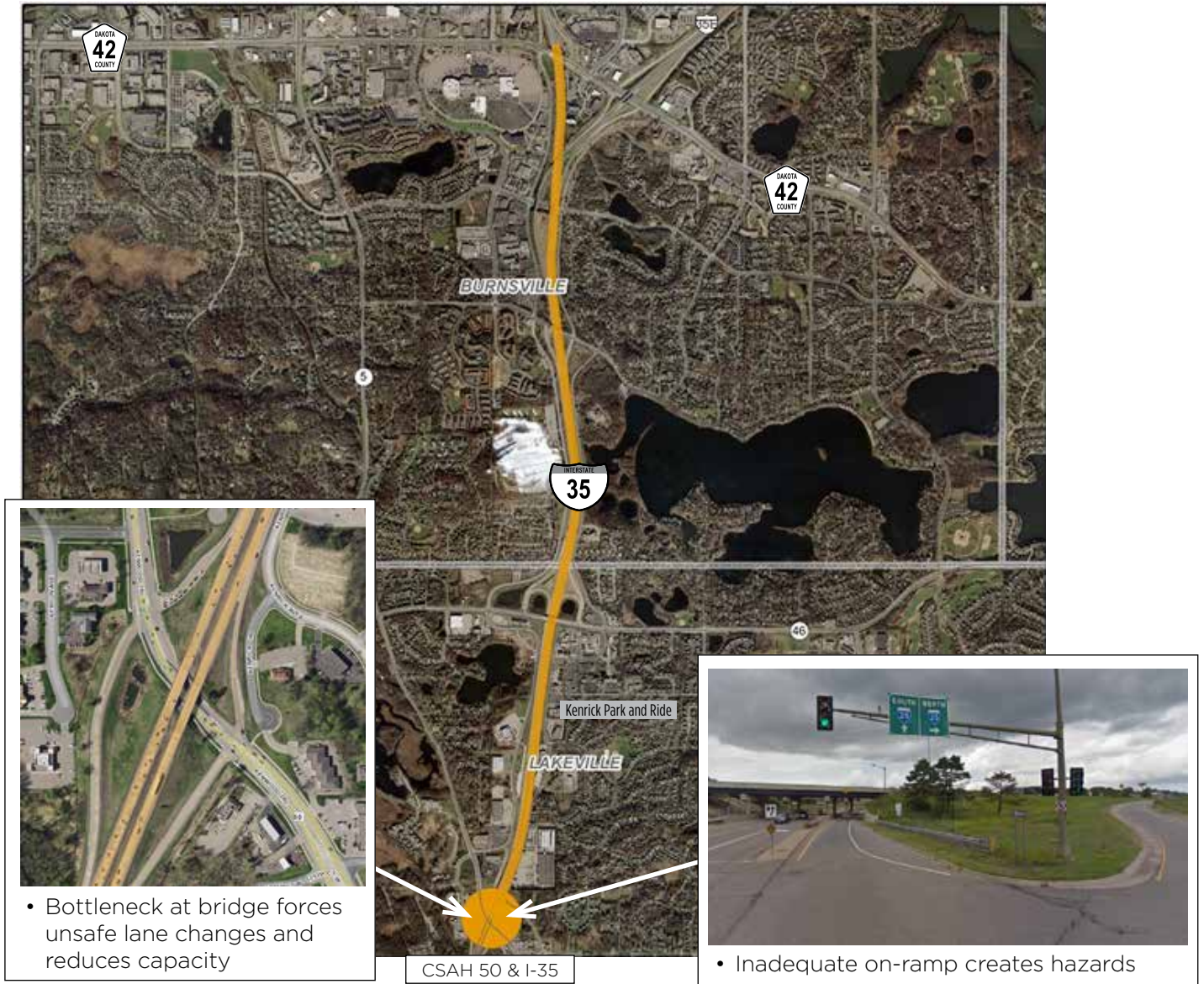


Dakota County I-35/CSAH 50 Interchange and Corridor Improvements



• Bottleneck at bridge forces unsafe lane changes and reduces capacity

CSAH 50 & I-35

• Inadequate on-ramp creates hazards

- I-35/CSAH 50 interchange improvements for capacity and safety
- Principal Arterial Interstate
- 85,000 to 111,000 average daily traffic; 8,500 to 9,500 heavy commercial average daily truck traffic
- Potential METRO Orange Line Extension BRT service to Kenrick Park and Ride
- Tier I Freight Corridor; Regional Truck Highway Corridor Study
- Tier III MnPASS Corridor; MnPASS System Study Phase III