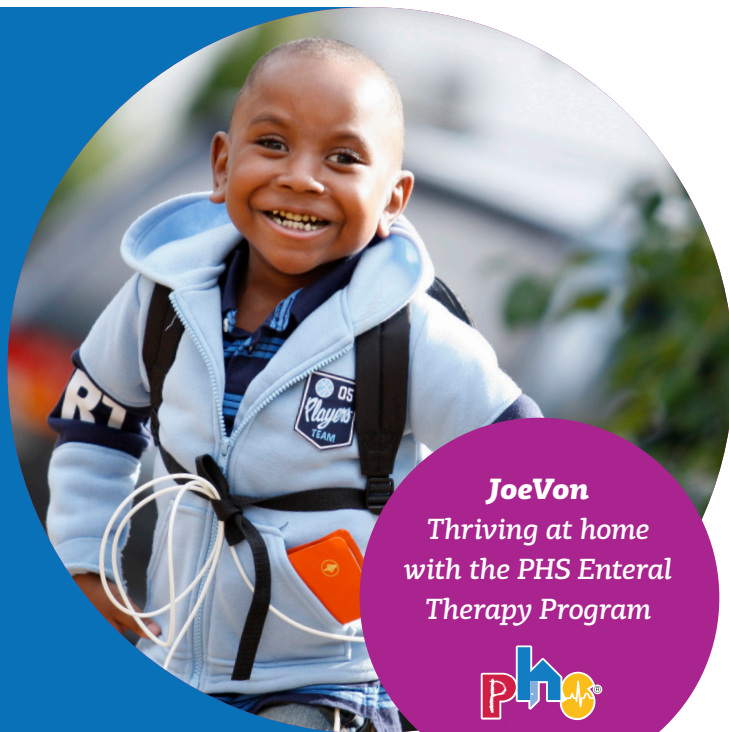


## Maintaining access to enteral therapy allows medically complex children to receive the specialized products and clinical support they need. This ultimately leads to:

- patients receiving care safely in their homes,
- millions of dollars saved by the state, and
- children achieving their best outcomes.



**JoeVon**  
Thriving at home  
with the PHS Enteral  
Therapy Program



### Impact to Minnesota's Medically Complex Children

- **Over 2,000 children with medical complexities** are able to stay healthy at home with pediatric nutritional products and clinical expertise provided by PHS dietitians, nurses, and therapists
- Without home nutrition management, children will unnecessarily remain in the hospital and have increased risk for readmission:
  - Exposed to infection in overwhelmed hospitals
  - Away from their families, community activities, and education
  - Keeping parents from their jobs
  - Increasing cost to the state
- Many of these children require ICU level care upon admission and are evidenced to require longer lengths of hospitalization. An ICU level admission costs approximately \$5,000 per day with an average length of stay of 7 days, costing the \$35,000. **Unnecessary hospitalization will cost the State 10 times the cost compared to home-based enteral therapy services.**

### There's a better way - Value-Based Payment Model

- The proposed model advances the MN Medicaid program toward the accountability of value-based design.
- Children with medical complexities have unique medical needs that don't represent the majority of Medicaid beneficiaries, and so too, should their care models.
- Our children and their families are grateful for the State's past support. **We ask for it again to support a better model that brings more care to more kids and reduces their total cost of care.**

**PLEASE SUPPORT HF4059/SF3613, COST NEUTRAL LEGISLATION THAT WILL AVOID DISRUPTING ACCESS TO HOME-BASED ENTERAL THERAPY SERVICES FOR CHILDREN.**

*Save limited healthcare dollars.*

*Keep Minnesota's medically complex children safe and healthy at home.*



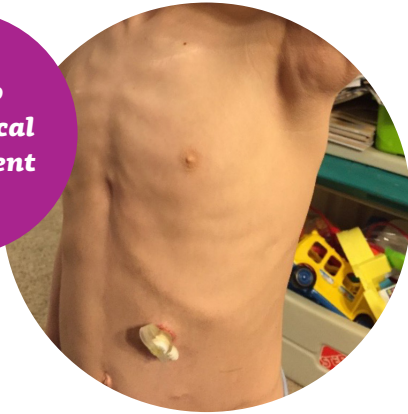
# Meet Lukas

AGE: 11

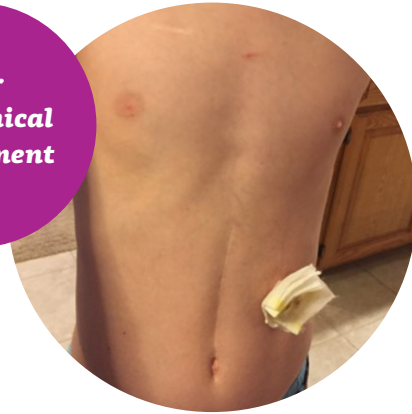
**DIAGNOSIS:** Mitochondrial depletion syndrome and gastrostomy status

**SERVICES USED:** PHS Enteral Nutrition Program

**Prior to  
PHS Clinical  
Involvement**



**After  
PHS Clinical  
Involvement**



## LUKAS' STORY

In September of 2015, Lukas weighed 66 pounds 2 ounces and was on an Enteral plan of Peptamen Jr 1.5, 800 ml formula (1,200 kcals/day).

After no weight gain in 11 months, he was hospitalized and referred to PHS for nutrition assessment.

Lukas had lost some weight after his hospital visit despite a total calorie increase of 20%. PHS RD recommended an additional calorie increase of 8.3%.

After gaining 2 pounds 4 ounces in just 2 months, Lukas suffered an episode of gastroparesis, and a G/J tube was placed to allow him to continue to receive enteral nutrition.

By the end of May, Lukas weighed in at 74 pounds, a gain of 6 pounds 13 ounces in just 4 months.

*"The neurologist is tickled pink — he is so happy with his improvement that he didn't want to make any changes and will check back in 6 months. Also, Lucas is more involved with therapies and has better interactions with his teachers. He doesn't sleep during the day as much as he used to and he has better energy in general."*

*- Lukas' Mom*

**PLEASE SUPPORT HF4059/SF3613, COST NEUTRAL LEGISLATION THAT WILL AVOID DISRUPTING ACCESS TO HOME-BASED ENTERAL THERAPY SERVICES FOR CHILDREN.**

*Save limited healthcare dollars.*

*Keep Minnesota's medically complex children safe and healthy at home.*

