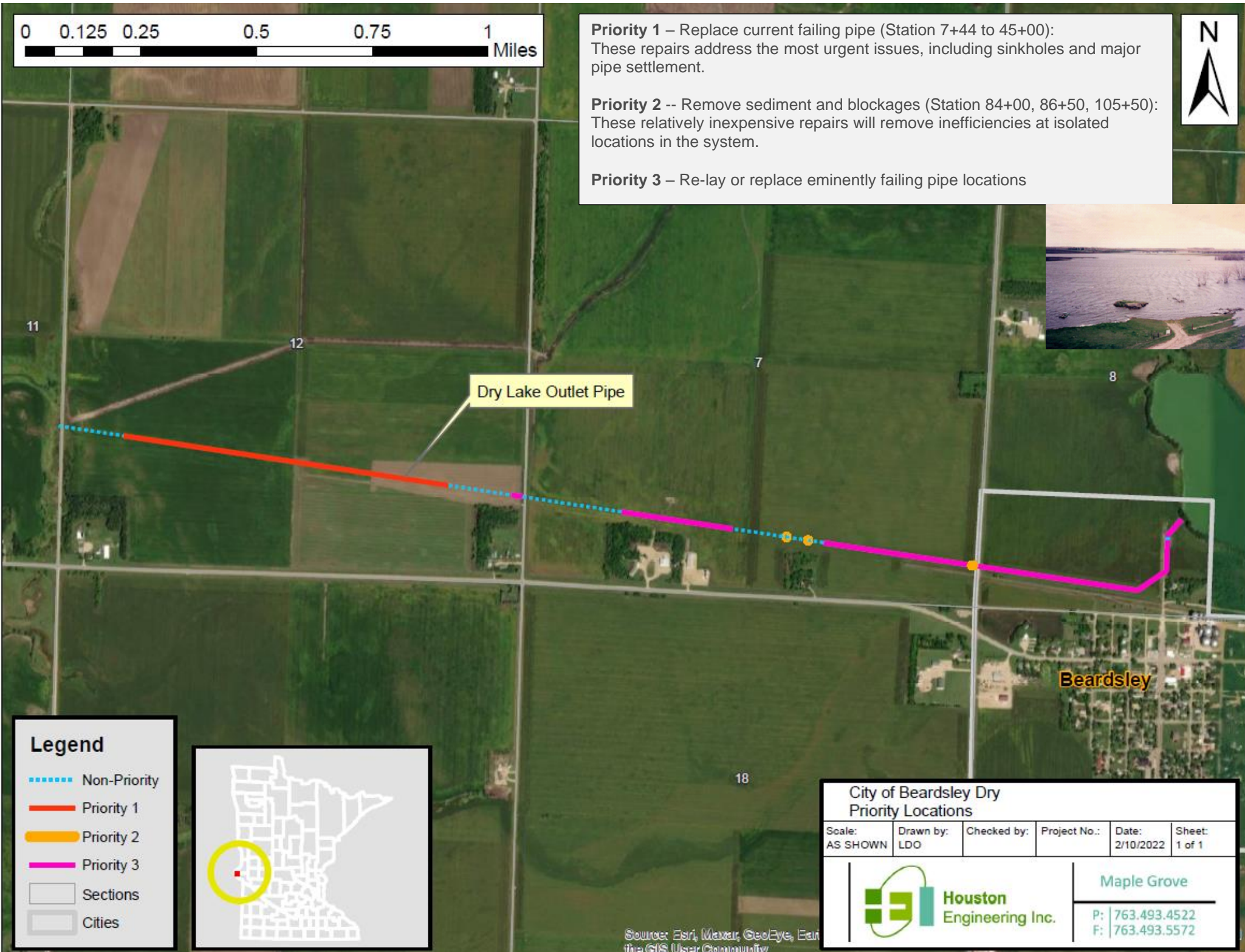


0 0.125 0.25 0.5 0.75 1 Miles

Priority 1 – Replace current failing pipe (Station 7+44 to 45+00):
 These repairs address the most urgent issues, including sinkholes and major pipe settlement.

Priority 2 -- Remove sediment and blockages (Station 84+00, 86+50, 105+50):
 These relatively inexpensive repairs will remove inefficiencies at isolated locations in the system.

Priority 3 – Re-lay or replace eminently failing pipe locations

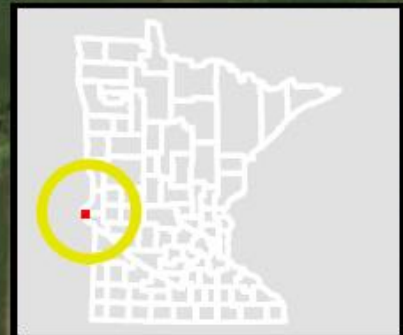


Dry Lake Outlet Pipe

Beardsley

Legend

- Non-Priority
- Priority 1
- Priority 2
- Priority 3
- Sections
- Cities



City of Beardsley Dry Priority Locations

Scale: AS SHOWN	Drawn by: LDO	Checked by:	Project No.:	Date: 2/10/2022	Sheet: 1 of 1
--------------------	------------------	-------------	--------------	--------------------	------------------



**Houston
Engineering Inc.**

Maple Grove

P: 763.493.4522
F: 763.493.5572

Source: Esri, Maxar, GeoEye, Earthstar, etc.
 the GIS User Community