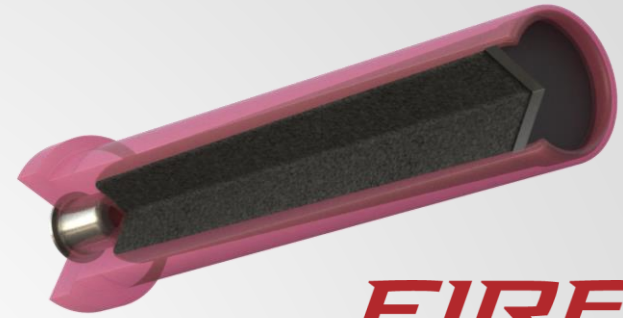


FIRE STICK™



FIRE
STICK

U
S
A
G
E

A new muzzleloading propellant/rifle system in conjunction with Federal, Hodgdon Powder and Traditions Firearms to revitalize the Muzzleloading market.

- • All-new patented muzzleloading ignition system
- • Allows **safe, easy removal of the unfired charge from the breech**
- • **Unmatched consistency**: Plastic cartridges are loaded to factory ammunition tolerances with exclusive blend of black powder substitute
- • **Eliminates risk of over-charging**
- • **Impervious to moisture**; can be stored for years
- • Ignites with 209 shotshell primer; sold separately and inserted by shooter
- • Various pre-loaded charge levels available to achieve desired velocities

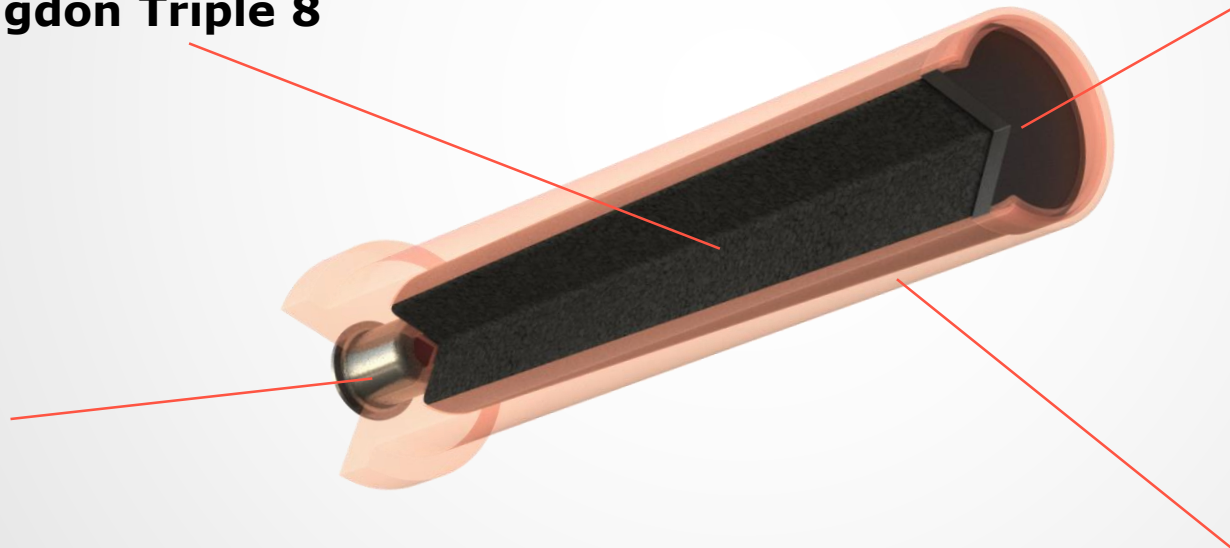


FIRE STICK™ Features

**Black Powder Substitute –
Hodgdon Triple 8**

**Polymer Pre FireStick designed with
breakable front section**

**209 Shotshell
Primer
inserted by
consumer**



**Polymer charge dimensions chosen to prevent any dangerous
combinations with existing shotgun gauges**



FIRE STICK™ System Loading Steps:

Like current muzzleloader designs, loading a breech-charging muzzleloader is a multistep process, which includes the following steps:

- (1) Engage the safety;
- (2) Load a bullet/sabot into the muzzle using a ramrod;
- (3) Seat the bullet/sabot firmly on the shelf within the barrel using a ramrod;
- (4) Open the breech by disengaging the barrel release;
- (5) Insert the encapsulated powder charge into the breech end;
- (6) Insert the primer into the encapsulated powder charge; and
- (7) Close the breech.

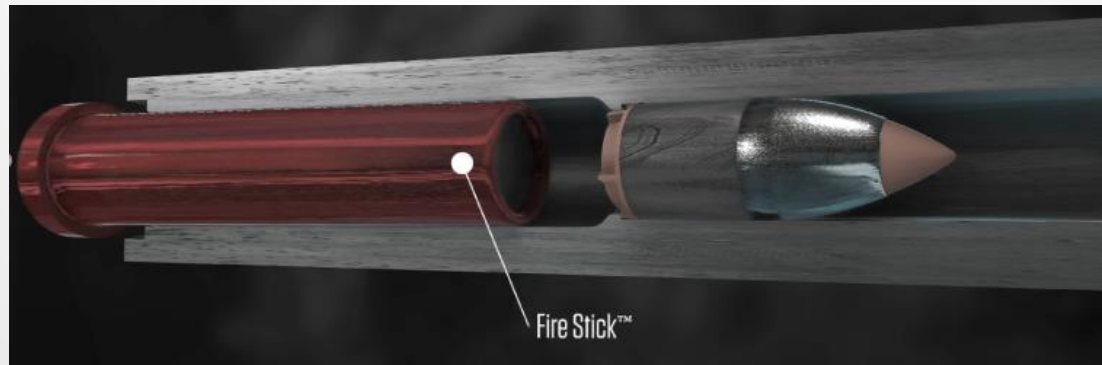
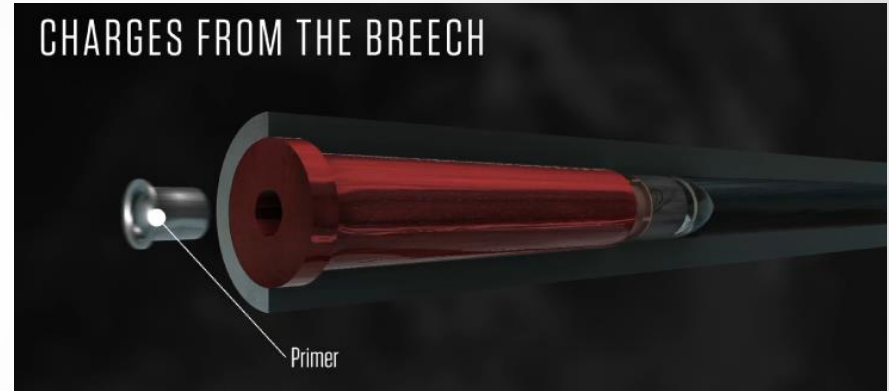


FIRE STICK™ Features

LOADS FROM THE MUZZLE



CHARGES FROM THE BREECH



Polymer charge dimensions chosen to prevent any dangerous combinations with existing shotgun gauges

209 Inline vs FIRE STICK™ system

**FIRE STICK
Rifle
Chamber**



**Inline
Muzzleloader
Chamber**

