

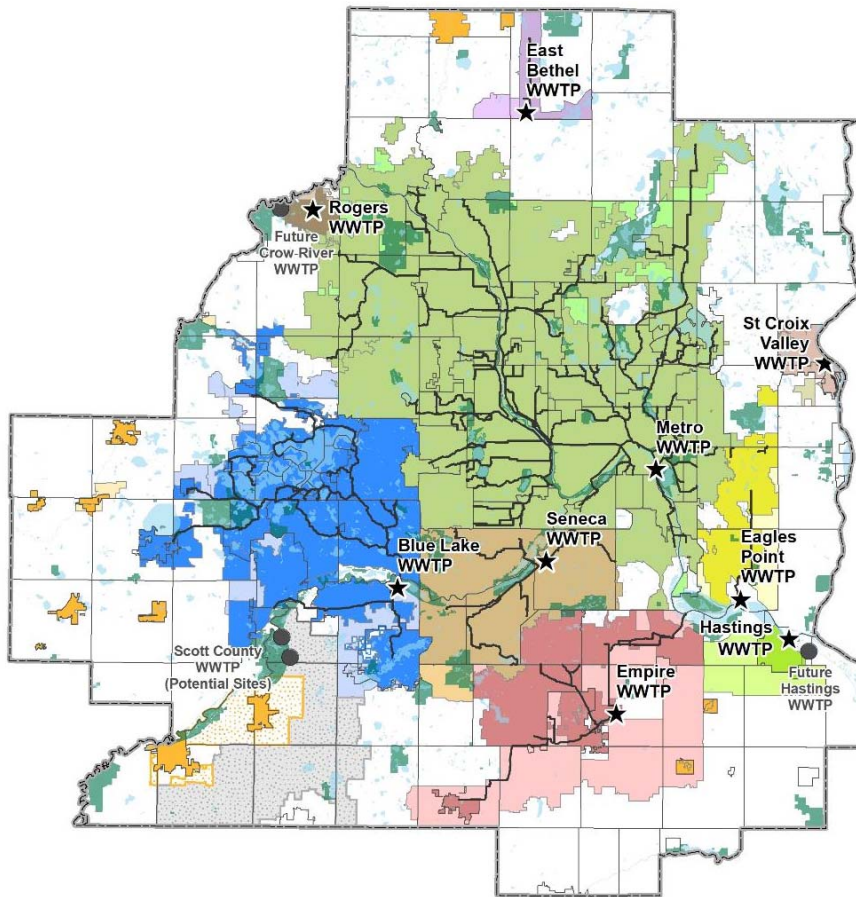
# Metropolitan Council Inflow & Infiltration Mitigation Program



**Kyle Colvin**  
Manager, Wastewater Planning & Community Programs, Metropolitan Council Environmental Services



# MCES Wastewater System



**MCES Serves ~50% of the State's Population**



Protects public health and safety



Protects the environment



Fosters the economic growth of the region

## WHO WE SERVE

7-county Twin Cities Metro Area  
111 communities  
2,800,000+ people

## OUR FACILITIES

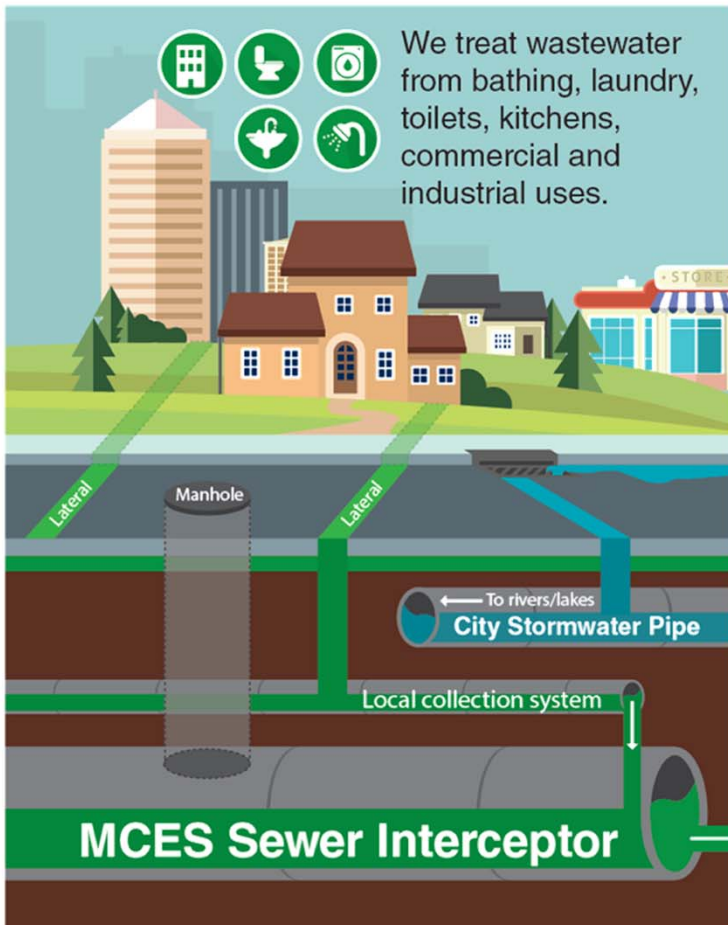
9 wastewater treatment plants  
60 pump or lift stations  
637 miles of interceptors  
250 million gallons per day (avg.)

## OUR ORGANIZATION

600+ employees  
\$7 billion in valued assets  
\$150 million / yr capital program



# Regional and Local Wastewater Systems



Our treatment process removes pollutants by converting them to small volume of organic solids, and returns clean water to the environment.

To wastewater treatment plants



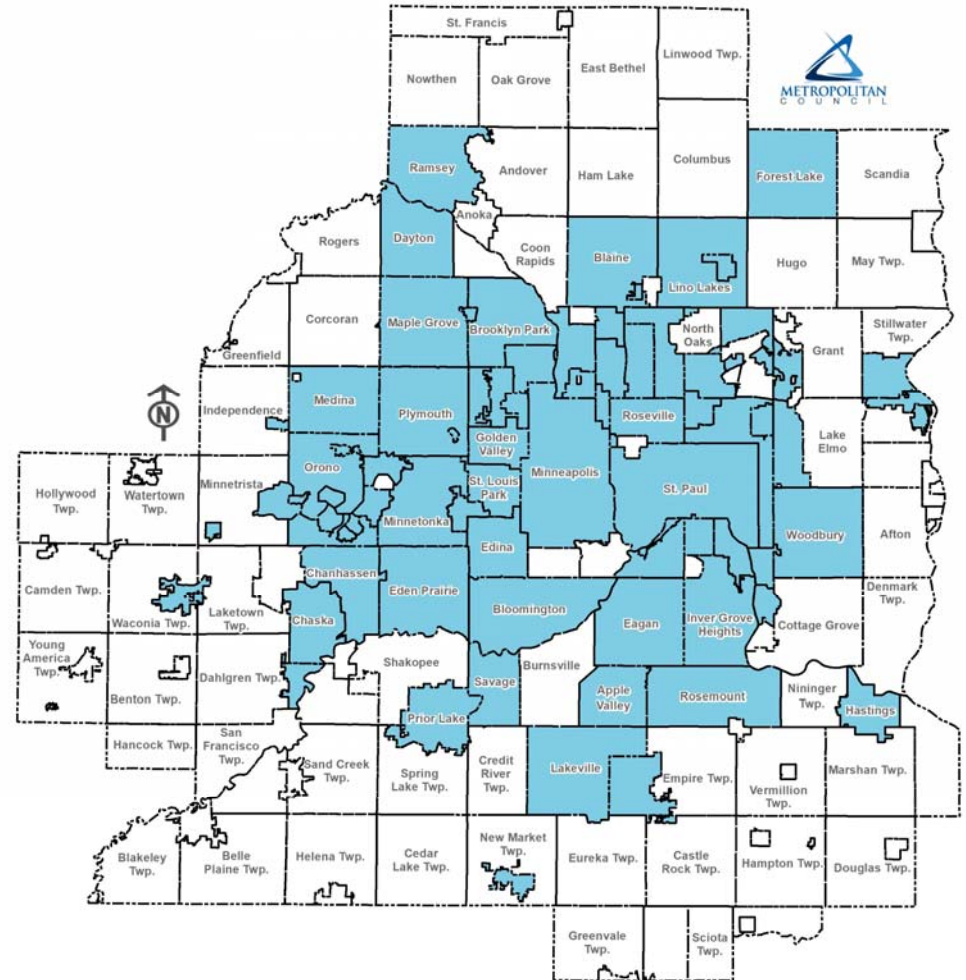
Communities Served are Customers and Partners in Protecting Public Health and the Environment



# Communities Impacted By I/I

## 81 Communities:

- |                  |                     |                     |
|------------------|---------------------|---------------------|
| Apple Valley     | Hopkins             | Oakdale             |
| Arden Hills      | Inver Grove Heights | Orono               |
| Bayport          | Lakeville           | Osseo               |
| Birchwood        | Lauderdale          | Plymouth            |
| Blaine           | Lexington           | Prior Lake          |
| Bloomington      | Lilydale            | Ramsey              |
| Brooklyn Center  | Lino Lakes          | Robbinsdale         |
| Brooklyn Park    | Little Canada       | Rosemount           |
| Carver           | Long Lake           | Roseville           |
| Centerville      | Mahtomedi           | Savage              |
| Chanhassen       | Maple Grove         | Shoreview           |
| Chaska           | Maple Plain         | Shorewood           |
| Columbia Heights | Maplewood           | South St. Paul      |
| Crystal          | Medicine Lake       | Spring Park         |
| Dayton           | Medina              | St. Anthony         |
| Deephaven        | Mendota             | St. Bonifacius      |
| Eagan            | Mendota Heights     | St. Louis Park      |
| Eden Prairie     | Minneapolis         | St. Paul            |
| Edina            | Minnetonka          | St. Paul Park       |
| Elko-New Market  | Minnetonka Beach    | Stillwater          |
| Excelsior        | Mound               | Tonka Bay           |
| Farmington       | Mounds View         | Vadnais Heights     |
| Forest Lake      | New Brighton        | Waconia             |
| Fridley          | New Hope            | Wayzata             |
| Golden Valley    | Newport             | West St. Paul       |
| Greenwood        | North St. Paul      | White Bear Township |
| Hastings         | Oak Park Heights    | Woodbury            |







# I/I Program Goals



**Protect Public Health** by avoiding backup of sewage into basements



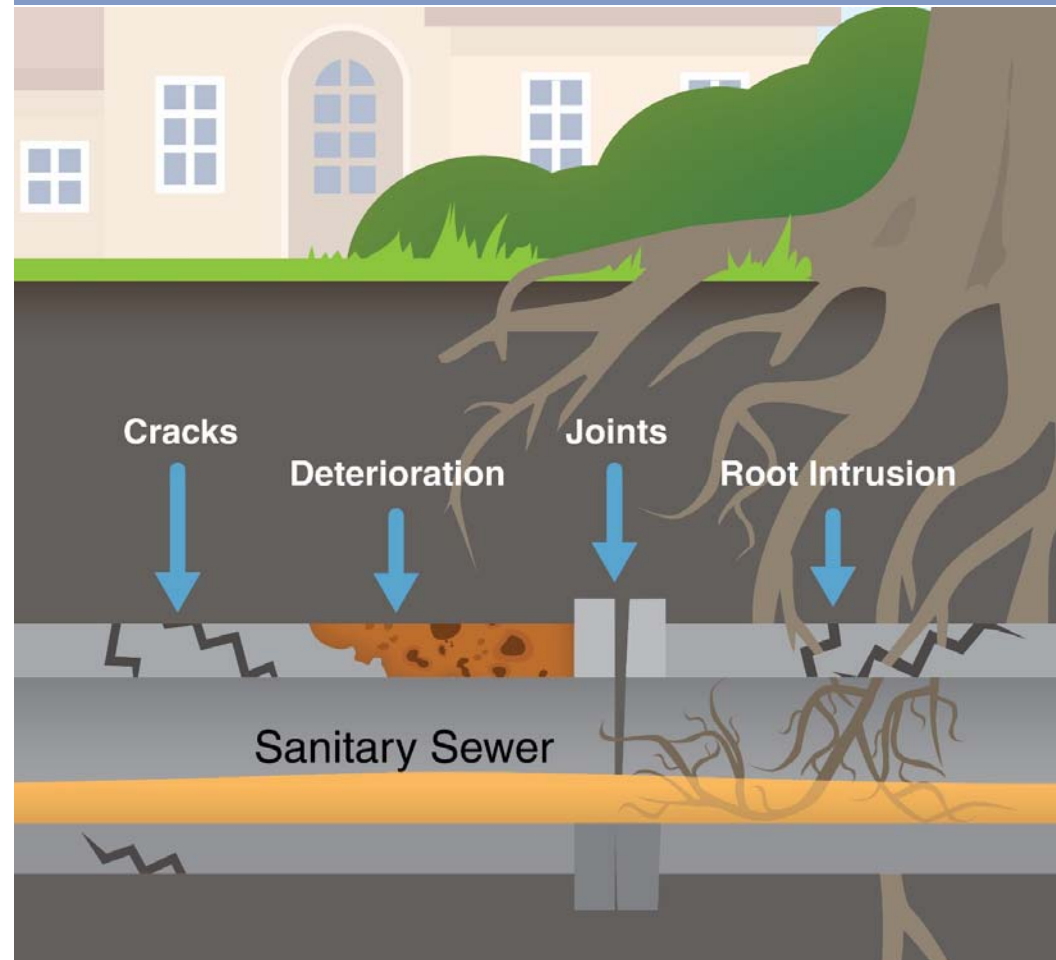
**Protect Water Quality** by avoiding spills to lakes and rivers



**Maintain Economic Efficiency** by avoiding unnecessary expansion of sewers and treatment plants

## Keep clear water out of the wastewater

Clear water – stormwater and groundwater – through I/I sources enters the wastewater systems. Excessive I/I increases the need to build larger and more expensive sewer pipes and treatment facilities.





# Timeline



**July 1987**  
Superstorm

16" of rainfall over one week in region



**1990**  
System Evaluation

~20% of annual flow from I/I



**2002**  
Interceptor Master Plan

Projected peak flow exceeds capacity with future growth projections



**2002**  
I/I Task Force

Reaffirms approach to address I/I mitigation at source



**2004**  
I/I Program Begins

55 of communities assigned work plans



**2009-2010**  
I/I Task Force 2

Deferred 2013 demand charge



**April-June 2014**  
Extreme Wet Weather

42 of communities exceed I/I goals



**2016**  
I/I Task Force 3

Identify need to continue I/I program, develop educational tools and support communities with private property mitigation activities



# Local and Regional Investments to Reduce I/I



## 2004-2020:

Communities invest over \$175M in public local collection system to reduce I/I

## 2004-2018:

MCES invests over \$100M in interceptor system improvements to reduce I/I

## 2010-2020:

\$24.2M public infrastructure bonds for grants for I/I mitigation

## 2013:

\$1M Clean Water Legacy Funds for private property I/I mitigation



# Inflow/Infiltration Program Results

## Key Results:

- Metropolitan Council has been able to **defer capacity improvements, estimated at \$1B**, that would have been required had I/I not been addressed
- Regional population has increased by 12% between 2005 and 2019 which has been accommodated within the existing regional collection system, despite increase in annual precipitation.
- Wastewater rates are competitive and are 35% below the national average of peer agencies.



**Key to public and environmental health, and wastewater affordability.**





# Governor's 2022 Bonding Bill Public Infrastructure I/I Grants

## \$5 Million



# Questions

**Kyle Colvin**

Manager, Wastewater Planning and Community Programs

[Kyle.Colvin@metc.state.mn.us](mailto:Kyle.Colvin@metc.state.mn.us)

651-602-1151



**METROPOLITAN**  
C O U N C I L

**Thank you!**