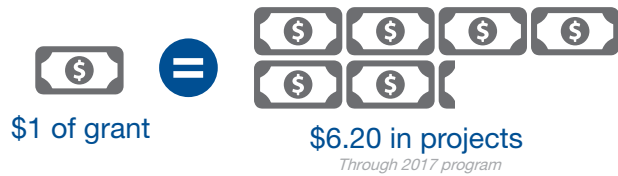


## Grant program funding needs

Working together, we can protect our health, our homes and our environment.

## About the I/I grant program

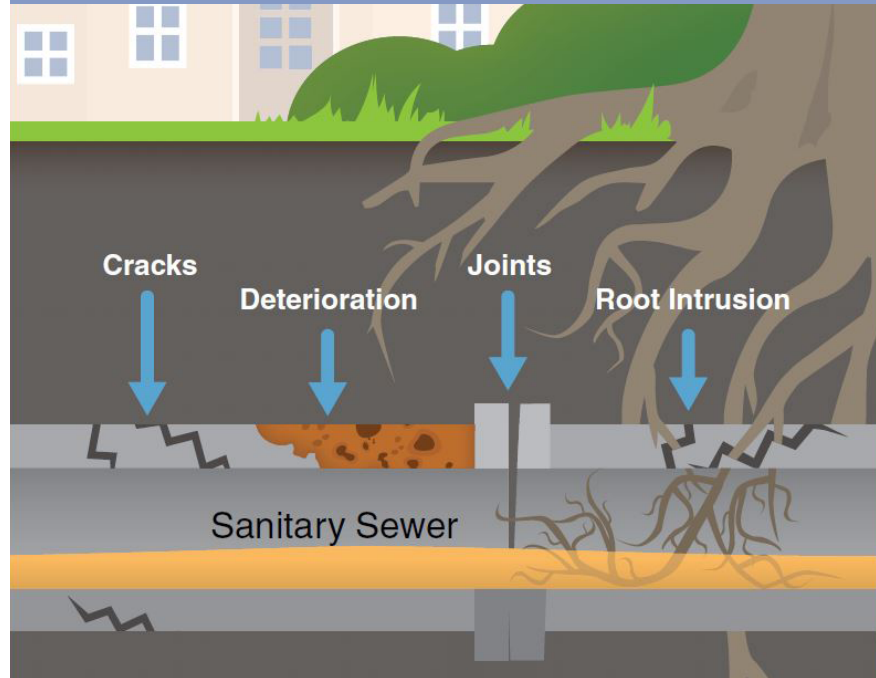
Investing to reduce I/I prevents sewage overflows into homes and waterways, reduces costs, and allows communities to invest in other priorities. The grant supports capital improvements that reduce I/I by funding up to 50% of the eligible I/I portion of construction costs. Previous grants were allocated to communities in 2010, 2012, 2014, 2015, 2017, and 2018.



The 2020 state bonding bill included a \$5 million state bond grant. Grants from this program will cover work in 2021 and 2022.

## Keep clear water out of the wastewater

Clear water – stormwater and groundwater – through I/I sources enters the wastewater systems. Excessive I/I increases the need to build larger and more expensive sewer pipes and treatment facilities.



## Benefits of the I/I grant program

**Protects public and environmental health** by preventing sewer overflows to basements and waterways.

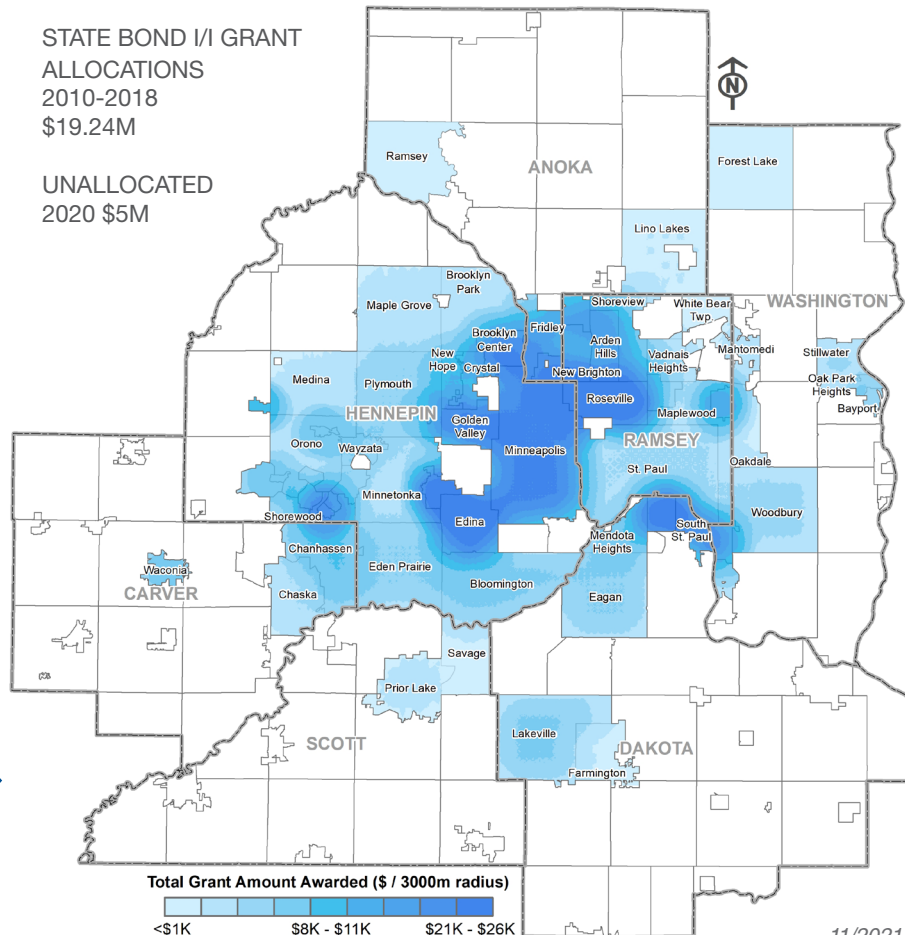
**Allows our economy to grow** and prosper without the cost of building larger infrastructure.

**Saves money** by reducing the amount of water that needs to be transported and treated.

## Grants invested across the region

STATE BOND I/I GRANT ALLOCATIONS 2010-2018 \$19.24M

UNALLOCATED 2020 \$5M

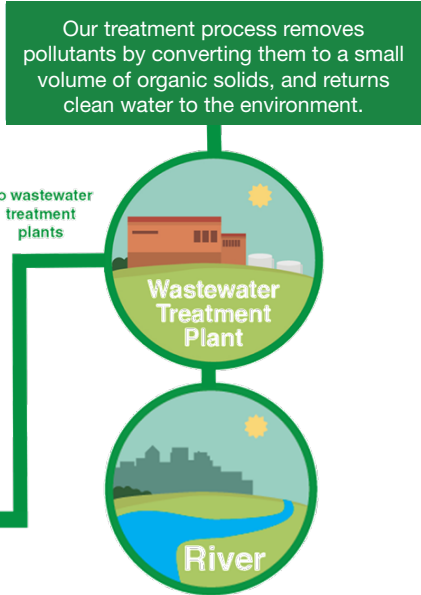
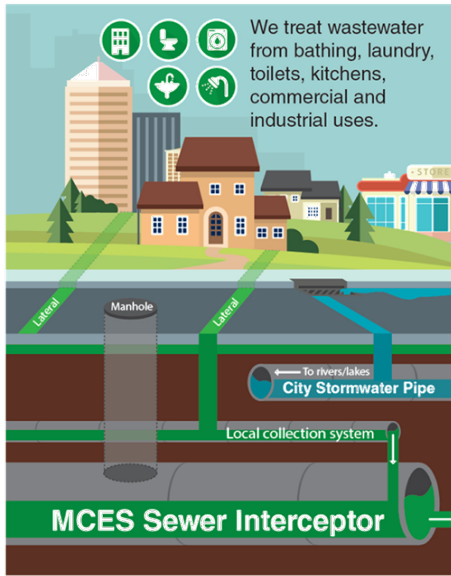


## Regional approach, local results

Communities in the Twin Cities metro area and the Metropolitan Council have been working for decades to address sources of I/I in city and regional sewer infrastructure.

## Funding equitably and sustainably

- A two-part grant allocation process ensures all communities will receive significant funding towards eligible project costs.
- Grants are awarded at the end of the projects to allocate all funding.
- Reducing I/I at the source is more cost effective than increasing capacity and helps wastewater rates remain competitive.

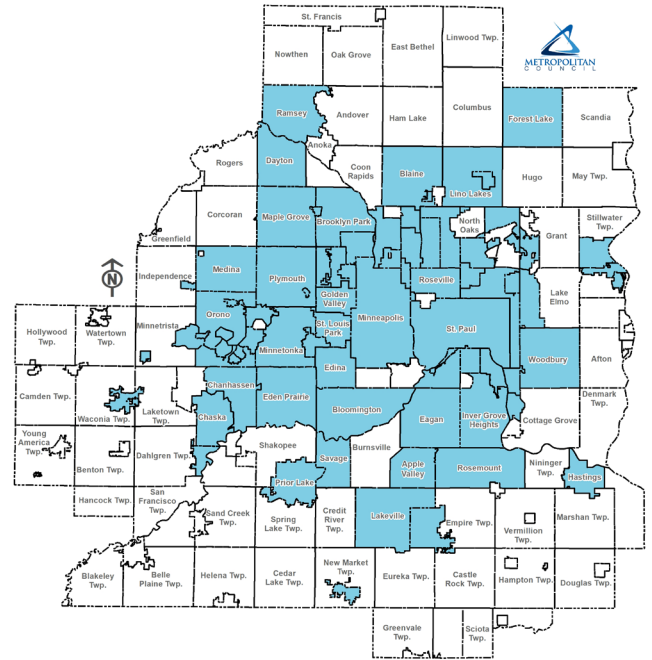


## Regional and Local Wastewater Systems

- 111 communities** served by the regional wastewater system
- 7500 miles** of privately owned sewer laterals
- 5000 miles** of community owned sewers
- 640 miles** of MCES interceptor pipe
- 9** wastewater treatment plants

## Communities Impaired by I/I:

- |                  |                     |                  |                     |
|------------------|---------------------|------------------|---------------------|
| Apple Valley     | Excelsior           | Medicine Lake    | Rosemount           |
| Arden Hills      | Farmington          | Medina           | Roseville           |
| Bayport          | Forest Lake         | Mendota          | Savage              |
| Birchwood        | Fridley             | Mendota Heights  | Shoreview           |
| Blaine           | Golden Valley       | Minneapolis      | Shorewood           |
| Bloomington      | Greenwood           | Minnetonka       | South St. Paul      |
| Brooklyn Center  | Hastings            | Minnetonka Beach | Spring Park         |
| Brooklyn Park    | Hopkins             | Mound            | St. Anthony         |
| Carver           | Inver Grove Heights | Mounds View      | St. Bonifacius      |
| Centerville      | Lakeville           | New Brighton     | St. Louis Park      |
| Chanhassen       | Lauderdale          | New Hope         | St. Paul            |
| Chaska           | Lexington           | Newport          | St. Paul Park       |
| Columbia Heights | Lilydale            | North St. Paul   | Stillwater          |
| Crystal          | Lino Lakes          | Oak Park Heights | Tonka Bay           |
| Dayton           | Little Canada       | Oakdale          | Vadnais Heights     |
| Deephaven        | Long Lake           | Orono            | Waconia             |
| Eagan            | Mahtomedi           | Osseo            | Wayzata             |
| Eden Prairie     | Maple Grove         | Plymouth         | West St. Paul       |
| Edina            | Maple Plain         | Prior Lake       | Woodbury            |
| Elko-New Market  | Maplewood           | Ramsey           | White Bear Township |
|                  |                     | Robbinsdale      |                     |



## Program Goals

- PROTECT PUBLIC HEALTH**  
By avoiding backup of sewage into basements
- PROTECT WATER QUALITY**  
By avoiding spills to lakes and rivers
- MAINTAIN ECONOMIC EFFICIENCY**  
By avoiding unnecessary expansion of sewers and treatment plants

## Results

- The region's population increased 2005-2020
- Average precipitation increased 2005-2020
- Average flow steady 2005-2020

