



Commissioner
Paul Schnell

Capital Resources
Administrator
Dave Wisnewski

Department of Corrections Capital Budget Presentation

Minnesota's Correctional Facilities



MCF-Shakopee
built 1986
capacity: 656



MCF-Faribault
opened 1989
capacity: 2,026



MCF-Lino Lakes
built 1963
capacity: 1,325



MCF-Red Wing
built 1889
capacity: 45-A, 88-J



MCF-Rush City
built 2000
capacity: 1,018



MCF-Oak Park Heights
built 1982
capacity: 444



MCF-St. Cloud
built 1889
capacity: 1,058



MCF-Stillwater
built 1914
capacity: 1,484



MCF-Togo
built 1955
capacity: 90



MCF-Moose Lake
built 1938
capacity: 1,057



MCF-Willow River
built 1951
capacity: 177



DOC by the Numbers

Prisons: 11

Buildings: 331

Age of Facilities: 30 to 131 years old

Square feet for facilities: 7.5 million sq. ft.

DOC district supervision offices: 17

Employees: approximately 4,300

Total general fund budget: \$1.2 billion

Overview of the DOC: Obligations

- Securely house the state's incarcerated population 24/7/365
- Provide healthcare, including substance abuse, sexual offender, mental health, and other rehabilitative treatment programs
- Planning for transitions and other reentry services
- Education – both GED and higher education – and job skills
- Inspection and licensure of county jails and juvenile detention facilities
- Oversee and facilitate pass-through funding to community supervision providers
- Provide community supervision services in a variety of Minnesota counties

95% of those who are incarcerated will re-enter their communities. The work of the DOC must be to promote public safety by serving system-involved individuals in the most impactful way.

2022 DOC Bonding Requests



1	2	3	4
Asset Preservation System-wide	Dakota Building Program Space Renovation/ Addition MCF Faribault	Program Space Addition and Renovation MCF Shakopee	Program Space Repurposing of E Building MCF Lino Lakes
\$58.1M GO + \$5.174M Cash	\$8M	\$15.1M	\$6.4M

Asset Preservation

Agency
Priority **1**

\$58.1 million

- **Protect** state's investment in existing facilities
- **Ensure the safety** of correctional officers, staff, incarcerated individuals, and the public
- **Reduce costly repairs** utilizing a proactive approach
- **Create environmental safety** with adequate heating, ventilating, plumbing and electrical systems



*MCF-Stillwater
Industry
Building*



*Windows in
Living Units*

Asset Preservation

Request:

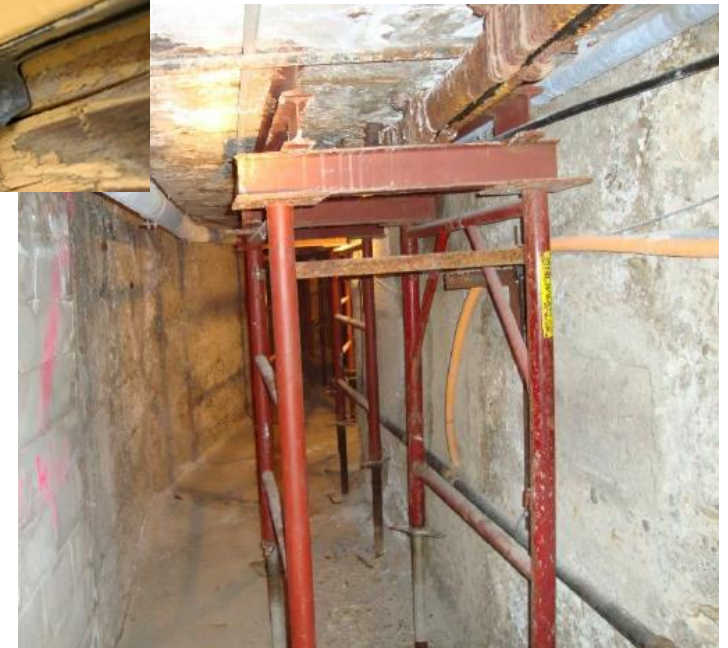
- **\$58.1M in GO Bonds**
- **\$5.174 million in cash for non-bondable components**

2021 Facility Condition Audit Found:

- **\$644 Million** total in Deferred Maintenance
- **\$150+ Million** total needed overall for high priority projects throughout the Department of Corrections Building stages of disrepair:
 - 19 in crisis condition
 - 63 in poor condition
 - 152 in average condition



*Deteriorating Windows
in Living Units*



Failing Utility Tunnel

Asset Preservation



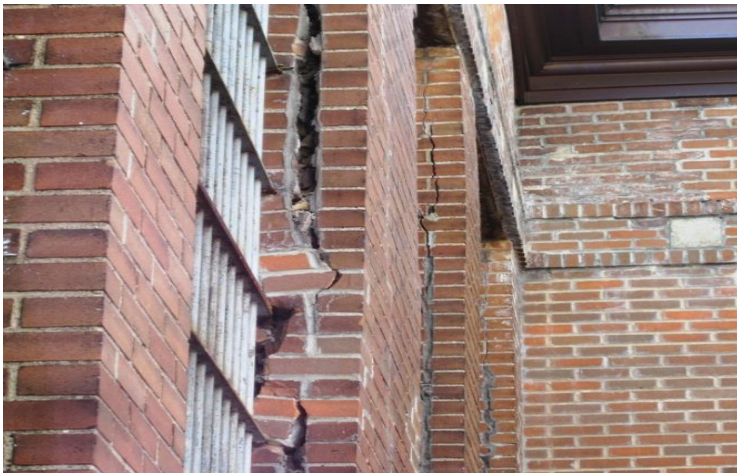
MCF-Oak Park Heights Piping



MCF – Red Wing Tuck Pointing



MCF – Shakopee Brick/Stair



MCF – Stillwater Brick Failure



MCF – St. Cloud Wall Deterioration

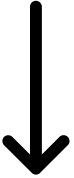


MCF – Moose Lake Storage

MCF Faribault – Fern Building



April 2022
Storm Damage



↑
Deferred
Maintenance
Examples →

Mission:

Transform Lives for a Safer Minnesota

Dave Wisnewski
Capital Resource
Administrator

david.wisnewski@state.mn.us

Emily Lefholz
Legislative Director
emily.lefholz@state.mn.us