



## MINNESOTA JUDICIAL BRANCH OVERVIEW

Senate Public Safety Budget Division  
and Senate Crime Prevention and  
Public Safety Policy Division  
January 20, 2005

1

---

---

---

---

---

---

---

---



## Judicial Branch: A Few Facts

Size: 2,900 Employees  
298 Judges

Locations: 100+ Statewide

Budget: \$264 Million\*

Caseload: 2 million cases

\*FY 06

2

---

---

---

---

---

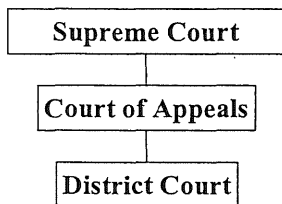
---

---

---



## Organizational Structure



3

---

---

---

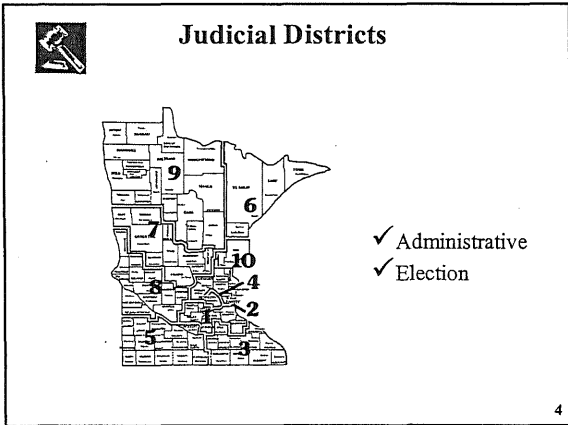
---

---

---

---

---




---

---

---

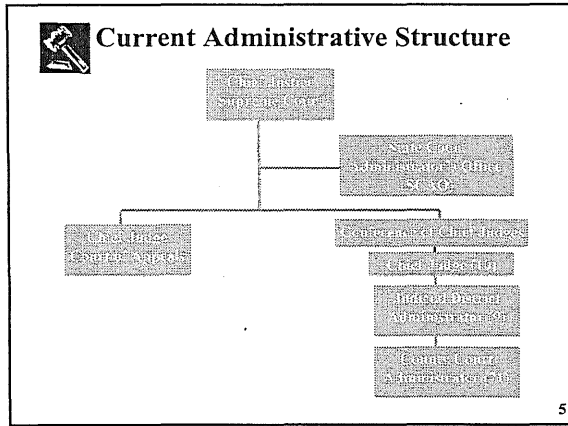
---

---

---

---

---




---

---

---

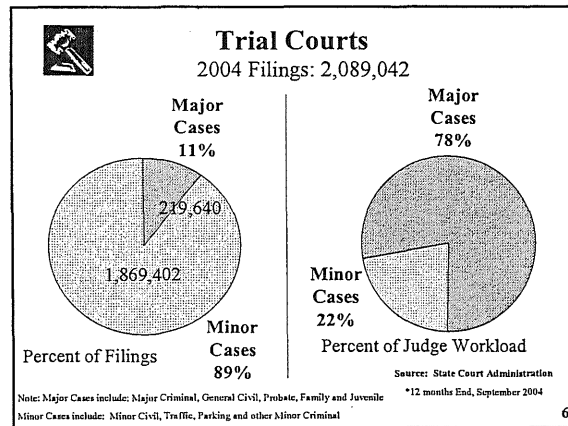
---

---

---

---

---




---

---

---

---

---

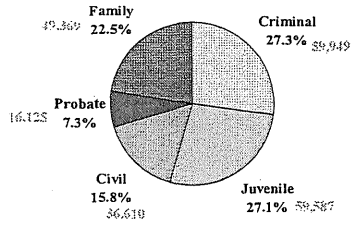
---

---

---



### Major Case Filings 2004\*



Source: State Court Administration  
\*12 Month End, September 2004

7

---

---

---

---

---

---

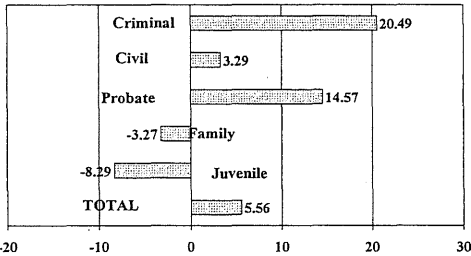
---

---



### Statewide Percent Change in Workload

2000-2004\*  
Based on WCL



\*Rolling year Oct. 2003 - Sept. 2004

8

---

---

---

---

---

---

---

---



### Evaluation: Legislative Auditor

"...Trial courts are functioning well."

Meet or exceed case processing times of other states

Carry caseloads 49% higher than comparable states

...filings of major cases increased twice as fast as expenditures.

9

---

---

---

---

---

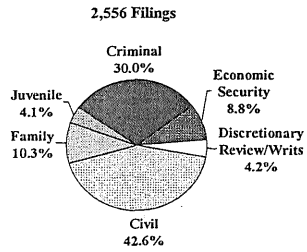
---

---

---



### Court of Appeals Filings 2004\*



Based on State Court Administration  
\*2004 Annual Report, November 2004

---

---

---

---

---

---

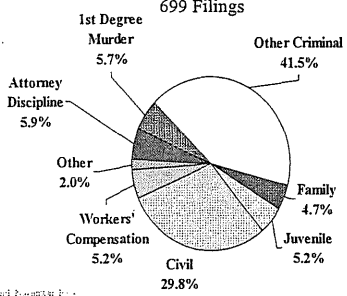
---

---



### Supreme Court Filings 2004\*

#### Original and PFR Cases



© 2004 State Court Administration

---

---

---

---

---

---

---

---



### State Funding

### Transition and Transformation

---

---

---

---

---

---

---

---



## Study and Support

- Supreme Court Task Force on Financing of the Trial Courts
- Association of Minnesota Counties
- Governor's Advisory Council on State and Local Relations
- Minnesota Business Partnership
- Citizen's League
  
- Trial Courts in 30 states are state funded

13

---

---

---

---

---

---

---

---



## GOALS

- Equitable levels of judicial services
- Budgetary Accountability: Consolidation of policy-making and funding responsibilities
- Administrative unity
- Cost efficiency/effectiveness
- Property Tax Relief

14

---

---

---

---

---

---

---

---



## Phased Transfer

- |      |  |
|------|--|
| 1990 | Eighth District Pilot<br>District employees<br>Local trial court information systems<br>Law Clerks |
| 1992 | Ct Reporters<br>Law Clerk and Ct Reporter Expenses   |
| 1993 | Jury Costs   |
| 2000 | District 8 - Permanent<br>Districts 5,7,& 9<br>Transcripts   |

15

---

---

---

---

---

---

---

---



### Phased Transfer (cont.)

2001	Statewide Costs for: Guardians Ad Litem Court Interpreters Rule 20 Commitment Exams In forma Pauperis
2003	Districts 2 and 4
2004	Districts 1 and 3
2005	Districts 6 and 10

---

---

---

---

---

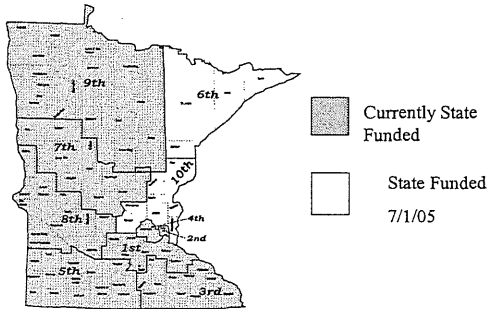
---

---

---



### Transition Status




---

---

---

---

---

---

---

---



### Phased Transfer (cont.)

Annual Court Costs Transferred:

- FY90-93                    \$31,203,000
- FY01-05                    \$88,616,000
- Scheduled FY06         \$23,137,000

---

---

---

---

---

---

---

---



### Efficiencies as result of State Funding

- Work and staff shared across county lines
- Consolidation of Court Administrator positions
- Consolidation of Judicial District Administrator position
- Development of uniform practices and streamlined services
- Development of Court Performance Standards and Allocation of Resources Based on Statewide Priorities

19

---

---

---

---

---

---

---

---



### GAL System – One Example

- Federal/State Mandate
- Prior to State Funding
  - 40% of children had no representation
  - 56 independent programs
  - Under-funded
  - Lack of training
  - Lack of supervision/accountability
- System Reforms
  - Establish statewide policy goals
  - Allocate limited resources to statewide priorities

20

---

---

---

---

---

---

---

---



### GAL System – One Example (cont.)

- Outcomes
  - Increased GAL Coverage to 97% in abuse and neglect
  - Improved Quality Assurance
  - Increased statewide consistency in services

21

---

---

---

---

---

---

---

---



### Administrative Consolidation

- Establishment of Judicial Council as of July 1, 2005
  - Replaces Conference of Chief Judges and Intercourt Committee
  - Chaired by Chief Justice
  - Representation from all court levels
  - Responsible for administrative policy making for Judicial Branch including strategic plan, budgets, human resources, technology and core services.

22

---

---

---

---

---

---

---

---



### Judicial Branch Innovations

- Mental Health Courts
- Community Courts
- Children’s Justice Initiative
- Early Family Case Management
- MNCIS/CriMNet
- Drug Courts

23

---

---

---

---

---

---

---

---



### Judicial Branch Challenges

- Growth of criminal cases, especially those related to methamphetamines
- State Funding Transition
- Diminishing ability to serve the public

24

---

---

---

---

---

---

---

---