

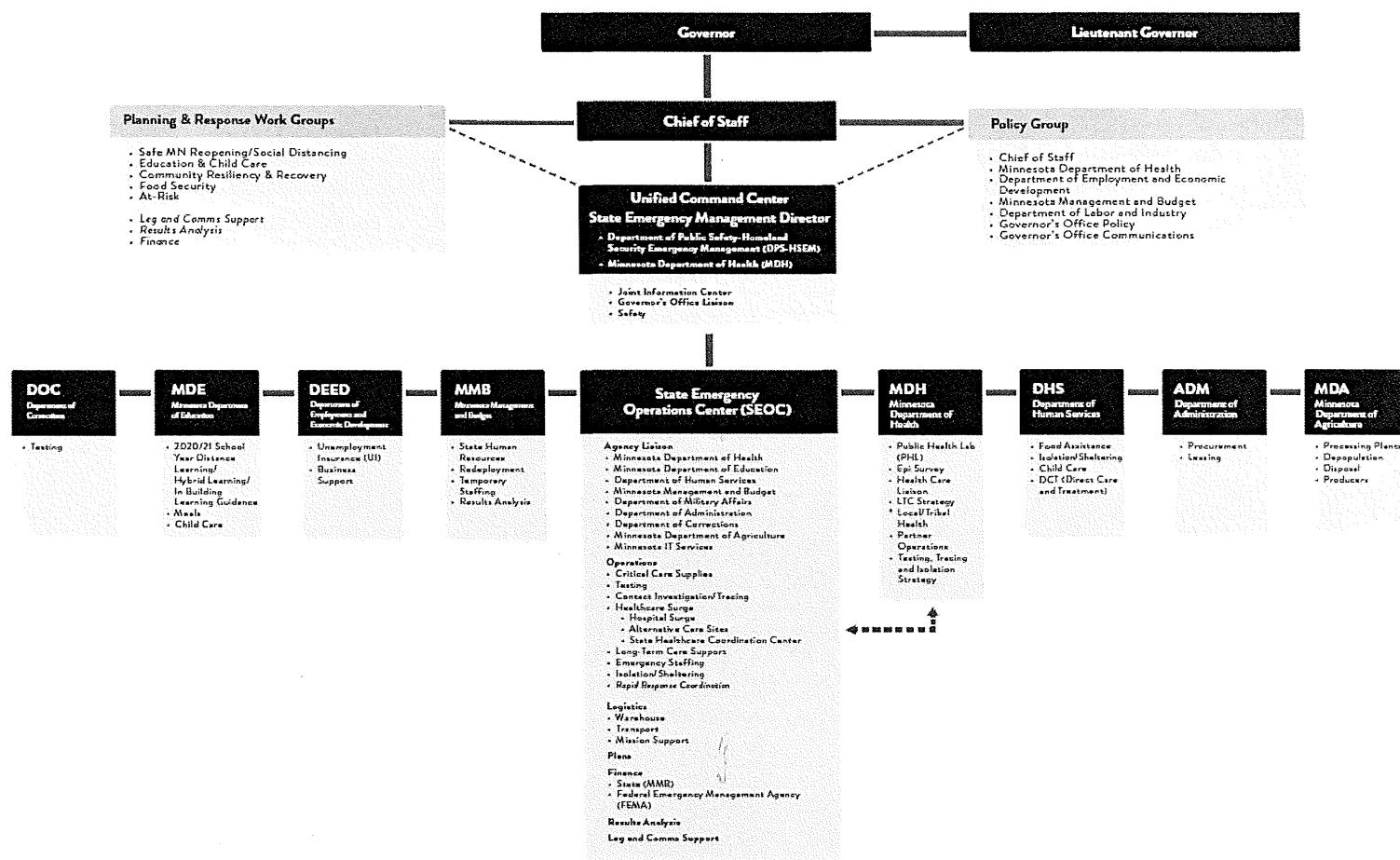
**STAY SAFE MN**

# **Presentation to the House Subcommittee on Legislative Process Reform**

# State Emergency Operations Center (SEOC) Emergency Response

# COVID-19 Response Organizational Chart

STAY SAFE MN



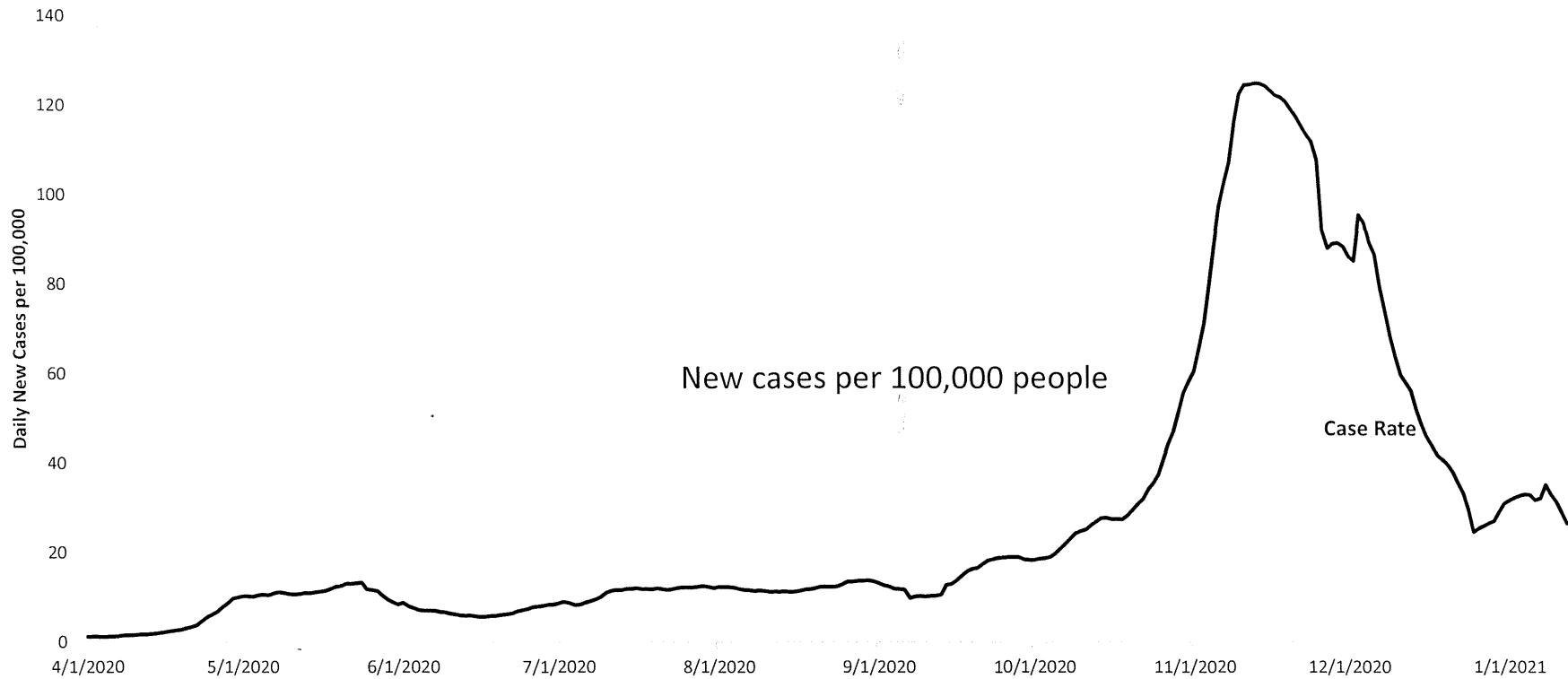
1/21/2021

# COVID-19 Pandemic Emergency



# COVID-19 By the Numbers: Minnesota

STAY SAFE **MN**



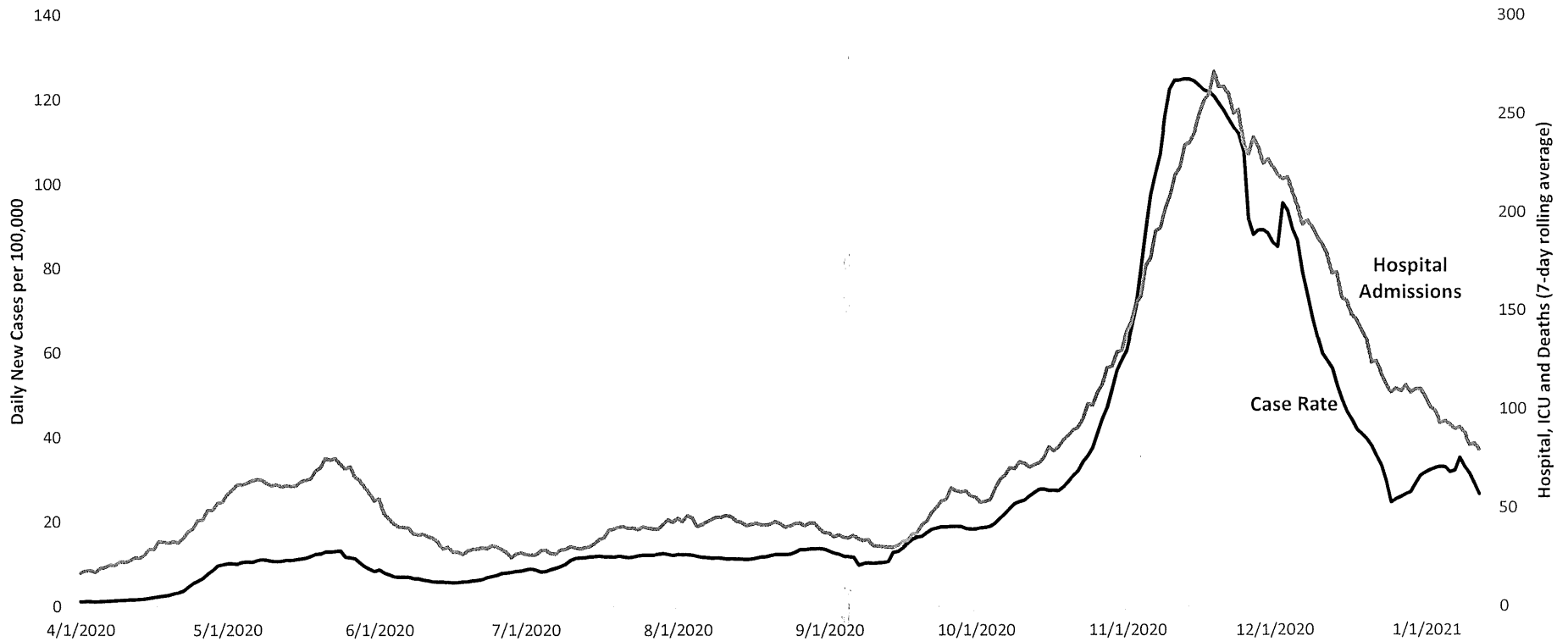
Source: MDH COVID-19 Case Data, current as of 1/19/21

1/21/2021

One Minnesota | [mn.gov/covid19](https://mn.gov/covid19)

# COVID-19 By the Numbers: Minnesota

STAY SAFE MN



Source: MDH COVID-19 Case Data, current as of 1/19/21

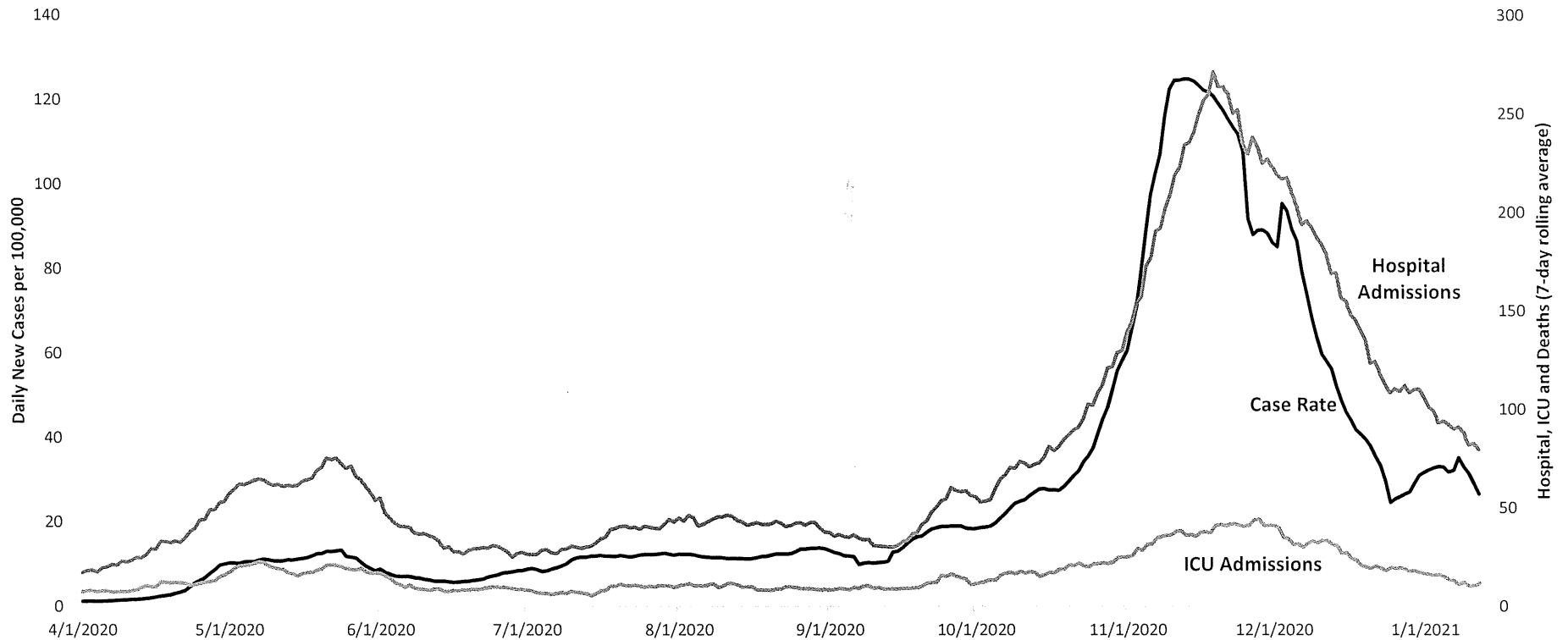
1/21/2021

One Minnesota | [mn.gov/covid19](https://mn.gov/covid19)

6

# COVID-19 By the Numbers: Minnesota

STAY SAFE **MN**



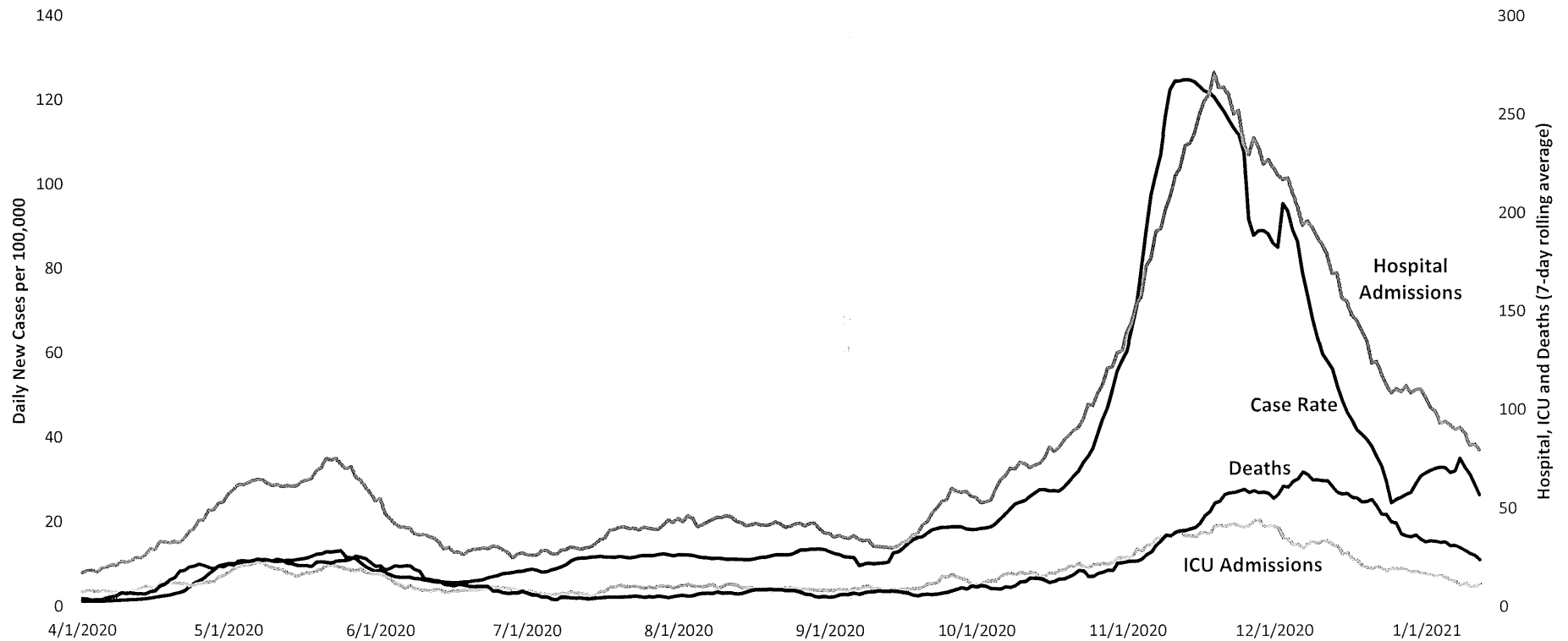
Source: MDH COVID-19 Case Data, current as of 1/19/21

1/21/2021

One Minnesota | [mn.gov/covid19](https://mn.gov/covid19)

# COVID-19 By the Numbers: Minnesota

STAY SAFE MN



Source: MDH COVID-19 Case Data, current as of 1/19/21

1/21/2021

One Minnesota | [mn.gov/covid19](https://mn.gov/covid19)

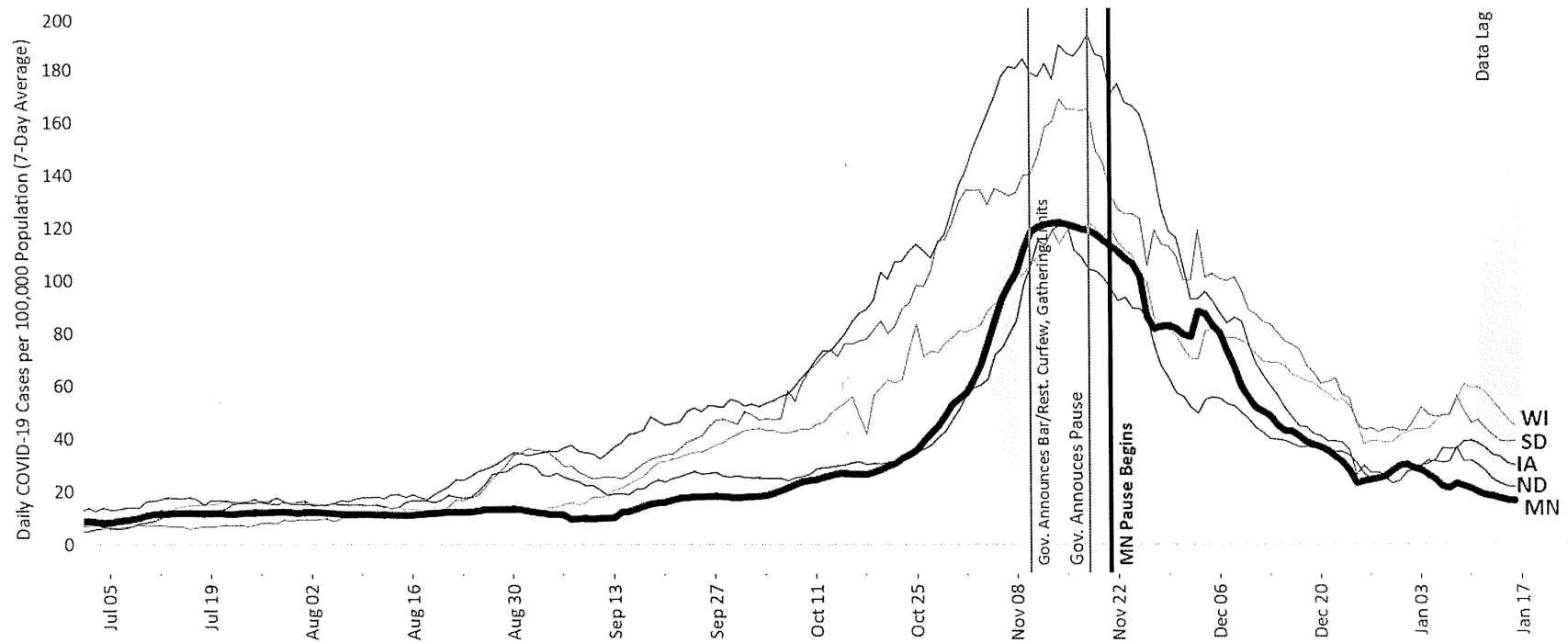
8



# Minnesota Compared to our Neighbors: Cases

STAY SAFE MN

New Cases per 100,000 Population (7-Day Rolling Average)



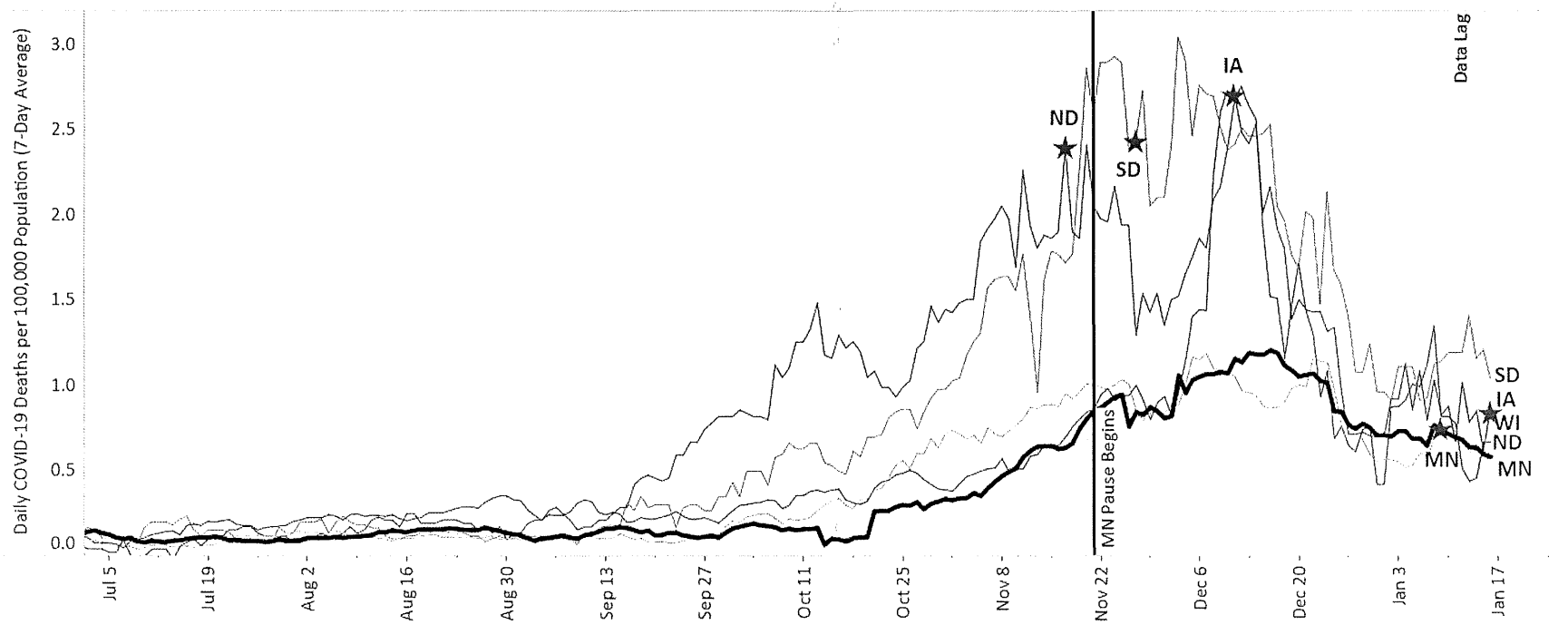
Source: covidtracking.com (report date) and MN daily case data (specimen date). Data is at the patient level. Cases may include non-residents of the state and some states include antigen-positive cases in their estimates (e.g., MN, SD, and WI). State resident population is based on 2018 5-year ACS estimates.

Yellow highlight denotes period of time (11/3-11/8/2020) with 70+ degree weather in most of the State.

# Minnesota Compared to our Neighbors: Deaths

STAY SAFE MN

New Deaths per 100,000 Population (7-Day Rolling Average)

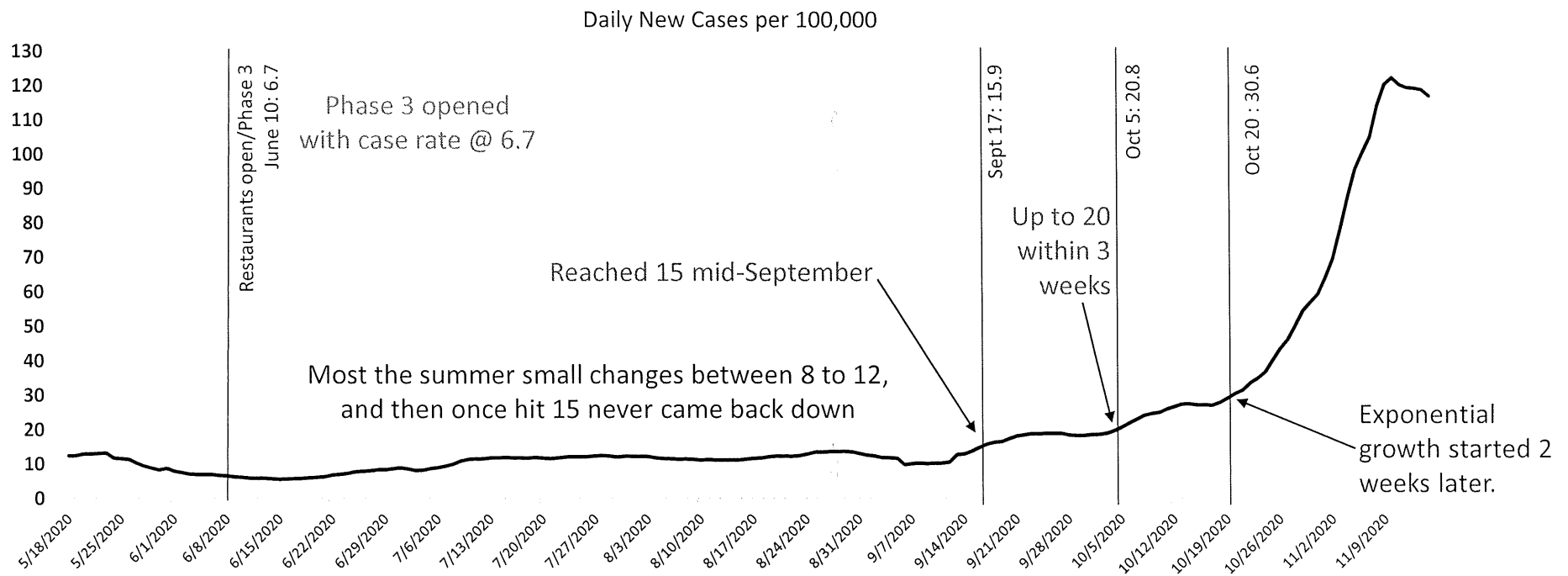


Sources:MDH Health Economics Program analysis of covidtracking.com and MDH daily case data. Deaths include both confirmed and probable deaths; however, some states do not distinguish between confirmed and probable deaths, or only started to distinguish this data after a duration of time. For MN, deaths are by report date rather than date of death in order to make comparisons as comparable as possible across states. Furthermore, cases, deaths and tests may include non-residents for certain states. State resident population is based on 2018 5-year ACS estimates.

Red stars indicate the point at which states reported the number of cumulative deaths equal to one out of every 1000 people.

# Transition to Exponential Growth Happens with Little Warning

STAY SAFE MN

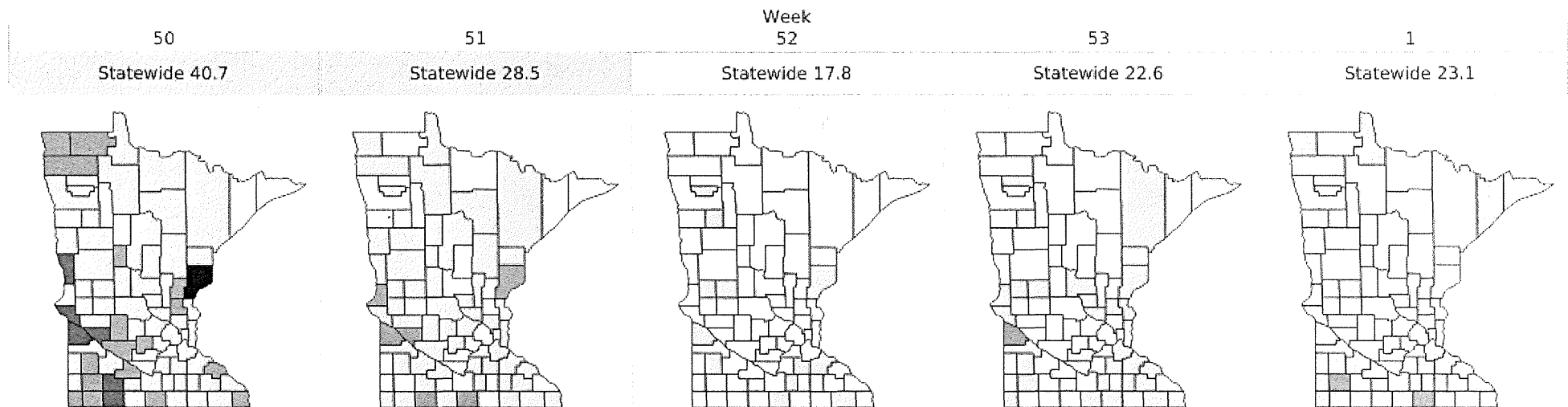


# Cases Spread Across Minnesota

STAY SAFE **MN**

## Number of Confirmed and Probable Cases per 10,000 People by Week in Minnesota Counties

Week 50 beginning 12/6/2020 through Week 1 ending 1/9/2021 (Date of Specimen)



Source: MDH COVID-19 Case Database. Data current as of 1/20/2021.

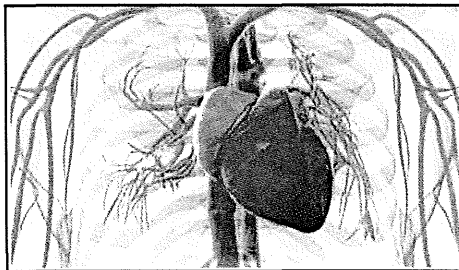
Data beginning 12/6/2020 through 1/9/2021. Week is MMWR week, which is the week of the epidemiologic year for which the National Notifiable Diseases Surveillance System (NNDSS) disease report is assigned for the purposes of MMWR disease incidence reporting and publishing. Positive cases include both confirmed cases (PCR positive) and probable cases (Antigen positive).



# COVID 19: A Serious Disease

STAY SAFE **MN**

**“Corona Virus Hijacks the Body from Head to Toe, Perplexing Doctors”** *The Wall Street Journal*, 5/7/2020



- COVID-19 “Long-haulers”
- ACE-2 receptors on many tissues
- Loss of taste and/or smell
- Encephalitis
- Cardiac disease and heart attacks
- Kidney disease
- COVID Toes
- Large vessel strokes in people ages 30-40 years old, particularly males
- Kawasaki-like disease in children, a multi-system inflammatory disease with vasculitis

# Consequences Rise with Case Rates

STAY SAFE **MN**

Current →

Daily Case rate per 100,000	Average Daily Cases	Weekly Cases	Weekly New Admissions (4.9% of cases)	Weekly New ICU Stays (15.7% of admissions)	Weekly Health Care Workers - Acute Care	Weekly Health Care Workers - Congregate Care	Weekly Deaths (1.5% of cases)
10	550	3,850	190	30	200	140	<b>60</b>
15	800	5,600	280	40	290	210	80
20	1,100	7,700	380	60	400	290	110
30	1,700	11,900	590	90	630	450	<b>170</b>
40	2,200	15,400	760	120	810	580	220
50	2,800	19,600	970	150	1,030	730	290
60	3,300	23,100	1,140	180	1,210	860	340
75	4,100	28,700	1,420	220	1,510	1,070	420
100	5,500	38,500	1,900	300	2,020	1,440	560
150	8,300	58,100	2,870	450	3,050	2,170	<b>850</b>

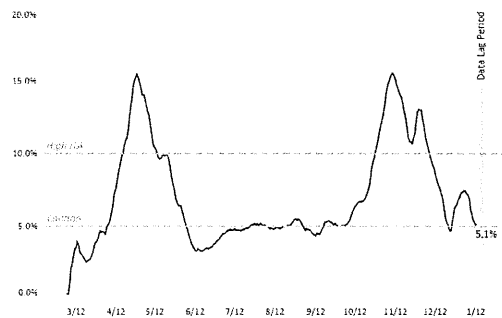
Updated 1/19; Admissions and deaths based on specimen dates 11/15 to 12/15; health care workers based on MMWR week 51.

# MN Public Health Risk Measures

STAY SAFE **MN**

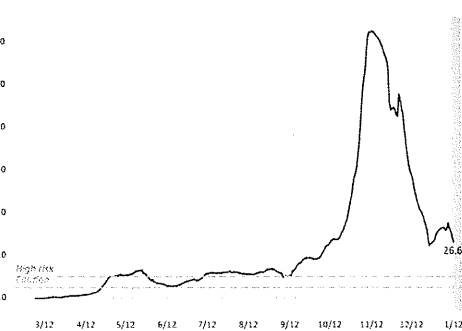
## POSITIVITY RATE

% OF TESTS COVID POSITIVE  
7-DAY ROLLING AVERAGE



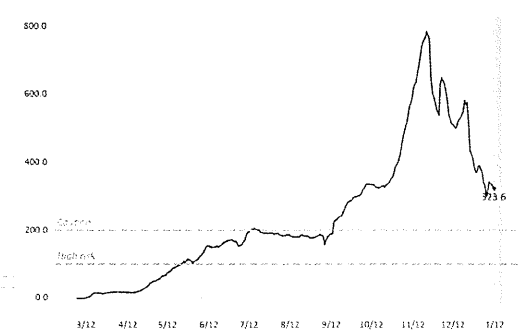
## CASE GROWTH

DAILY NEW CASES PER 100,000 RESIDENTS  
7-DAY ROLLING AVERAGE



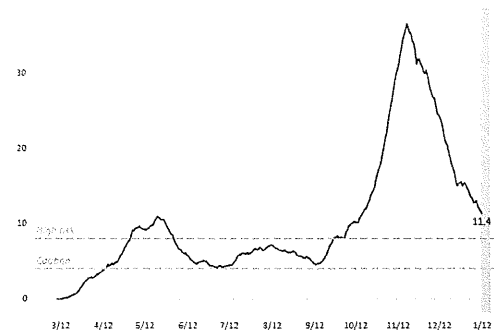
## TESTING RATE

WEEKLY COVID TESTS PER 10,000 RESIDENTS  
7-DAY ROLLING AVERAGE



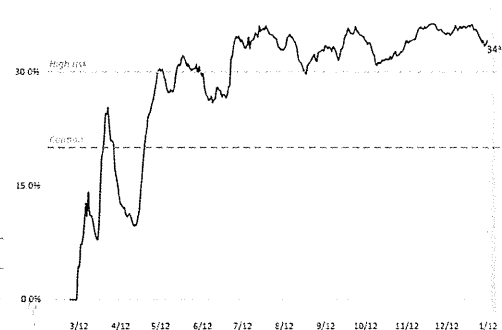
## HOSPITALIZATION RATE

NEW COVID+ HOSPITAL ADMISSIONS PER 100,000 RESIDENTS  
WEEKLY | 7-DAY ROLLING AVERAGE



## COMMUNITY SPREAD

% OF CASES WITH NO KNOWN EXPOSURE  
7-DAY ROLLING AVERAGE



Source: <https://mn.gov/covid19/data/response-prep/public-health-risk-measures.jsp>

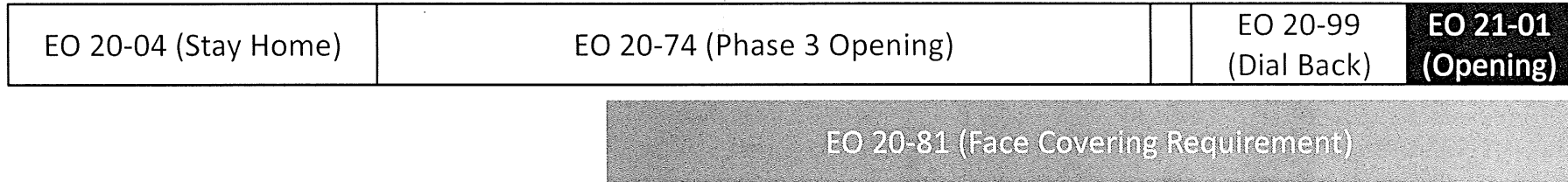
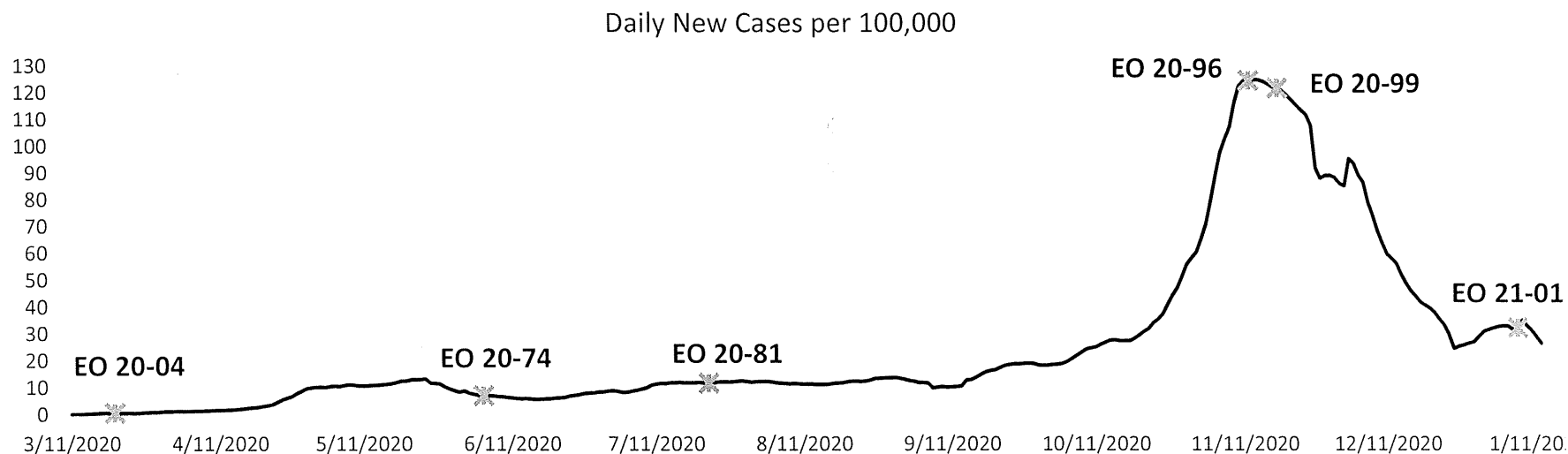
1/21/2021

# Executive Orders An Overview



# Policy Implementation and Cases

STAY SAFE **MN**



Source: MDH COVID-19 Case data, current as of 1/19/21.

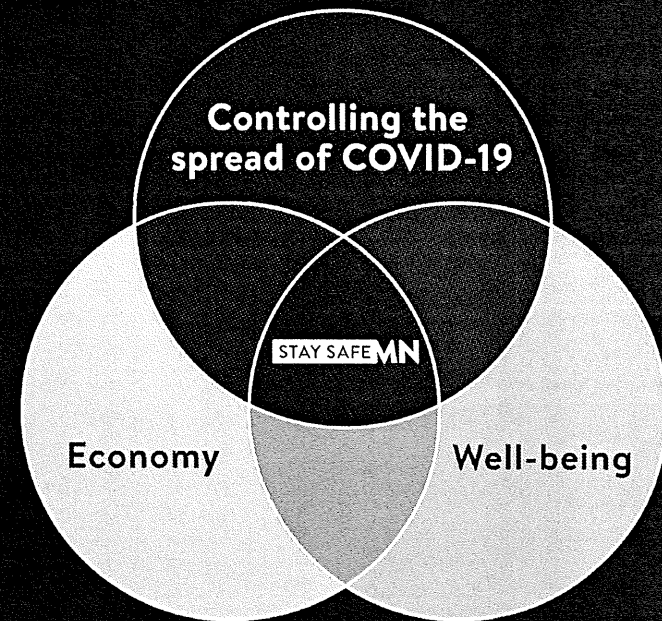
1/21/2021

17

**Stay Safe MN**

# The Stay Safe MN Approach

- Listen - to the best advice of the public health experts serving our state.
- Balance - the spread of COVID-19, the economy, and the personal well-being of all Minnesotans.
- Protect – our hospital capacity.
- Cautiously loosen restrictions – to support communities, families, and small businesses.



# Stay Safe Guiding Principles

STAY SAFE MN

Protect public and worker health - limit morbidity and mortality due to COVID-19

Protect hospital capacity

Give every business in Minnesota an opportunity to build our economy in a way that is safe, and builds consumer confidence

Integrate equity into the reopen design and the COVID-19 response - recognize that the negative health impacts have fallen disproportionately on communities of color

1/21/2021



# Risk Predictors

STAY SAFE **MN**

Goal – to prevent illness and mitigate the spread

How close  
are people  
to each  
other?

How long  
are people  
together?

How  
predictable  
is the  
movement  
of people?

Are people  
masked?

How many  
households  
are mixing?

Are you  
indoors or  
outdoors?

# Outreach and Engagement

STAY SAFE **MN**

## Regular Walz Administration Statewide Outreach Calls

- Restaurants, Bars, and Breweries
- Large Venues, Hotels,
- Small and Medium Entertainment
- Gyms and Fitness Organizations
- Cultural Organizations, museums
- Agricultural Groups
- Sports Organizations
- Chambers of Commerce, business leaders
- Religious Organizations, Faith Leaders
- Event Planners, Hospitality Groups



# COVID-19 Preparedness Plans

STAY SAFE **MN**

- ✓ Health screenings
- ✓ Social distancing
- ✓ Worker hygiene and source controls
- ✓ Cleaning, disinfecting, and ventilation protocols
- ✓ Administrative and occupancy controls
- ✓ Communication and training for clients and customers

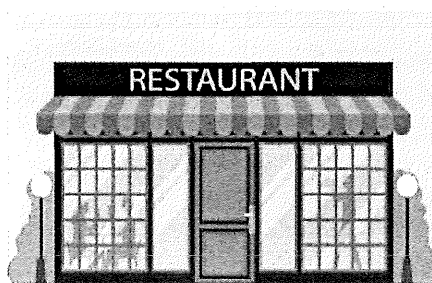


# Stay Safe Guidance

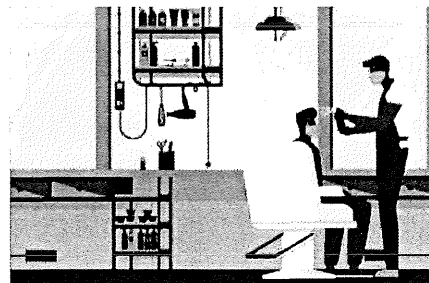
STAY SAFE **MN**



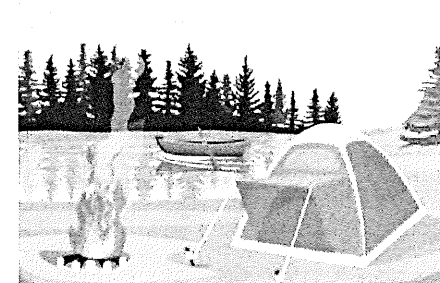
All Businesses



Restaurant and Bar Businesses



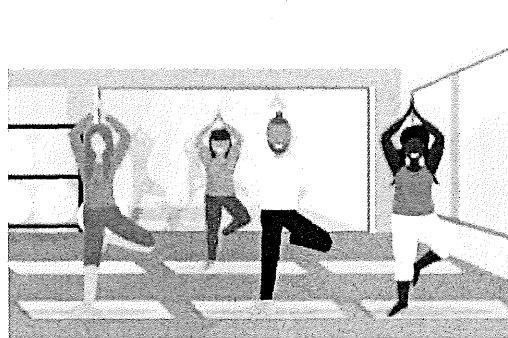
Personal Care and Salon Businesses



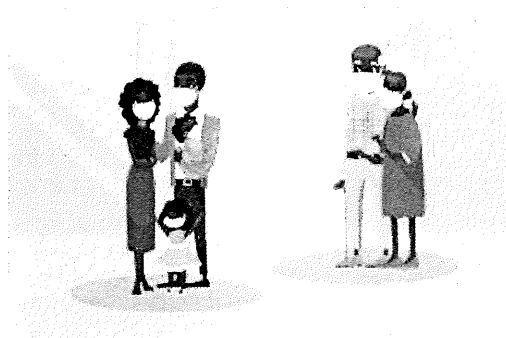
Outdoor Recreation Entities



Organized Sports



Gyms, Studios, and Fitness Centers

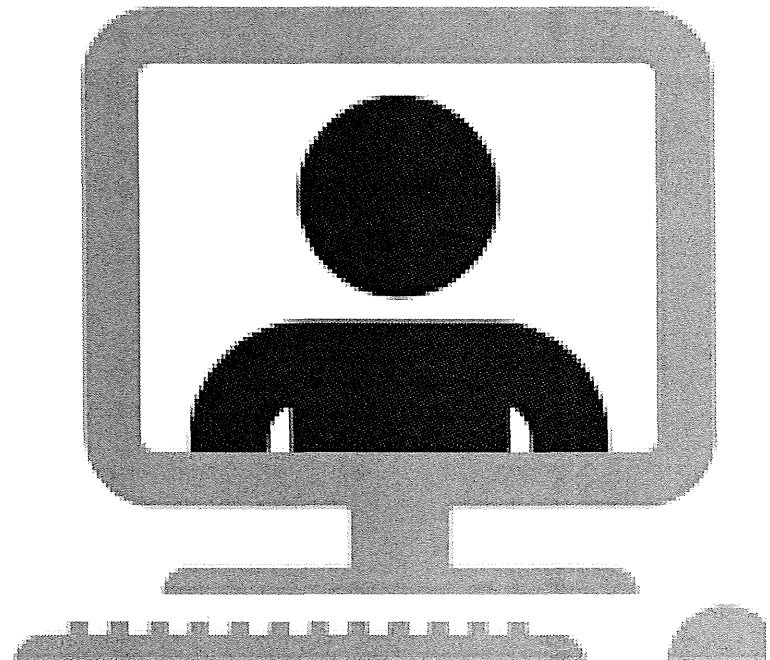


Places of Worship Entities

# Technical Assistance and Support

STAY SAFE **MN**

- Initial Call to Describe Each EOs to sector stakeholders
- Statewide Webinars
- Presentations to Membership Organizations
- Individual Consultation
- Discussions on Future Designs

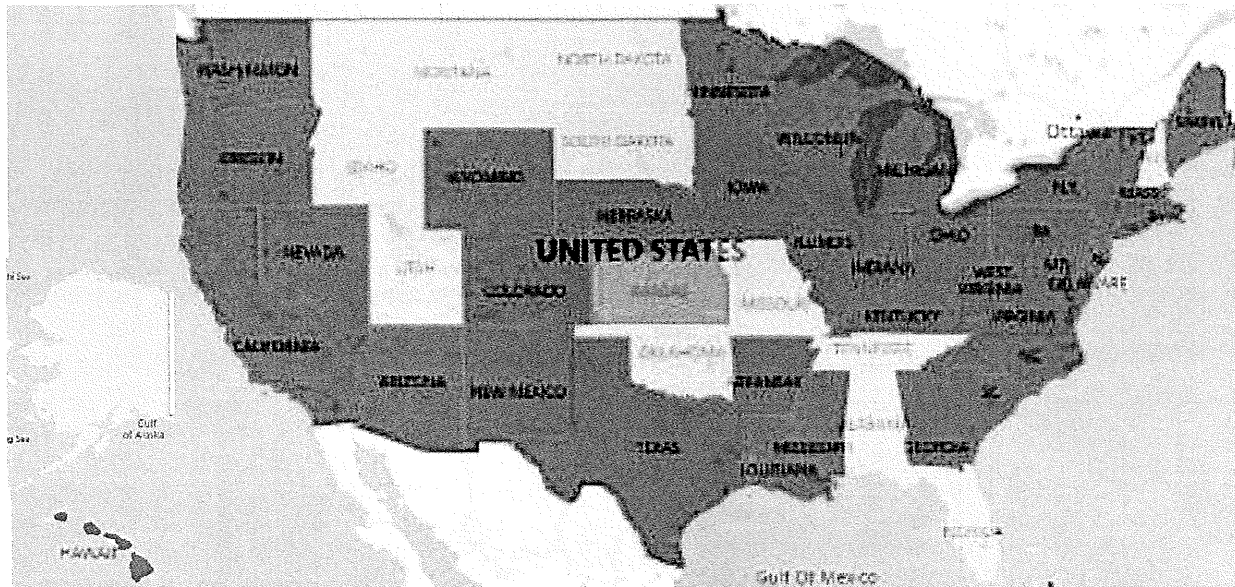




# Stay Safe MN Regulations Compared to Other States

# State by State: Indoor Social Gathering

STAY SAFE **MN**

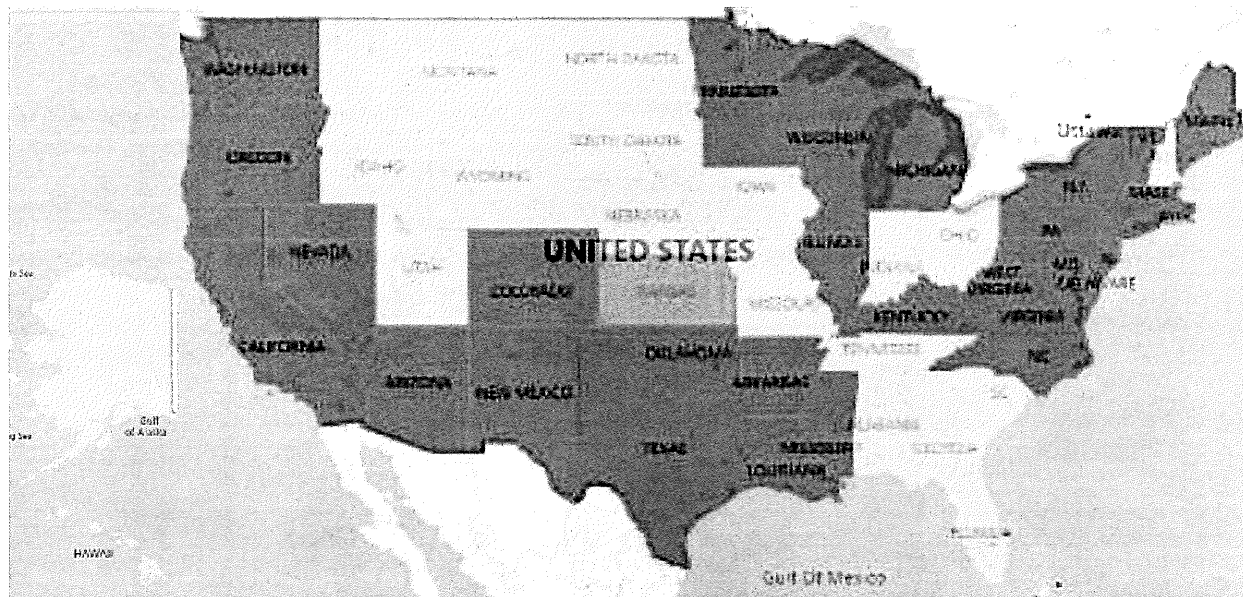


- Regulated
- Not Regulated
- County Specific



# State by State: Indoor Restaurant and Bar Service

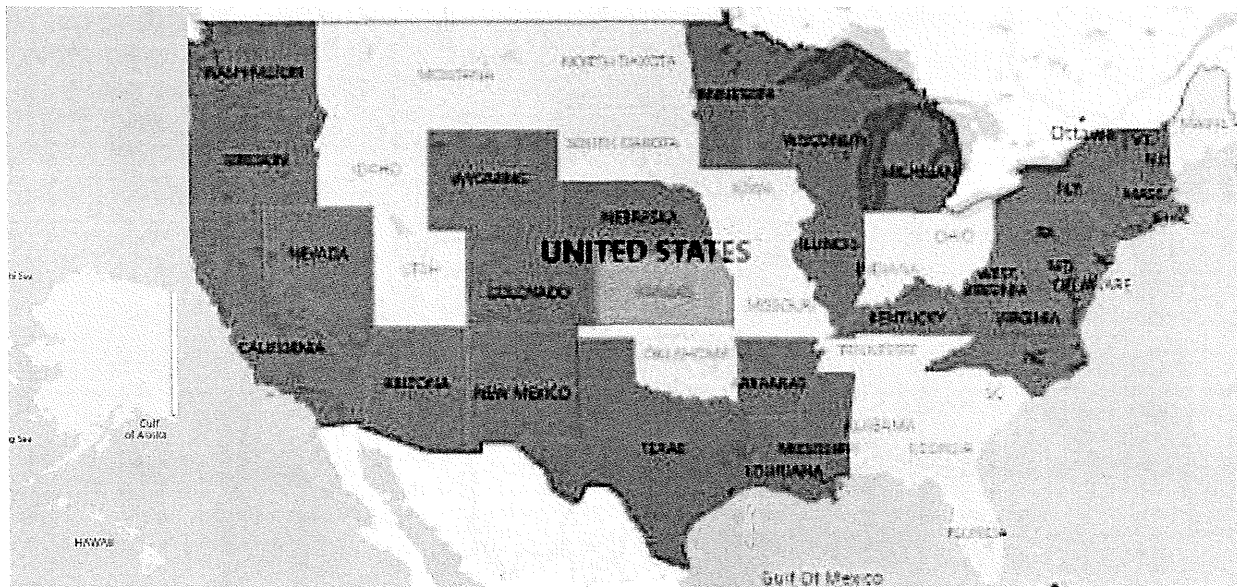
STAY SAFE MN



- Regulated
- Not Regulated
- County Specific

# State by State: Gyms and Fitness

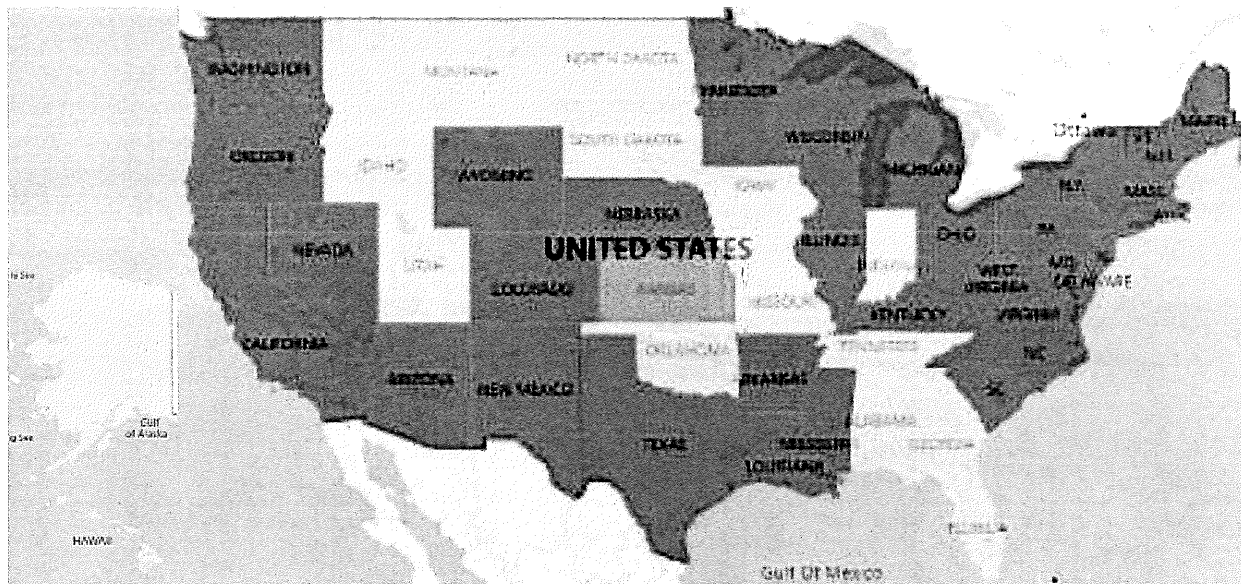
STAY SAFE **MN**



- Regulated
- Not Regulated
- County Specific

# State by State: Indoor Venues

STAY SAFE **MN**



Regulated

Not Regulated

County Specific

# Face Covering Requirement

# Face Covering Requirement: Key Mitigation Strategy

STAY SAFE **MN**

## Executive Order 20-81 – Effective July 25, 2020

- People in Minnesota are required to wear a face covering in all indoor businesses and public indoor spaces, unless alone
- Workers are required to wear a face covering when working outdoors in situations where social distancing cannot be maintained

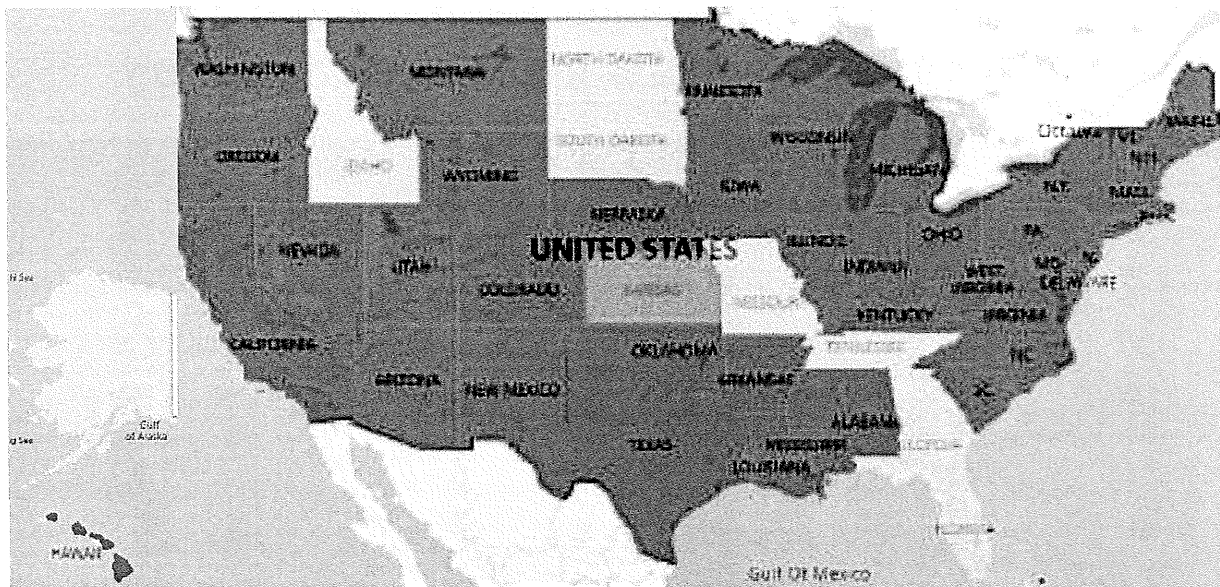


State by State: Mask Mandate

STAY SAFE MN

# State by State: Mask Mandate

STAY SAFE MN



Regulated  
Not Regulated  
County Specific

Regulated  
Not Regulated  
County Specific

Regulated  
Not Regulated  
County Specific

## **CDC Recommendations: Face Covering to Prevent Transmission of COVID-19**

**STAY SAFE MN**

Masks are primarily intended to reduce the emission of virus-laden droplets - especially relevant for asymptomatic, infected wearers who feel well and may be unaware of their infectiousness”

\*Estimated to account for more than 50% of transmissions

Masks also help reduce inhalation of these droplets by the wearer - “filtration for personal protection”

**Community benefit of masking for SARS-CoV-2 control  
is due to the combination of these effects;  
the benefit increases with increasing numbers of people  
using masks consistently and correctly.**



**Over 25 new studies done in 2020  
conclude the effectiveness of masking.**  
COVID-19: Considerations for Wearing Masks | CDC

- Experimental and epidemiological data support community masking to reduce spread
- Encourages adoption of universal masking policies in combination with interventions like social distancing, hand hygiene, and adequate ventilation

# Minnesotans Wear Face Coverings

STAY SAFE **MN**

June 1, 2020

**47%**

January 15, 2021

**77%**

**63% Increase**

1/13/21

37

