

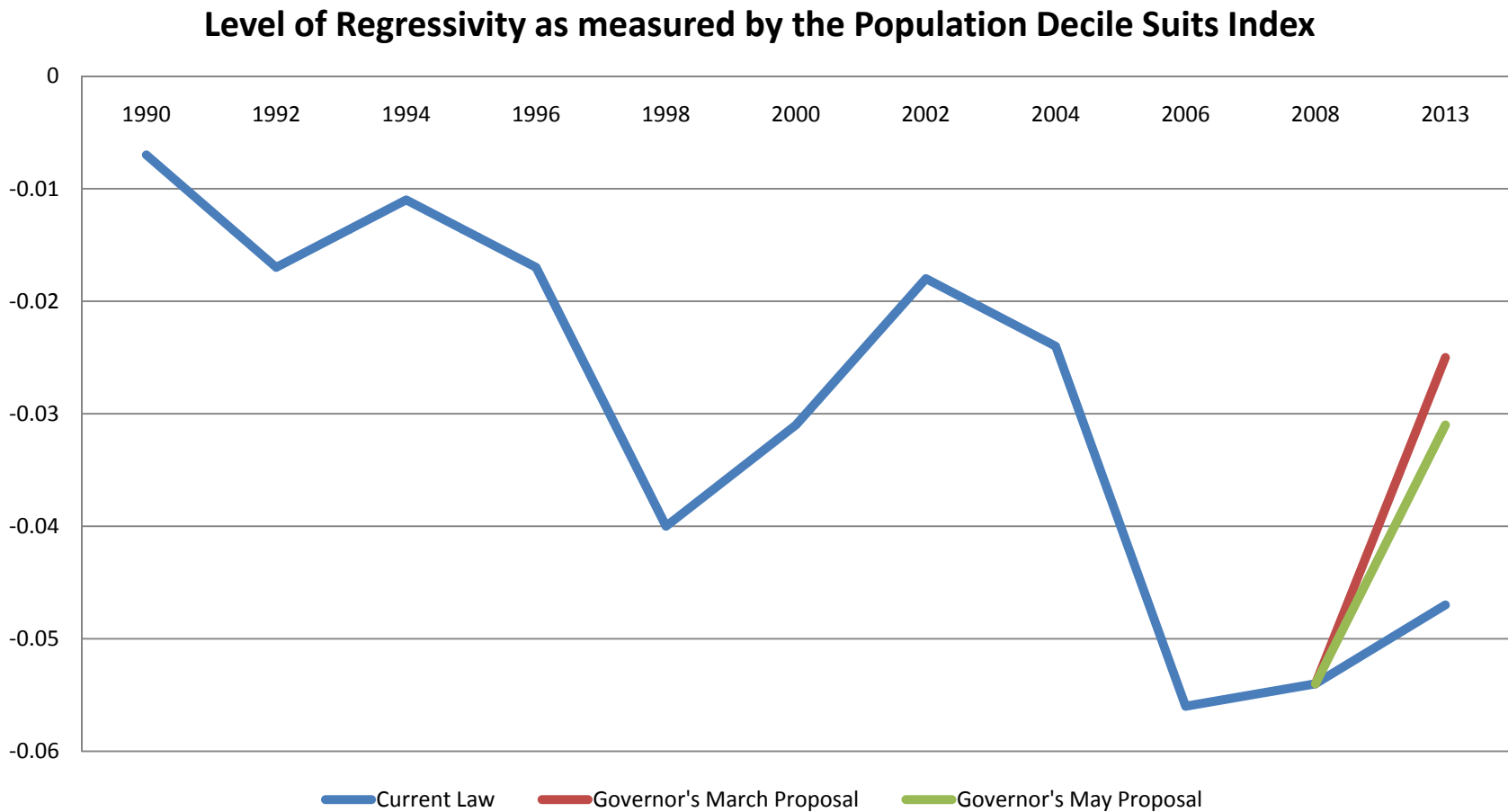
MINNESOTA • REVENUE

The logo for the Minnesota Department of Revenue, featuring the text "MINNESOTA • REVENUE" in a green serif font above a horizontal green bar with a faint, repeating pattern of the state of Minnesota.

Responses to Legislative questions from the Tuesday, June 7, 2011 hearing of the Legislative Commission on Planning and Fiscal Policy

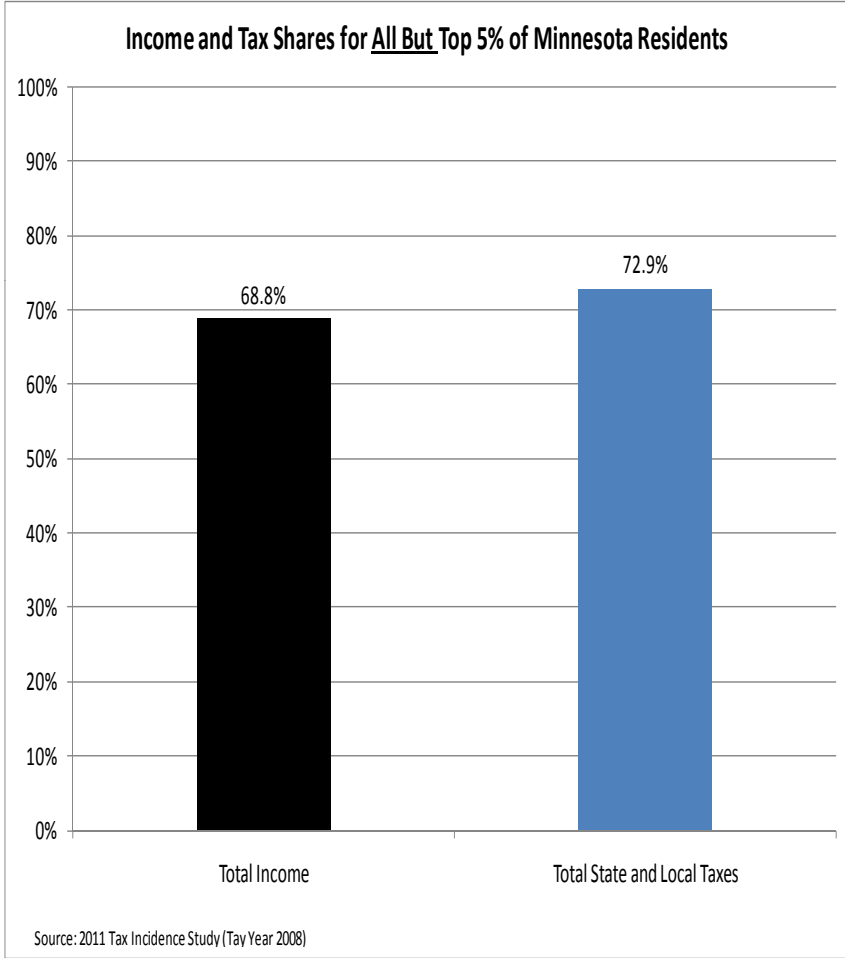
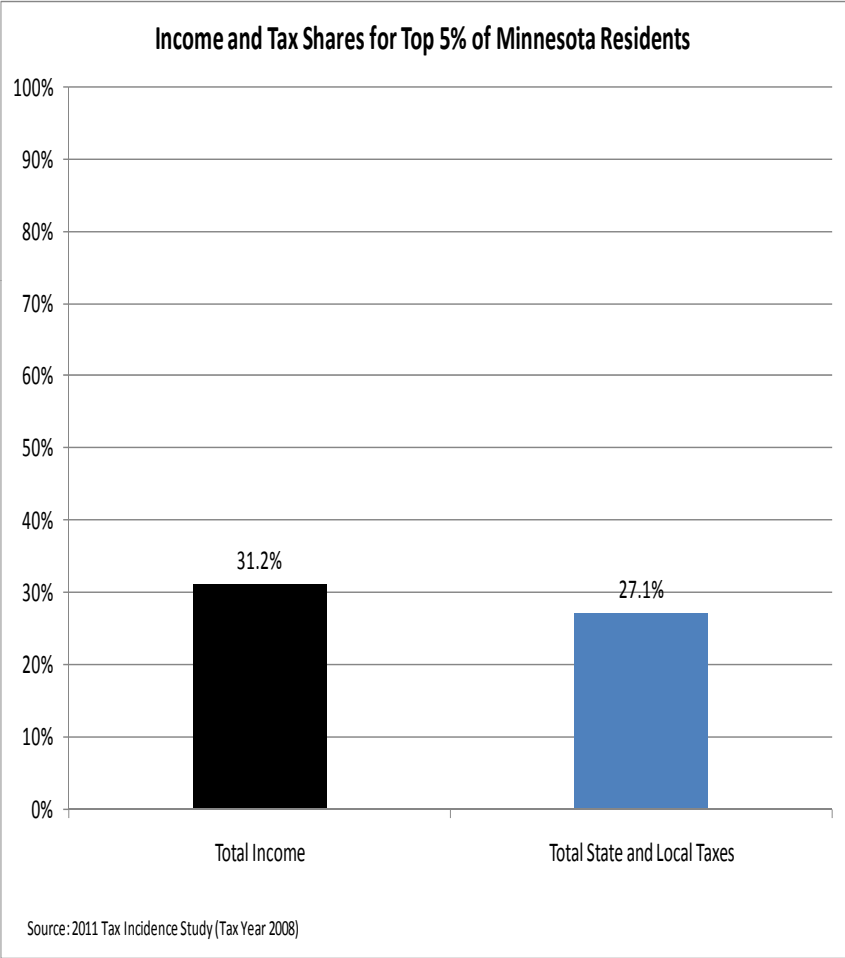
Commissioner Myron Frans
Minnesota Department of Revenue
June 9, 2011

Tax Incidence Progression Over time (Updated to May 2011 Governor's framework)

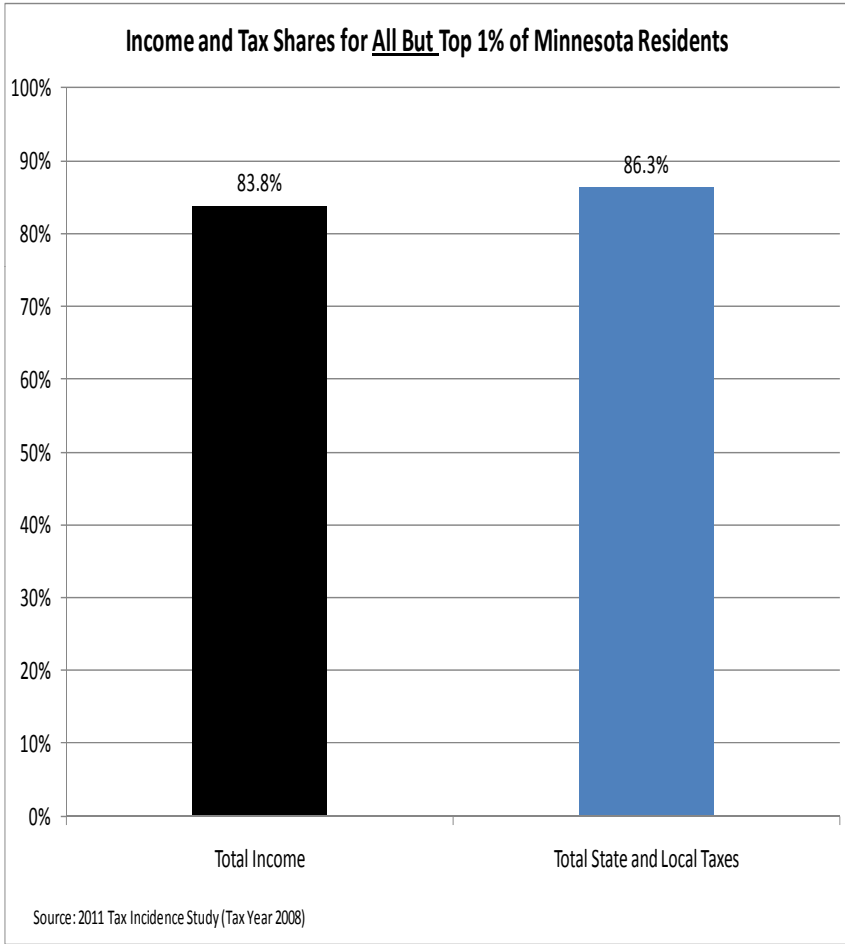
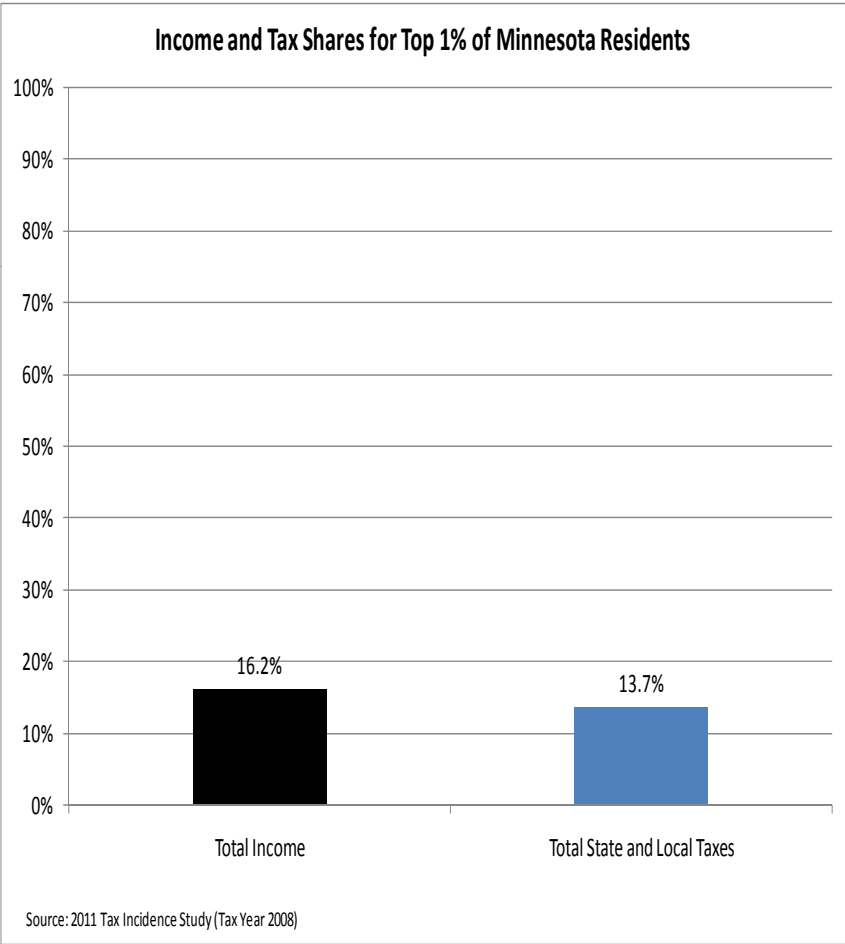


Minnesota Department of Revenue
Tax Research, June 8, 2011

Income and Tax Shares for Top 5%/ Bottom 95% of Minnesotans



Income and Tax Shares for Top 1%/ Bottom 99% of Minnesotans

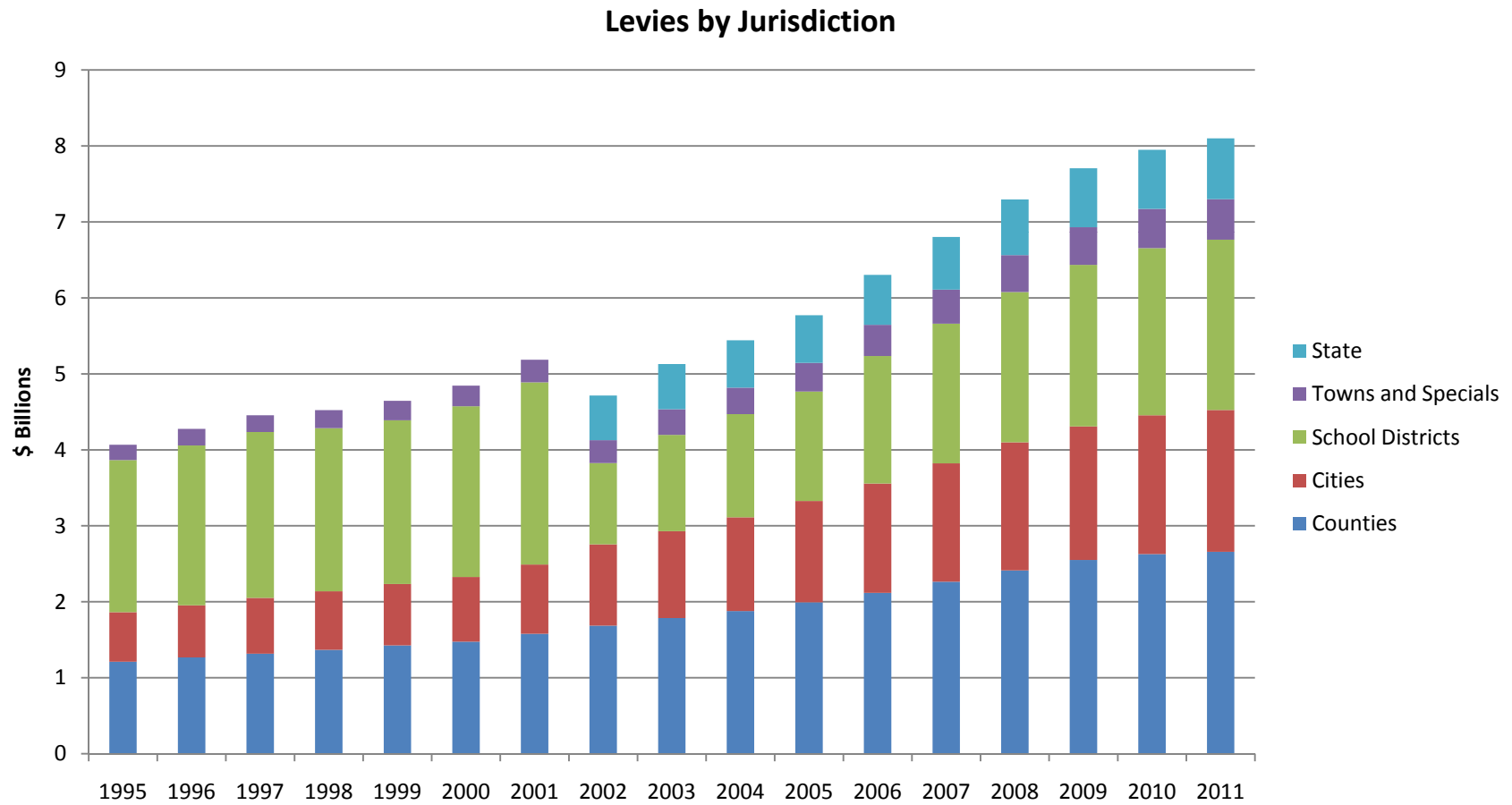


Property Tax Increases

(Baseline 2012 to Conference Committee Report 2012)

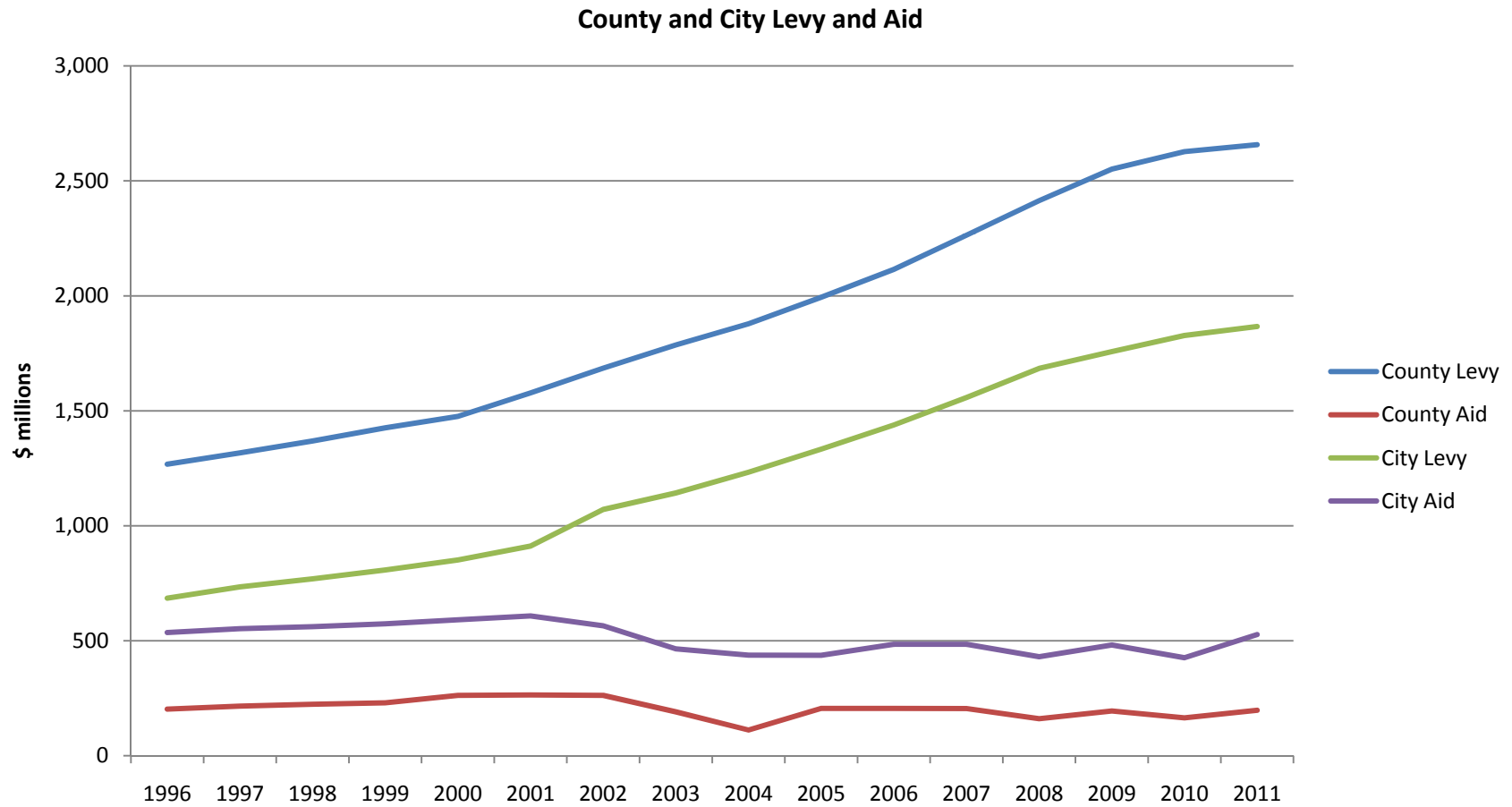
	% Change Residential Homestead	% Change Commercial/ Industrial	% Change All Property
Greater Minnesota	6.1%	5.9%	6.2%
Minneapolis	7.8%	4.8%	7.2%
St. Paul	10.5%	6.0%	9.4%
Suburban	3.7%	1.0%	2.8%
All Metro (Central Cities plus Suburban)	4.6%	2.0%	4.0%
Statewide	5.1%	3.0%	4.8%

Recent Property Tax History



Minnesota Department of Revenue
Property Tax Research, 2011

Recent Property Tax History, cont'd



Minnesota Department of Revenue
Property Tax Research, 2011